



ANNUAL REPORT
2016



Contents

- 3 Letter from Dean Golden
- 3 Letter from Bevan Baker
- 4 Mission Statement
- 5 Community Advisory Board
- 6 Executive Committee
- 7 Affiliated Faculty Investigators
- 9 Institute Programs and Cross-Cutting Themes
- 10 *County Health Rankings & Roadmaps*
- 11 Evaluation Research
- 12 Health Policy
- 13 Mobilizing Action Toward Community Health
- 14 Service Learning
 - 14 Wisconsin Population Health Service Fellowship
- 16 Community Engagement
 - 16 Partnerships
 - 18 Healthy Wisconsin Leadership Institute
- 20 Evidence-Based Practice
 - 20 Evidence-Based Health Policy Project
 - 20 What Works for Health
- 21 Conferences, Seminars, Publications, Programs
 - 21 Seminars
 - 21 Capitol Briefings by the Evidence-Based Health Policy Project
 - 22 Publications
 - 23 Reports
 - 23 Selected Abstracts and Presentations
- 25 UW Population Health Institute Organizational Chart
- 26 Institute Staff in 2016
- 27 Budget



Dr. Robert N. Golden, MD

*Dean
School of Medicine & Public Health
Vice Chancellor for Medical Affairs*

The UW Population Health Institute's annual report once again documents the impressive

activities and significant accomplishments of the Institute's faculty, staff, and students. The Institute's evaluation research and health policy programs continue to expand and improve the evidence-base for practice. Sharing this knowledge with policy makers elevates the role of evidence in decision-making for policy and practice. The *County Health Rankings & Roadmaps*, with support from the Robert Wood Johnson Foundation, has evolved into a national program that serves as a gold standard for the use of data for catalyzing action across the nation and provides a roadmap for driving the improvement of health and health equity in communities throughout our nation.

The Institute conducts its work with a superlative group of faculty and staff scientists, researchers, and analysts, with each of its programs led by national experts. Perhaps most notable in reviewing the progress and accomplishments of the Institute during 2016 is the change in leadership of the Institute. In October, Karen Timberlake, who had served as director of Institute since 2011, moved on to new opportunities in the private sector. Karen brought unique experiences, deep and broad expertise, and a passion for advancing health to her position. She led many highly productive statewide collaborative efforts, seamlessly orchestrating partnerships with leaders across a wide spectrum of organizations. Among her many accomplishments, she guided the development of a new component of the Institute—the Mobilizing Action Toward Community Health (MATCH) unit. MATCH will continue its work in supporting community-driven population health improvement through the Healthy Wisconsin Leadership Institute and the Population Health Service Fellowship, and will expand the focus on working with Wisconsin communities to improve health and health equity through training, technical assistance, and partnerships.

Dr. Remington became the Interim Director of the Institute in October, and is working with a distinguished search committee to help identify the next director of the Institute. As expected, the Institute's national reputation has attracted a strong group of applicants, and the future looks extremely bright as we prepare to pass the proverbial baton to the next leader.



Bevan K. Baker, FACHE

*Commissioner of Health
Milwaukee Health Department*

I have the pleasure of serving as a member of the Population Health Institute's Advisory Board. In this capacity, I've seen the growth in

depth and breadth of the Institute's activities to work toward the goal of translating research for policy and practice. The application of research discoveries from academic centers to community priorities is critically needed to help improve the everyday lives of people in our communities.

As the Commissioner of Health for the City of Milwaukee Health Department for the past 12 years, I work every day to establish strong partnerships to promote the health and well-being of Milwaukee residents. Too many of our residents suffer from preventable diseases, and we need to promote what works to improve mental health, reduce substance use disorders and prescription drug misuse, reduce chronic disease rates, improve childhood immunizations, reduce preterm birth and infant mortality rates, create safe neighborhoods, and to address the social determinants of health.

The City recently released our 2015-2016 Community Health Assessment (CHA)—a result of a yearlong effort to gather, analyze and summarize data on the health status and conditions that impact the health of city of Milwaukee residents. This report leverages the model of population health that was developed by Dr. Remington and colleagues in the Institute, and is now used as a model for measuring and monitoring the health of every county across the nation.

The CHA is not only compelling in and of itself, but also serves as the foundation for our citywide Community Health Improvement Plan (CHIP), which is currently in the process of being finalized. In both reports, we emphasize that public health is a shared responsibility. Improving health and advancing health equity in our state takes time and commitment, and will only happen when a broad range of institutions across a range of sectors work together. To effectively address public health issues, we rely on and value the partnerships with the UW Population Health Institute, and look forward to bringing a healthy future to residents of our state, and of our state's largest city.

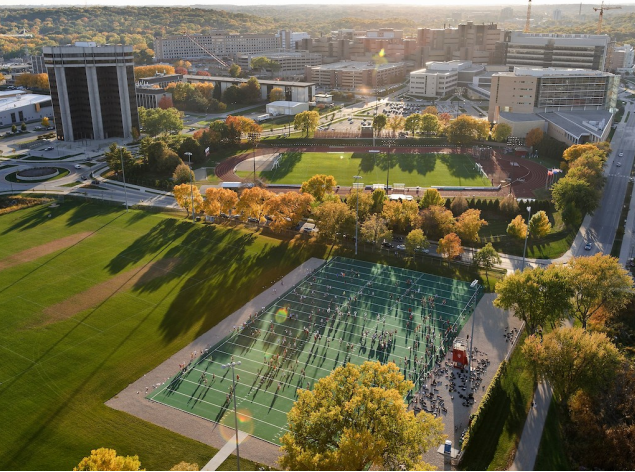


Photo by Jeff Miller/UW-Madison

Our Mission: *Translating Research for Policy and Practice*

The UW Population Health Institute advances health and well-being for all by developing and evaluating interventions and promoting evidence-based approaches to policy and practice at the local, state, and national levels. The Institute works across the full spectrum of factors that contribute to health.

A focal point for health and health care dialogue within the University of Wisconsin-Madison, and a convener of stakeholders, the Institute promotes an exchange of expertise between and among those within the university and those in the policy and practice arena.

Our Goals:

- ◆ *Address* a broad range of real-world, health-related problems of topical interest and stakeholder relevance;
- ◆ *Promote* partnerships between researchers and users of research, encouraging collaboration between the academic community and those engaged in practice and policy within both the public and private sectors;
- ◆ *Evaluate* programs and policies to support quality improvement, promote accountability, and seek evidence-based solutions;
- ◆ *Build* the knowledge base of effective programs and policies;
- ◆ *Provide* learning opportunities for practitioners and students; and
- ◆ *Contribute* to policy decisions and program implementations that improve health and well-being for all.



Photo by Ninjas for Health

Our Values:

Impact: Have an impact on problems that matter

Action: Support action based on research and data

Influence: Leverage the assets of the University in service to the greater community

Collaboration: Work in diverse partnerships, respecting and drawing upon the strengths and assets that partners bring

Creativity: Seek out innovative and pragmatic solutions

Curiosity: Foster knowledge exchange across sectors

Excellence: Uphold a commitment to excellence and continuous quality improvement

Equity: Advance initiatives that ensure all people have the opportunity to achieve their full health potential

Community Advisory Board

The Institute is guided by a Community Advisory Board, with members from the health care, public health, business, and education sectors, as well as leaders from Wisconsin's legislature.

The Board meets two to three times per year to guide the work of the Institute and provide feedback on its programs and publications.

Advisory Board Members in 2016

Rick Abrams

CEO
Wisconsin Medical Society

Bevan Baker

Milwaukee Health Commissioner
City of Milwaukee Health Department

Tim Bartholow

VP & Chief Medical Officer
WEA Trust

Steve Brenton

President
Wisconsin Hospital Association

Cheryl DeMars

President and CEO
The Alliance

Kurt Eggebrecht

Health Officer
Appleton City Health Department

Curt Gielow

Campus Chief Executive
School of Pharmacy
Concordia University-Ann Arbor

Senator Julie Lassa

Wisconsin State Senate

Kathy Loppnow

Health Occupation Education Director
Wisconsin Technical College System

Demond Means

Superintendent
Mequon-Thiensville School District

Senator Terry Moulton

Wisconsin State Senate

Gregory Nycz

Director
Family Health Center of Marshfield Inc.

Christopher Queram

President/CEO
WI Collaborative for Healthcare Quality

Ayaz Samadani

Family Physician
Dean/St. Mary Regional Clinic

Annette Severson

Associate Chief Nurse
Nursing Education and Research
Zablocki VA Medical Center

Greg Simmons

President and CEO
MetaStar, Inc.

Tim Size

Executive Director
Rural Wisconsin Health Cooperative

Jeff Stone

Administrator
Water, Telecommunications, and Consumer
Affairs Division
Wisconsin Public Service Commission

Dick Tillmar

Owner
Tillmar Connect, LLC

Executive Committee

The Population Health Institute supports the mission of our integrated School of Medicine and Public Health to translate public health and health policy research for practice. We consider our work an embodiment of the Wisconsin Idea, working with the public and private sectors – government, business, advocates, and community members -- at the state and local level -- toward a healthier Wisconsin.

The Executive Committee provides guidance to the Director on the performance of the Institute, reviewing goals and objectives and evaluating accomplishments through this annual report.

Executive Committee Members in 2016

Alexandra K. Adams, MD, PhD

Associate Professor, Department of Family
Medicine & Community Health
UW-Madison

Ron Cisler, PhD, MS

Director, Center for Urban Population Health
Professor, Health Informatics & Administration
UW-Milwaukee

Tim Corden, MD

Chief Medical Officer - Bureau of Community
Health Promotion
Division of Public Health
Wisconsin Department of Health Services

F. Javier Nieto, MD, MPH, PhD

Chair, Population Health Sciences
UW-Madison

Tom Oliver, PhD, MHA

Professor, Population Health Sciences
Director, UW Master of Public Health Program
UW-Madison

Patrick Remington, MD, MPH

Associate Dean for Public Health
Professor, Population Health Sciences
UW-Madison

Gordon Ridley, MS

Adjunct Professor Emeritus, Population Health
Sciences
Consultant to Dean, School of Medicine & Public
Health
UW-Madison

Maureen A. Smith, MD, MPH, PhD

Director, Health Innovation Program
Director, Community-Academic Partnerships
Core,
Assistant Director for UW Institute for Clinical
and Translational Research
Associate Director for Population Sciences
UW-Madison

Barbara (Bobbi) Wolfe, PhD

Richard A Easterlin Professor, Department of
Economics, La Follette School of Public Affairs
and Department of Population Health Sciences
UW-Madison

Susan Webb Yackee, PhD

Associate Professor, Political Science and Public
Affairs
Director, La Follette School of Public Affairs
UW-Madison

Susan Zahner, DrPH, MPH

Vilas Distinguished Achievement Professor &
Associate Dean for Academic Affairs, School of
Nursing
UW-Madison

Affiliated Faculty Investigators

These faculty members are affiliated with the UW Population Health Institute through a joint appointment with their home departments. Faculty are designated as "affiliated" when their work extends the teaching and research of our Institute.



Alex Adams, MD, PhD

Professor
Department of Family Medicine &
Community Health

Affiliation: Obesity Prevention Initiative -
Evaluation Research Group



Richard Brown, MD, MPH

Director
Wisconsin Initiative to Promote
Healthy Lifestyles

Affiliation: High School SBIRT Project -
Evaluation Research Group



Marguerite Burns, PhD

Assistant Professor
Population Health Sciences

Affiliation: Health Policy Group



Aaron Carrel, MD

Medical Director
UW Health Pediatric Fitness Clinic

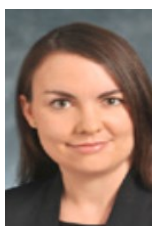
Affiliation: Obesity Prevention Initiative -
Evaluation Research Group



Brian Christens, PhD

*Civil Society & Community Research
Faculty Director*
Center for Community & Nonprofit
Studies

Affiliation: Obesity Prevention Initiative –
Evaluation Research Group



Laura Dague, PhD

Assistant Professor
Texas A&M University

Affiliation: Health Policy Group



Deb Ehrenthal, MD, MPH, FACP

*Lifecourse Initiative for Healthy Families
Endowed Chair*
UW School of Medicine and Public Health

Affiliations: Lifecourse Initiative for
Healthy Families, Obesity Prevention
Initiative - Evaluation Research Group;
Preceptor, Population Health Service
Fellowship - MATCH Group



David Kindig, MD, PhD

Emeritus Professor
Population Health Sciences
Emeritus Vice-Chancellor
Health Sciences

Affiliation: Principal Investigator, Making
Wisconsin the Healthiest State Project –
MATCH Group; County Health Rankings
& Roadmaps Group



James LaGro, Jr., PhD

Professor
UW Urban and Regional Planning

Affiliation: Obesity Prevention Initiative,
Evaluation Research Group



Kristen Malecki, PhD, MPH

Assistant Professor
Population Health Sciences

Affiliation: Obesity Prevention Initiative,
Breast Cancer & The Environment
Research Program – Evaluation
Research Group



D. Paul Moberg, PhD

Senior Faculty Advisor
UWPHI Evaluation Research Group

Director for Evaluation
Institute for Clinical & Translational
Research

Affiliation: Evaluation Research Group

Affiliated Faculty Investigators (cont'd)



Tom Oliver, PhD, MHA

Professor
Population Health Sciences

Affiliation: *Principal Investigator, Population Health Service Fellowship – MATCH Group*



Amy Trentham-Dietz, PhD

Professor
Population Health Sciences
Program Leader
Cancer Control Program,
Carbone Cancer Center

Affiliation: *Breast Cancer & the Environment Research Program – Evaluation Research Group*



Patrick Remington, MD, MPH

Associate Dean for Public Health
UW School of Medicine and Public Health

Affiliation: *County Health Rankings & Roadmaps Group; Obesity Prevention Initiative - Evaluation Research Group; Principal Investigator, Population Health Service Fellowship – MATCH Group*



Jim Vergeront, MD

Program Director
Wisconsin AIDS/HIV Program
Wisconsin Department of
Health
Services

Affiliation: *Preceptor & Faculty Member, Population Health Service Fellowship – MATCH Group*



Joel Rogers, PhD, JD

Sewell-Bascom Professor of Law, Political
Science, Public Affairs, and Sociology

Director
Center on Wisconsin Strategy

Affiliation: *Health Policy for Wisconsin Communities – Evaluation Research Group, MATCH Group*



David Weimer, PhD

Edwin E Witte Professor of
Political Economy
UW La Follette School of Public Affairs

Affiliation: *Recovery High Schools Evaluation - Evaluation Research Group; Health Policy Group*



Brendan Saloner, PhD

Associate Professor
Johns Hopkins University

Affiliation: *Health Policy Group*



Bobbi Wolfe, PhD

Richard E Easterlin Professor of
Economics, Population Health
Sciences, and Public Affairs

Affiliation: *Health Policy Group*



Geof Swain, MD, MPH

Medical Director and Chief Medical Officer
Milwaukee Health Department

Affiliation: *Preceptor & Faculty Member, Population Health Service Fellowship – MATCH Group*

Institute Programs and Cross-Cutting Themes

The Institute is led by leaders of national stature in applied public health and health policy research. Our progress during 2016 could not have been achieved without the ongoing contributions from members of our Community Advisory Board and support from the University of Wisconsin School of Medicine and Public Health and the Wisconsin Partnership Program.

The Programs of the Institute

County Health Rankings & Roadmaps (a collaboration with the Robert Wood Johnson Foundation): Analyzes and disseminates trends in population health; supports communities across the nation that are engaged in health improvement with data, evidence, tools, and guidance; identifies communities who are at the forefront of population health improvement; and networks communities and organizations leading population health efforts.

Evaluation Research: Conducts evaluation of a diverse range of public health and human service programming, including substance abuse prevention and treatment, maternal and child health, school health promotion, behavioral health in criminal justice populations, treatment courts, mental health, and chronic disease.

Health Policy: Engages in research, consulting, and analysis in partnership with Wisconsin's leading public and private sector policymakers in health and health care, focusing especially on cost, financing, coverage, access, and health system performance, along with disparities and the social determinants of health.

Mobilizing Action Toward Community Health (MATCH): Monitors and assesses population health, engages diverse stakeholders in community health improvement, and connects the Institute to the public health and health care sectors in the state through seminars, conferences, training programs and collaborative efforts.

Cross-Cutting Themes

Service Learning: Serves as a population health 'laboratory' for professional development, where graduate students and fellows apply their skills to real-world issues and settings.

Community Engagement: Fosters strong partnerships between the University of Wisconsin and population health practitioners and policymakers.

Evidence-Based Practice: Produces, evaluates, and disseminates research to support "what works" in policy and practice.



Photos (left, right) by Ninjas for Health

County Health Rankings & Roadmaps



Julie Willems Van Dijk

*Program Director and
Associate Scientist*

Description: The *CHR&R* group works in collaboration with the Robert Wood Johnson Foundation (RWJF) to provide data, evidence, guidance, and

human support to communities throughout the nation who are committed to improving their health. The group's work is grounded in the following principles:

- Harnessing the **collective power** of leaders from multiple sectors and of community members, particularly those most affected by poor health;
- Putting health within everyone's reach by **addressing gaps** that disproportionately and negatively affect certain populations;
- **Using data**, including the *Rankings* and additional local data, to identify needs and opportunity gaps, set priorities and track progress;
- **Using evidence** where it exists to guide the work and where evidence is lacking **creating new and innovative solutions** and evaluating these new efforts along the way;
- Focusing action on all of the **factors that influence health**, especially those that contribute the most, such as social and economic factors;
- Committing to **sustainable solutions** that focus on **systems, policies and environmental changes**;
- Recognizing and building on existing and emerging **assets to chart the community's unique course** towards a shared vision of health;
- **Securing and making the most of resources**, including fully leveraging human capital and the consideration of health impacts into public and private decision making;
- **Measuring and sharing progress** and results widely and using these results to continuously improve progress towards health; and
- Contributing to a national movement to create a Culture of Health by **sharing stories and lessons learned** and seeking out opportunities to learn from others.

Our ultimate goal is to improve health outcomes and increase health equity in local communities across the nation.

Primary Partners:

Diverse organizations and individuals at the national, state, regional, and local levels from non-profit, academic, governmental, business, community development, philanthropic, health care, and public health sectors working to improve the health of local communities across the nation.

Major Program Components:

- *County Health Rankings*
- *What Works for Health*
- *Roadmaps to Health Action Center and Coaching*
- *RWJF Culture of Health Prize*
- National Partnerships & Networking

Highlights in 2016:

- Released the 2016 *County Health Rankings*, accompanied by a Key Findings Report that highlighted differences in premature death for rural, urban, and suburban communities, gaps in health factors, and introduced new measures of residential segregation, insufficient sleep, and drug overdose deaths.
- Released *What Works? Strategies to Improve Rural Health*
- Announced seven new *RWJF Culture of Health Prize* recipients, selected from a pool of applications from 188 communities across the nation, and co-hosted (with RWJF) a celebration and learning event.
- Co-hosted (with Active Living by Design) a learning event for the twenty communities who received *Roadmaps to Health Action Awards* in 2015.
- Launched a pilot initiative to expand networks and dissemination of *CHR&R* assets in the ten states that rank lowest in *America's Health Rankings*.
- Presented at the national or regional meetings of *CHR&R*'s four national partners—Local Initiatives Support Corporation, National Association of Counties, NeighborWorks, and United Way Worldwide.
- Honored our founding Co-Director, Dr. Bridget Catlin, who retired in August, 2016.

Evaluation Research



Sara Lindberg
*Program Director &
Associate Scientist*

Description: The Evaluation Research Group conducts assessments of state and local programs in public health and human services. The group also maintains directly funded

evaluation research projects, using experimental and quasi-experimental designs to conduct rigorous evaluation of innovative programs.

Primary Partners: Community, tribal, county, and state governmental agencies; collaboration with national researchers, practitioners, and faculty and staff within the University of Wisconsin.

The Program Evaluation group was involved in more than 30 actively-funded projects during 2016. Evaluations include a diverse range of program concerns: substance abuse prevention and treatment, maternal and child health, school health promotion, criminal justice populations, treatment courts, mental health, and chronic disease.

Major Evaluation Projects:

- Several projects that address the opioid epidemic in Wisconsin, including:
 - ◊ Partnerships for Success, which evaluates implementation of evidence-based approaches to substance use and abuse prevention in Wisconsin communities.
 - ◊ Medicated Assisted Treatment, which evaluates the effectiveness of various medical and behavioral treatments for opioid addiction; and
 - ◊ Prescription Drug/Opioid Overdose-Related Deaths Prevention Project, which focuses on the reduction of deaths and adverse events by training first responders and other members of the community on prevention and the implementation of secondary prevention strategies, including the purchase and distribution of naloxone to first responders.

- National Children's Center for Rural and Agricultural Health and Safety: A national program addressing the prevention of childhood agricultural injuries funded by the Center for Disease Control and Prevention.
- Family Foundations Home Visiting Programs to improve maternal and child health in tribal communities funded by the WI Department of Children and Families via Great Lakes Inter-Tribal Council.
- Criminal Justice: Several projects focus on development and evaluation of drug treatment courts and diversion programs with WI counties and tribes.
- Obesity Prevention: several projects, including a statewide effort to build collective impact and community capacity to change policies, systems, and environments contributing to Obesity.
- A variety of programs based both in the community and in schools that address identifying and providing services to youth and young adults with, or who are at risk for, serious mental health problems.
- Health Disparities: Several projects focus on Native American health, in partnership with the Great Lakes Inter-Tribal Council, and on African American and Latino health, in partnership with the Wisconsin Division of Public Health, the Department of Public Instruction and the Wisconsin Partnership Program.

Examples of the Services Provided:

- Designing and implementing comprehensive program evaluations.
- Developing a wide range of evaluation designs and needs assessments.
- Developing data collection methods, such as survey instruments and interview protocols.
- Measuring progress toward program objectives and national performance standards.
- Conducting qualitative research, including content analysis, intensive interviews, focus groups, and site visits.
- Statistical analysis of data from surveys, administrative data, and program-specific data sets.

Health Policy



Donna Friedsam
*Program Director &
Distinguished Researcher*

Description: The Institute's Health Policy programs connect the University of Wisconsin School of Medicine and Public Health to Wisconsin's leading public and private sector policy-

makers in the health care and public health arenas with particular focus on cost, financing, access, coverage, policy reforms and on health system performance. The group conducts primary research, evaluates policies and programs, and communicates new and existing evidence and analyses through issue briefs, consultancies, briefings, forums, and symposia.

Primary Stakeholders: Lawmakers, state officials, legislative and administrative agency staff, and health care provider, purchaser, payer, business and consumer groups.

Highlights from 2016

Health Financing and System Reform

- Conducted first year of a four-year evaluation of Wisconsin's 2014 Medicaid waiver, its impact on health care utilization, costs, and enrollment by parents, caretaker adults, and childless adults.
- Completed final report of evaluation of Medicaid's Medical Homes for high risk pregnant women in Southeastern Wisconsin, assessing the changes made by clinics and HMOs, their impact on care delivery and birth outcomes.
- Supported planning and evaluation of Wisconsin's State Innovation Model (SIM) design phase, in partnership with the Wisconsin Department of Health Services, including consultation and final report on data elements, program models, and measurement.
- Served on the Wisconsin Medicaid agency's Strategic Workgroup to plan for the implementation of Wisconsin's entitlement reforms and the Affordable Care Act.

- Produced chartpack monitoring ACA enrollment and changes in BadgerCare enrollment, with information about insurance premiums and plans.
- Conducted extensive media interviews regarding ACA open enrollment and potential changes under new federal leadership, including Wisconsin Public Television, Wisconsin Public Radio, Milwaukee Public Radio, *Milwaukee Journal Sentinel*, *Wisconsin State Journal*, *USA Today Magazine*, *Christian Science Monitor*, *Modern Healthcare*, *WCLO Radio Janesville*, *WisPolitics*, *Wisconsin Health News*, *West Bend Daily News*.

Evidence-Based Health Policy Project

Delivered Capitol briefings focusing on:

- State role in food systems and nutrition policy
- Lyme, West Nile, and Zika
- Opioid Addiction Treatment and Recovery Programs

Teaching Applied Health Policy

- Contributed to medical students' integrated cases on health care costs and insurance and on the policy process.
- Mentored two La Follette and three MPH graduate students as project assistants, and an economics doctoral student.
- Delivered lectures in UW courses in the nursing, physician assistant, medicine, and public health programs, focusing on Wisconsin health systems and financing, Medicaid, and the federal Affordable Care Act.

Policy in the Community

- Served as a contracted advisor to UW Extension on health care access, coverage, and ACA implementation.
- Continued oversight of Covering Wisconsin, including \$1.5 million annual budget, 13 employed staff, subcontracts in agencies serving 23 counties, and PI-ship of seven separate funding sources.
- Attained contract with Wisconsin Health Information Organization (WHIO) to sustain health insurance literacy programming – a partnership between Covering Wisconsin and Wisconsin Health Literacy.

Mobilizing Action Toward Community Health (MATCH)



Paula Tran Inzeo
Program Director &
Associate Researcher

Description: The MATCH group develops and deploys programs and resources as well as engages in collaborative

partnerships that support strategic community-driven efforts to make it easier for people to be healthy in their homes, schools, workplaces, and neighborhoods.

Our group engages with communities in the following activities:

- Monitoring health and health disparities;
- Moving from data to action by bringing people together to look at the many factors that influence health, select strategies that work, and make changes that will have a lasting impact;
- Disseminating information to motivate action toward community health improvement;
- Delivering training programs that build the capacity of and provide service to communities, coalitions, and public health leaders; and
- Producing seminars, workshops, and lifelong learning opportunities for community leaders and public health Practitioners.

Our ultimate goal is to ensure that communities have the skills and tools to improve the health of their population. To respond to the emerging needs of communities, we encourage ongoing dialogue with community members via our websites, webinars, email, phone, or in-person discussions or presentations.

Primary Partners

Diverse organizations and individuals at the national, state, and local levels from non-profit, academic, governmental, business, and local public health sectors working to improve the health of the state of Wisconsin.

Major Projects

Making Wisconsin the Healthiest State

- Measure, assess and report on Wisconsin's health and health disparities.
- Support local community health improvement via tools such as the Wisconsin version of What Works for Health and www.improvingWIhealth.org, which houses information on shared priorities from community health assessments and improvement plans from local health departments and hospitals.

Healthy Wisconsin Leadership Institute

- Community Teams Program
- COACH (Collaborating, Organizing and Advocating for Community Health) Program

Population Health Service Fellowship Program

First Monday Seminar Series

Community Health Assessment and Planning



Service Learning

Description: The Institute’s programs provide students and fellows the opportunity to “learn while doing.” This focus on service learning adds to coursework that students take. Students working with the Institute are enrolled in the Population Health MS/PhD program, Master of Public Health (MPH) program, the La Follette School of Public Affairs, the Department of Economics, and elsewhere. The Institute serves as a population health “laboratory” for learning, where students apply their skills to real-world issues and settings, and have an opportunity to publish results as issue briefs or articles.

Primary Partners: State and local health and health care leaders who provide service learning opportunities for students working in the Institute, or for fellows in the Wisconsin Population Health Service Fellowship.

Wisconsin Population Health Service Fellowship

<http://www.wiphfellowship.org>

The Wisconsin Population Health Service Fellowship recruits, deploys, and cultivates excellent early-career public health professionals to work for two years in public health and community-based organizations throughout Wisconsin. The program receives core funding from the Wisconsin Partnership Program at the UW School of Medicine and Public Health. The Fellowship combines service – by tackling some of the state’s most pressing public health challenges and attracting resources to community and public health – with workforce development, by developing population health skills and experience in future public health leaders. In 2014, Preventive Medicine Residents were integrated into the Fellowship learning community.



Photo by Tim Fitch Photography

Wisconsin Population Health Service Fellowship (cont'd)

<http://www.wiphfellowship.org>

2016 – 2018 Wisconsin Population Health Service Fellows and Preventive Medicine Residents

Stevie Burrows

Public Health Madison Dane County

Janine Foggia

Ascension Health and Marathon County Health Department

Britt Nigon

Wisconsin Division of Public Health Chronic Disease Prevention Program

Diego Tamez

Preventive Medicine Resident

Janice Valenzuela

Division of Public Health's AIDS/HIV Section of the Bureau of Communicable Diseases & Emergency Response and the Wisconsin Center for Public Health Education and Training (WICPHET) at the UW School of Medicine and Public Health

Fiona Weeks

Milwaukee Health Department in the Division of Family and Community Health and the Institute for Child and Family Well-being

Jasmine Zapata

Preventive Medicine Resident

2015 – 2017 Wisconsin Population Health Service Fellows and Preventive Medicine Residents

Salma Abadin

Milwaukee Health Department and IMPACT Planning Council

Kallista Bley

Wood County Health Department and Forward Community Investments

Ashley Kraybill

Wisconsin Division of Public Health, Office of Policy and Practice Alignment Policy Section

Maria Mora Pinzon

Preventive Medicine Resident

Elizabeth Stein

Preventive Medicine Resident

Leslie Tou

Wisconsin Division of Public Health, Bureau of Community Health Promotion Family Section, and the Lifecourse Initiative for Healthy Families, UW School of Medicine and Public Health

Nick Zupan

Wisconsin Division of Public Health, Western Regional Office and Eau Claire City-County Health Department

2014 – 2016 Wisconsin Population Health Service Fellows and Preventive Medicine Residents

Jameela Ali

Wisconsin Center for Public Health Education and Training

Karina Atwell

Preventive Medicine Resident

Stephanie Kroll

Wisconsin Division of Public Health and Public Health Madison Dane County

Bailey Murph

United Way of Greater Milwaukee

Robert Redwood

Preventive Medicine Resident

Evelyn Sharkey

Milwaukee Health Department, Division of Disease Control and Environmental Health and the Medical College of Wisconsin, Community Health Improvement for Milwaukee's Children

Hester Simons

Wisconsin Division of Public Health, Office of Minority Health and Centro Hispano

Community Engagement

The UW's "Wisconsin Idea" envisions close working relationships throughout the State of Wisconsin, such that "the beneficent influence of the University reaches every family in the State." Institute staff members regularly engage with colleagues and partners in programs, applied research, program evaluation, committees, consulting, proposal development, and other activities. These partnerships, some funded, some in-kind, and some simply collegial, include entities in the public and private sectors as well as in other departments and centers throughout the University.

The list provides a selected view of the myriad organizations with which Institute staff collaborated and/or consulted in 2016.



Public/Governmental Agencies and Private and Voluntary Sector Agencies

100 Million Healthier Lives
 Active Living By Design
 Adams-Friendship Area School District
 AIDS Resource Center of Wisconsin
 American Bar Association
 Ashland County
 Bolton Refuge House, Inc.
 BUILD Health Challenge
 Build Healthy Places Network
 Building a Safer Evansville (BASE)
 Bureau of Justice Assistance
 Center for Creative Leadership
 Centers for Disease Control and Prevention
 Central Wisconsin Health Partnership
 Children's Hospital of Wisconsin

Columbia County Health & Human Services
 Community Groundworks
 Dane County Criminal Justice Council – Racial Disparities Sub Committee
 Dane County District Attorney's Office
 Division of Public Health (State of Wisconsin Department of Health Services)
 East Central Wisconsin Regional Planning Commission
 Eau Claire City-County Health Department
 Eau Claire YMCA
 Family Support Center
 Federal Reserve Banks of Chicago & Cleveland
 Feeding America Eastern Wisconsin

Feeding Wisconsin
 Fond du Lac County
 Fort Healthcare
 Forward Community Investments
 Georgia Health Policy Center
 Great Lakes Inter-Tribal Council
 Green Tier Legacy Communities
 HEAL Coalition
 Health Care Education and Training
 Health Resources and Services Administration
 Health Services & Administration
 Office of Rural Health
 HealthNet of Rock County, Inc.
 Ho-Chunk Nation Health Department and Breastfeeding Coalition
 Horizon High School

Public/Governmental Agencies and Private and Voluntary Sector Agencies (cont'd)

Iowa County Health Department	Richland County Health and Human Services	University of Wisconsin-Eau Claire
Iowa County Social Services	Richland Medical Center	University of Wisconsin-Milwaukee Helen Bader School of Social Welfare
Jackson County	Richland Schools	UW Extension
KWG Counseling	Rock County Public Health Department	Winnebago County Health Department
La Crosse County Health Department	Rural Wisconsin Health Cooperative	Wisconsin Alliance for Women's Health
Lac Courte Oreilles Band of Lake Superior Chippewa Indians	Rusk County WIC	Wisconsin Association of Treatment Court Professionals
Lac du Flambeau Band of Lake Superior Chippewa Indians	Sauk Prairie Memorial Hospital	Wisconsin Center for Public Health Education and Training
Local Initiatives Support Corporation (LISC)	Scenic Bluffs Community Health Centers	Wisconsin Collaborative for Healthcare Quality
Madison Region Economic Partnership	School District of Ashland	Wisconsin Counties Association
Marathon County Health Department	School District of Beloit	Wisconsin Department of Agriculture, Trade, and Consumer Protection
Marshfield Clinic Research Foundation	Scott Consulting Partners	Wisconsin Department of Children and Families
Medical College of Wisconsin	Sixteenth Street Community Health Centers	Wisconsin Department of Health Services
Milwaukee Health Department	South Central Wisconsin Area Health Education Center	Wisconsin Department of Justice Treatment Alternatives and Diversion Program
Ministry Health Care	Southwest Alliance for Tobacco Prevention	Wisconsin Department of Public Instruction
National Association of Counties	Southwest Community Action Program	Wisconsin Inter-Tribal Criminal Justice Council
National Association of Drug Court Professionals	Southwest Wisconsin Workforce Development Board	Wisconsin Local Food Network
National Cancer Institute	Southwest Community Action Program	Wisconsin Minority Health Advisory Group
National Institute for Alcohol Abuse and Alcoholism	SSM Health	Wisconsin Office of the State Public Defender
National Institute of Environmental Health Sciences	State of Wisconsin WIC	Wisconsin Public Health Association
National League of Cities	Statewide Criminal Justice Coordinating Council	Wisconsin Public Health Research Network
National Legal Aid & Defender Association (NLADA)	Statewide Tribal Criminal Justice Coordinating Council	Women & Children's Horizons
National Network for Public Health Institutes	Substance Abuse and Mental Health Services Administration (SAMHSA)	Wood County Health Department
National Racial Justice Improvement Project (RJIP)	Symons Recreation Complex	Youth2Youth 4 Change
NeighborWorks	The Richland Hospital, Inc.	
Organic Valley	The Robert Wood Johnson Foundation	
Outagamie County Public Health Division	Trinity Lutheran Church	
Public Health Madison Dane County	United States Department of Agriculture	
ReThink Health	United States Department of Education	
re:THINK	United Way Worldwide	
Richland County AmeriCorps Farm to School	UniverCity Alliance	

Healthy Wisconsin Leadership Institute

www.hwli.org

The Healthy Wisconsin Leadership Institute (HWLI) is a capacity building and training resource that provides public and community health education and leadership development throughout Wisconsin. HWLI is supported by the Wisconsin Partnership Program at the University of Wisconsin School of Medicine and Public Health. HWLI meets its goals through delivering the following two programs: Community Teams Program and COACH (Collaborating, Organizing and Advocating for Community Health) Program.

The yearlong, regional Community Teams Program facilitates sustainable community partnerships through the development of collaborative leadership practices and public health skills among teams working on health improvement. The Eleventh cohort (2016 – 2017) includes six teams primarily located in southwest Wisconsin:



2016 - 2017 Community Teams

Health Equity Alliance of Rock County (HEAR)—ensuring that Rock County reaches its full health potential through a commitment to health equity and community collaboration.

Richland FIT—creating a healthier Richland County for all residents by offering healthy choices, revising environments and sustaining fitness through policy change.

Happy Healthy Neighbors - Cashton—creating a culture of health and mental well-being in the Cashton community through promotion and initiatives for healthy lifestyle choices for all residents.

Southwest Food Security Partnership (Iowa, Lafayette, Grant, Green, and Richland Counties)—identifying and understanding the root causes of food insecurity and engaging coalition partners in practical interventions to address food insecurity in the region.

Safe Spaces of the Chippewa Valley—improving the safety, visibility, health, and well-being of LGBTQ+ people of all ages in the Chippewa Valley.

Wisconsin Breastfeeding Coalition (statewide)—improving the health of Wisconsin by working collaboratively to protect, promote, and support breastfeeding.

2015 - 2016 Community Teams

Wellness for Life—Empowering Youth Through Health Education (Ashland County)—working with youth and school district partners to incorporate comprehensive health education in K-12 curriculum.

Eau Claire Healthy Communities—Healthy Relationship Promotion Action Team—committing time, efforts, and resources to eliminate incidents of domestic violence and sexual assault.

Wellness Coalition of Taylor County—initiating, supporting, and promoting a healthy lifestyle to improve nutrition and increase physical activity for individuals, families, and communities.

Healthier Together—Pierce & St. Croix Counties—creating and maintaining healthy communities and providing a more strategic framework for local health improvement activities.

Thrive Barron County—addressing multiple health priorities, working to engage community members and organizations to focus resources and develop and strengthen partnerships to establish sustainable, safe and healthy communities.

Healthy Wisconsin Leadership Institute (cont'd)

For teams who have already participated in the Community Teams Program, the COACH Program offers three years of additional support to strengthen regional and statewide skills for implementing policy, systems, and environmental changes to improve health in Wisconsin. The second COACH cohort includes three teams:

2015 - 2018 Coach Teams

East Central Health in Planning Team (Calumet, Fond du Lac, Green Lake, Marquette, Menominee, Outagamie, Shawano, Waupaca, Waushara, and Winnebago Counties)—incorporating health into regional planning processes.

Wisconsin Food Systems Alliance (statewide)—aligning state and local initiatives to accelerate the healthy food systems movement throughout Wisconsin.

Wisconsin Minority Health Leadership Team (statewide)—advocating for the elimination of health disparities and giving a voice to health issues affecting racial and ethnic minority populations in Wisconsin.

The first COACH cohort includes five teams:

2014 - 2017 Coach Teams

Working for Whitewater's Wellness (W3)—addressing obesity through increasing physical activity, healthful eating, social connectedness, and positive outlook.

Fort Healthcare Healthy Communities Coalition (comprised of six local coalitions in Jefferson County)—promoting healthful living through environmental changes that increase community access to physical activity and availability and consumption of drinking water.

LIFE (Lifestyle Initiative for Fitness Empowerment) Foundation (Cross Plains, WI)—improving nutrition and increasing physical activity in a local safe environment to ultimately lower obesity-related disease risk.

Wisconsin Active Communities Alliance (WACA) (statewide)—increasing physical activity in communities across Wisconsin by making it easier and more inviting for people to move actively to, from, and at their destinations.

Healthy People Project of Washington County—improving nutrition by increasing awareness and access to healthier food choices and increasing opportunities for and promoting physical activity of residents.

Building Statewide Alignment for Community Support

In response to local capacity-building needs and in order to increase efficiency among organizations working with communities, HWLI works with several partners to help align and augment efforts to support community-led health improvement initiatives. Examples of this work include: co-hosting monthly coalition networking calls centered around cross-cutting capacity building skills; partnering with UW-Extension to pilot a three-day training to build local community coaching capacity; and collaborating with partners (including within the Population Health Institute) to plan the *Making Wisconsin the Healthiest State Summit* (formerly the *Wisconsin Prevention Conference*), which will have a strong community-capacity building component.



Photo by Ninjas for Health

Evidence-Based Practice

Evidence-Based Health Policy Project (EBHPP)

www.evidencebasedhealthpolicy.org

Sam Austin, Managing Director

The EBHPP, a partnership with the La Follette School of Public Affairs and the Wisconsin Legislative Council, connects lawmakers and researchers, along with public and private sector decision leaders, to advance Wisconsin's health.

- Provides policy makers, in both the public and private sectors, with timely, nonpartisan, high-quality information for evidence-based decision making.
- Increases involvement of University of Wisconsin research and teaching activities in topical issues of state public policy.
- Draws on the leadership and talent of academic, government, and industry experts.
- Promotes the translation of research into practice and of practice into research.
- Designated as a core community engagement component of the University of Wisconsin School of Medicine and Public Health Institute for Clinical and Translational Research - Community Academic Partnership (ICTR-CAP).

Supported in part by the Wisconsin Partnership Program, UW School of Medicine and Public Health; the UW Chancellor's Office; and the UW Institute for Clinical & Translational Research.



Photo by Bryce Richter/UW-Madison

What Works For Health

www.whatworksforhealth.wisc.edu (Wisconsin)

www.countyhealthrankings.org/roadmaps/what-works-for-health (National)

This online database provides review and assessment of available research to rate the effectiveness of a broad variety of strategies that can affect health through changes to:

- Health behaviors;
- Clinical care;
- Social and economic factors; and
- The physical environment.

The underlying research is based on a model of population health that emphasizes the many factors that can make communities healthier places to live, learn, work, and play.

These tools systematically assess, summarize, and rate the evidence for policies and programs that can affect these factors. The goal: to provide public health professionals and community leaders with the information they need to make evidence-informed decisions about improving health in their communities and, where available, with tools to get started.

Analysts begin with a broad orientation search to define each policy or program and identify appropriate search terms. Targeted literature searches are conducted, focusing first on systematic reviews and peer reviewed articles.

Searches focus next on selected sources of grey literature and the findings of relevant, reputable organizations that assess policy and program effectiveness. Analysts prepare high level summaries of each source's key findings and quality; summaries are reviewed independently by another team member. A final evidence rating is assigned based on an assessment of the available information.

This database continues to be a key resource in Wisconsin for many of the applicants to the Wisconsin Partnership Programs' Community Grant Programs as well as others across the state and nation seeking to identify effective health improvement policies and programs.

Supported by the Wisconsin Partnership Program, UW School of Medicine and Public Health and the Robert Wood Johnson Foundation.

Conferences, Seminars, Publications, Programs

Institute-Sponsored Seminars

Investing in Healthy Communities: Ideas to Action for Healthy People, Places, and Planet

Jointly sponsored by UW Population Health Institute, Federal Reserve Bank of Chicago, Incourage, Robert Wood Johnson Foundation, Adams County, Aspirus, Avivar Capital, CAP Services, Forward Community Investments, Federal Home Loan Bank of Chicago, Impact Seven, Michael Best Strategies, US Department of Agriculture Rural Development, and Wood County Health Department.

Wisconsin Rapids, December 7, 2016

Keynote speakers included:

David Erickson, Federal Reserve Bank of San Francisco
Farshad Maltes, Wisconsin Housing and Economic Development Authority
Doug Nelson, retired, Anne E. Casey Foundation
Kelly Ryan, Incourage
Katherine Tyler Scott, KI ThoughtBridge
Katie Wehr, Robert Wood Johnson Foundation

Capitol Briefings by the Evidence-Based Health Policy Project

Lyme, West Nile, and Now Zika

March 3, 2016

Moderator: Representative David Craig, WI Assembly District 83

Speakers:

Jorge Osorio, Associate Professor & Researcher, Dept. of Pathobiological Sciences, UW-Madison

Susan Paskewitz, Professor & Researcher, Department of Entomology, UW-Madison

Evidence-Based Treatment (and Recovery) Programs for Opioid Addiction

April 28, 2016

Moderator: Representative John Nygren, WI Assembly District 89

Speakers:

Holly Audley, Evidence-Based Program Manager, Reentry Unit, WI Dept. of Corrections

Anthony Ernst, PhD, Substance Abuse Services Section Chief, WI Dept. of Health Services

Cody Fearing, Co-chair, Live Free Collegiate Recovery Program, UW-Madison

Ryan Holzmacher, MD, Division of Adult Institutions, Medical Director, WI Dept. of Corrections

Allen Nyberg, Co-Founder, Young People in Recovery and Mentor at Connections Counseling and Aaron's House

Hank Weiss, PhD, MPH, Dept. of Population Health Sciences, UWSMPH

Aleksandra Zgierska, MD, President, Wisconsin Society of Addiction Medicine

Farmers, Eaters, and Legislators: The State Role in Food Systems and Nutrition Policy

December 14th, 2016

Moderator: Representative Joan Ballweg, WI Assembly District 41

Speakers:

Dr. Jed Colquhoun, UW-Extension, Agricultural and Natural Resources Extension

Vanessa Herald, UW-Madison Center for Integrated Agricultural Systems

Ellen Ritter and Amy Mihm, UW Health Nutrition Services

Publications

- Adams A, Christens B, Meinen A, Korth A, Remington P, Lindberg S, Schoeller D. The Obesity Prevention Initiative: A statewide initiative to improve child health in Wisconsin. *Wisconsin Medical Journal*, 2016; 115: 220-223.
- Bowser J, Martinez-Donate A, Carrel A, Allen DB, Moberg, DP. Disparities in Fitness and Physical Activity Among Children. *Wisconsin Medical Journal*, 2016; 115: 245-250.
- Eggers S, Remington PL, Ryan K, Nieto FJ, Peppard P, Malecki K. Obesity Prevalence and Health Consequences: Findings From the Survey of the Health of Wisconsin, 2008-2013. *Wisconsin Medical Journal*, 2016; 115: 238-244.
- Friedsam D. [Future of ACA Uncertain, But Coverage Intact for 2017](#). *WisContext*. November 28, 2016
- Gennuso, K.P., Jovaag, A., Catlin, B.B., Rodock, M., & Park, H. Assessment of Factors Contributing to Health Outcomes in the Eight States of the Mississippi Delta Region. *Prev Chronic Dis*, 2016, 13:E33. Doi 10.5888/pcd13.150440.
- Gregor L, Remington P, Lindberg S, Ehrenthal D. Prevalence of pre-pregnancy obesity, 2011-2014. *Wisconsin Medical Journal*, 2016; 115: 228-232.
- Hilgendorf A, Stedman J, Inzeo PT, McCall A, Burrows J, Krueger S, Christens B, Pollard E, Meinen A, Korth A, Wolf L, Adams A. Lessons from a Pilot Community-Driven Approach for Obesity Prevention. *Wisconsin Medical Journal*, 2016; 115: 275-279
- Hood, C.M., Gennuso, K.P., Swain, G.R., & Catlin, B.B. County Health Rankings: Relationships between Determinant Factors and Health Outcomes. *Am J Prev Med*, 2016, 50(2):129-135. Doi: 10.1016/j.amepre.2015.08.024.
- Laudet AB, Harris K, Kimball T, Winters KC, Moberg DP. In college and in recovery: Reasons for joining a Collegiate Recovery Program. *Journal of American College Health*. 2016;64(3):238-246.
- Lindberg S, Anderson C, Pillai P, Tandias A, Arndt B, Hanrahan L. Prevalence and predictors of unhealthy weight gain in pregnancy. *Wisconsin Medical Journal*, 2016; 115: 233-237. PMID: In progress.
- Lindberg SM, DeBoth A, Anderson CK. Effect of a best practice alert on gestational weight gain, health services, and pregnancy outcomes. *Maternal and Child Health Journal*, 2016; 20: 2169–2178.
- Martinez-Donate AP, Valdivia-Espino J, Meinen A, Escaron AL, Roubal A, Nieto FJ, Malecki K. Neighborhood Disparities in the Restaurant Food Environment. *Wisconsin Medical Journal*, 2016; 115: 251-258.
- Meinen A, Hilgendorf A, Korth AL, Christens BD, Breuer C, Joyner H, Polzin M, Adams A, Wolfe D, Braun A, Hoiting J, Paulson J, Cullen B, Stader K. The Wisconsin Early Childhood Obesity Prevention Initiative: An Example of Statewide Collective Impact. *Wisconsin Medical Journal*, 2016; 115: 269-274.
- Priess-Groban HA, Lindberg SM. *Encyclopedia of Adolescence*. Levesque R, editor. New York, NY: Springer; 2016. Gender intensification.
- Ryan K, Pillai P, Remington P, Malecki K, Lindberg S. Development of an obesity prevention dashboard for Wisconsin. *Wisconsin Medical Journal*, 2016; 115: 224-227.
- Sheehan SE, Coburn JA, Singh H, Vanness DJ, Sittig DF, Moberg DP, Safdar N, Lee KS, Brunner MC, Reducing Unnecessary Shoulder MRI Examinations Within a Capitated Health Care System: A Potential Role for Shoulder Ultrasound, *Journal of the American College of Radiology*, 2016; 13(7): 780-787.

Reports

County Health Rankings Key Findings 2016

Prepared by Catlin B, Jovaag A, Givens M, & Willems Van Dijk J. March 2016. Available at <http://www.countyhealthrankings.org/reports/key-findings-2016>

Evaluation of Medicaid Medical Homes for Pregnant Women in Southeast Wisconsin, Final Report.

Prepared by Friedsam D, Leininger L., & Voskuil KR. March 2016.

Jackson County Community Health Survey: Summary of Results

Prepared by Linnan S, Lecoanet R. March 2016.

What Works? Strategies to Improve Rural Health

Prepared by Bergum A, Catlin B, Willems Van Dijk J, & Timberlake K. July 2015. Available at <http://www.countyhealthrankings.org/node/35670>

Strategic Prevention Framework Partnerships for Success II: Final Evaluation Report

Prepared by Linnan S, Tuholski B, Moberg DP. September 2016.

Wisconsin Department of Health Services, Division of Care and Treatment Services and Division of Public Health. Wisconsin Epidemiological Profile on Alcohol and Other Drugs, 2016 (P-45718-6).

Prepared by the Division of Care and Treatment Services, Division of Public Health, and the University of Wisconsin Population Health Institute. November 2016.

Chartpack: Affordable Care Act & Medicaid Reform in Wisconsin. Enrollment and Coverage Trends, November 2016; Trends in insurance coverage, pre- and post-ACA, Premiums and Plans, 2017

Prepared by Friedsam, D. 2016.

Health of Wisconsin Report Card - 2016

Prepared by Hatchell K, Handrick L, Pollock EA & Timberlake K. 2016.

Selected Abstracts & Presentations

County Health Rankings & Roadmaps: An Introduction

Kitty Jerome & Ericka Burroughs-Girardi
NeighborWorks Training Institute
Atlanta, GA
February 29, 2016

Population Health: Making it Real for Nurse Executives

Julie Willems Van Dijk & Karen Timberlake
Wisconsin Organization of Nurse Executives
Elkhart Lake, WI
April 15, 2016

Florida Health Gaps Report: What's Driving Health Differences Across the State

Marjory Givens & Ericka Burroughs-Girardi
Florida Blue Foundation
Orlando, FL
April 20, 2016

County Health Rankings & Roadmaps: New Approaches to Population Health

Kate Konkle
North Dakota Public Health Association
Bismarck, ND
May 2, 2016

Mind the Gaps!

Jan O'Neill & Marjory Givens
Wisconsin Public Health Association/Wisconsin Association of Local Health Departments & Boards
Appleton, WI
May 26, 2016

State Public Defender "Reporting, Analysis, & Mining Project (RAMP)"

Kit R. Van Stelle & Katherine Dellenback (WI State Public Defender's Office)
Smart Defense Inter-Site Summit
University of the District of Columbia David A. Clarke School of Law
Washington DC.
May 2016

Selected Abstracts & Presentations (cont'd)

County Health Rankings & Roadmaps: Tools and Resources for Action

Mary Bennett & Astra Ihuekumere
State Offices of Rural Health
Oakland, CA
July 12, 2016

Health Equity in RWJF Culture of Health Prize Communities

Carrie Carroll
National Association of County & City Health Officials
Phoenix, AZ
July 19, 2016

Evidence in Action: How to Choose Effective Strategies

Alison Bergum
National Association of Local Boards of Health
St. Louis, MO
August 11, 2016

Efforts to Develop Sub-County Measures of Health for the Nation

Amanda Jovaag
Community Indicators Conference
Washington D.C.
September 26, 2016

Data System Enhancement: A Template for Organizational Change

Janae Goodrich (with Katherine Dellenbach and Chandru Solraj of the WI State Public Defender's Office)
Bureau of Justice Assistance Smart Suite Summit
Washington, D.C.
September 2016

UW Medical Technology and Big Data Career Panel for UW-Madison undergraduate students

Kit R. Van Stelle
September 2016

Development of a Multi-Setting, Multi-Level Health Intervention Scoring Measure

Catherine Breuer, Lindsay Weymouth (along with Amy Hilgendorf and Chris Spar)
American Evaluation Association
Atlanta, GA
October 2016

Applying the "Wisconsin Idea" to the Prevention of Childhood Obesity

Schoeller DA, Christens B, Meinen A, Korth A, Remington P, Lindberg S, Adams AK.
The Obesity Society, New Orleans, LA
November 2016

Affordable Care Act, Medicaid, & Health Reform: What's Next at the Federal Level and In Wisconsin?

Donna Friedsam
Beloit Rotary Club
November 29, 2016.

Growing Local Coaching Capacity Through Community Leadership Development

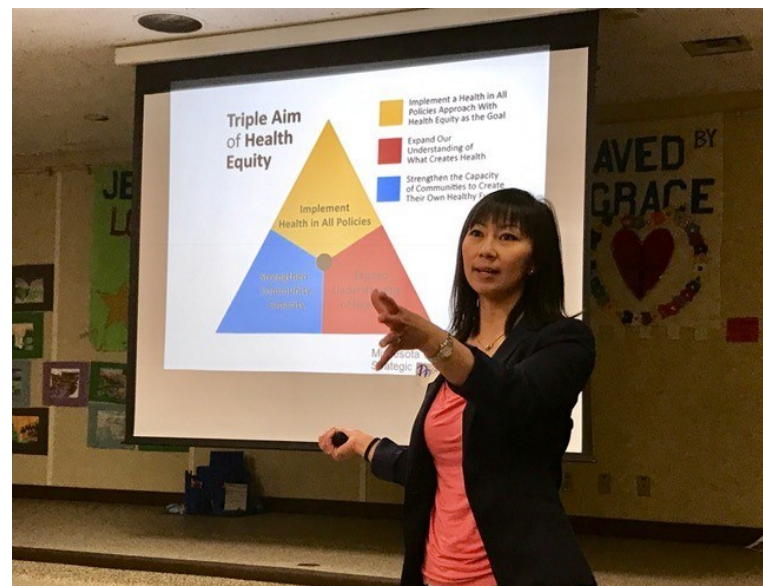
Lesley Wolf, Paula Tran Inzeo
International Leadership Association
2016

Health Equity, Intersectionality, and Social Determinants: Putting It All Together to Make Change in Community

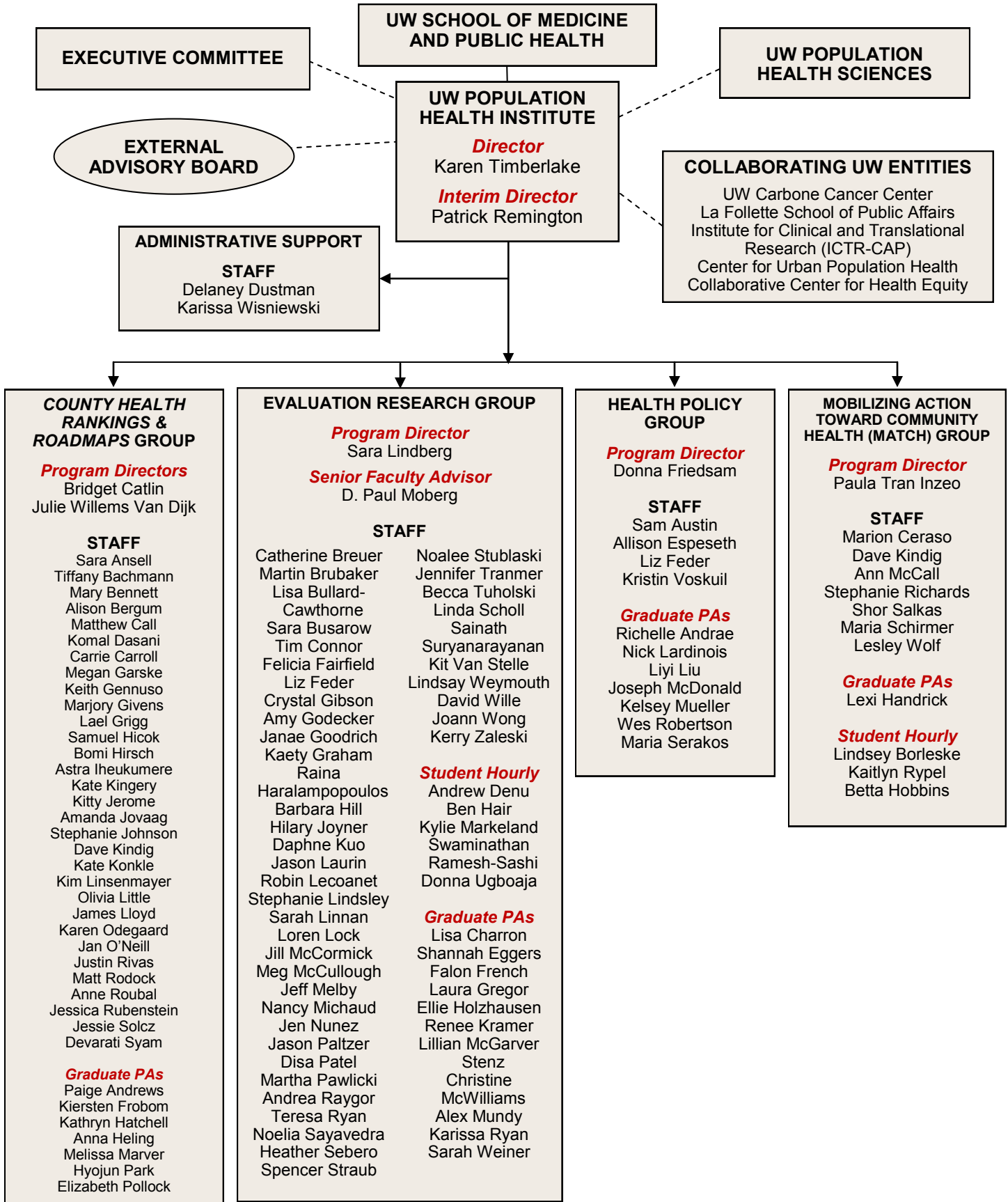
Lesley Wolf, Shor Salkas
Wisconsin Public Health Nursing Conference
2016

From Roots to Results: Community Health Capacity Building in Wisconsin

Lesley Wolf, Stephanie Richards
Health and Hunger Summit
2016



University of Wisconsin School of Medicine and Public Health UW Population Health Institute



Institute Staff in 2016

Sara Ansell, Associate Researcher
Sam Austin, Health Policy Analyst
Tiffany Bachmann, University Services Associate II
Mary Bennett, Associate Researcher
Alison Bergum, Associate Researcher
Catherine Breuer, Assistant Researcher
Martín Brubaker, Associate Research Specialist
Lisa Bullard-Cawthorne, PDO Program Coordinator
Sara Busarow, Associate Researcher
Matthew Call, Program Manager
Carrie Carroll, Researcher
Bridget Catlin, MATCH/County Health Rankings & Roadmaps Program Director
Marion Ceraso, HWLI & Fellowship Director
Tim Connor, Researcher
Komal Dasani, University Services Associate II
Delaney Dustman, Administrative Coordinator
Allison Espeseth, Senior Outreach Specialist
Felicia Fairfield, Outreach Specialist
Liz Feder, Associate Researcher
Donna Friedsam, Health Policy Program Director
Megan Garske, Associate Media Specialist
Keith Gennuso, Assistant Scientist
Crystal Gibson, Epidemiologist
Marjory Givens, Associate Scientist
Amy Godecker, Associate Scientist
Janae Goodrich, Senior Research Specialist
Kaety Graham, Associate Research Specialist
Lael Grigg, Assistant Researcher
Raina Haralampopoulos, Outreach Specialist
Samuel Hicok, University Services Associate II
Barbara Hill, Senior Research Specialist
Bomi Hirsch, Assistant Researcher
Astra Iheukumere, Associate Researcher
Kitty Jerome, Researcher
Stephanie Johnson, Associate Researcher
Amanda Jovaag, Associate Researcher
Hilary Joyner, Assistant Researcher
Dave Kindig, Professor Emeritus
Kate Kingery, Researcher
Kate Konkle, Associate Researcher
Daphne Kuo, Assistant Scientist
Jason Laurin, Outreach Specialist
Robin Lecoanet, Researcher
Sara Lindberg, Evaluation Research Program Director
Stephanie Lindsley, Assistant Researcher
Sarah Linnan, Assistant Researcher
Kim Linsenmayer, Research Program Manager
Olivia Little, Associate Researcher
James Lloyd, Program Technology Specialist
Loren Lock, Associate Research Specialist
Ann McCall, Outreach Specialist
Jill McCormick, Senior Outreach Specialist
Meg McCullough, Outreach Specialist
Jeff Melby, Outreach Specialist
Nancy Michaud, Senior Outreach Specialist
D. Paul Moberg, Research Professor, Faculty Advisor, & Senior Scientist
Jen Nuñez, Assistant Researcher
Karen Odegaard, Associate Researcher
Jan O'Neill, Associate Researcher
Jason Paltzer, Assistant Scientist

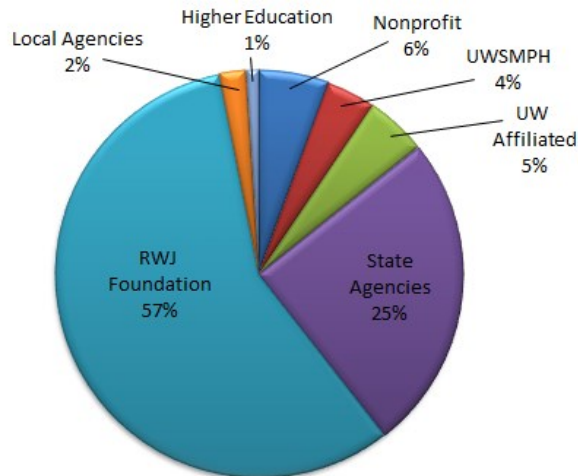
Disa Patel, Outreach Specialist
Martha Pawlicki, University Services Program Associate
Andrea Raygor, Assistant Researcher
Patrick Remington, Interim Director
Stephanie Richards, Associate Outreach Specialist
Justin Rivas, Associate Researcher
Matthew Rodock, Assistant Researcher
Anne Roubal, Associate Researcher
Jessica Rubenstein, Assistant Researcher
Teresa Ryan, Senior Outreach Specialist
Shor Salkas, HWLI Community Coach
Noelia Sayavedra, Assistant Researcher
Maria Schirmer, HWLI Community Coach
Linda Scholl, Associate Researcher
Heather Sebero, Outreach Specialist
Jessie Solcz, Assistant Researcher
Spencer Straub, Senior Outreach Specialist
Noalee Stublaski, Outreach Specialist
Sainath Suryanarayanan, Assistant Scientist for the Study of Transdisciplinary Biomedical Research
Devarati Syam, Associate Researcher
Karen Timberlake, Director
Paula Tran Inzeo, Mobilizing Action Toward Community Health Program Director
Jennifer Tranmer, Communications Specialist
Becca Tuholski, Associate Research Specialist
Kit Van Stelle, Researcher
Kristin Voskuil, Associate Researcher
Lindsay Weymouth, Assistant Researcher
David Wille, Outreach Specialist
Julie Willems Van Dijk, County Health Rankings & Roadmaps Program Director
Karissa Wisniewski, Research Manager
Lesley Wolf, HWLI Outreach Program Manager
Joann Wong, Associate Outreach Specialist
Kerry Zaleski, Outreach Specialist

Institute Graduate Students in 2016

Richelle Andrae	Liyi Liu
Paige Andrews	Melissa Marver
Lisa Charron	Joseph McDonald
Shannah Eggers	Lillian McGarver
Falon French	Christine McWilliams
Kiersten Frobom	Kelsey Mueller
Laura Gregor	Alex Mundy
Lexi Handrick	Hyojun Park
Amy Hansen	Elizabeth Pollock
Kathryn Hatchell	Wes Robertson
Anna Heling	Karissa Ryan
Ellie Holzhausen	Maria Serakos
Renee Kramer	Sarah Weiner
Nick Lardinois	

Budget

The Institute's total budget for 2016 was approximately \$9.6 million. This funding comes from a diverse mix of sources, including the Robert Wood Johnson Foundation, the Wisconsin Partnership Program, Wisconsin state agencies, local and tribal agencies, federal agencies, UW School of Medicine and Public Health, and several foundation and other non-profit sources. Federal funds flow to the Institute via several of these resources. The following graph summarizes each funding source as a percent of the Institute's total budget. Representative projects in each category are listed, following the graph:



National, State, Tribal & Community Organizations

Great Lakes Inter-Tribal Council, Inc.

- Family Foundations Home Visiting Program
- Healthy Start
- Tribal Personal Responsibility Education Program

Lac Courte Oreilles Band of Lake Superior Chippewa Indians

- Mino Maajisewin Home Visiting Program

Lac du Flambeau Tribe

- Zaagiibagaa Tribal Healing to Wellness Court

Wisconsin Statewide Health Information Network

- State Health Innovation Plan

Local Agencies

Adams-Friendship School District

- Advancing Wellness and Resilience in Education
- Breaking Down Student Barriers

Ashland County Health & Human Services

- Advancing Wellness and Resilience in Education
- Ashland County Drug Treatment Court

Fond du Lac County Community Programs

- Adult Drug Treatment Court

School District of Beloit

- Safe Schools/Healthy Students

State Agencies

WI State Public Defender's Office

- Reporting, Analysis, and Mining Project Evaluation

WI Department of Health Services

- BadgerCare Waiver Evaluation
- Fit Families – Supplemental Nutrition Assistance Program Education
- Chronic Disease Program Integration and Coordinated Chronic Disease Prevention and Health Promotion
- Mental Health Program Evaluation
- Project Youth Extension Service
- State Innovation Models
- Partnership for Success
- Tobacco Prevention and Control Program
- Adolescent Health Evaluation
- Medication Assisted Treatment Prescription Drug and Opioid Addiction
- Prescription Drug Overdose Program
- Operating While Intoxicated Study

Higher Education

Vanderbilt University

- Recovery Schools as Continuing Care

Robert Wood Johnson Foundation

- *County Health Rankings & Roadmaps*
- Population Health Mean and Disparity Index

UW School of Medicine & Public Health

- UWPHI Core Funding

UW Affiliated – Foundations & Programs

UW Partnership Program

- Adams County Community Wellness Program
- Evaluation of the Lifecourse Initiative for Healthy Families
- Evidence-based Health Policy Project
- Healthy Wisconsin Leadership Institute
- Increasing Cultural Congruence among Nurses in Wisconsin
- Making Wisconsin the Healthiest State
- Wisconsin Population Health Service Fellowship Program

UW Institute for Clinical Translational Research

- Institute for Clinical Translational Research Program Evaluation

UW Population Health Institute
Department of Population Health Sciences
University of Wisconsin School of Medicine & Public Health
575 WARF Building
610 Walnut Street, Madison, WI 53726

 (608) 263-6294

 (608) 262-6404

 UWPHI@med.wisc.edu

 Uwphi.pophealth.wisc.edu

 @JWiscPHI



University of Wisconsin
Population Health Institute
SCHOOL OF MEDICINE AND PUBLIC HEALTH