



Translating Research for Policy and Practice

Annual Report 2015



Contents

- 2 Letter from Patrick Remington
- 2 Introduction from Director Karen Timberlake
- 3 Mission Statement
- 4 Community Advisory Board
- 4 Affiliated Faculty Investigators
- 6 Institute Programs and Cross-Cutting Themes
- 7 Health Policy
- 8 Evaluation Research
- 9 Mobilizing Action Toward Community Health (MATCH)
- 10 Wisconsin Population Health Service Fellowship
- 11 Healthy Wisconsin Leadership Institute
- 12 Community Engagement
- 13 Evidence-Based Practice
- 14 Executive Committee
- 15 UW Population Health Institute Organizational Chart
- 16 Institute Staff in 2015
- 17 Conferences, Seminars, Publications, Programs
- 18 Capitol Briefings by the Evidence-Based Health Policy Project
- 19 Publications
- 19 Reports
- 20 Fact Sheets
- 21 Selected Abstracts and Presentations
- 22 Budget



Patrick Remington, MD, MPH

*Population Health Institute Director: 2002-2009
Professor and Associate Dean for Public Health*

In 2005, the University of Wisconsin Medical School became the nation's first "School of Medicine *and Public Health*," signifying its commitment to broaden its focus from health care, to the other factors

that affect health, including social and economic factors, health behaviors, and the environment.

With little notice and no fanfare, the Population Health Institute also changed its name that year. First established in 2002, the Institute had been named the "Wisconsin Public Health and Health Policy Institute" reflecting its goal to blend health care policy with traditional public health approaches. In 2005, the Institute formally changed its name to the University of Wisconsin Population Health Institute. Both these changes signaled an institutional transformation and recognition of the importance of population-based approaches to improve the health of the public.

Reading the Annual Report from 2005, I am struck by the progress in only a decade. That year, the following accomplishments were noted:

- Established the **Healthy Wisconsin Leadership Institute**
- Increased the **Population Health Fellowship Program** from 2 to 5 fellows
- Released the 2005 **Wisconsin County Health Rankings**
- Published 7 Issue Briefs, addressing health outcomes, health disparities, and health promotion programs.
- Continued the "**Healthiest State**" project, funded under the Wisconsin Partnership Fund
- Conducted a two-day conference on The Transformation of Health Care and the Role of the University.
- Prepared a report and publication on the quality of diabetes care in Wisconsin's HMOs

The growth of the Institute has been remarkable since it was first established--increasing over 10-fold, from only 8 staff and a budget of about \$600,000 in 2002 to 94 staff and a budget of \$8.6 million today. Its reputation for timely, relevant analysis, evaluation, convening, and dissemination of the best health improvement practices has grown accordingly. I encourage you to read more about the remarkable breadth and depth of work by this talented team of staff, students, and faculty in this report.

Finally, I noted that four members of the current Advisory Board were present when the Institute was first established in 2002, including Greg Nycz, Chris Queram, Greg Simmons, and Tim Size. We are deeply indebted to them, and to the rest of the members of the Institute's Advisory Board, for their dedication and help in keeping the Wisconsin Idea alive and well.



Karen Timberlake, JD

*Director,
Population Health Institute*

We are pleased to bring you highlights of the work of the UW Population Health Institute for 2015. The UW Population Health Institute advances

health and well-being for all by developing and evaluating interventions, and promoting evidence-based approaches to policy and practice, at the local, state, and national levels. The Institute works across the full spectrum of factors that contribute to health. Our work grows ever more important as the shared understanding of what determines length and quality of life continues to deepen.

I spent a good part of 2015 facilitating two working groups under Wisconsin's State Innovation Models planning grant. These grants, sponsored by the federal Center for Medicare and Medicaid Innovation, seek to catalyze health care transformation and health improvement by using the levers of state governments and their partners to drive change. What struck me in this work, as we focused on common, generally manageable chronic diseases (diabetes, hypertension, and depression in working-age adults) was the growing common ground between health care providers, purchasers, and payers, and those working to improve conditions in communities. There is no question that we must rebalance our efforts to improve health all across the many drivers of health, including healthy community design, access to affordable, healthy food, and especially the social and economic determinants of education and income, among many of factors. What came through so clearly in our State Innovation Models work was that while access to high quality, affordable, equitable health care services certainly matters, we can do everything "right" in a clinical sense and still not realize healthier people. The Institute's work in forging and fostering cross-sector partnerships, and connecting those interested in health improvement from all sectors of society to the best available data and evidence, grows ever more important.

Thank you for your interest in the work of the UW Population Health Institute. We always welcome your questions and feedback on opportunities to improve health and well-being for all across Wisconsin and the nation.

Our Mission: Translating Research for Policy and Practice

The UW Population Health Institute advances health and well-being for all by developing and evaluating interventions and promoting evidence-based approaches to policy and practice at the local, state, and national levels. The Institute works across the full spectrum of factors that contribute to health.

A focal point for health and health care dialogue within the University of Wisconsin-Madison, and a convener of stakeholders, the Institute promotes an exchange of expertise between and among those within the university and those in the policy and practice arena.

Our Goals:

- ◆ *Address* a broad range of real-world, health-related problems of topical interest and stakeholder relevance;
- ◆ *Promote* partnerships between researchers and users of research, encouraging collaboration between the academic community and those engaged in practice and policy within both the public and private sectors;
- ◆ *Evaluate* programs and policies to support quality improvement, promote accountability, and seek evidence-based solutions;
- ◆ *Build* the knowledge base of effective programs and policies;
- ◆ *Provide* learning opportunities for practitioners and students; and
- ◆ *Contribute* to policy decisions and program implementations that improve health and well-being for all.



Photo: Nimjas for Health

Our Values:

Impact: Have an impact on problems that matter

Action: Support action based on research and data

Influence: Leverage the assets of the University in service to the greater community

Collaboration: Work in diverse partnerships, respecting and drawing upon the strengths and assets that partners bring

Creativity: Seek out innovative and pragmatic solutions

Curiosity: Foster knowledge exchange across sectors

Excellence: Uphold a commitment to excellence and continuous quality improvement

Equity: Advance initiatives that ensure all people have the opportunity to achieve their full health potential

Community Advisory Board

The Institute is guided by a Community Advisory Board, with members from the health care, public health, business, and education sectors, as well as leaders from Wisconsin's legislature.

The Board meets two to three times per year to guide the work of the Institute and provide feedback on its programs and publications.

Advisory Board Members in 2015

Rick Abrams

CEO
Wisconsin Medical Society

Bevan Baker

Milwaukee Health Commissioner
City of Milwaukee Health
Department

Tim Bartholow

VP & Chief Medical Officer
WEA Trust

Steve Brenton

President
Wisconsin Hospital Association

Cheryl DeMars

President and CEO
The Alliance

Kurt Eggebrecht

Health Officer
Appleton City Health Department

Curt Gielow

Campus Chief Executive
School of Pharmacy
Concordia University-Ann Arbor

Senator Julie Lassa

Wisconsin State Senate

Demond Means

Superintendent
Mequon-Thiensville School District

Senator Terry Moulton

Wisconsin State Senate

Gregory Nycz

Director
Family Health Center of
Marshfield Inc.

Representative Sandy Pasch

Wisconsin State Assembly

Christopher Queram

President/CEO
WI Collaborative for Healthcare
Quality

Ayaz Samadani

Family Physician
Dean/St. Mary Regional Clinic

Annette Severson

Associate Chief Nurse
Nursing Education and Research
Zablocki VA Medical Center

Greg Simmons

President and CEO
MetaStar, Inc.

Tim Size

Executive Director
Rural Wisconsin Health Cooperative

Jeff Stone

Administrator
Water, Telecommunications, and
Consumer Affairs Division
Wisconsin Public Service Commission

Dick Tillmar

Owner
Tillmar Connect, LLC

Affiliated Faculty Investigators


Alex Adams, MD, PhD

Director, Collaborative Center for Health Equity
Professor, Department of Family Medicine & Community Health
UW School of Medicine and Public Health


Marguerite Burns, PhD

Assistant Professor, Population Health Sciences
UW School of Medicine and Public Health


Richard Brown, MD, MPH

Professor, Dept. of Family Medicine & Community Health
Director, Wisconsin Initiative to Promote Healthy Lifestyles
UW School of Medicine and Public Health


Aaron Carrel, MD

Associate Professor, Pediatrics
UW School of Medicine and Public Health
Medical Director, UW Health Pediatric Fitness Clinic

Affiliated Faculty Investigators (con't)



Laura Dague, PhD
Assistant Professor
Texas A&M University



Thomas DeLeire, PhD
Professor
Georgetown University



Deb Ehrenthal, MD, MPH, FACP
Associate Professor, Lifecourse Initiative for Healthy Families Endowed Chair
UW School of Medicine and Public Health



David Kindig, MD, PhD
Emeritus Professor, Population Health Sciences
Emeritus Vice-Chancellor, Health Sciences
UW School of Medicine and Public Health



James A. LaGro, Jr., PhD
Professor
UW Urban & Regional Planning



Lindsey Leininger, PhD
Assistant Professor
University of Illinois-Chicago



Kristen Malecki, PhD, MPH
Assistant Professor, Population Health Sciences
UW School of Medicine and Public Health



D. Paul Moberg, PhD
Research Professor
Senior Faculty Advisor, UWPHI Evaluation Research Group
Director for Evaluation, Institute for Clinical Translational Research
UW School of Medicine and Public Health



F. Javier Nieto, MD, PhD, MPH
Chair, Population Health Sciences, Helfaer Professor of Public Health
Professor, Population Health Sciences and Family Medicine
UW School of Medicine and Public Health



Tom Oliver, PhD, MHA
Professor, Population Health Sciences
UW School of Medicine and Public Health



Patrick Remington, MD, MPH
Associate Dean for Public Health
Professor, Population Health Sciences
UW School of Medicine and Public Health



Brendan Saloner, PhD
Assistant Professor
Johns Hopkins University



Karen Timberlake, JD
Associate Professor (CHS), Population Health Sciences
Director, Population Health Institute
UW School of Medicine and Public Health



David Weimer, PhD
Edwin E. Witte Professor of Political Economy
UW La Follette School of Public Affairs



Susan Zahner, DrPH, MPH
Associate Dean for Academic Affairs
Vilas Distinguished Achievement Professor,
UW School of Nursing

Institute Programs and Cross-Cutting Themes

The Institute is led by leaders of national stature in applied public health and health policy research. Our progress during 2015 could not have been achieved without the ongoing contributions from members of our Community Advisory Board and support from the University of Wisconsin School of Medicine and Public Health and the Wisconsin Partnership Program.

The Programs of the Institute

Health Policy: Engages in research, consulting, and analysis in partnership with Wisconsin's leading public and private sector policymakers in health and health care, focusing especially on cost, financing, coverage, access, and health system performance, along with disparities and the social determinants of health.

Evaluation Research: Conducts evaluation of a diverse range of public health and human service programming, including substance abuse prevention and treatment, maternal and child health, school health promotion, criminal justice populations, treatment courts, mental health, and chronic disease.

Mobilizing Action Toward Community Health (MATCH): Monitors and assesses population health, engages communities across the nation in community health improvement, and connects the Institute to the public health and health care sectors in the state through seminars, conferences, training programs, and an active website.



Photo: Ninjas for Health

Cross-Cutting Themes

Service Learning: Serves as a population health 'laboratory' for professional development, where graduate students and fellows apply their skills to real-world issues and settings.

Community Engagement: Fosters strong partnerships between the University of Wisconsin and population health practitioners and policymakers.

Evidence-Based Practice: Produces, evaluates, and disseminates research to support "what works" in policy and practice.

Service Learning

Description: The Institute's programs provide students and fellows the opportunity to "learn while doing." This focus on service learning adds to coursework that students take. Students working with the Institute are enrolled in the Population Health MS/PhD program, Master of Public Health (MPH) program, the La Follette School of Public Affairs, the Department of Economics, and elsewhere. The Institute serves as a population health "laboratory" for learning, where students apply their skills to real-world issues and settings, and have an opportunity to publish results as issue briefs or articles.

Primary Partners: State and local health and health care leaders who provide service learning opportunities for students working in the Institute, or for fellows in the Wisconsin Population Health Service Fellowship.



Health Policy



Donna Friedsam
*Program Director
 Distinguished Researcher,
 Population Health Sciences*

Description: The Institute's health policy programs connect the University of Wisconsin School of Medicine and Public Health to Wisconsin's leading public and private sector policymakers in the health care and public health arenas with particular focus on cost, financing, access, coverage, policy reforms and on health system performance. The group conducts primary research, evaluates policies and programs, and communicates new and existing evidence and analyses through issue briefs, consultancies, briefings, forums, and symposia.

Primary Stakeholders: Lawmakers, state officials, legislative and administrative agency staff, and health care provider, purchaser, payer, business and consumer groups.

Highlights from 2015

Health Financing and System Reform

- Initiated evaluation of Wisconsin's 2014 Medicaid waiver, its impact on health care utilization, costs, and enrollment by parents, caretaker adults, and childless adults.
- Completed an evaluation of Medicaid's Medical Homes for high risk pregnant women in Southeastern Wisconsin, assessing the changes made by clinics and HMOs, their impact on care delivery and birth outcomes.
- Supported planning and evaluation of Wisconsin's State Innovation Model (SIM) design phase, in partnership with the Wisconsin Department of Health Services, including consultation on data elements, program models, and measurement.
- Served on the Wisconsin Medicaid agency's Strategic Workgroup to plan for the implementation of Wisconsin's entitlement reforms and of the Affordable Care Act.
- Produced chartpack monitoring ACA enrollment and changes in BadgerCare enrollment, along with county- and zip-code level interactive maps to depict enrollment and remaining uninsured.

- Produced forum on Medicaid payments and health care cost-shifting, attracting over 200 participants.
- Produced working paper on Wisconsin's health insurance premiums and factors contributing to insurance and provider pricing dynamics.
- Served as a contracted advisor to UW Extension on health care access, coverage, and ACA implementation.

Evidence-Based Health Policy Project

Delivered Capitol briefings focusing on

- Children's Mental Health
- Social Impact Bonds
- Ebola Vaccine
- E-Cigarettes
- Opioid Abuse and Prescribing Practices
- Health Care Hotspotting

Teaching Applied Health Policy

- Contributed to medical students' integrated cases on health care costs and insurance and on the policy process.
- Mentored two La Follette and four MPH graduate students as project assistants, and two economics doctoral students.
- Delivered a summer course on Wisconsin health systems and financing, and lectured throughout campus courses, particularly focusing on the federal Patient Protection and Affordable Care Act.

Policy in the Community

- Convened nearly 200 stakeholders for a forum, supported by the National Network of Public Health Institutes (NNPHI), toward considering the formation of a Wisconsin Community Health Fund.
- Continued technical assistance and evaluation of community program aimed toward increasing insurance coverage for behavioral health services in rural settings.
- Completed assessment of strategic initiatives among community health centers intended to strengthen their financial and clinical performance.
- Conducted assessment of potential policy and program interventions related to Wisconsin's health disparities.

Evaluation Research



Sara Lindberg
Program Director and Associate Scientist

Description: The Evaluation Research Group conducts assessments of state and local programs in public health and human services. The group also maintains directly-funded evaluation research projects, using experimental and quasi-experimental designs to conduct rigorous evaluation of innovative programs.

Primary Partners: Community, tribal, county, and state governmental agencies; collaboration with national researchers, practitioners, and faculty and staff within the University of Wisconsin.

The Program Evaluation group was involved in over 25 actively-funded projects during 2015. Evaluations include a diverse range of program concerns: substance abuse prevention and treatment, maternal and child health, school health promotion, criminal justice populations, treatment courts, mental health, and chronic disease.

Major Evaluation Projects:

- Partnership for Success, which evaluates implementation of evidence-based approaches to substance use prevention and treatment in Wisconsin communities.
- Obesity Prevention Initiative. A statewide effort to build collective impact and community capacity to change policies, systems, and environments contributing to obesity.
- National Children's Center for Rural and Agricultural Health and Safety. A national program addressing the prevention of childhood agricultural injuries funded by the Center for Disease Control and Prevention.

- Family Foundations Home Visiting Programs to improve maternal and child health.
- A variety of programs based both in the community and in schools that address identifying and providing services to youth and young adults with, or who are at risk for, serious mental health problems.
- Medicated Assisted Treatment, which evaluates the effectiveness of various medical and behavioral treatments for opioid addiction.
- Health Disparities: Several projects focus on Native American health, in partnership with the Great Lakes Inter-Tribal Council, and on African American and Latino health, in partnership with the Wisconsin Division of Public Health, the Department of Public Instruction and the Wisconsin Partnership Program.

Examples of the Services Provided:

- Designing and implementing comprehensive program evaluations.
- Developing a wide range of evaluation designs and needs assessments.
- Developing data collection methods and survey instruments.
- Measuring progress in reaching program objectives.
- Conducting qualitative research, including content analysis, intensive interviews, focus groups, and site visits.
- Statistical analysis of data from surveys, administrative data, and program-specific data sets

Mobilizing Action Toward Community Health (MATCH)



Bridget Catlin
Program Director and Senior Scientist

Description: The MATCH group focuses on helping communities identify and implement solutions that make it easier for people to be healthy in their homes, schools, workplaces, and neighborhoods.

Our group engages with communities in the following activities:

- Monitoring health and health disparities;
- Moving from data to action by bringing people together to look at the many factors that influence health, select strategies that work, and make changes that will have a lasting impact;
- Reviewing evidence on policies and programs to inform health policy, program planning, and evaluation;
- Disseminating information in user-friendly formats to motivate action toward community health improvement; and
- Producing seminars, workshops, and life-long learning opportunities for community leaders and public health practitioners.

Our ultimate goal is to empower communities to improve the health of their population. To assure we are meeting the emerging needs of communities, we encourage ongoing dialogue with community members via our websites, webinars, email, phone, or in-person discussions or presentations.

Primary Partners

Diverse organizations and individuals at the national, state, and local levels from non-profit, academic, governmental, business, and local public health sectors working to improve the health of the state of Wisconsin and across the nation.

Major Projects

- *County Health Rankings & Roadmaps*
- *RWJF Culture of Health Prize*

- Making Wisconsin the Healthiest State
- Healthy Wisconsin Leadership Institute
- Population Health Service Fellowship Program
- First Monday Seminar Series
- Community Health Assessment and Planning

County Health Rankings & Roadmaps

The *County Health Rankings & Roadmaps* program, funded by the Robert Wood Johnson Foundation (RWJF), includes the County Health Rankings, launched for the sixth time in March 2015, and the *Roadmaps to Health* project. The MATCH team also runs the *RWJF Culture of Health Prize*. Ranking the health of nearly every county in the nation, the *County Health Rankings* illustrate what we know when it comes to what's making people sick or healthy. The *Roadmaps* show what we can do to create healthier places to live, learn, work, and play.

New in 2015:

- Expansion of the coaching capacity of the *Roadmaps to Health* Action Center—11 coaches now provide coaching support to communities across the nation – four coaches are based in Madison, the other seven are located around the nation. The seven regionally-based coaches were hired through an agreement with the National Network of Public Health Institutes.
- The announcement of eight new *RWJF Culture of Health Prize* winners, selected from a pool of applications from 343 communities across the nation focusing on building a Culture of Health.
- Release of the new *County Health Rankings* State Health Gaps Reports in November.

Making Wisconsin the Healthiest State

With newly renewed funding from the Wisconsin Partnership Program, University of Wisconsin School of Medicine and Public Health, this project has two main goals:

- Measure, assess and report on Wisconsin's health and health disparities.
- Support local community health improvement via tools such as the Wisconsin version of **What Works for Health** and www.improvingWIhealth.org, which houses information on shared priorities from community health assessments and improvement plans from local health departments and hospitals.

Wisconsin Population Health Service Fellowship

<http://uwphi.pophealth.wisc.edu/programs/match/fellowship/index.htm>

The Wisconsin Population Health Service Fellowship recruits and deploys excellent early-career public health professionals to work for two years in public health and community-based organizations throughout Wisconsin. The program receives core funding from the Wisconsin Partnership Program at the UW School of Medicine and Public Health. The Fellowship combines service – by tackling some of the state’s most pressing public health challenges and attracting resources to community and public health – with workforce development, by building population health skills and experience in future public health leaders. In 2014, Preventive Medicine Residents were integrated into the Fellowship learning community.

2015 – 2017 Wisconsin Population Health Service Fellows and Preventive Medicine Residents

Salma Abadin

Milwaukee Health Department and IMPACT Planning Council

Kallista Bley

Wood County Health Department and Forward Community Investments

Ashley Kraybill

Wisconsin Division of Public Health, Office of Policy and Practice Alignment Policy Section

Maria Mora Pinzon

Preventive Medicine Resident

Elizabeth Stein

Preventive Medicine Resident

Leslie Tou

Wisconsin Division of Public Health, Bureau of Community Health Promotion Family Section, and the Lifecourse Initiative for Healthy Families, UW School of Medicine and Public Health

Nick Zupan

Wisconsin Division of Public Health, Western Regional Office and Eau Claire City-County Health Department

2014 – 2016 Wisconsin Population Health Service Fellows and Preventive Medicine Residents

Jameela Ali

Wisconsin Center for Public Health Education and Training

Karina Atwell

Preventive Medicine Resident

Stephanie Kroll

Wisconsin Division of Public Health and Public Health Madison Dane County

Bailey Murph

United Way of Greater Milwaukee

Robert Redwood

Preventive Medicine Resident

Evelyn Sharkey

Milwaukee Health Department, Division of Disease Control and Environmental Health and the Medical College of Wisconsin, Community Health Improvement for Milwaukee’s Children

Hester Simons

Wisconsin Division of Public Health, Office of Minority Health and Centro Hispano



Population Health Fellows and Preceptors, 2015

Healthy Wisconsin Leadership Institute

www.hwli.org

The Healthy Wisconsin Leadership Institute (HWLI) is a continuing education and training resource to provide public and community health education and leadership development throughout Wisconsin. HWLI is supported by the Wisconsin Partnership Program at the University of Wisconsin School of Medicine and Public Health. In addition to providing responsive technical assistance, HWLI builds regional community health improvement capacity through the Regional Community Teams program and COACH program: Collaborating, Organizing and Advocating for Community Health.

The Regional Community Teams Program is a yearlong program that facilitates sustainable community partnerships through the development of collaborative leadership and public health skills among teams working on health improvement. A cohort of five community teams graduated from the program in June 2015. The Tenth cohort (2015 – 2016) includes five teams representing community health initiatives:

2015-2016 Community Teams

Wellness for Life--Empowering Youth Through Health Education—working with youth and school district partners to incorporate comprehensive health education in K-12 curriculum.

Eau Claire Healthy Communities—Healthy Relationship Promotion Action Team—commits time, efforts and resources to achieve the goal of eliminating incidents of domestic violence and sexual assault.

Wellness Coalition of Taylor County—initiates, supports, and promotes a healthy lifestyle to improve nutrition and increase physical activity for individuals, families, and communities.

Healthier Together—Pierce & St. Croix Counties—a joint effort across two counties to create and maintain healthy communities and provide a more strategic framework for local health improvement activities.

Thrive Barron County—addressing multiple health priorities, working to engage community members and organizations to focus resources and develop and strengthen partnerships to establish sustainable, safe and healthy communities.

2014-2015 Community Teams

Lake Country Health and Wellness Alliance
East Central Health in Planning Team
Wisconsin Transgender Health Coalition

Transforming Wisconsin Food Systems Leadership Team Wisconsin Minority Health Leadership Team (WI MHLT)

For communities who have already participated in the Community Teams Program, the COACH Program offers three years of support to strengthen regional skills for implementing policy, systems and environmental changes that will improve health in Wisconsin. Teams participate in peer learning through cross-community networking visits to advance community health improvement. A cohort of three multi-county teams represents the second COACH cohort:

2015-2018 Coach Teams

East Central Health in Planning Team—incorporating health into regional planning processes.

Wisconsin Food Systems Alliance—aligning state and local initiatives to accelerate the healthy food systems movement throughout Wisconsin.

Wisconsin Minority Health Leadership Team—advocating for the elimination of health disparities and giving a voice to health issues affecting racial and ethnic minority populations in Wisconsin.

The first cohort (2014-2017) includes five teams:

2014-2017 Coach Teams

Working for Whitewater's Wellness (W3)—addressing obesity through increasing physical activity, healthful eating, social connectedness, and positive outlook.

Fort Healthcare Healthy Communities Coalition—comprised of six local coalitions promoting healthful living through environmental changes that increase community access to physical activity and availability and consumption of drinking water.

LIFE (Lifestyle Initiative for Fitness Empowerment) Foundation—improving nutrition and increasing physical activity in a local safe environment to ultimately lower obesity-related disease risk.

Wisconsin Active Communities Alliance (WACA)—increasing physical activity in communities across Wisconsin by making it easier and more inviting for people to move actively to, from, and at their destinations.

Healthy People Project of Washington County—improving nutrition by increasing awareness and access to healthier food choices and increasing opportunities for and promoting physical activity of residents.

Community Engagement

The UW's "Wisconsin Idea" envisions close working relationships throughout the State of Wisconsin, such that "the beneficent influence of the University reaches every family in the State." Institute staff members regularly engage with colleagues and partners in programs, applied research, program evaluation, committees, consulting, proposal development, and other activities. These partnerships, some funded, some in-kind, and some simply collegial, include entities in the public and private sectors as well as in other departments and centers throughout the University.

The list provides a selected view of the myriad organizations with which Institute staff collaborated and/or consulted in 2015.

Public/Governmental Agencies and Private and Voluntary Sector Agencies

Active Living By Design

American Bar Association

Ashland County

BUILD Health Challenge

Build Healthy Places Network

Bureau of Justice Assistance

Center for Creative Leadership

Centers for Disease Control and Prevention

Central Wisconsin Health Partnership

Dane County Criminal Justice Council – Racial Disparities Sub Committee

Dane County District Attorney's Office

Federal Reserve Bank of Chicago

Fond du lac County "Safe Neighborhoods Drug & Alcohol Court"

Fort Healthcare

Forward Community Investments

Great Lakes Inter-Tribal Council

Horizon High School

Lac Courte Oreilles Band of Lake Superior Chippewa Indians

Lac du Flambeau Band of Lake Superior Chippewa Indians

Local Initiatives Support Corporation (LISC)

Madison Region Economic Partnership

Marshfield Clinic Research Foundation

National Association of Counties



National Association of Drug Court Professionals
 National Institute for Alcohol Abuse and Alcoholism
 National Legal Aid & Defender Association (NLADA)
 National Network for Public Health Institutes
 National Racial Justice Improvement Project (RJIP)
 NeighborWorks
 ReThink Health
 Rural Wisconsin Health Cooperative
 Sauk Prairie Memorial Hospital
 Southwest Community Action Program
 Statewide Criminal Justice Coordinating Council
 Statewide Tribal Criminal Justice Coordinating Council
 Substance Abuse and Mental Health Services Administration
 The Robert Wood Johnson Foundation
 United States Department of Education
 United States Substance Abuse and Mental Health Services Administration (SAMHSA)
 United Way Worldwide
 University of Wisconsin-Milwaukee Helen Bader School of Social Welfare
 Wisconsin Association of Treatment Court Professionals
 Wisconsin Department of Children and Families
 Wisconsin Department of Justice Treatment Alternatives and Diversion
 Wisconsin Department of Public Instruction
 Wisconsin Office of the State Public Defender
 Wisconsin Public Health Association

Evidence-Based Practice

What Works For Health

www.whatworksforhealth.wisc.edu (Wisconsin) and www.countyhealthrankings.org/roadmaps/what-works-for-health (National)

This online database provides review and assessment of available research to rate the effectiveness of a broad variety of strategies that can affect health through changes to:

- Health behaviors
- Clinical care
- Social and economic factors, and
- The physical environment

The underlying research is based on a model of population health that emphasizes the many factors that can make communities healthier places to live, learn, work, and play.

These tools systematically assess, summarize, and rate the evidence for policies and programs that can affect these factors. The goal: to provide public health professionals and community leaders with the information they need to make evidence-informed decisions about improving health in their communities and, where available, with tools to get started.

Analysts begin with a broad orientation search to define each policy or program and identify appropriate search terms. Targeted literature searches are conducted, focusing first on systematic reviews and peer reviewed articles.

Searches focus next on selected sources of grey literature and the findings of relevant, reputable organizations that assess policy and program effectiveness. Analysts prepare high level summaries of each source's key findings and quality; summaries are reviewed independently by another team member. A final evidence rating is assigned based on an assessment of the available information.

This database continues to be a key resource in Wisconsin for many of the applicants to the Wisconsin Partnership Programs' Community-Academic Partnership grant program as well as others across the state and nation seeking to identify effective health improvement policies and programs.

Supported by the Wisconsin Partnership Program, UW School of Medicine and Public Health and the Robert Wood Johnson Foundation.

Evidence-Based Health Policy Project (EBHPP)

www.evidencebasedhealthpolicy.org

The EBHPP, a partnership with the La Follette School of Public Affairs and the Wisconsin Legislative Council, connects lawmakers and researchers, along with public and private sector decision leaders, to advance Wisconsin's health.

- Provides policy makers, in both the public and private sectors, with timely, nonpartisan, high-quality information for evidence-based decision making.
- Increases involvement of University of Wisconsin research and teaching activities in topical issues of state public policy.
- Draws on the leadership and talent of academic, government, and industry experts.
- Promotes the translation of research into practice and of practice into research.
- Designated as a core community engagement component of the University of Wisconsin School of Medicine and Public Health Institute for Clinical and Translational Research - Community Academic Partnership (ICTR-CAP).

Supported in part by the Wisconsin Partnership Program, UW School of Medicine and Public Health; the UW Chancellor's Office; and the UW Institute for Clinical & Translational Research.



Robert M. La Follette
School of Public Affairs
UNIVERSITY OF WISCONSIN-MADISON



University of Wisconsin
Population Health Institute
SCHOOL OF MEDICINE AND PUBLIC HEALTH



WISCONSIN
LEGISLATIVE COUNCIL

Executive Committee

The Population Health Institute supports the mission of our integrated School of Medicine and Public Health to translate public health and health policy research for practice. We consider our work an embodiment of the Wisconsin Idea, working with the public and private sectors – government, business, advocates, and community members -- at the state and local level -- toward a healthier Wisconsin.

The Executive Committee provides guidance to the Director on the performance of the Institute, reviewing goals and objectives and evaluating accomplishments through this annual report.

Alexandra K. Adams, MD, PhD

Associate Professor, Department of Medicine
UW School of Medicine and Public Health

Ron Cisler, PhD, MS

Director, Center for Urban Population Health
Professor, Health Informatics & Administration,
College of Health Sciences, UW-Milwaukee
Affiliate Professor, Zilber School of Public Health,
UW-Milwaukee
Affiliate Professor, Population Health Sciences,
UW School of Medicine and Public Health, UW-Madison

Tim Corden, MD

Chief Medical Officer - Bureau of Community Health
Promotion, Division of Public Health,
Department of Health Services, State of Wisconsin
Adjunct Professor of Pediatrics, Medical College of
Wisconsin
Adjunct Associate Professor, Population Health,
UW School of Medicine and Public Health

F. Javier Nieto, MD, MPH, PhD

Chair, UW Department of Population Health Sciences
Professor, Population Health Sciences and Family Medicine,
UW School of Medicine and Public Health

Tom Oliver, PhD, MHA

Professor, Population Health Sciences
Director, UW Master of Public Health Program,
UW School of Medicine and Public Health

Patrick Remington, MD, MPH

Associate Dean for Public Health
Professor, Population Health Sciences,
UW School of Medicine and Public Health

Gordon Ridley, MS

Adjunct Professor Emeritus, Population Health Sciences
Consultant to Dean, UW School of Medicine
and Public Health

Maureen A. Smith, MD, MPH, PhD

Professor, Departments of Population Health Sciences,
Surgery, and Family Medicine
Director, Health Innovation Program
Director, Community-Academic Partnerships Core, and
Assistant Director for UW Institute for Clinical and
Translational Research
Associate Director for Population Sciences, UW Carbone
Cancer Center, UW School of Medicine and Public Health

Barbara (Bobbi) Wolfe, PhD

Richard A Easterlin Professor, Department of Economics,
La Follette School of Public Affairs and Department
of Population Health Sciences, University of
Wisconsin-Madison

Susan Webb Yackee, PhD

Associate Professor of Political Science and Public Affairs
Director of the La Follette School of Public Affairs,
University of Wisconsin-Madison

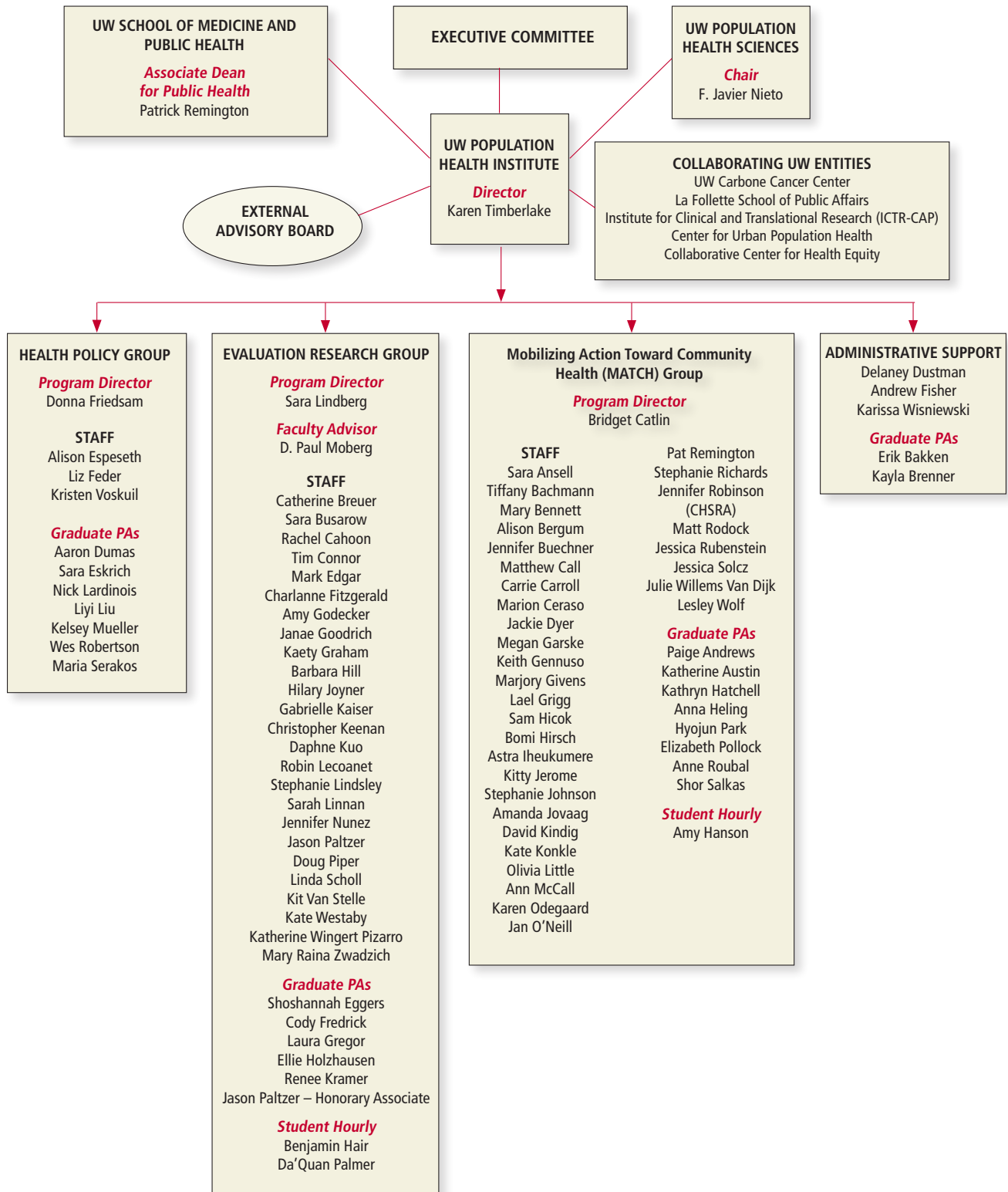
Susan Zahner, DrPH, MPH

Vilas Distinguished Achievement Professor,
UW School of Nursing
Associate Dean for Academic Affairs, UW School of Nursing

University of Wisconsin

School of Medicine and Public Health (UW SMPH)

UW Population Health Institute



Institute Staff in 2015

Sara Ansell, MSW, MSSP, Associate Researcher
 Tiffany Bachmann, MA, University Services Associate II
 Mary Bennet, MFA, Associate Researcher
 Alison Bergum, MPA, Associate Researcher
 Catherine Breuer, MS, Assistant Researcher
 Jennifer Buechner, BS, Administrative Program Specialist
 Sara Busarow, MD, MPH, Associate Researcher
 Matthew Call, BA, Administrative Program Specialist
 Rachel Cahoon, MPH, Assistant Researcher
 Carrie Carroll, MPA, Researcher
 Bridget Catlin, PhD, MHSA, Senior Scientist and
 MATCH Group Program Director
 Marion Ceraso, MHS, MA, Researcher
 Tim Connor, MS, MA, Associate Researcher
 Delaney Dustman, BA, University Services Program
 Associate
 Jackie Dyer, University Services Associate II
 Mark Edgar, PhD, Researcher
 Allison Espeseth, MS, Health Policy Evaluation Specialist
 Liz Feder, PhD, Associate Researcher
 Andrew Fisher, BA, University Services Program Associate
 Charlanne FitzGerald, MPH, Researcher
 Donna Friedsam, MPH, Distinguished Researcher and
 Health Policy Programs Director
 Megan Garske, BA, Media Specialist
 Keith Gennuso, PhD, Assistant Scientist
 Marjory Givens, PhD, MPH, Associate Scientist
 Amy Godecker, PhD, Associate Scientist
 Janae Goodrich, MS, Senior Research Specialist
 Kaety Graham, BS, Associate Research Specialist
 Lael Grigg, MPA, Assistant Researcher
 Sam Hicok, BS, University Services Associate II
 Barbara Hill, MSW, Senior Research Specialist
 Bomi Hirsch, PhD, Assistant Researcher
 Astra Iheukemere, MBA, MPA, Associate Researcher
 Kitty Jerome, MA, Researcher
 Stephanie Johnson, MSW, Associate Researcher
 Amanda Jovaag, MS, Associate Researcher
 Hilary Joyner, MS, Assistant Researcher
 Gabrielle Kaiser, BS, Research Specialist
 Christopher Keenan, MA, Assistant Researcher
 David Kindig, MD, PhD, Senior Advisor
 Kate Konkle, MPH, Associate Researcher
 Daphne Kuo, PhD, Assistant Scientist
 Olivia Little, PhD, Associate Researcher

Robin Lecoanet, JD, Researcher
 Sara Lindberg, PhD, MS, Associate Scientist and Evaluation
 Research Program Director
 Stephanie Lindsley, MSW, Assistant Researcher
 Sarah Linnan, MA, Senior Research Specialist
 Ann McCall, MSW, Outreach Specialist
 D. Paul Moberg, PhD, Senior Scientist, Research Professor,
 and Faculty Advisor
 Karen Odegaard, MPH, Associate Researcher
 Jan O'Neill, MPA, Associate Researcher
 Jennifer Nunez, PhD, Assistant Researcher
 Doug Piper, PhD, Senior Scientist
 Patrick Remington, MD, MPH, Associate Dean for
 Public Health
 Stephanie Richards, MPH, Associate Outreach Specialist
 Matt Rodock, MPH, Assistant Researcher
 Jessica Rubenstein, MPA, Assistant Researcher
 Jessica Solcz, MPH, Assistant Researcher
 Todd Stanley, University Services Associate
 Karen Timberlake, JD, Director, Associate Professor (CHS)
 Linda Scholl, PhD, Associate Researcher
 Kit Van Stelle, MA, Researcher
 Kristen Voskuil, MA, Associate Researcher
 Kate Westaby, MS, Assistant Researcher
 Julie Willems Van Dijk, PhD, RN Associate Scientist
 Katherine Wingert Pizarro, MS, Assistant Researcher
 Karissa Wisniewski, BA, Research Manager
 Lesley Wolf, BA, Outreach Specialist
 Mary Raina Zwadzich, MSW, Outreach Specialist

Institute Graduate Students in 2015

Paige Andrews	Renee Kramer
Katherine Austin	Nick Lardinois
Erik Bakken	Stephanie Lindsley
Kayla Brenner	Liyi Liu
Aaron Dumas	Kelsey Mueller
Shoshannah Eggers	Jason Paltzer
Sara Eskrich	Hyojun Park
Cody Fredrick	Elizabeth Pollock
Laura Gregor	Wes Robertson
Kathryn Hatchell	Anne Roubal
Anna Heling	Shor Salkas
Elizabeth Holzhausen	Maria Serakos

Conferences, Seminars, Publications, Programs

Health Policy Conferences

Wisconsin State Forum to Advance Healthy Communities: Bridging Health Care and Public Health

Fluno Center, Madison, WI, May 1, 2015

Speakers

David Kindig, UW Population Health Sciences

Mary Pesik, Chronic Disease Control Team, WI DHS

Sara Gardner, Executive Director, Fund for Public Health in New York

Carlene Pavlos, Massachusetts Prevention and Wellness Trust

Rebecca Thompson, Wisconsin Community Health Fund

Karen Timberlake, UW Population Health Institute

Medicaid Provider Payments: Hospitals, Cost-Shifting, and Primary Care Services

Co-produced with the UW Health Innovation Program (HIP) Monona Terrace, Madison, WI, May 5, 2015

Speakers

Austin Frakt, PhD, Boston University Health Economist, Founder and Contributor, The Incidental Economist

Peter W. Garner, MPH, Vice President, Health Care Analytics, The Benefit Services Group

Brian Potter, Senior Vice President, Wisconsin Hospital Association

Stephen Zuckerman, PhD, Co-Director, The Urban Institute Health Policy Center

Institute-Sponsored Seminars

Nutrition, Obesity and Cancer

Tim Byers, MD, MPH, Associate Dean for Public Health Practice, Colorado School of Public Health, Associate Director for Cancer Prevention and Control, University of Colorado Cancer Center

February 2, 2015

Wisconsin's Mass Incarceration of African American Males: What Can We Learn from Milwaukee and Ferguson?

Lois M. Quinn, Sr. Scientist, Employment and Training Institute, University of Wisconsin-Milwaukee

March 2, 2015

The Child Equity Agenda: The Role of Visual Data Cross-Sector Collaborations to Reduce Early Life Adversity

Renee Boynton-Jarrett, MD, Associate Professor of Pediatrics, Boston University School of Medicine, Director, Vital Village Community Engagement Network
April 13, 2015

Building Healthy Communities

Donald Schwarz, MD, MPH, MBA, Portfolio Director, Robert Wood Johnson Foundation
May 4, 2015

Investing in Healthy Rural Communities: Harvesting the Power of People, Place and Partnerships

Jointly sponsored by: UW Population Health Institute, Federal Reserve Bank of Chicago, Rural Wisconsin Health Cooperative, Forward Community Investments, Southwest CAP, Madison Region Economic Partnership, and Fort HealthCare, Platteville, WI, July 1, 2015

Keynote speakers included:

Dr. David Kindig, UW-Madison

David Erickson, Federal Reserve Bank of San Francisco

Hilary Heishman, Robert Wood Johnson Foundation

Michael Shuman, economist and author of The Local Economy Solution

Tools and Tips for Developing Shared Community Health Improvement Priorities

Karen J. Minyard, Ph.D., Director of the Georgia Health Policy Center and Associate Research Professor, Public Management and Policy, Andrew Young School of Policy Studies, Georgia State University

October 5, 2015

Smarter Spending to Advance Health Improvement and Health Care Outcomes: Opportunities and Challenges in Wisconsin's State Health Innovation Plan

Karen Timberlake, JD, Director of the UW Population Health Institute

November 16, 2015

The Phosphorus Paradox: Global Change and Freshwaters

Stephen Carpenter, PhD, Stephen Alfred Forbes Professor of Zoology; Director, Center for Limnology, University of Wisconsin-Madison

December 7, 2015

Capitol Briefings by the Evidence-Based Health Policy Project

Opioid Abuse in Wisconsin: State Policy, Naloxone, and Prescribing Practices – February 18, 2015

Moderator: Rep. John Nygren
Wisconsin Assembly District 89

Speakers:

Brad Schimel, JD, Attorney General, State of Wisconsin
James Cleary, Director, Pain & Policy Study Group, UW-Madison

Aaron Gilson, Research Program Manager, UW Pain & Policy Study Group

Patrick Knue, Program Coordinator, PDMP Training and Technical Assistance Center, Brandeis University

Cynthia Gaston, Clinical Assistant Professor, UW School of Pharmacy; and Medication Use Policy Analyst, UW Health

Anna Legreid Dopp, Vice President of Public Affairs and Journal Editor, Pharmacy Society of Wisconsin

Scott Stokes, Director of Prevention Services, AIDS Resource Center of Wisconsin

E-Cigarettes: An Update on the Science – April 15, 2015

Moderator: Rep. Jessie Rodriguez
WI Assembly District 21

Speakers:

Karmen Hanson, MA, Health Program Manager, National Conference of State Legislatures

Dorothy Hatsukami, PhD, Associate Director of Cancer Prevention and Control at the Masonic Cancer Center; Forster Family Chair in Cancer Prevention; Professor of Psychiatry, University of Minnesota

Stephen Hecht, PhD, Wallin Land Grant Professor of Cancer Prevention, Dept. of Laboratory Medicine and Pathology, University of Minnesota

An Ebola Vaccine: Breakthrough Science from Wisconsin's Laboratories – April 21, 2015

Introduction by: Rep. Joe Sanfelippo
WI Assembly District 15

Speaker:

Yoshihiro Kawaoka, PhD, DVM, Professor of Pathobiological Sciences, School of Veterinary Medicine, University of Wisconsin

Social Impact Bonds/Pay for Success in Health: A New Tool to Address Social Problems – May 20, 2015

Moderator: Senator Van Wanggaard
WI Senate District 21



Speakers:

Tyler Jaeckel, JD, MPP, Assistant Director, Harvard Kennedy School Social Impact Bond Lab

Nima Krodel, MBA, Director, Nonprofit Finance Fund

Population-based Approaches to Children's Mental Health – October 29, 2015

Moderator: Representative Paul Tittl
WI Assembly District 25

Speakers:

Elizabeth Hudson, Director, Office of Children's Mental Health

Kirsten Rindfleisch, MD, Medical Site Director, Access Community Health

Walker Shapiro, MD, Resident Physician, Wingra Family Medical Center, Access Community Health

Hugh Davis, Executive Director, Wisconsin Family Ties

Sharyl Kato, MS, LPC, Director, The Rainbow Project

Chuck Price, Director, Waupaca County DHHS

Health Care Hotspotting: How Providers, Payers, and Communities Can Save Money and Improve Health by Focusing Their Efforts – December 10, 2015

Moderator: Representative Debra Kolste
WI Assembly District 44

Speakers:

Carter Wilson, Senior Program Manager, Camden Coalition

Kevin Moore, Director, Wisconsin Medicaid Program

Carolyn Krause, VP (retired) of Accountable Care, Independent Care Health Plan (iCare)

Publications

- Athens, J.K., Remington, P.L., and Gangnon, R.E. (2015). Improving the Rank Precision of Population Health Measures for Small Areas with Longitudinal and Joint Outcome Models. *PLoS One*, 10(6): e0130027.
- Hood, C.M., Gennuso, K.P., Swain, G.R., & Catlin, B.B. (2016). County Health Rankings: Relationships between Determinant Factors and Health Outcomes. *Am J Prev Med*, 50(2): 129-135.
- Laudet, A.B., Harris, K., Kimball, T., Winters, K.C., Moberg, D.P. (2015). Characteristics of students participating in collegiate recovery programs: a national survey. *J Subst Abuse Treat*, 51:38-46. PubMed PMID: 25481690; PubMed Central PMCID: PMC4346424.
- Park, H., Roubal, A.M., Jovaag, A., Gennuso, K.P., & Catlin, B. (2015). Relative Contributions of a Set of Health Factors to Selected Health Outcomes. *Am J Prev Med*, 2015, 49(6): 961-9.
- Remington, P.L. (2015). County Health Rankings and the Cult of the Imperfect. *Health Serv Res*, 50(5): 1407-12.
- Remington, P. L., Catlin, B. B., & Gennuso K. P. (2015) The County Health Ranking: rationale and methods. *Popul Health Metr*, 13(11).
- Roubal, A. M., Jovaag, A., Park, H., & Gennuso, K. P. (2015). Development of a nationally representative built environment measure of access to exercise opportunities. *Prev Chronic Dis*, 12, E09.
- Timberlake, K., Roubal, A., Hatchell, K., Catlin, B., Remington, P. (2015). A novel approach for measuring and communicating state health trends over time. *Wisconsin Medical Journal*, 114(6): 240-245.
- Willems Van Dijk, J.A., Catlin, B., Carroll, C., Cofsky, A. (2015). Challenges and lessons learned from communities using evidence to adopt strategies to improve healthy food environments. *Health Aff (Millwood)*, 34(11): 1979-85.

Reports

Examining the Factors behind Wisconsin's Health Insurance Premium Levels: Why do they seem high relative to other states?

Discussion Paper. Prepared by Friedsam D. 2015.

Fit Families Supplemental Nutrition Assistance Program-Education (SNAP-Ed) Evaluation Report

Lindsley S, Busarow S, Lecoanet R. 2015.

Wisconsin Chronic Disease Quality Improvement Project: HEDIS® 2014 Summary Data

Prepared by Busarow S, Link J, Pesik M, Timberlake K. Madison, WI: University of Wisconsin Population Health Institute. 2015.

County Health Rankings 2015 Key Findings Report

Prepared by Catlin BB, Jovaag AR, Remington PL, Willems Van Dijk J. March 2015.

Evaluation of the Dane County Deferred Prosecution Child Abuse Initiative (DPCAI)

Project Report to the American Bar Association for the national Racial Justice Improvement Project; in collaboration with the Dane County District Attorney's Office and the Dane County Equity and Criminal Justice Council. Prepared by Van Stelle KR, Goodrich J. June 2015.

What Works? Strategies to Improve Rural Health

Prepared by Bergum AH, Catlin BB, Timberlake K. July 2015.

Opportunities to Make Wisconsin the Healthiest State

Prepared by Hatchell K, Roubal AM, Catlin BB, Timberlake K. September 2015.

County Health Rankings 2015 State Health Gaps Reports

Prepared by Catlin BB, Givens M, Willems Van Dijk J. November 2015.

eNEWS – Published Monthly

Available at <http://uwphi.pophealth.wisc.edu/publications/issue-briefs/index.htm>

Fact Sheets

Fredrick, C., Haralampopoulos, M.R., Lindsley, S., Linnan, S. (2015). Operating while intoxicated (OWI) in Wisconsin. Prepared by the University of Wisconsin Population Health Institute on behalf of the Wisconsin Department of Health Services, P-00985.

Haralampopoulos, M.R., Fredrick, C., Lindsley, S., Linnan, S. (2015). Underage drinking in Wisconsin. Prepared by the University of Wisconsin Population Health Institute on behalf of the Wisconsin Department of Health Services, P-00983.

Haralampopoulos, M.R., Lindsley, S., Linnan, S. (2015). Neonatal abstinence syndrome in Wisconsin. Prepared by the University of Wisconsin Population Health Institute on behalf of the Wisconsin Department of Health Services, P-01124.

Lindsley, S., Haralampopoulos, M.R., Linnan, S. (2015). Opioid overdose prevention in Wisconsin. Prepared by the University of Wisconsin Population Health Institute on behalf of the Wisconsin Department of Health Services, P-01129.

Lindsley, S., Haralampopoulos, M.R., Linnan, S. (2015). Trauma and substance use in Wisconsin. Prepared by the University of Wisconsin Population Health Institute on behalf of the Wisconsin Department of Health Services, P-01128.

Lindsley, S., Haralampopoulos, M.R., Linnan, S. (2015). Alcohol and drug-facilitated sexual assault in Wisconsin. Prepared by the University of Wisconsin Population Health Institute on behalf of the Wisconsin Department of Health Services, P-01052.



Linnan, S., Haralampopoulos, M.R., Lindsley, S. (2015). Misuse and abuse of opioids in Wisconsin. Prepared by the University of Wisconsin Population Health Institute on behalf of the Wisconsin Department of Health Services, P-01127.

Linnan, S., Fredrick, C., Haralampopoulos, M.R., Lindsley, S. (2015). Adult binge drinking in Wisconsin. Prepared by the University of Wisconsin Population Health Institute on behalf of the Wisconsin Department of Health Services, P-00984.

Selected Abstracts and Presentations

FASD Training of Trainers

Mary Raina Haralampopoulos, Pyle Center in Madison, WI
February 2015

Asset-based Community Assessment

Lesley Wolf, Brown County Childhood Injury Prevention
Assessment, De Pere, WI
April 2015

Developing your Persuasive message: 27-9-3 tool

Kate Konkle
April 2015

Introduction to Roadmaps to Health Coaching

Jan O'Neill, Connecticut Department of Public Health
April 2015

Beyond the Quitline: Creating Health for All

Kitty Jerome, University of Arkansas, Pine Bluff AR
May 2015

Using ArcGIS to Create a Measure of Physical Activity

Amanda Jovaag, Council for State and Territorial
Epidemiologists Annual Conference, Boston MA
June 2015

County Health Rankings & Roadmaps: From Data to Action

Bridget Catlin, National Health Policy Forum, Washington DC
July 2015

Effective Public Health Communication

Marion Ceraso, Local Health Officer Orientation, Madison WI
July 2015

Roadmaps to Health: Moving from Data to Action

Stephanie Johnson, Rural Health Network of Rusk County, WI
July 2015



County Health Rankings & Roadmaps

Mary Bennett, Carroll College
September 2015

Using Evidence in Decision Making: What Works for Health

Alison Bergum, Barron County
September 2015

The Community Development-Health Intersection

Astra Iheukumere, Opportunity Finance Network Conference,
Detroit MI
November 2015

The Effects of Expanding Public Insurance on Utilization: Early Results from Wisconsin

ME Burns, KR Voskuil, DA Friedsam, T DeLeire, L Dague, L
Leininger; Association for Public Policy and Management,
Miami, FL
November 2015

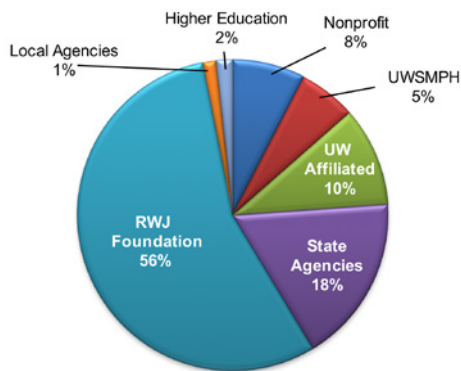
Building a Culture of Health: A Nursing Call for Action

Julie Willems Van Dijk, Future of Nursing Campaign for Action,
Washington DC
December 2015



Budget

The Institute's total budget for 2015 was approximately \$8.6 million. This funding comes from a diverse mix of sources, including the Robert Wood Johnson Foundation, the Wisconsin Partnership Program, Wisconsin state agencies, local and tribal agencies, federal agencies, UW School of Medicine and Public Health, and several foundation and other non-profit sources. Federal funds flow to the Institute via several of these resources. The following graph summarizes each funding source as a percent of the Institute's total budget. Representative projects in each category are listed, following the graph:



National, State, Tribal & Community Organizations

Great Lakes Inter-Tribal Council, Inc.

- Family Foundations Home Visiting Program
- Healthy Start

Lac Courte Oreilles Band of Lake Superior Chippewa Indians

- Mino Maa'jisewin Home Visiting Program

National Network of Public Health Institutes

- Health Impact Assessment Project

Wisconsin Statewide Health Information Networks

- State Health Innovation Plan

Local Agencies

Adams-Friendship School District

- Project Advancing Wellness and Resilience in Education
- School Counseling Program

Ashland County Health & Human Services

- Health and Economic Development Summit Evaluation

Central WI Health Partnership

- Adult Drug Treatment Court
- Project Advancing Wellness and Resilience in Education

Fond du Lac County Community Programs

- Adult Drug Treatment Court

Dane County

- Racial Injustice Improvement Project

Jackson County

- Community Survey Design & Analysis

School District of Beloit

- Safe Schools/Healthy Students

State Agencies

South Dakota Department of Social Services

- Strategic Prevention Framework State Incentives

WI Department of Corrections, Department of Health Services and Department of Justice

- Evaluation for the Treatment & Diversion Programs

WI Department of Corrections

- Disproportionate Minority Contact

WI Department of Health Services

- Evaluation of BadgerCare Plus
- Fit Families – Supplemental Nutrition Assistance Program Education
- Chronic Disease Program Integration and Coordinated Chronic Disease Prevention and Health Promotion
- Improving Birth Outcomes
- Mental Health Program Evaluation
- National Public Health Improvement Program
- Project Youth Extension Service
- State Innovation Models
- Strategic Prevention Framework Partnership for Success II
- Tobacco Prevention and Control Program
- Wisconsin Diabetes Quality Improvement Collaborative

WI Department of Public Instruction

- Safe and Supportive Schools

Higher Education

Vanderbilt University

- Recovery Schools as Continuing Care

Robert Wood Johnson Foundation

- County Health Rankings & Roadmaps
- Population Health Mean and Disparity Index

UW School of Medicine & Public Health

- UWPHI Core Funding

UW Affiliated-Foundations & Programs

UW Partnership Program

- Adams County Community Wellness Program
- Building the Infrastructure to Make Wisconsin the Healthiest State: Strengthening and Integrating Community Health Improvement Processes and Plans
- Evaluation of the Lifecourse Initiative for Healthy Families
- Evidence-based Health Policy Project
- Healthy Wisconsin Leadership Institute
- Increasing Cultural Congruence among Nurses in Wisconsin
- Making Wisconsin the Healthiest State
- Wisconsin Population Health Service Fellowship Program

UW Institute for Clinical Translational Research

- Disparities in Wisconsin's Diabetes Outcome
- Institute for Clinical Translational Research Program Evaluation



**University of Wisconsin
Population Health Institute**
SCHOOL OF MEDICINE AND PUBLIC HEALTH

Department of Population Health Sciences
University of Wisconsin School of Medicine and Public Health
575 WARF Building
610 Walnut Street Madison, WI 53726-2336

Phone: (608) 263-6294 Fax: (608) 262-6404

Email: UWPHI@med.wisc.edu | Web: uwphi.pophealth.wisc.edu | Twitter: [@UWiscPHI](https://twitter.com/UWiscPHI)