



Translating Research for Policy and Practice

Annual Report 2014



Contents

- 2 Introduction from Director Karen Timberlake
- 4 Mission Statement
- 5 Community Advisory Board
- 6 Affiliated Faculty Investigators
- 7 Institute Programs and Cross-Cutting Themes
- 8 Health Policy
- 9 Program Evaluation
- 10 Mobilizing Action Toward Community Health (MATCH)
- 11 Service Learning
- 12 Wisconsin Population Health Service Fellowship
- 13 Community Engagement
- 14 Evidence Based Practice
- 15 Executive Committee
- 16 UW Population Health Institute Organizational Chart
- 17 Institute Staff in 2014
- 18 Conferences, Seminars, Publications, Programs
- 19 Capitol Briefings by the Evidence-Based Health Policy Project
- 20 Publications
- 20 Reports
- 21 Selected Abstracts and Presentations
- 22 Budget



Karen Timberlake

*Director,
Population Health Institute*

Each year, the UW Population Health Institute (UWPHI) produces the national County Health Rankings & Roadmaps

with the support and partnership of the Robert Wood Johnson Foundation. This work began in Wisconsin, and 2014 marked the fifth *national* release of the County Health Rankings. Two members of the UWPHI advisory board wrote thoughtful opinion pieces on the ways in which the County Health Rankings & Roadmaps inform their work and that of their collaborators, and I'm pleased to share them with you. I also encourage you to review the rest of this Annual Report for the highlights of an eventful year all across the Institute!



Tim Size

Population Health Institute Community Advisory Board Member and RWHC Executive Director

Health is about more than access to high quality healthcare. The conditions that influence health in our workplaces, our schools and our communities are as important as access to health insurance, a doctor's office, or a hospital.

This is what we learn from the annual release of the County Health Rankings, a collaboration between the Robert Wood Johnson Foundation and the University of Wisconsin Population Health Institute.

Unlike Lake Wobegon where all the children are above average, most rural counties rank below average in health status. I work for a cooperative of rural hospitals and clinics, and at first glance, you might think this data should make rural health care providers defensive. But as Paul Harvey often said, here is the "rest of the story."

When you look at the factors that determine health status—how long we live, how well we feel—health care is important, but not the only driver. We know that individual behaviors like smoking and exercising matter, and when we look at the data, we see that on average, more adults still smoke in rural communities as compared to suburban and even urban areas. People living in rural communities today have less access to opportunities to exercise.

The Rankings also teach us that education, jobs and income matter to how long and how well people live, and our rural communities tend to have higher rates of unemployment and childhood poverty. The cumulative effect can be, quite literally, deadly.

If you just looked at the ranking of the factors that drive health, you would expect only 13 of Wisconsin's 47 rural counties to be in the top half of counties with the best health. In fact 20 are in the top half. Quite a few rural counties are doing something right, even in the face of disproportionate challenges.

Does this let rural healthcare providers off the hook? Not at all. It just means we have a large hook with plenty of room for company. No single person or organization can tackle this problem alone. Healthcare reform is part of the answer, but it is not enough to accomplish real health reform.

What we care about most deeply is our health and the health of our family, friends and neighbors. When that caring translates into a priority across the whole community, health improves and medical costs decline.

Across Wisconsin and across the country, communities are using the Rankings to understand the health challenges they face, and create local solutions to address them. The Rankings underscore how important it is to build a culture of health where we work together to make sure that everyone—young and old in rural communities and urban neighborhoods—can have an opportunity to live a long and healthy life.

This column first appeared in the Rural Wisconsin Health Cooperative newsletter, May 2014.



Demond Means

Where you live may influence your health

Demond Means is a Population Health Institute Community Advisory Board Member and Superintendent of the Mequon-Thiensville School District.

The health of our friends, neighbors and loved ones is critical to the vitality and vibrancy of any community.

The County Health Rankings are produced annually through a collaboration between the Robert Wood Johnson Foundation and the University of Wisconsin Population Health Institute in Madison. The rankings illustrate in a powerful way that where you live can influence how long and how well you live. The rankings show us that neighboring counties can have dramatically different health outcomes.

I experience this dichotomy every day. As a school superintendent in Ozaukee County, ranked as the healthiest county in Wisconsin, my school district benefits from the positive impact of a focus and emphasis on health. In Ozaukee County, the enterprise of teaching and learning is significantly aided by the health of the community.

According to the rankings, 95% of Ozaukee County's ninth-graders graduate from high school in four years, compared to 87% of ninth-graders in the state as a whole and 74% in Milwaukee County. Ozaukee County residents are less likely to smoke and less likely to be obese. They report feeling better, mentally and physically, on average. They are less likely to die before age 75 than their neighbors just to the south.

This comparison matters a great deal to me because I live in Milwaukee County, as do family and many friends. Milwaukee County ranks at or near the bottom consistently in the County Health Rankings. The poor health status of my home county has an adverse impact on employment, family structures and educational attainment. The collective health of my neighbors cannot be ignored when analyzing the results of this report.

As a Milwaukee County resident, I serve on the Social Development Commission. Recently, the SDC has commissioned a task force to address the issue of youth and poverty in the county. We know from the rankings and from other research that we have a serious problem with child poverty in Milwaukee County and that poverty and health are closely related.

We also know that we continue to struggle with creating opportunities for health for our very youngest children. If it is more difficult for infants in Milwaukee County — and African-American infants in particular — to achieve a healthy start to life, how do we expect them to meet other challenges, such as educational attainment, maintaining a proper diet and achieving a livable wage?

The disparity I witness each day as I drive from Milwaukee County to Ozaukee County is something that has motivated me to focus my volunteer time and intellectual energy toward positively and effectively closing the health gap in Wisconsin. The inequities demonstrated by the rankings demand urgent attention from all of us, whether we are community members, civic leaders or policy-makers.

We can no longer continue to fail the next generation of Wisconsinites by simply ignoring the glaring differences in the health status of our fellow citizens. The data in the rankings, and the strategies to take action and improve the many factors that contribute to health found in the County Health Roadmaps, will assist my work with the SDC Youth and Poverty Task Force.

It is my passion to ensure that opportunities afforded my students in Ozaukee County are made available to the children and families in Milwaukee County as well. The information also will continue to inform my work as a school superintendent in Ozaukee County, where we strive to maintain our status as a healthy and desirable community.

I urge you to become familiar with the County Health Rankings data and the Roadmaps action strategies. Go to www.countyhealthrankings.org and learn what you can do, working with others, to create opportunities for better health for all members of our community, regardless of where they live, how much money they make or where they come from.

How we care for our neighbors, family and friends is the best indicator of our civic character. It is important that we stop this cycle of failing to address the needs of our fellow citizens. If Wisconsin is to achieve its full economic, educational and civic potential, we must analyze and proactively address health disparities and create a culture of health that reaches all of our communities.

Demond A. Means

This column first appeared in the Milwaukee Journal Sentinel, March, 2014.

Our Mission:

Translating Research for Policy and Practice

The UW Population Health Institute advances health and well-being for all by developing and evaluating interventions and promoting evidence-based approaches to policy and practice at the local, state, and national levels. The Institute works across the full spectrum of factors that contribute to health.

A focal point for health and health care dialogue within the University of Wisconsin-Madison, and a convener of stakeholders, the Institute promotes an exchange of expertise between those within the university and those in the policy and practice arena.

Our Goals:

- ◆ *Address* a broad range of real-world, health-related problems of topical interest and stakeholder relevance
- ◆ *Promote* partnerships between researchers and users of research, encouraging collaboration between the academic community and those engaged in practice and policy within both the public and private sectors;
- ◆ *Evaluate* programs and policies to support quality improvement, promote accountability, and seek evidence-based solutions;
- ◆ *Build* the knowledge base of effective programs and policies;
- ◆ *Provide* learning opportunities for practitioners and students; and
- ◆ *Contribute* to policy decisions and program implementations that improve health and well-being for all.



PHOTO: Jeff Miller/UW-Madison University Communications

Our Values:

Impact: Have an impact on problems that matter

Action: Support action based on research and data

Influence: Leverage the assets of the University in service to the greater community

Collaboration: Work in diverse partnerships, respecting and drawing upon the strengths and assets that partners bring

Creativity: Seek out innovative and pragmatic solutions

Curiosity: Foster knowledge exchange across sectors

Excellence: Uphold a commitment to excellence and continuous quality improvement

Community Advisory Board

The Institute is guided by a Community Advisory Board, with members from the health care, public health, business, and education sectors, as well as leaders from Wisconsin's legislature.

The Board meets two to three times per year to guide the work of the Institute and provide feedback on its programs and publications.

Advisory Board Members in 2014

Bevan Baker

Milwaukee Health Commissioner
City of Milwaukee Health Department

Tim Bartholow

VP & Chief Medical Officer
WEA Trust

Steve Brenton

President
Wisconsin Hospital Association

Cheryl DeMars

President and CEO
The Alliance

Kurt Eggebrecht

Health Officer
Appleton City Health Department

Curt Gielow

Campus Chief Executive
School of Pharmacy
Concordia University-Ann Arbor

Senator Julie Lassa

Wisconsin State Senate

Demond Means

Superintendent
Mequon-Thiensville School District

Senator Terry Moulton

Wisconsin State Senate

Gregory Nycz

Director of Family Health Center
of Marshfield Inc.

Representative Sandy Pasch

Wisconsin State Assembly

Christopher Queram

President/CEO
WI Collaborative for Healthcare Quality

Ayaz Samadani

Family Physician
Dean/St Mary Regional Clinic

Annette Severson

Associate Chief Nurse
Nursing Education and Research
Zablocki VA Medical Center

Greg Simmons

President and CEO
MetaStar, Inc.

Tim Size

Executive Director
Rural Wisconsin Health Cooperative

Jeff Stone

Wisconsin Public Service Commission

Dick Tillmar

Owner
Tillmar Connect, LLC

Affiliated Faculty Investigators



Alex Adams, MD, PhD

Director, Collaborative Center for Health Equity
Professor, Department of Family Medicine
UW School of Medicine and Public Health



Lindsey Leininger, PhD, MA

Assistant Professor
University of Illinois-Chicago



Marguerite Burns, PhD

Assistant Professor
UW School of Medicine and Public Health



D. Paul Moberg, PhD

Research Professor, UW School of Medicine
and Public Health
Director for Evaluation, Institute for Clinical
Translational Research
Senior Scientist, Population Health Sciences



Laura Dague, PhD

Assistant Professor
Texas A&M University



Tom Oliver, PhD, MHA

Professor, Population Health Sciences
UW School of Medicine and Public Health



Thomas DeLeire, PhD

Professor
Georgetown University



Patrick Remington, MD, MPH

Associate Dean for Public Health,
UW School of Medicine and Public Health
Professor, Population Health Sciences



Deb Ehrenthal, MD, MPH, FACP

Associate Professor, Lifecourse Initiative for
Healthy Families Endowed Chair
UW School of Medicine and Public Health



Karen Timberlake, JD

Associate Professor (CHS), Population
Health Sciences
Director, Population Health Institute,
UW School of Medicine and Public Health



Jonathan Jaffery, MD

Associate Professor, UW School of Medicine
and Public Health
Medical Director, Delivery System Innovation,
UW Medical Foundation



David Weimer

Edwin E. Witte Professor of Political Economy
UW La Follette School of Public Affairs



David Kindig, MD, PhD

Emeritus Professor, Population Health Sciences
Emeritus Vice-Chancellor, Health Sciences
UW School of Medicine and Public Health



Barbara Wolfe, PhD

Professor, Economics
Professor, Population Health Sciences
Professor, UW La Follette School of Public Affairs

Institute Programs and Cross-Cutting Themes

The Institute is led by leaders of national stature in applied public health and health policy research. Our progress during 2014 could not have been achieved without the ongoing contributions from members of our Community Advisory Board and support from the University of Wisconsin School of Medicine and Public Health and the Wisconsin Partnership Program.

The Programs of the Institute

Health Policy: Engages in research, consulting, and analysis in partnership with Wisconsin's leading public and private sector policymakers in health and health care, focusing especially on cost, financing, coverage, access, and health system performance.

Program Evaluation: Conducts evaluation of a diverse range of public health and human service programming, including substance abuse prevention and treatment, maternal and child health, school health promotion, criminal justice populations, treatment courts, mental health, and chronic disease.

Mobilizing Action Toward Community Health (MATCH): Monitors and assesses population health, engages communities across the nation in community health improvement, and connects the Institute to the public health and health care sectors in the state through seminars, conferences, training programs, and an active website.



Cross-Cutting Themes

Service Learning: Serves as a population health 'laboratory' for professional development, where graduate students and fellows apply their skills to real-world issues and settings.

Community Engagement: Fosters strong partnerships between the University of Wisconsin and population health practitioners and policymakers.

Evidence-Based Practice: Produces, evaluates, and disseminates research to support "what works" in policy and practice.



Health Policy



Donna Friedsam
 Researcher and
 Health Policy Programs Director

Description: The Institute's health policy programs connect the University of Wisconsin School of Medicine and Public Health to Wisconsin's leading public and private sector policymakers in the health care and public health arenas with particular focus on cost, financing, access, coverage, policy reforms and on health system performance. The group conducts primary research and communicates new and existing evidence and analyses through issue briefs, consultancies, briefings, forums, symposia, and collaborative research.

Primary Stakeholders: Legislators, legislative and administrative agency staff, and health care provider, purchaser, payer, business and consumer groups.

Highlights from 2014

Health Financing and System Reform

- Completed evaluation of Wisconsin's 2012 Medicaid waiver, its impact on health care utilization and enrollment by parents, caretaker adults, and childless adults. Submitted final Scientific and Technical Report for DHS and CMS, published in peer-reviewed journals, and presented findings at national meetings.
- Conducted an evaluation of Medicaid's Medical Homes for high risk pregnant women in Southeastern Wisconsin, assessing the changes made by clinics and HMOs, their impact on care delivery and birth outcomes.
- Served on the Wisconsin Medicaid agency's Strategic Workgroup to plan for the implementation of Wisconsin's entitlement reforms and of the Affordable Care Act.
- Produced chartpack monitoring ACA enrollment and changes in BadgerCare enrollment.

- Delivered a research paper at the Brookings Institution at a meeting on Evolving a Research Strategy for the Affordable Care Act.
- Produced the Wisconsin Field Report on ACA implementation, published by the Rockefeller Institute of Government/Brookings Institution.
- Served as a contracted advisor to UW Extension on health care access, coverage, and ACA implementation.

Evidence-Based Health Policy Project

- Delivered a public health class on use of evidence in policy making, contributed to the University of Wisconsin School of Medicine and Public Health integrated cases for training of medical students, training them in health policy and interaction with elected officials, and conducted a summer seminar on Health Impact Assessment.
- Delivered Capitol briefings focusing on Telemedicine and on Pharmaceutical Waste in Wisconsin's Water.

Teaching Applied Health Policy

- Mentored two La Follette and four MPH graduate students as project assistants, and two economics doctoral students.
- Delivered a summer course on Wisconsin health systems and financing, and lectured throughout campus courses, particularly focusing on the federal Patient Protection and Affordable Care Act.

Health Impact Assessment

- HIA on Alcohol Outlet Density selected by SOPHIA (Society of Practitioners of Health Impact Assessment) as a 2014 Model HIA Report: "This HIA has a particularly robust literature review and strong evidence base to support its recommendations. It also includes strong community engagement and has a very good process evaluation."

Program Evaluation



Paul Moberg
Research Professor,
Program and Faculty Director

Description: The Program Evaluation group conducts assessments of state and local programs in public health and human services. The group also maintains directly-funded evaluation research projects, using experimental and quasi-experimental designs to conduct rigorous evaluation of innovative programs.

Primary Partners: Community, tribal, county, and state governmental agencies; collaboration with national researchers, practitioners, and faculty and staff within the University of Wisconsin.

The Program Evaluation group was involved in over 35 actively-funded projects during 2014. Evaluations include a diverse range of program concerns: substance abuse, health promotion, mental health, nutrition, maternal and child health, school health, criminal justice populations, treatment courts, and chronic disease.

Major Evaluation Projects:

- Strategic Prevention Framework State Incentive Grant (SPF SIG) in South Dakota— funded by the U.S. Substance Abuse and Mental Health Services Administration (SAMHSA).
- Recovery Schools for high school students with substance use disorder – funded by the National Institute on Drug Abuse.
- Wisconsin Statewide Health Information Network (WISHIN) designed to enable the exchange of electronic structured laboratory results, electronic prescriptions, and patient summary of care records. Evaluation also assessed WISHIN's reach and coverage of pharmacy and laboratory reporting as well as participation by health care provider organizations.

- Correctional health programs providing Treatment Alternatives and Diversion (TAD) for offenders with substance abuse problems. Conducted under contract with the Wisconsin Department of Corrections, in collaboration with the Department of Justice and the Department of Health Services.
- A national program addressing the prevention of childhood agricultural injuries funded by the National Institutes of Health.
- **Health Disparities:** Several projects focus on Native American health, in partnership with the Great Lakes Inter-Tribal Council, and on African American and Latino health, in partnership with the Wisconsin Division of Public Health, the Department of Public Instruction and the Wisconsin Partnership Program.

Examples of the Services Provided:

- Designing and implementing comprehensive program evaluations.
- Developing a wide range of evaluation designs and needs assessments.
- Developing data collection methods and survey instruments.
- Monitoring program services (e.g., measuring progress in reaching program objectives).
- Conducting qualitative research, including content analysis, intensive interviews, focus groups, and site visits.
- Statistical analysis of data from surveys, administrative data, and program-specific data sets.

Mobilizing Action Toward Community Health (MATCH)



Bridget Catlin
Senior Scientist and Program Director

Description: The MATCH group focuses on helping communities identify and implement solutions that make it easier for people to be healthy in their homes, schools, workplaces, and neighborhoods.

Our group engages with communities in the following activities:

- Monitoring health and health disparities;
- Moving from data to action by bringing people together to look at the many factors that influence health, select strategies that work, and make changes that will have a lasting impact;
- Reviewing evidence on policies and programs to inform health policy, program planning, and evaluation;
- Disseminating information in user-friendly formats to motivate action toward community health improvement; and
- Producing seminars, workshops, and life-long learning opportunities for community leaders and public health practitioners.

Our ultimate goal is to empower communities to improve the health of their population. To assure we are meeting the emerging needs of communities, we encourage ongoing dialogue with community members via our websites, webinars, email, phone, or in-person discussions or presentations.

Primary Partners

Diverse organizations and individuals at the national, state, and local levels from non-profit, academic, governmental, business, and local public health sectors working to improve the health of the state of Wisconsin and across the nation.

Major Projects

- *County Health Rankings & Roadmaps*
- Making Wisconsin the Healthiest State
- Healthy Wisconsin Leadership Institute
- Population Health Service Fellowship Program
- First Monday Seminar Series
- Community Health Assessment and Planning

County Health Rankings & Roadmaps

The County Health Rankings & Roadmaps program, funded by the Robert Wood Johnson Foundation (RWJF), includes the County Health Rankings, launched for the fifth time in March 2014, the *Roadmaps to Health* project that began in April 2011, and the RWJF Culture of Health Prize. Ranking the health of nearly every county in the nation, the *County Health Rankings* illustrate what we know when it comes to what's making people sick or healthy. The *Roadmaps* show what we can do to create healthier places to live, learn, work, and play.

New in 2014:

- RWJF renewed funding for the CHR&R for at least two more years with additional funds to expand the coaching capacity of the *Roadmaps to Health Action Center*.
- Creation of a national *County Health Rankings* Scientific Advisory Group, chaired by Patrick Remington, MD, MPH.
- The Announcement of the second six *RWJF Culture of Health Prize* winners, selected from a pool of over 250 applications from communities across the nation focusing on creating a Culture of Health.

Making Wisconsin the Healthiest State

With funding from the Wisconsin Partnership Program, University of Wisconsin School of Medicine and Public Health, this project has three main goals:

- Measure, assess, and report on Wisconsin's health and health disparities
- Support local efforts in health improvement (including the Wisconsin version of *What Works for Health*)
- Support statewide impact on policy, systems, and environmental changes for health

Visit our new website, www.improvingWIhealth.org, which houses information on shared priorities from community health assessments and improvement plans from local health departments and hospitals.

Service Learning

Description: The Institute's programs provides students and fellows the opportunity to "learn while doing." This focus on service learning adds to coursework that students take. Students working with the Institute are enrolled in the Population Health MS/PhD program, Master of Public Health (MPH) program, the La Follette School of Public Affairs, the Department of Economics, and elsewhere. The Institute serves as a population health "laboratory" for learning, where students apply their skills to real-world issues and settings, and have an opportunity to publish results as issue briefs or articles.

Primary Partners: State and local health and health care leaders who provide service learning opportunities for students working in the Institute, or for fellows in the Wisconsin Population Health Service Fellowship.

Healthy Wisconsin Leadership Institute

www.hwli.org

The Healthy Wisconsin Leadership Institute (HWLI) is a continuing education and training resource to provide public and community health education and leadership development throughout Wisconsin. HWLI is supported jointly by the University of Wisconsin School of Medicine and Public Health and the Medical College of Wisconsin. HWLI holds regional workshops and also administers the year-long Community Teams Program, focusing on building public health and collaborative leadership skills for teams as they work to address health priorities in their communities. A cohort of six community teams graduated from the program in June 2014. The eighth cohort (2014-2015) includes six teams representing community health initiatives:

2014-2015 Community Teams

Lake County Health and Wellness Alliance- Promoting community wellness through partnerships.

East Central Health in Planning Team- Incorporating health into regional planning processes.

South Central Wisconsin Transgender and Gender Non-Conforming Coalition- Improving health among the transgender and gender non-conforming community.

Transforming Wisconsin Food Systems Leadership Team- Preventing obesity by increasing access to, and consumption of healthy, local food.

Wisconsin Minority Health Leadership Team (WI MHLT) Improving mental health and alcohol and other drug abuse outcomes for minority populations in Wisconsin.

2013-2014 Community Teams

Care Transitions Coalition Team of Winnebago County

Healthy Communities Council/Mental Health Action Team of Eau Claire County

Polk United Team

Langlade County Health Coalition Team

Lifestyle Initiative for Fitness Empowerment Team

Suicide Prevention and Mental Health Awareness Committee of Portage County Team

For communities who have already participated in the Community Teams Program, the COACH Program offers three years of support to strengthen regional skills for implementing policy, systems and environmental changes that will improve health in Wisconsin. Teams participate in peer learning through cross-community networking visits to advance community health improvement. The first cohort (2014-2017) includes five teams:

2014-2017 Coach Teams

(W3) Working for Whitewater's Wellness- addressing obesity through increasing physical activity, healthful eating, social connectedness, and positive outlook.

Fort Healthcare Healthy Communities Coalition- Comprised of six local coalitions promoting healthful living through environmental changes that increase community access to physical activity and availability and consumption of drinking water.

LIFE (Lifestyle Initiative for Fitness Empowerment) Foundation- Improving nutrition and increasing physical activity in a local safe environment to ultimately lower obesity-related disease risk.

Wisconsin Active Communities Alliance (WACA)- Increase physical activity in communities across Wisconsin by making it easier and more inviting for people to move actively to, from, and at their destinations.

Healthy People Project of Washington County- Improve nutrition by increasing awareness and access to healthier food choices. Increase opportunities for and promote physical activity of residents.

Wisconsin Population Health Service Fellowship

<http://uwphi.pophealth.wisc.edu/programs/match/fellowship/index.htm>

The Fellowship program serves to develop the next generation of public health leaders skilled in planning, implementation, and evaluation of public health programs.

This two-year Fellowship program provides recent masters level graduates with service and training opportunities in community based, non-profit, governmental, and health service organizations.

2014-2016 Population Health Service Fellows and Placement Sites

Jameela Ali

UW-Madison Global Health Institute

Karina Atwell

Preventive Medicine Resident

Bailey Murph

United Way of Greater Milwaukee

Evelyn Sharkey

Milwaukee Health Department

Hester Simons

WI Division of Public Health Office of Minority Health
Centro Hispano

Stephanie Kroll

Department of Health Services
Public Health Madison Dane County

2013-2015 Population Health Service Fellows and Placement Sites

Mallory Edgar

Diverse and Resilient and Men's Health Unit, Milwaukee Health Department

Tracy Flood

Milwaukee Health Department and Wisconsin Medical Society

Crysta Jarczynski

Office of Violence Prevention, Milwaukee Health Department

e.shor

WI Division of Public Health AIDS/HIV Program

Lauren Lamers

Menominee Tribal Clinic in Keshena and the Shawano Menominee County Health Department

Colleen Moran

WI Division of Public Health, Bureau of Environmental and Occupational Health; and Nutrition, Physical Activity and Obesity Prevention Program

2012-2014 Population Health Service Fellows and Placement Sites

Sarah Geiger

WI Division of Public Health Bureau of Environmental and Occupational Health and Milwaukee Health Department

Christina Hanna

WI Division of Public Health AIDS/HIV Program

Carly Hood

WI Division of Public Health, Chronic Disease Prevention and Cancer Control Program & Health First Wisconsin

Erica LeCounte

Milwaukee Health Department and the Center for Urban Population Health

Lindsay Menard

La Crosse County Health Department



Population Health Fellows and Preceptors, 2014

PHOTO: Marion Ceraso

Community Engagement

The UW's "Wisconsin Idea" envisions close working relationships throughout the State of Wisconsin, such that "the beneficent influence of the University reaches every family in the State." Institute staff members regularly engage with colleagues and partners in programs, applied research, program evaluation, committees, consulting, proposal development, and other activities. These partnerships, some funded, some in-kind, and some simply collegial, include entities in the public and private sectors as well as in other departments and centers throughout the University.

The list provides a selected view of the myriad organizations with which Institute staff collaborated and/or consulted in 2014.

Public/Governmental Agencies and Private and Voluntary Sector Agencies

Alliance Employer Health Care Cooperative and
Alliance Foundation

Aurora Health Care, Inc.

Centers for Disease Control and Prevention

Center for Health Systems Research and Analysis (UW)

Dane County Office of Equal Opportunity

Great Lakes Inter-Tribal Council

Institute for Clinical and Translational Research (UW)

Institute for Research on Poverty (UW)

Intertribal Council of Michigan

La Follette School of Public Affairs (UW)

Lifecourse Initiative for Healthy Families

Marshfield Clinic Research Foundation

Medical College of Wisconsin

Milwaukee County Department of Health and Human
Services, Division of Behavioral Health

Milwaukee Health Care Partnership

National Academy for State Health Policy

National Association of Counties

National Association of Drug Court Professionals

National Business Coalition on Health

National Council on State Courts

National Drug Court Institute

National Institute on Drug Abuse

Office of National Drug Control Policy

Pew Charitable Trust - Pew Center on the States



State Council on Alcohol and Other Drug Abuse

State Health Access and Data Assistance Center (SHADAC)

Substance Abuse and Mental Health Services Administration

The Robert Wood Johnson Foundation

United Way of Dane County United Way Worldwide

UW Medical Foundation

UW School of Nursing

Wisconsin Association of Drug Court Professionals

Wisconsin Center for Public Health Education and Training

Wisconsin Collaborative for Healthcare Quality

Wisconsin Department of Children and Families

Wisconsin Department of Corrections

Wisconsin Department of Employee Trust Funds

Wisconsin Department of Health Services

Wisconsin Department of Justice

Wisconsin Department of Public Instruction

Wisconsin Health Information Organization

Wisconsin Hospital Association

Wisconsin Legislative Audit Bureau

Wisconsin Legislative Council

Wisconsin Legislative Fiscal Bureau

Wisconsin Medical Society

Wisconsin Primary Health Care Association

Wisconsin Statewide Criminal Justice Coordinating Council

Wisconsin Statewide Health Information Network

Wisconsin Supreme Court

Evidence Based Practice

What Works For Health

www.whatworksforhealth.wisc.edu (Wisconsin) and
www.countyhealthrankings.org/roadmaps/what-works-for-health (National)

This online database provides review and assessment of available research to rate the effectiveness of a broad variety of strategies that can affect health through changes to:

- Health behaviors
- Clinical care
- Social and economic factors, and
- The physical environment

The underlying research is based on a model of population health that emphasizes the many factors that can make communities healthier places to live, learn, work, and play.

These tools systematically assess, summarize, and rate the evidence for policies and programs that can affect these factors. The goal: to provide public health professionals and community leaders with the information they need to make evidence-informed decisions about improving health in their communities and, where available, with tools to get started.

Analysts begin with a broad orientation search to define each policy or program and identify appropriate search terms. Targeted literature searches are conducted, focusing first on systematic reviews and peer reviewed articles. Searches focus next on selected sources of grey literature and the findings of relevant, reputable organizations that assess policy and program effectiveness. Analysts prepare high level summaries of each source's key findings and quality; summaries are reviewed independently by another team member. A final evidence rating is assigned based on an assessment of the available information.

This database continues to be a key resource in Wisconsin for many of the applicants to the Wisconsin Partnership Programs' Community-Academic Partnership grant program as well as others across the state and nation seeking to identify effective health improvement policies and programs.

Supported by the Wisconsin Partnership Program, UW School of Medicine and Public Health and the Robert Wood Johnson Foundation.

Evidence-Based Health Policy Project (EBHPP)

www.evidencebasedhealthpolicy.org

The EBHPP, a partnership with the La Follette School of Public Affairs and the Wisconsin Legislative Council, connects lawmakers and researchers, along with public and private sector decision leaders, to advance Wisconsin's health.

- Provides policy makers, in both the public and private sectors, with timely, nonpartisan, high-quality information for evidence-based decision making.
- Increases involvement of University of Wisconsin research and teaching activities in topical issues of state public policy.
- Draws on the leadership and talent of academic, government, and industry experts.
- Promotes the translation of research into practice and of practice into research.
- Designated as a core community engagement component of the University of Wisconsin School of Medicine and Public Health Institute for Clinical and Translational Research - Community Academic Partnership (ICTR-CAP).

Supported in part by the Wisconsin Partnership Program, UW School of Medicine and Public Health; the UW Chancellor's Office; and the UW Institute for Clinical & Translational Research.



Executive Committee

The Population Health Institute supports the mission of our integrated School of Medicine and Public Health to translate public health and health policy research for practice. We consider our work an embodiment of the Wisconsin Idea, working with the public and private sectors – government, business, advocates, and community members-- at the state and local level -- toward a healthier Wisconsin.

The Executive Committee provides guidance to the Director on the performance of the Institute, reviewing goals and objectives and evaluating accomplishments through this annual report.

Alexandra K. Adams, MD, PhD

Associate Professor, Department of Medicine
UW School of Medicine and Public Health

Ron Cisler, PhD, MS

Director, Center for Urban Population Health
Professor, Health Informatics & Administration,
College of Health Sciences, UW-Milwaukee
Affiliate Professor, Zilber School of Public Health,
UW-Milwaukee
Affiliate Professor, Population Health Sciences,
UW School of Medicine and Public Health, UW-Madison

Tim Corden, MD

Chief Medical Officer - Bureau of Community Health
Promotion, Division of Public Health,
Department of Health Services, State of Wisconsin
Adjunct Professor of Pediatrics, Medical College of
Wisconsin
Adjunct Associate Professor, Population Health,
UW School of Medicine and Public Health.

F. Javier Nieto, MD, MPH, PhD

Chair, UW Department of Population Health Sciences
Professor, Population Health Sciences and Family Medicine,
UW School of Medicine and Public Health

Tom Oliver, PhD, MHA

Professor, Population Health Sciences
Director, UW Master of Public Health Program,
UW School of Medicine and Public Health

Patrick Remington, MD, MPH

Associate Dean for Public Health
Professor, Population Health Sciences,
UW School of Medicine and Public Health

Gordon Ridley, MS

Consultant to Dean, UW School of Medicine
and Public Health

Maureen A. Smith, MD, MPH, PhD

Professor, Departments of Population Health Sciences,
Surgery, and Family Medicine
Director, Health Innovation Program
Director, Community-Academic Partnerships Core, and
Assistant Director for UW Institute for Clinical and
Translational Research
Associate Director for Population Sciences, UW Carbone
Cancer Center, UW School of Medicine and Public Health

Barbara (Bobbi) Wolfe, PhD

Richard A Easterlin Professor, Department of Economics,
La Follette School of Public Affairs and Department
of Population Health Sciences, University of
Wisconsin-Madison

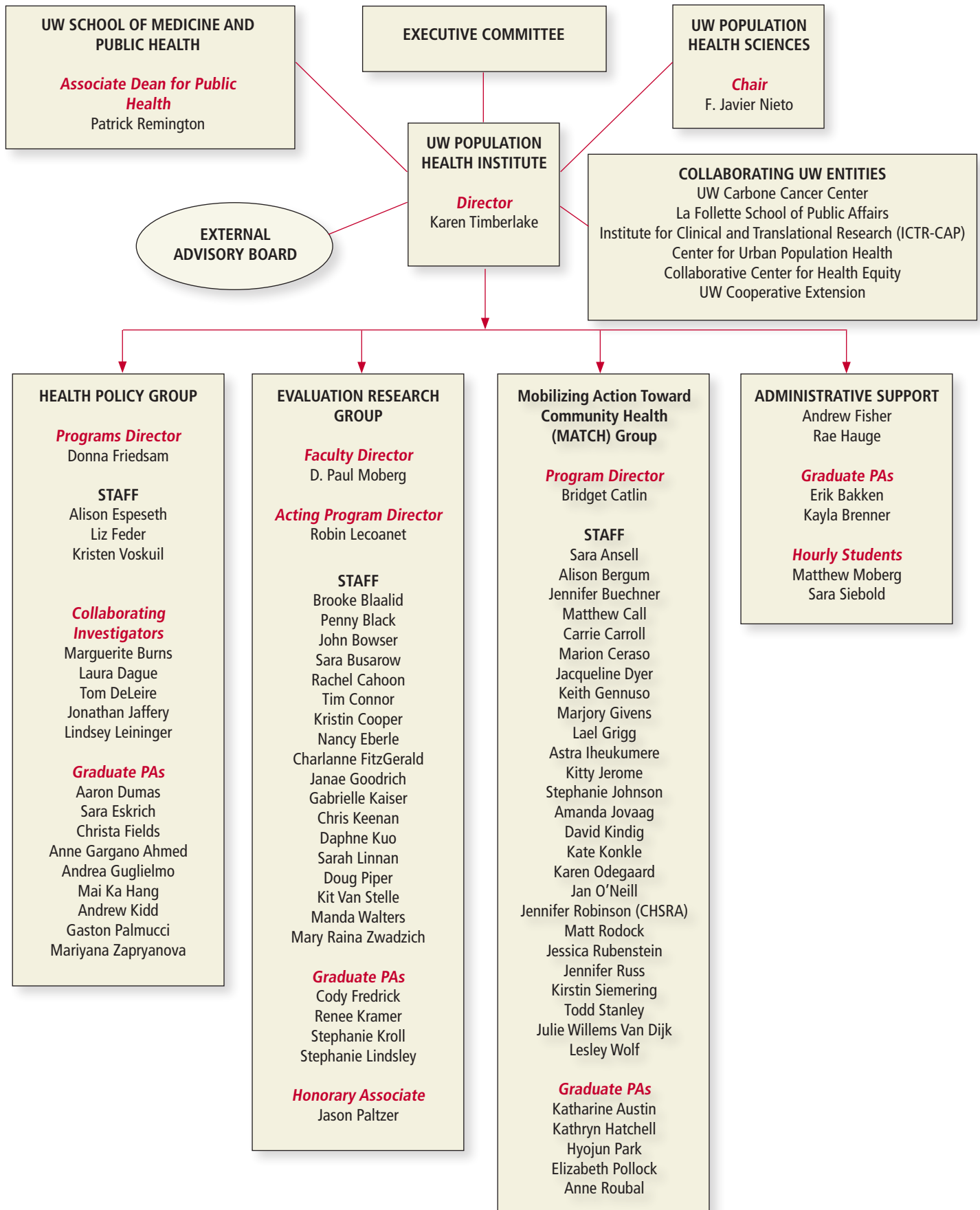
Susan Webb Yackee, PhD

Associate Professor of Political Science and Public Affairs
Director of the La Follette School of Public Affairs,
University of Wisconsin-Madison

Susan Zahner, DrPH, MPH

Vilas Distinguished Achievement Professor,
UW School of Nursing
Associate Dean for Academic Affairs,
UW School of Nursing

UW Population Health Institute Organizational Chart



Institute Staff in 2014

Sara Ansell, MSW, MSSP, Associate Researcher
 Alison Bergum, MPA, Associate Researcher
 Brooke Blaalid, MS, Outreach Specialist
 Penny Black, MS, Assistant Researcher
 John Bowser, PhD, Associate Researcher
 Jennifer Buechner, BS, Administrative Program Specialist
 Sara Busarow, MD, MPH, Associate Researcher
 Rachel Cahoon, MPH, Assistant Researcher
 Carrie Carroll, MPA, Researcher
 Bridget Catlin, PhD, MHSA,
 Senior Scientist Program Director, MATCH Group
 Marion Ceraso, MHS, MA, Researcher
 Tim Connor, MS, MA, Associate Researcher
 Kristin Cooper, MS, Assistant Researcher
 Jackie Dyer, University Services Associate II
 Nancy Eberle, MPH, Assistant Researcher
 Liz Feder, PhD, Associate Researcher
 Andrew Fisher, BA, University Services
 Program Associate
 Charlanne FitzGerald, MPH, Researcher
 Donna Friedsam, MPH, Researcher
 Programs Director, Health Policy Programs
 Keith Gennuso, PhD, Assistant Scientist
 Marjory Givens, PhD, MPH, Associate Scientist
 Janae Goodrich, BA, Research Specialist
 Lael Grigg, MPA, Assistant Researcher
 Rae Hauge, BA, Grants Manager
 Astra Iheukemere, MBA, MPA, Associate Researcher
 Kitty Jerome, MA, Researcher
 Amanda Jovaag, MS, Associate Researcher
 Gabrielle Kaiser, BS, Research Specialist
 Christopher Keenan, MA, Assistant Researcher
 David Kindig, MD, PhD, Senior Advisor
 Kate Konkle, MPH, Associate Researcher
 Daphne Kuo, PhD, Assistant Scientist
 Robin Lecoanet, JD, Researcher
 Sarah Linnan, BS, Research Specialist
 D. Paul Moberg, PhD
 Senior Scientist and Research Professor
 Faculty and Program Director, Evaluation Research

Karen Odegaard, MPH, Associate Researcher
 Jan O'Neill, MPA, Associate Researcher
 Doug Piper, PhD, Senior Scientist
 Patrick Remington, MD, MPH
 Associate Dean for Public Health
 Matt Rodock, MPH, Assistant Researcher
 Jennifer Rubenstein, MPA, Assistant Researcher
 Kirstin Siemering, DrPH, RD, Researcher
 Todd Stanley, University Services Associate
 Karen Timberlake, JD, Director,
 Associate Professor (CHS)
 Kit Van Stelle, MA, Researcher
 Kristen Voskuil, MA, Associate Researcher
 Manda Walters, MS, Outreach Specialist
 Julie Willems Van Dijk, PhD, RN
 Associate Scientist
 Lesley Wolf, University Services Associate II
 Mary Raina Zwadzich, MSW, Outreach Specialist

Institute Graduate Students in 2014

Katherine Austin	Andrew Kidd
Erik Bakken	Renee Kramer
Kayla Brenner	Stephanie Kroll
Aaron Dumas	Stephanie Lindsley
Sara Eskrich	Gaston Palmucci
Christa Fields	Jason Paltzer
Cody Fredrick	Hyojun Park
Anne Gargano Ahmed	Elizabeth Pollock
Andrea Guglielmo	Anne Roubal
Mai Ka Hang	Stephanie Veazie
Kathryn Hatchell	Mariyana Zapryanova

Conferences, Seminars, Publications, Programs

Institute-Sponsored Seminars

Retrofitting Suburbia: Urban Design for Public Health

Ellen Dunham-Jones, AIA, Professor of Architecture
Georgia Tech School of Architecture
February 3, 2014

Community Health Planning: The Milwaukee Health Care Partnership Model

Mark Huber, VP Social Responsibility, Aurora Health Care
March 3, 2014

Increasing Access to Healthy Food: Urban Agriculture and Health

Monica Marie White, PhD., Assistant Professor of
Environmental Justice, Nelson Institute for Environmental
Studies and Department of Community and
Environmental Sociology, UW-Madison
April 7, 2014

Building Diverse Leadership from the Community Up

Paul Schmitz, CEO, Public Allies
May 5, 2014

Population-Based Approaches to Improving Child Health

Veronica L. Gunn, MD, MPH, FAAP, Vice President of Population
Health Management and Payment Innovation and Medical
Director, Community Services, Children's Hospital of Wisconsin
October 6, 2014

Consequential Epidemiology: Findings from the Survey of the Health of Wisconsin

Kristen Malecki, PhD, MPH, Assistant Professor of Population
Health Sciences and Co-Director, Survey of the Health of
Wisconsin (SHOW)
November 3, 2014

Young Adults' Financial Capability and Well-Being: It's Not Just About Money - It's About Life

Soyeon Shim, PhD, Dean and Professor, School of Human
Ecology, University of Wisconsin-Madison
December 1, 2014



Capitol Briefings by the Evidence-Based Health Policy Project

Pharmaceutical Waste in Wisconsin's Water: Risks and Solutions

Thursday, March 13, 2014

Speakers:

Rebecca D. Klaper, Associate Professor, School of Freshwater Sciences, University of Wisconsin – Milwaukee

Henry Anderson, MD, Chief Medical Officer and State Environmental and Occupational Disease Epidemiologist

Kevin Shafer, Executive Director, Milwaukee Metropolitan Sewerage District

Barb Bickford, Medical Waste Coordinator, Wisconsin Department of Natural Resources

Co-facilitators:

Senator Robert Cowles, WI 2nd Senate District

Toni Herkert, Policy Analyst, Office of State Senator Robert Cowles

Telemedicine: A Prescription for the Future of Health Care?

Monday, December 8, 2014

Speakers:

Nina Antoniotti, Director of Telehealth, Marshfield Clinic System

William Appelgate, Executive Director, Iowa Chronic Care Consortium

Gary Capistrant, Senior Director, Public Policy, American Telehealth Association

Brian Collien, VP of Managed Care and Large Group Business, Unity Health Insurance

Jonathan Jagoda, Director of Federal Policy and Government Relations, Federation of State Medical Boards

Justin Sattin, MD, Medical Director, UW Comprehensive Stroke Program

Dave Stepien, Section Chief, Benefits Policy Section, Wisconsin Division of Health Care Access and Accountability

Facilitator:

Rep. Daniel Riemer, WI 7th Assembly District



PHOTO: Jeff Miller/UW-Madison University Communications

Publications

Different Parts Of The Same Elephant: Medicaid Research And State Expansion Decisions.

Friedsam D. Health Affairs Blog. September 19, 2014.

The Effects of Expanding Public Insurance to Rural Low-Income Childless Adults.

Burns ME, Dague L, DeLeire T, Dorsch M, Friedsam D, Leininger LJ, Palmucci G, Schmelzer J, Voskuil K. Health Services Research. 2014;49(6), Part II; 2172-2187.

Major Topics for Cross-Cutting Research: Effects of Medicaid Policy Variation.

Friedsam D. The Brookings Institution, Conference on Evolving a Research Strategy for the Affordable Care Act. Washington DC. October 23, 2014.

“Predicting High-Need Cases among New Medicaid Enrollees.”

Leininger L, Friedsam D, Voskuil K, DeLeire T. 2014. Am J Manag Care. 20(9):e399-e407.

State-Level Field Network Study of the Implementation of the Affordable Care Act: Wisconsin.

Friedsam D, Kaplan T, Eskrich S. Rockefeller Institute of Government and the Brookings Institution. August 2014.

“What Fraction of Medicaid Enrollees Have Private Insurance at Time of Enrollment?”

Dague L, DeLeire T, Friedsam D, Leininger L, Meier S, Voskuil K. Estimates from Administrative Data. Inquiry 51.

Reports

Adams County Community Wellness Program Evaluation Report

Prepared By: Lecoanet, R, June 2014.

County Health Rankings 2014 Key Findings Report

Prepared by Catlin BB, Jovaag AR, Remington PL, Willems van Dijk J., March 2014.

Disproportionate Minority Contact Evaluation Report

Prepared By: Lecoanet, R, Kuo, D, Lindsley, S, Siebold, S, September 2014.

Evaluation of Wisconsin’s BadgerCare Plus Health Coverage for Parents & Caretaker Adults and for Childless Adults, 2012 Waiver Provisions

Friedsam, DA, DeLeire T, Dague L, Leininger L, Burns, ME, Voskuil, KR. Technical and Scientific Report and Executive Summary, December 2014.

Treatment Alternatives and Diversion (TAD) Participant Outcome Evaluation and Cost-Benefit Report (2007-2013)

Prepared By: Van Stelle, K, Goodrich, J, Kroll, S, July 2014.

Wisconsin Health Trends: 2014 Progress Report

Prepared By: Roubal AM, Hatchell K, Catlin BB, Timberlake K December 2014.

Wisconsin Statewide Health Information Network (WISHIN) Final Evaluation Report

Prepared by Timberlake, K, Moberg, DP, Lecoanet, R, Kuo, D, Linnan, S, Lindsley, S, March 2014.



Selected Abstracts and Presentations

County Health Rankings and Kentucky's Signs of Progress

Kitty Jerome
Frankfort, KY
April 2014.

County Health Rankings: From Data to Action

Bridget Catlin
Association of Public Data Users, Rosslyn, VA
September 2014.

County Health Rankings & Roadmaps

Kate Konkle
Nebraska Health Policy Academy Webinar
May 2014.

County Health Rankings & Roadmaps; What's It All About?

Jan O'Neill
Bullitt County Community Dialog, KY
May 2014.

Disproportionate Minority Contact Evaluation Findings.

Presentation to the Governor's Juvenile Justice Commission,
Lecoanet, R, Kuo, D. Lindsley, S, Siebold, S, Beloit, WI,
September 2014.

The Effect of Medicaid Restrictive Re-Enrollment Periods on Health Care Use and Costs.

Voskuil, KR, et al. APPAM. Albuquerque, NM.
November 7, 2014.

The effects of a public health insurance expansion on behavioral health care use.

Burns M, Leininger L, Dague L, DeLeire T, Voskuil K, Reynolds C,
Friedsam D. Academy Health Annual Research Meeting.
San Diego, CA. June 9, 2014.

The Effects of Expanding Public Insurance on the Use of Preventive Care.

DeLeire T, Burns M, Dague L, et al. APPAM. Albuquerque, NM.
November 7, 2014.

Evaluating a Novel Medicaid Medical Home Intervention for High-Risk Pregnant Women.

Leininger L, Voskuil KR, Friedsam D. APPAM. Albuquerque, NM.
November 7, 2014.

Expanding Public Insurance to Rural Wisconsin Low-Income Childless Adults Increases the Use of Medical Care.

DeLeire T, Burns M, Dague L. American Society of Health Economists Biennial Meeting, Los Angeles, CA. June 23, 2014.

Health-Related Quality of Life and the County Health Rankings

Pat Remington
Healthy People 2020 Webinar
September 2014.

Honoring Our Children 2013 Data Report

FitzGerald, CJ, Cooper, KG, Honoring Our Children Project
Advisory Committee Meeting, Lac du Flambeau, WI. July 2014.

How Do Medicaid Premiums Affect Take-up and Retention? Evidence From Wisconsin.

Dague L, DeLeire T, Leininger L, Burns M, Voskuil K, Palmucci G,
Zapranova M, Friedsam D., Academy Health Annual Research
Meeting. San Diego, CA. June 9, 2014.

Major Topics for Cross-Cutting Research: Effects of Medicaid Policy Variation.

Friedsam D. The Brookings Institution, Conference on Evolving a
Research Strategy for the Affordable Care Act. Washington DC.
October 23, 2014.

Public Health and Planning Working Together

Karen Odegaard
American Planning Association – WI Chapter
June 2014.

Roadmaps to Health Action Center Training

Stephanie Johnson
Chickasaw County, IA
September 2014.

Special Committee on Problem-Solving Courts, Alternatives, and Diversion

Testimony before the Wisconsin Legislative Council Treatment
Alternatives and Diversion (TAD) Program, Kit Van Stelle, State
Capitol, Madison, WI, July 2014.

What Every Leader Needs to Know about Population Health

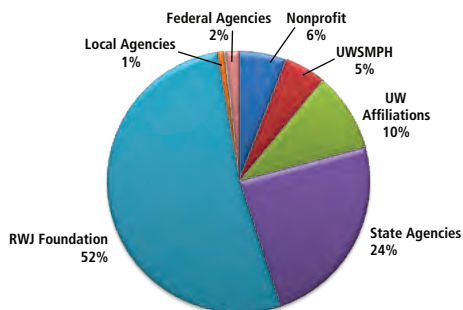
Julie Willems Van Dijk
Presbyterian Health Systems
April 2014.

eNEWS – Published Monthly

Available at <http://uwphi.pophealth.wisc.edu/publications/issue-briefs/index.htm>

Budget

The Institute's total budget for 2014 was approximately \$7.8 million. This funding comes from a diverse mix of sources, including the Robert Wood Johnson Foundation, the Wisconsin Partnership Program, Wisconsin state agencies, local and tribal agencies, federal agencies, UW School of Medicine and Public Health, and several foundation and other non-profit sources. Federal funds flow to the Institute via several of these resources. The following graph summarizes each funding source as a percent of the Institute's total budget. Representative projects in each category are listed, following the graph:



National, State, Tribal & Community Organizations

Great Lakes Inter-Tribal Council, Inc.

- Honoring Our Children
- Family Foundations Home Visiting Program

Lac Courte Oreilles Band of Lake Superior Chippewa Indians

- Mino Maajisewin Program

Wisconsin Statewide Health Information Network

Local Agencies

Ashland County Health & Human Services

- Adult Drug Treatment Court

Fond du Lac County Department of Community Programs

- Adult Drug Treatment Court

Dane County

- Racial Injustice Improvement Project

State Agencies

South Dakota Department of Social Services

- Strategic Prevention Framework State Incentive Grant

WI Department of Corrections, Department of Health Services and Office of Justice Assistance

- Evaluation for the Treatment & Diversion Programs

WI Department of Health Services (DHS)

- Chronic Disease Program Integration and Coordinated Chronic Disease Prevention and Health Promotion
- Wisconsin Diabetes Quality Improvement Collaborative
- Evaluation of BadgerCare Plus and Medicaid Medical Homes
- Mental Health Program Evaluation
- National Public Health Improvement Program
- Strategic Prevention Framework Partnership for Success II
- Fit Families – Supplemental Nutrition Assistance Program Education

WI Department of Public Instruction

- Safe and Supportive Schools

Federal Agencies

National Institutes of Health

- Recovery Schools as Continuing Care

Robert Wood Johnson Foundation (RWJF)

- County Health Rankings
- Roadmaps to Health
- State Health Access Reform Evaluation - BadgerCare Research

UW School of Medicine & Public Health (UWSMPH)

- UWPHI Core Funding

UW Affiliated-Foundations & Programs

UW Partnership Program

- Building the Infrastructure to Make Wisconsin the Healthiest State: Strengthening and Integrating Community Health Improvement Processes and Plans
- Evidence-based Health Policy Project
- Evaluation of the Lifecourse Initiative for Healthy Families (LIHF)
- Healthy Wisconsin Leadership Institute
- Making Wisconsin the Healthiest State
- Wisconsin Population Health Service Fellowship Program
- Adams County Community Wellness Program
- Increasing Cultural Congruence among Nurses in Wisconsin

UW Institute for Clinical Translational Research

- Disparities in Wisconsin's Diabetes Outcome
- ICTR Program Evaluation



**University of Wisconsin
Population Health Institute**
SCHOOL OF MEDICINE AND PUBLIC HEALTH

Department of Population Health Sciences
University of Wisconsin School of Medicine and Public Health
575 WARF Building
610 Walnut Street Madison, WI 53726-2336

Phone: (608) 263-6294 Fax: (608) 262-6404

Email: UWPHI@med.wisc.edu | Web: uwphi.pophealth.wisc.edu | Twitter: [@UWiscPHI](https://twitter.com/UWiscPHI)