



Translating Research for Policy and Practice

Annual Report 2012



School of Medicine
and Public Health

UNIVERSITY OF WISCONSIN-MADISON

Contents

- 1 Letter from Dean Robert Golden
- 2 Letter from Director Karen Timberlake
- 3 Mission Statement
- 4 Community Advisory Board
- 5 Affiliated Faculty and Investigators
- 6 Institute Programs and Cross-Cutting Themes
- 7 Health Policy
- 8 Program Evaluation
- 9 Mobilizing Action Toward Community Health (MATCH)
- 10 Service Learning
- 11 Wisconsin Population Health Service Fellowship
- 12 Community Engagement
- 14 Evidence Based Practice
- 15 Executive Committee and Institute Staff
- 16 Institute Staff in 2012
- 17 Conferences, Seminars, Publications, Programs
- 18 Capitol Briefings by the Evidence-Based Health Policy Project
- 19 Publications
- 19 Reports
- 20 Selected Abstracts and Presentations
- 22 Budget



Dean Robert Golden

At the University of Wisconsin School of Medicine and Public Health, our vision is to “build a new and better infrastructure for the promotion of health and the prevention, diagnosis, and treatment of disease for the people of Wisconsin, which will then serve the nation as the leading model of improving the health of the public.” The School strives to improve health and reduce disparities through partnerships in research, education, and service.

The Population Health Institute stands as a leading example within the School of Medicine and Public Health of what it means to partner, across diverse sectors of society, to improve the health of the state and the nation. From its earliest days, beginning with the Center for Health Policy and Program Evaluation established by Dr. David Kindig in 1984, the Institute’s mission and work have embodied the Wisconsin Idea – where the boundaries of the University extend to the boundaries of the state, and beyond. The Institute’s tag line, “translating research for policy and practice,” represents our heartfelt commitment to promote meaningful change through our partnerships and relationships with communities and our state. Research results from our academic program are communicated to practitioners – our intended audience. At the same time, the experience, expertise, and the needs of public health, policy making, and clinical practitioners inform our research programs.

As an integrated School of Medicine and Public Health, we understand that how long and how well people live is determined by much more than the medical care they receive. The Institute’s contributions to community engagement, research, and teaching are the building blocks for our School’s effort to achieve the full potential of this important transformation.

Robert N. Golden, MD



Karen Timberlake, Director

Thank you for your interest in the work of the UW Population Health Institute. Whether you know us for the County Health Rankings and Roadmaps, the Evidence-Based Health Policy Project, issue briefs, or evaluation of innovative programs to improve health, we consider you a partner in our mission of advancing health and well-being for all by promoting evidence-based approaches to policy and practice at the local, state, and national levels. The Institute works across the many determinants of health, and with partners from all sectors of society, to advance health in our local communities, the state of Wisconsin, and across the country.

Although our work is diverse, our efforts are united by core values that guide both what we do and how we do it. Those values are:

- * Have an **impact** on problems that matter
- * Support **action** based on research and data
- * **Leverage the assets** of the University of Wisconsin in service to the greater community
- * **Collaborate** with diverse partners, respecting and drawing upon the strengths and assets of each partner
- * **Creatively** seek out innovative and pragmatic solutions
- * **Exchange knowledge** through practice-informed research, learning from practice expertise in the public and private sectors.
- * Uphold a commitment to **excellence** and continuous quality improvement

Realizing the goal of longer, healthier lives for all will continue to require innovative partnerships, creative solutions, and a willingness to ask the hard questions and hear the answers. The UW Population Health Institute appreciates the opportunity to participate with you in this worthy and rewarding work.

A handwritten signature in black ink that reads "Karen Timberlake".

Mission Statement

The Institute produces and translates research for policy and practice to improve health and well-being for all, connecting the research and practice communities across the full spectrum of factors that contribute to health. Signature products include reports and interactive tools for exploring community health data and improvement strategies, issue briefs, program evaluations, and periodic briefings and conferences. The Institute's work is guided by an active Advisory Board of state-level policy makers and leaders, and an Executive Committee of university faculty.

The Institute serves as a focal point for public health and health care policy within the University of Wisconsin-Madison, bringing together faculty, staff, and students to address significant questions of what it takes to improve health across the population.

Mission: The UW Population Health Institute advances health and well-being for all by developing and promoting evidence-based approaches to policy and practice at the local, state, and national levels.



Our Goals:

- ◆ *Address* a broad range of real-world, health-related problems of topical importance to government, business, health care providers, purchasers and payers, public health, and the general public
- ◆ *Promote* partnerships between researchers and users of research and encourage collaboration between the academic community and public and private sector policy makers, across disciplines, and across the full spectrum of health determinants
- ◆ *Support* efforts to improve health across sectors with easy access to useful data, action strategies, and evaluation services
- ◆ *Build* the knowledge base of successful efforts to advance health and well-being
- ◆ *Provide* outreach and continuing education for practitioners and opportunities for applied learning for MPH, medical, graduate, and other students
- ◆ *Contribute* to policy decisions and program implementations that improve the health and well-being of all people in Wisconsin

Our Values:

- Impact:** Have an impact on problems that matter
- Action:** Support action based on research and data
- Influence:** Leverage the assets of the University in service to the greater community
- Collaboration:** Work in diverse partnerships, respecting and drawing upon the strengths and assets that partners bring
- Creativity:** Seek out innovative and pragmatic solutions
- Curiosity:** Foster knowledge exchange across sectors
- Excellence:** Uphold a commitment to excellence and continuous quality improvement

Community Advisory Board

The Institute is guided by a 14-member Community Advisory Board, with members from the health care, public health, business, and education sectors, as well as leaders from Wisconsin's legislature. The Board meets two to three times per year to guide the work of the Institute and provide feedback on its programs and publications.

Advisory Board Members in 2012

Bevan Baker

*Milwaukee Health Commissioner
City of Milwaukee Health Dept.*

Tim Bartholow

*Chief Medical Officer
Wisconsin Medical Society*

Steve Brenton

*President
Wisconsin Hospital Association*

Cheryl DeMars

*President and CEO
The Alliance*

Kurt Eggebrecht

*Health Officer
Appleton City Health Dept.*

Curt Gielow

*Executive Dean
School of Pharmacy
Concordia University-Wisconsin*

Gregory Nycz

*Director of Family Health Center
of Marshfield Inc.*

Representative Sandy Pasch

Wisconsin State Assembly

Christopher Queram

*President/CEO
WI Collaborative for Healthcare
Quality*

Peggy Rosenzweig

*Former Regent and Legislator
UW System Board of Regents*

Ayaz Samadani

*Family Physician
Dean/St Mary Regional Clinic*

Greg Simmons

*President and CEO
MetaStar, Inc.*

Tim Size

*Executive Director
Rural Wisconsin Health Coop*

Dick Tillmar

*Owner
Tillmar Connect, LLC*



Today's health care system is under tremendous pressure to change, to reduce costs, to improve quality, and to raise the value bar. Tomorrow's health care system will feature more transparency and accountability. More patient attribution to delivery systems will allow for a much stronger population health orientation. In this evolving health care system, the Population Health Institute's research output will grow in importance, positioning the Institute to be a full and valued partner in our future health care system. I am very pleased to be associated with such a dedicated group of researchers whose targeted labors are producing relevant knowledge and tools that will be needed by those entities in our health care system, who will accept the responsibility and measure their performance by their ability to improve population health, avoid preventable health care costs, and efficiently and effectively deliver needed services.

*Greg Nycz, Executive Director
Family Health Center of Marshfield, Inc.*

Affiliated Faculty and Investigators



Aaron Carrel, MD
Department of Pediatrics



Tom Oliver, PhD, MHA
Professor, Population Health Sciences
Director, Master of Public Health Program



Thomas DeLeire, PhD
Director, UW La Follette School of Public Affairs
Professor, Public Affairs and Population Health Sciences



Patrick Remington, MD, MPH
Associate Dean for Public Health,
School of Medicine and Public Health
Professor, Population Health Sciences



Jonathan Jaffery, MD
Associate Professor, School of Medicine and
Public Health
Medical Director, Delivery System Innovation,
UW Medical Foundation



Karen Timberlake, JD
Associate Professor (CHS), Population Health
Institute
Director, Population Health Institute



David Kindig, MD, PhD
Emeritus Professor, Population Health Sciences
Emeritus Vice-Chancellor, Health Sciences



David Vanness, PhD
Assistant Professor, Population Health
Sciences
Affiliate, Center for Demography and Ecology



Lindsey Leininger, PhD, MA
Currently an Assistant Professor, University of
Illinois-Chicago
Formerly a Researcher, Chapin Hall at the
University of Chicago



David L. Weimer, PhD
Edwin E. Witte Professor of Political Economy
UW La Follette School of Public Affairs



D. Paul Moberg, PhD
Research Professor, School of Medicine and
Public Health
Director for Evaluation, Institute for Clinical
Translational Research
Senior Scientist, Population Health Sciences



Barbara Wolfe, PhD
Professor, Economics
Professor, Population Health Sciences
Professor, UW La Follette School of Public
Affairs

Institute Programs and Cross-Cutting Themes

The Institute is led by nationally recognized leaders in applied public health and health policy research. Our progress during 2012 could not have been achieved without the ongoing contributions from members of our Community Advisory Board and support from the University of Wisconsin School of Medicine and Public Health and the Wisconsin Partnership Program.

The Programs of the Institute

Mobilizing Action Toward Community Health

(MATCH): Monitors and assesses population health, engages communities across the nation in community health improvement, and connects the Institute to the public health and health care sectors in the state through seminars, conferences, training programs, and an active website.

Health Policy: Engages in research, consulting, and analysis in partnership with Wisconsin's leading public and private sector policymakers in health and health care, focusing especially on cost, financing, coverage, access, and health system performance.

Program Evaluation: Conducts evaluation of a diverse range of public health and human service programming, including substance abuse prevention and treatment, maternal and child health, school health promotion, corrections, and chronic disease.



Cross-Cutting Themes

Service Learning: Serves as a population health 'laboratory' for professional development, where graduate students and fellows apply their skills to real-world issues and settings.

Community Engagement: Fosters strong partnerships between the University of Wisconsin and population health practitioners and policymakers.

Evidence-Based Practice: Produces, evaluates, and disseminates research to support "what works" in policy and practice.



Health Policy



Donna Friedsam
 Researcher and
 Health Policy Programs Director

Description: The Institute's health policy programs connect the University of Wisconsin School of Medicine and Public Health to Wisconsin's leading public and private sector policymakers in the health care and public health arenas with particular focus on cost, financing, access, coverage and on health system performance. The group conducts primary research and communicates new and existing evidence and analyses through issue briefs, consultancies, briefings, forums, symposia, and collaborative research.

Primary Partners: Legislators and executive leaders, legislative and administrative agency staff, and health care provider, purchaser, payer, and business groups.

Highlights from 2012

Cost, Coverage & Access

- Continued a multi-faceted evaluation of the BadgerCare Plus Core Plan for adults without dependent children (childless adults), in partnership with the Wisconsin Department of Health Services and with support from the Robert Wood Johnson Foundation.
- Completed final reports on health care utilization, costs, and labor market impact of coverage for childless adults. Briefed state agency and private sector leaders and presented findings at national meetings.

Evidence-Based Health Policy Project

- Delivered capitol briefings focusing on private sector innovations in health care financing and delivery, on the Accountable Care Organization model, on drunk driving, and on long-term care.

- Initiated development of public health class on use of evidence in policy making, and contributed to the University of Wisconsin School of Medicine and Public Health integrated cases for training of medical students, training them in health policy and interaction with elected officials.
- Advised the National Academy for State Health Policy in its roll-out of its State Reform website.

Health System Performance

- Launched an evaluation of Medicaid's Medical Homes for high risk pregnant women in Southeastern Wisconsin, assessing the changes made by clinics and HMOs, their impact on care delivery and birth outcomes.
- Continued exploratory study of the potential uses of emerging data, Medicaid, Medicare, and commercial insurance rates for quality of care process measures across Wisconsin counties and health service areas.
- Served on several government and industry committees including Wisconsin Collaborative for Health Care Quality (WCHQ) Aligning Forces for Quality initiative, the Wisconsin Health Information Organization data users group, and Primary Care Workforce Summit Planning Group.

Teaching Applied Health Policy

- Mentored two La Follette and two MPH graduate students as project assistants, and two economics doctoral students.
- Delivered a summer course on Wisconsin health systems and financing, and lectured throughout campus courses, particularly focusing on the federal Patient Protection and Affordable Care Act.

Health Impact Assessment

- Collaborated with Wisconsin Department of Health Services to transition and sustain Wisconsin's Health Impact Assessment capacity.
- Attained support from National Network of Public Health Institutes to initiate Health Impact Assessment (HIA) pilots and processes.

Program Evaluation



Paul Moberg
Research Professor,
Program and Faculty Director

Description: The Program Evaluation group conducts assessments of state and local programs in public health and human services. The group also maintains directly-funded evaluation research projects, using experimental and quasi-experimental designs to conduct rigorous evaluation of program innovations.

Primary Partners: Community, tribal, and state governmental agencies; collaboration with national researchers, practitioners, and faculty and staff within the University of Wisconsin.

The Program Evaluation group was involved in 27 actively-funded projects during 2012; Evaluations include a diverse range of program concerns: substance abuse, health promotion, mental health, nutrition, maternal and child health, physical activity and fitness, school health, corrections, and chronic disease.

Major Evaluation Projects:

- Strategic Prevention Framework State Incentive Grant (SPF SIG) in Wisconsin and South Dakota and Wisconsin's Screening, Brief Intervention, and Referral to Treatment (SBIRT) program – funded by the U.S. Substance Abuse and Mental Health Services Administration (SAMHSA).
- Recovery Schools for high school students with substance use disorder – funded by the National Institute on Drug Abuse.
- Wisconsin Statewide Health Information Network (WISHIN) designed to enable the exchange of electronic structured laboratory results, electronic prescriptions, and patient summary of care records. Evaluation will also assess WISHIN's impact on the quality and safety of patient care.
- Correctional health programs providing Treatment Alternatives and Diversion (TAD) for offenders with substance abuse problems. Conducted under contract with the Wisconsin Department of Corrections, in collaboration with the Office of Justice Assistance and the Department of Health Services.
- Health Disparities: Several projects focus on Native American health, in partnership with the Great Lakes Inter-Tribal Council, and on African American and Latino health, in partnership with the Wisconsin Division of Public Health, the Department of Public Instruction and the Wisconsin Partnership Program.

Examples of the Services Provided:

- Designing and implementing comprehensive program evaluations.
- Developing a wide range of evaluation designs and needs assessments.
- Developing data collection methods and survey instruments.
- Monitoring program services (e.g., measuring progress in reaching program objectives).
- Conducting qualitative research, including content analysis, intensive interviews, focus groups and site visits, and statistical analysis of data from surveys and program-specific data sets.

Mobilizing Action Toward Community Health (MATCH)



Bridget Booske Catlin
Senior Scientist and Program Director

Description: The Mobilizing Action Toward Community Health (MATCH) group monitors health and health disparities in communities; reviews evidence on policies and programs to inform policy making, program planning, implementation, and evaluation; disseminates information in user friendly formats to motivate action toward community health improvement; and engages with communities in their efforts to improve community health.

MATCH provides opportunities for population health graduate and MPH students to engage in the analysis, interpretation, and communication of health data and offers seminars, conferences, and applied training and continuing education programs. Our work centers on providing tools and guidance for communities taking action to improve health.

Primary Partners

Diverse organizations and individuals at the national, state, and local levels from non-profit, academic, governmental, business, and local public health sectors working to improve the health of the state of Wisconsin and across the nation.

Major Projects

- *County Health Rankings & Roadmaps*
- Making Wisconsin the Healthiest State
- Healthy Wisconsin Leadership Institute
- Population Health Service Fellowship Program
- First Monday Seminar Series
- Community Health Assessment and Planning

County Health Rankings & Roadmaps

The *County Health Rankings & Roadmaps* program, funded by the Robert Wood Johnson Foundation (RWJF), includes the *County Health Rankings*, launched for the third time in April 2012, and the *County Health Roadmaps* project that began in April 2011. Ranking the health of nearly every county in the nation, the *County Health Rankings* illustrate what we know when it comes to what's making people sick or healthy. The *County Health Roadmaps* show what we can do to create healthier places to live, learn, work, and play.

The *Roadmaps* project mobilizes local communities, national partners, and leaders across all sectors to improve health. The project includes several elements: grants to local coalitions and partnerships among policymakers, business, education, public health, health care, and community organizations; grants to national organizations working to improve health; recognition of communities whose promising efforts have led to better health; and customized technical assistance on strategies to improve health. New in 2012 were the national launches of the *RWJF Roadmaps to Health Prize*, a competition for communities across the nation to identify the most impressive efforts to improve the health of their citizens, and *What Works for Health*, a searchable database of policies and programs and evidence of their effectiveness.

Making Wisconsin the Healthiest State

With renewed funding from the Wisconsin Partnership Program, University of Wisconsin School of Medicine and Public Health, this project has three main goals:

- Measure, assess, and report on Wisconsin's health and health disparities
- Support local efforts in health improvement (including the Wisconsin version of *What Works for Health*)

Support statewide impact on policy, systems, and environmental changes for Health

Service Learning

Description: Each of the Institute's programs provides students and fellows the opportunity to "learn while doing." This focus on service learning adds to coursework that students take. Students working with the Institute are enrolled in the Population Health MS/PhD program, Master of Public Health (MPH) program, the La Follette School of Public Affairs, the Department of Economics, and elsewhere. The Institute serves as a population health 'laboratory' for learning, where students apply their skills to real-world issues and settings. Students also have an opportunity to publish results as issue briefs, in the *Wisconsin Medical Journal* and other publications.

Primary Partners: State and local health and health care leaders who provide service learning opportunities for students working in the Institute, or for fellows in the Wisconsin Population Health Service Fellowship.

Healthy Wisconsin Leadership Institute

www.hwli.org

The Healthy Wisconsin Leadership Institute (HWLI) is a continuing education and training resource to provide public and community health education and leadership development throughout Wisconsin. HWLI is supported jointly by the *University of Wisconsin, School of Medicine and Public Health and the Medical College of Wisconsin*. HWLI holds regional workshops and also administers the year-long Community Teams Program.

The Community Teams program focuses on building public health and collaborative leadership skills for teams as they work to address health priorities in their communities. A cohort of seven community teams graduated from the program in June 2012. The seventh cohort (2012-2013) includes six teams representing community health initiatives:

2012-2013 Community Teams

The Burnett County Poverty Task Force: reducing poverty as a health improvement strategy in Burnett County

Jefferson County and Fort Health Care: addressing adult obesity in Jefferson County

Jackson County's AACTION (Alcohol Awareness Community Team Influencing our Neighbors): reducing underage drinking in Jackson County

Northwoods LEAN (Linking Education, Activity, and Nutrition): increasing physical activity and improving nutrition to reduce and manage chronic disease in Oneida and Vilas Counties

Statewide Active Communities Team: multiple communities across Wisconsin working together to create infrastructure improvements that encourage increased physical activity

Youth Suicide Prevention Task Force: communities of Wittenberg, Birnamwood, and the Ho-Chunk tribe addressing mental health needs and preventing youth suicide

Wisconsin Population Health Service Fellowship

<http://uwphi.pophealth.wisc.edu/programs/match/fellowship/index.htm>

The Fellowship program serves to develop the next generation of public health leaders skilled in planning, implementation, and evaluation of public health programs.

This two-year Fellowship program provides recent masters level graduates with service and training opportunities in community based, non-profit, governmental, and health service organizations.

2012-2014 Population Health Service Fellows and Placement Sites

Sarah Geiger

WI Division of Public Health Bureau of Environmental and Occupational Health and Milwaukee Health Department

Christina Hanna

WI Division of Public Health AIDS/HIV Program

Carly Hood

WI Division of Public Health, Chronic Disease Prevention and Cancer Control Program & Health First Wisconsin

Erica LeCounte

Milwaukee Health Department and the Center for Urban Population Health

Lindsay Menard

La Crosse County Health Department



2011-2013 Population Health Service Fellows and Placement Sites

Kristen Audet

WI Division of Public Health, Public Health Preparedness and Rural WI Health Cooperative

Akbar Husain

WI Division of Public Health Western Regional Office

Emma Hynes

WI Division of Public Health Maternal and Child Health Unit and Wisconsin Alliance for Women's Health

Rashonda Jones

Milwaukee Health Department and United Way of Greater Milwaukee

Anneke Mohr

WI Division of Public Health AIDS/HIV Program and Great Lakes Inter-Tribal Epidemiology Center

Tyler Weber

Milwaukee Health Department & Lindsay Heights Neighborhood Health Alliance

2010-2012 Population Health Service Fellows and Placement Sites

Katarina Grande

City of Milwaukee Health Department and the Center for Urban Population Health

Paula Tran Inzeo

Madison at the Division of Public Health with the Division Deputy Administrator and in the Bureau of Environmental and Occupational Health with the Bureau Director

Kelli Truszynski

City of Milwaukee Health Department and the WI Division of Public Health – Southern Regional Office in Madison

Katherine Vaughn-Jehring

Division of Public Health, Office of Policy and Practice, and Allied Wellness Center in Madison

DHS Preceptor Jim Vergeront and Wisconsin Population Health Service Fellows Paula Tran Inzeo, Emma Hynes, Tyler Weber, Anneke Mohr, Rashonda Jones and Katherine Vaughn Jehring pack food for distribution during Fellowship day of service.

Community Engagement

The UW's "Wisconsin Idea" envisions close working relationships throughout the state of Wisconsin, such that "the beneficent influence of the University reaches every family in the State." Institute staff members regularly engage with colleagues and partners in programs, applied research, program evaluation, committees, consulting, proposal development, and other activities. These partnerships, some funded, some in-kind, and some simply collegial, include entities in the public and private sectors as well as in other departments and centers throughout the University.

The list provides a selected view of the myriad organizations with which Institute staff collaborated and/or consulted in 2012.

Public/Governmental Agencies and Private and Voluntary Sector Agencies

Alliance Employer Health Care Cooperative and Alliance Foundation

Aurora Health Care, Inc.

Centers for Disease Control and Prevention

Center for Health Systems Research and Analysis (UW)

Great Lakes Inter-Tribal Council

Institute for Clinical and Translational Research (UW)

Institute for Research on Poverty (UW)

Intertribal Council of Michigan

La Follette School of Public Affairs (UW)

Lifecourse Initiative for Healthy Families

Medical College of Wisconsin

Milwaukee Health Care Partnership

National Academy for State Health Policy

National Association of Drug Court Professionals

National Council on State Courts

National Drug Court Institute

National Institute on Drug Abuse

Office of National Drug Control Policy

Pew Charitable Trust - Pew Center on the States

State Council on Alcohol and Other Drug Abuse

State Health Access and Data Assistance Center (SHADAC)

Strategic Prevention Framework – State Incentive Grant

Substance Abuse and Mental Health Services Administration

The Robert Wood Johnson Foundation

United Way of Dane County

UW Medical Foundation

UW School of Nursing

Wisconsin Association of Drug Court Professionals

Wisconsin Center for Public Health Education and Training

Wisconsin Collaborative for Healthcare Quality

Wisconsin Department of Children and Families

Wisconsin Department of Corrections

Wisconsin Department of Employee Trust Funds

Wisconsin Department of Health Services

Wisconsin Department of Public Instruction

Wisconsin Health Information Organization

Wisconsin Hospital Association

Wisconsin Initiative to Promote Healthy Lifestyles

Wisconsin Legislative Audit Bureau

Wisconsin Legislative Council

Wisconsin Legislative Fiscal Bureau

Wisconsin Medical Society

Wisconsin Office of Justice Assistance

Wisconsin Office of the Public Defender

Wisconsin Primary Health Care Association

Wisconsin Statewide Criminal Justice Coordinating Council

Wisconsin Statewide Health Information Network

Wisconsin Supreme Court

Evidence Based Practice

What Works For Health

www.whatworksforhealth.wisc.edu (Wisconsin) and www.countyhealthrankings.org/what-works-for-health (National)

This online database provides review and assessment of available research to rate the effectiveness of a broad variety of strategies that can affect health through changes to:

- health behaviors
- clinical care
- social and economic factors, and
- the physical environment

The underlying research is based on a model of population health that emphasizes the many factors that can make communities healthier places to live, learn, work, and play.

These tools systematically assess, summarize, and rate the evidence for policies and programs that can affect these factors. The goal: to provide public health professionals and community leaders with the information they need to make evidence-informed decisions about improving health in their communities and, where available, with tools to get started.

Analysts begin with a broad orientation search to define each policy or program and identify appropriate search terms. Targeted literature searches are conducted, focusing first on systematic reviews and peer reviewed articles. Searches focus next on selected sources of grey literature and the findings of relevant, reputable organizations that assess policy and program effectiveness. Analysts prepare high level summaries of each source's key findings and quality; summaries are reviewed independently by another team member. A final evidence rating is assigned based on an assessment of the available information.

This database continues to be a key resource in Wisconsin for many of the applicants to the Wisconsin Partnership Programs' Community-Academic Partnership grant program as well as others across the state and nation seeking to identify effective health improvement policies and programs.

Evidence-Based Health Policy Project (EBHPP)

www.evidencebasedhealthpolicy.org

The EBHPP, a partnership with the La Follette School of Public Affairs and the Wisconsin Legislative Council, connects lawmakers and researchers, along with public and private sector decision leaders to advance Wisconsin's health.

- Provides policy makers, in both the public and private sectors, with timely, nonpartisan, high-quality information for evidence-based decision making.
- Increases involvement of University of Wisconsin research and teaching activities in topical issues of state public policy.
- Draws on the leadership and talent of academic, government, and industry experts.
- Promotes the translation of research into practice and of practice into research.
- Designated as a core community engagement component of the University of Wisconsin School of Medicine and Public Health Institute for Clinical and Translational Research - Community Academic Partnership (ICTR-CAP).

Supported in part by the Wisconsin Partnership Program, UW School of Medicine and Public Health; the UW Chancellor's Office; and the UW Institute for Clinical & Translational Research.



Robert M. La Follette
School of Public Affairs
UNIVERSITY OF WISCONSIN-MADISON



UNIVERSITY OF WISCONSIN
Population Health Institute
Translating Research for Policy and Practice



WISCONSIN
LEGISLATIVE COUNCIL

Executive Committee and Institute Staff

The Population Health Institute supports the mission of our integrated School of Medicine and Public Health to translate public health and health policy research for practice. We consider our work an embodiment of the Wisconsin Idea, working with the public and private sectors – government, business, advocates, and community members-- at the state and local level -- toward a healthier Wisconsin.

The Executive Committee provides guidance to the Director on the performance of the Institute, reviewing goals and objectives and evaluating accomplishments through this annual report.

Alexandra K. Adams

Associate Professor, Department of Medicine
UW School of Medicine and Public Health

Ron Cisler

Director
Center for Urban Population Health

Tim Corden

Associate Professor of Pediatrics Critical Care, Medical College of Wisconsin
Children's Hospital of Wisconsin
Associate Professor of Pediatrics - Critical Care, Co-Director, Policy Core – Injury Research Center
Medical College of Wisconsin
Children's Hospital of Wisconsin

Tom DeLeire

Professor of Public Affairs and Economics
Director of the La Follette School of Public Affairs
Director, Population Health Institute
University of Wisconsin-Madison

F. Javier Nieto

Chair, UW Department of Population Health Sciences
Professor, Population Health Sciences and Family Medicine
UW School of Medicine and Public Health

Tom Oliver

Professor, Population Health Sciences
Director, UW Master of Public Health Program
UW School of Medicine and Public Health

Patrick Remington

Associate Dean for Public Health
Professor, Population Health Sciences
UW School of Medicine and Public Health

Maureen A. Smith

Assistant Director of UW Institute for Clinical and Translational Research (ICTR)
Faculty Director, Health Innovation Program (HIP), ICTR
Director, Community-Academic Partnerships (CAP) Core, ICTR
Associate Professor, Departments of Population Health Sciences and Family Medicine
UW School of Medicine and Public Health

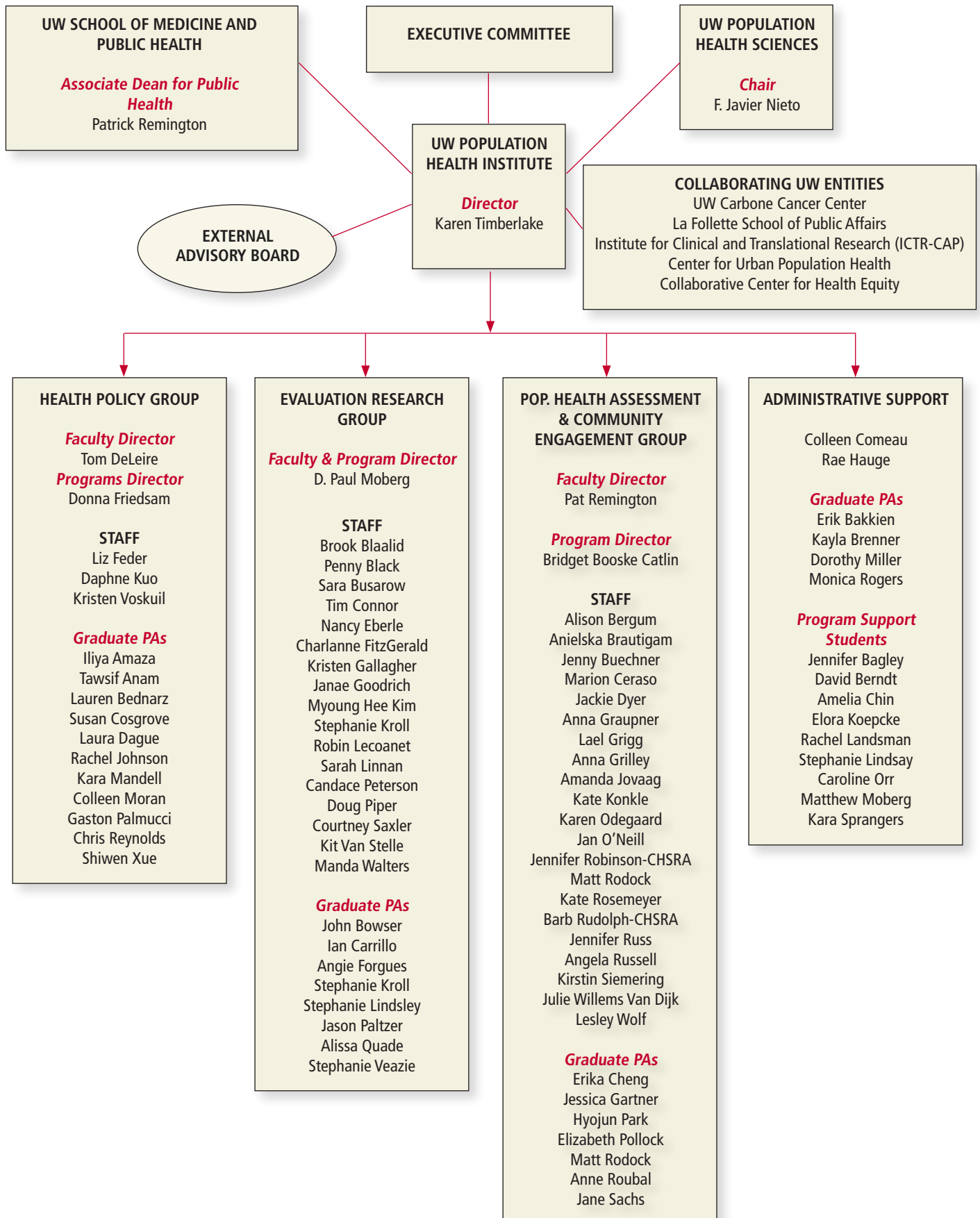
Barbara (Bobbi) Wolfe

Professor, Departments of Public Affairs and Economics
UW La Follette School of Public Affairs
Professor, Department of Population Health Sciences
UW School of Medicine and Public Health

Susan Zahner

Vilas Distinguished Achievement Professor
Associate Professor, School of Nursing
UW School of Medicine and Public Health

UW Population Health Institute



Institute Staff in 2012

Alison Bergum, MPA, Associate Researcher
Brooke Balaalid, MS, Outreach Specialist
Penny Black, MS, Assistant Researcher
Bridget Booske Catlin, PhD, MHSA, Senior Scientist
 Program Director, MATCH Group
Jennifer Buechner, BS, Research Specialist
Sara Busarow, MD, MPH, Associate Researcher
Marion Ceraso, MHS, MA
 Director, Education and Training
Colleen Comeau, AAS
 University Services Associate II
Tim Connor, MS, MA, Associate Researcher
Tom DeLeire, PhD, Professor
 Faculty Director, Health Policy
Jackie Dyer, University Services Associate II
Nancy Eberle, MPH, Assistant Researcher
Liz Feder, PhD, Associate Researcher
Charlanne FitzGerald, MPH, Researcher
Donna Friedsam, MPH, Researcher
 Programs Director, Health Policy
Kristin Gallagher, MS, Assistant Researcher
Janae Goodrich, BA, Research Specialist
Anna Graupner, MPH, Assistant Researcher
Rae Hauge, BA, Grants Manager
Lael Grigg, MPA, Assistant Researcher
Amanda Jovaag, MS, Associate Researcher
Myoung Hee Kim, PhD, Associate Researcher
David Kindig, MD, PhD, Senior Advisor
Kate Konkle, MPH, Outreach Specialist
Daphne Kuo, PhD, Assistant Scientist
Robin Lecoanet, JD, Researcher
Sarah Linnan, BS, Research Specialist
D. Paul Moberg, PhD
 Senior Scientist and Research Professor
 Faculty and Program Director, Evaluation Research
Karen Odegaard, MPH, Associate Researcher
Jan O'Neill, MPA, Associate Researcher
Candace Peterson, PhD Associate Researcher
Doug Piper, PhD, Senior Scientist

Patrick Remington, MD, MPH
 Associate Dean for Public Health
 Faculty Director, PHACE Group
Matt Rodock, MPH, Assistant Researcher
Jennifer Russ, MPA, Assistant Researcher
Angela Russell, MS, Associate Researcher
Barbara Rudolph, PhD, Senior Scientist
Courtney Saxler, MPH, Associate Researcher
Kirstin Siemering, DrPH, RD, Researcher
Karen Timberlake, JD, Director,
 Associate Professor (CHS)
Kit Van Stelle, MA, Researcher
Kristen Voskuil, MA, Associate Researcher
Manda Walters, MS, Outreach Specialist
Julie Willems Van Dijk, PhD, RN
 Associate Scientist
Lesley Wolf, University Services Associate II

Institute Graduate Students in 2012

Iliya Amaza	Dorothy Miller
Tawsif Anam	Colleen Moran
Lauren Bednarz	Gaston Palmucci
John Bowser	Jason Paltzer
Kayla Brenner	Hyojun Park
Ian Carrillo	Elizabeth Pollock
Erika Cheng	Alissa Quade
Susan Cosgrove	Chris Reynolds
Laura Dague	Monica Rodgers
Angie Forgues	Matt Rodock
Jessica Gartner	Anne Roubal
Rachel Johnson	Jane Sachs
Stephanie Kroll	Stephanie Veazie
Stephanie Lindsley	Shiwen Xue
Kara Mandell	

Conferences, Seminars, Publications, Programs

Institute-Sponsored Seminars

February 6, 2012

Economic Self-sufficiency, Complex Families and the Intergenerational Transmission of Poverty.

Timothy M. Smeeding, Director, University of Wisconsin Institute for Research on Poverty, and A & S Distinguished Professor of Public Affairs and Economics, Robert M. La Follette School of Public Affairs

October 1, 2012

Sex, Love and Money: Trends in U.S. Reproductive Health Policy

R. Alta Charo, JD, Warren P. Knowles Professor of Law and Bioethics, University of Wisconsin-Madison

November 5, 2012

A Closer Look: Understanding Diabetes by Connecting Community Health and EHR Data

Brian Arndt, MD, Assistant Professor, Family Medicine, University of Wisconsin School of Medicine and Public Health; Larry Hanrahan MS, PhD, Director of Public Health Informatics and Chief Epidemiologist, Wisconsin Division of Public Health; Adjunct Professor, Department of Population Health Sciences, University of Wisconsin School of Medicine and Public Health

December 3, 2012

The Link Between Income and Health

Bobbi Wolfe, MA, PhD, Professor of Public Affairs, Economics and Population Health Sciences, University of Wisconsin-Madison

Healthy Wisconsin Leadership Programs

Writing Successful Grants: This Time You Are the Reviewer!

Mary Jo Knobloch, MPH, CPH, Program Officer, Wisconsin Partnership Program
Wausau, WI
March 22, 2012, March 29, 2012

Community Benefit for Health Improvement: Hospital, Public Health and Community Partnerships

Wisconsin Dells, WI
March 23, 2012

Working Across the Policy Continuum: A Collaboration with the Wisconsin Division of Public Health Nutrition, Physical Activity and Obesity Program

Stevens Point, WI
April 24, 2012

Capacity Building from the Inside Out in Your Work and Community

Juan Carlos Ruiz, National Community Capacity Consultants, Milwaukee, WI
2012 Wisconsin State Prevention Conference
Wisconsin Dells, WI
June 11, 2012

Stress Reduction and Time Management: Simple Practices to Help You Excel in and Enjoy Your Work

Wausau, WI
November 29, 2012

Capitol Briefings by the Evidence-Based Health Policy Project

February 22, 2012

Evidence-Based Health Policy Project Briefing ACO Innovators: Health System Transformation in Wisconsin

Speakers: Jeff Thompson, Gunderson Lutheran; George Kerwin, Bellin Health; Craig Samitt, Dean Health System; Elliott Fisher, Dartmouth Medical School

Facilitator: Jonathan Jaffery, UW School of Medicine and Public Health

March 6, 2012

An Evidence-Based Health Policy Project Forum Long-Term Care: Part I A Two-Part Forum

Nursing Homes: What Policy and Decision Makers Need to Know Now

Speakers: Robyn Stone, PhD, Institute for the Future of Aging Services; Barbara Bowers, PhD, RN, FAAN, UW Madison School of Nursing; Amy Jo Haavisto Kind, MD, PhD, UWSMPH and William S. Middleton Memorial Veterans Hospital; Kim Marheine, Board on Aging and Long-Term Care; Sarah Thompson, PhD, RN, FAAN, Univ. of Nebraska Medical Center College of Nursing; Nathan Williams, MS, MetaStar, Inc.; Jody Rothe, RN, WCC, MetaStar, Inc.

Facilitator: Tracy Schroepfer, PhD, UW Madison School of Social Work

April 18, 2012

Evidence-Based Health Policy Project Briefing Reducing Drunk Driving in Wisconsin: What Works, What Doesn't?

Speakers: Barron H. Lerner, MD, PhD, Columbia University; Julia Sherman, WI Alcohol Policy Project, UW Law School; D. Paul Moberg, PhD, UW Population Health Institute; Michael L. Rothschild, PhD, Professor of Marketing (Emeritus), UW School of Business



Publications

Wisconsin's Experience with Medicaid Auto-Enrollment Lessons for Other States

DeLeire T, Leininger L, Dague L, Mok S, Friedsam D.
Medicare & Medicaid Research Review 2(2):E1-E20, 2012

Assessing State Substance Abuse Prevention Infrastructure Through the Lens of CSAP's Strategic Prevention Framework

Piper D, Stein-Seroussi A, Flewelling R, Orwin RG, Buchanan R.
Evaluation and Planning 35(1):66-77, 2012

Partners and Tools Help Simplify Assessments

Willems Van Dijk JA.
Health Progress (Journal of the Catholic Health Association of the US) 93(1): 66-69, Jan-Feb 2012

Disparities in premature Mortality between High- and Low-income US counties.

Cheng ER, Kindig DA.
Preventing Chronic Disease (9):110-120, 2012

Standardized Childhood Fitness Percentiles Derived from School-based Testing.

Carrel AL, Bowser J, White D, Moberg DP et al.
Journal of Pediatrics 161:120-124, 2012.

Are Community-Level Financial Data Adequate to Assess Population Health Investments?

Casper T, Kindig DA.
Preventing Chronic Disease 9:120066, 2012

Is Hospital Community Benefit Charity Care?

Bakken E, Kindig DA.
Wisconsin Medical Journal 111 (5): 215-219, 2012

Reports

Wisconsin Initiative to Promote Healthy Lifestyles

Screening, Brief Intervention and Referral to Treatment (SBIRT)

Final Progress Report to the Substance Abuse and Mental Health Services Administration

Prepared By: Lecoanet R, Linnan S, Moberg DP
August 2012

Final Outcomes Report

Screening, Brief Intervention and Referral to Treatment (SBIRT)

Prepared By: Linnan S, Lecoanet R, Moberg, DP
May 2012

Report #3. Evaluation of Wisconsin's BadgerCare Plus Core Plan for Adults without Dependent Children: Is Early Utilization Distorted by Pent-Up Demand?

Prepared By: DeLeire T, Friedsam D, Dague L, Kuo D, Leininger L, Meier S, Voskuil K
May 2012

Wisconsin Health Trends: 2011 Progress Report

Prepared By: Remington PL, Roubal AM, Catlin BB, Timberlake K
2012



Selected Abstracts and Presentations

A Health Policy Advocacy Case for Medical Students

Feder E
Innovations in Medical Education, 2013, USC Keck School of Medicine
February 2012

Collaborative Leadership for New Local Health Officers

Ceraso M
Local Health Officer Orientation, Wausau, WI
February 2012

Data Driven Place-Based Giving

Catlin BB
North Carolina Grantmakers Network, Greensboro, NC
March 2012

Social Determinants of Health: Moving from Awareness to Action in Your Community

Cofsky A & Willems Van Dijk J
Association of Community Health Improvement, Denver, CO
March 2012

Where Would You Put the Money?: A MultiSectoral Business Model for Population Health

Kindig D
Thomas Inui Lecture Harvard University Department of Population Medicine
April 2012

Connecting Education, Income, and Health: Advancing Community Impact Across the Lifespan

Willems Van Dijk J
United Way Community Leaders Conference, Nashville, TN
May 2012

County Health Roadmaps: Mobilizing for Action

O'Neill J
Kentucky Quality Conference, Frankfurt, KY
May 2012

Great Lakes Inter-Tribal Council Honoring Our Children Project Brings Positive Results

Poster Presentation
FitzGerald CJ, Gallagher K, Weborg C, Ebbert L, Reed C, Burgess S.
Healthy Start Grantee Meeting, Arlington, VA
May 2012

Estimates of Crowd-Out from a Public Health Insurance Expansion Using Administrative Data

Dague L
Population Association of America, San Francisco, CA
May 2012

Fit Families: Changing Nutrition and Physical Activity Behaviors to Prevent Childhood Obesity

Poster Presentation
FitzGerald CJ, Lee L, Gallagher K.
Wisconsin WIC Conference, Middleton, WI
June 2012

Expanding Coverage to Uninsured Childless Adults: Effect on the Use of Health Care

DeLeire T
Academy Health Annual Research Meeting, Orlando, FL
June 2012
American Society of Health Economists, Minneapolis, MN
June 2012

The Predictive Capability of a Self-Reported Health Screener for Childless Adults in Medicaid

Leininger L
Academy Health Annual Research Meeting, Orlando, FL
June 2012

Community Assessment & Action

Odegaard K
Obesity Prevention Summit, Wisconsin Dells, WI
June 2012

App Demo: County Health Rankings & Roadmaps

Remington PL & Catlin BB
Health Datapalooza, Washington, DC
June 2012

2012 County Health Rankings: Using Data to Drive Local Decisions

Russell A
California Health Policy Forum, Sacramento, CA
July 2012

County Health Rankings & Healthy Community Design

Russell A
Upper Midwest American Planning Association Conference, Madison, WI
September 2012

Evidence-Based Health Policy Project

Feder E

Leading the Way – UW/MCW Partnership Funds,
Milwaukee WI

September 2012

University of Wisconsin Population Health Institute:**Community Engagement and Data Resources**

Ceraso M

Communities of Excellence Meeting, St. Joseph, MO

October 2012

Health Impact Assessment of a Transitional Jobs Program

Feder E

American Public Health Association, San Francisco

October 2012

The Effect of Public Insurance on the Labor Supply of Childless Adults

DeLeire T

Association of Public Policy and Management, Baltimore, MD

November 2012

The Predictive Capacity of a Self-Reported Health Screener for Adults on Medicaid

Leininger L

Association of Public Policy and Management, Baltimore, MD

November 201

A Research Agenda for Population Health

Kindig D

AcademyHealth Strategic Planning Retreat, Washington, DC

December 2012

Analyzing Health Status of All Counties in the US.

Remington PL

Institute of Medicine Workshop: Core Metrics for Better Care,
Lower Costs, and Better Health, Irvine, CA

December 2012

Issue Briefs**November 2012; Vol. 11, No 2**

Friedsam D

Wisconsin's Health Care Quality Among the Best . . .
and Among the Worst**November 2012; Vol. 11, No 1**

Feder E & Froedsa, D

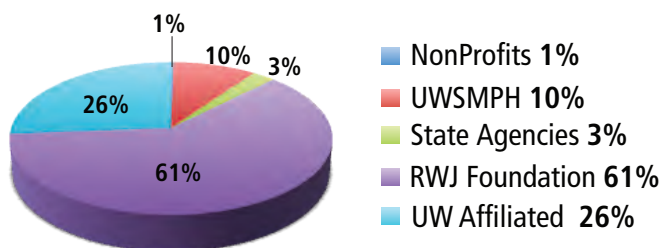
How Many Doctors Will Wisconsin Need?

What Should Wisconsin's Medical Schools Be Doing?

eNEWS – Published MonthlyAvailable at <http://uwphi.pophealth.wisc.edu/publications/eNews.htm>

Budget

The Institute's total budget for 2012 was approximately \$4.1 million. This funding comes from a diverse mix of sources, including The Robert Wood Johnson Foundation, the Wisconsin Partnership Program (Blue Cross/Blue Shield conversion), Wisconsin state agencies, federal agencies, core funds from the UW School of Medicine and Public Health, and several foundation and other non-profit sources. Federal funds flow to the Institute via several of these resources. The following graph summarizes funding source as percent of the Institute's total budget:



National, State, Tribal & Community Organizations

Great Lakes Inter-Tribal Council, Inc.

- Honoring Our Children
- Honoring Our Children Community Based Doula Program
- Family Foundations Home Visiting Program

Lac Courte Oreilles Band of Lake Superior Chippewa Indians

- Mino Maajisewin Program

Indianhead Community Action Agency

- Strategic Prevention Framework State Incentive Grant (SPF-SIG)

Milwaukee County Department of Health & Human Services

- Milwaukee County Offender Reentry Project

Wisconsin Collaborative For Healthcare Quality

National Network of Public Health Institutes

- Health Impact Assessment Project

State Government Agencies

South Dakota Dept. of Social Services

- Strategic Prevention Framework State Incentive Grant (SPF-SIG)

WI Department of Corrections, Dept. of Health Services and Office of Justice Assistance

- Evaluation for the Treatment & Diversion (TAD) Programs

WI Department of Health Services (DHS)

- Chronic Disease Program Integration
- Wisconsin Diabetes Quality Improvement Collaborative
- Evaluation of BadgerCare Plus
- Screening, Brief Intervention and Referral to Treatment (SBIRT)
- Mental Health Program Evaluation
- National Public Health Improvement Program
- Strategic Prevention Framework State Incentive Grant (SPF-SIG)
- Wisconsin Practice-based Research Network (WIPBRN)
- Fit Families – Supplemental Nutrition Assistance Program Education

WI Office of Justice Assistance

- ARRA Misdemeanor Diversion and Youthful Offender Programs

Robert Wood Johnson Foundation (RWJF)

- Mobilizing Action Toward Community Health (MATCH)
- County Health Roadmaps
- State Health Access Reform Evaluation (SHARE) – BadgerCare Research

UW School of Medicine & Public Health (UWSMPH)

- UWPHI Core Funding

UW Affiliated-Foundations & Programs

UW Partnership Program

- Evidence-based Health Policy Project
- Evaluation of the Lifecourse Initiative for Healthy Families (LIHF)
- Evaluation of Medicaid Medical Homes for High Risk Pregnant Women
- Healthy Wisconsin Leadership Institute
- Making Wisconsin the Healthiest State
- Wisconsin Population Health Fellowship Program
- Portage County Fit Communities
- Wisconsin Partnership for Childhood Fitness
- Increasing Cultural Congruence among Nurses in Wisconsin

UW Institute for Clinical Translational Research (ICTR)

- Disparities in Wisconsin's Diabetes Outcome
- ICTR Program Evaluation



UNIVERSITY OF WISCONSIN

Population Health Institute

Translating Research for Policy and Practice

Population Health Institute
Department of Population Health Sciences
University of Wisconsin School of Medicine and Public Health
575 WARF Building
610 Walnut Street Madison, WI 53726-2336

Phone: (608) 263-6294 Fax: (608) 262-6404

<http://uwphi.pophealth.wisc.edu>