

# UNIVERSITY OF WISCONSIN POPULATION HEALTH INSTITUTE



## Translating Research for Policy and Practice

### Annual Report 2011

## Contents

### University of Wisconsin Population Health Institute *Translating Research for Policy and Practice* Annual Report 2011

- 3** Letters from Dean Golden and Karen Timberlake
- 4** Mission Statement
- 5** Community Advisory Board
- 6** Affiliated Faculty and Investigators
- 8** Institute Programs and Cross-Cutting Themes
- 9** Health Policy
- 10** Program Evaluation
- 11** Mobilizing Action Toward Community Health (MATCH)
- 12** Service Learning
- 13** Community Engagement
- 14** Evidence Based Practice
- 15** Executive Committee and Institute Staff
- 18** Conferences, Seminars, Publications, Programs, Reports
- 22** Budget

## Dean Robert Golden

At the University of Wisconsin School of Medicine and Public Health, we understand that health is about much more than access to medical care. As the School strives to integrate biomedical sciences, care of individual patients, and a focus on the health of diverse populations, we are fortunate to have an asset like the Population Health Institute.



The Population Health Institute's work is at the forefront of the University of Wisconsin School of Medicine and Public Health's efforts to improve the health of everyone in the state of Wisconsin, leading by example to help the entire country to move forward in not only diagnosing and treating disease, but preventing disease and promoting health.

Improving health requires closing the gap between what we know and what we do, translating knowledge and ideas for real application in policy, program, and practice. As translators, we must participate in a conversation, not deliver a lecture – seeking to understand the challenges facing our communities, policy makers, and leaders in all sectors as they seek to become healthier, and helping meet those challenges with tools, resources, and connections that advance their work.

Through its dissemination of the national County Health Rankings & Roadmaps, policy briefings at the state capitol, analysis of significant developments in health policy, and partnership with diverse community organizations in evaluation of their health improvement efforts, the Population Health Institute is fully engaged in important conversations with people across the state and across the country who are working to make the state and nation healthier.

Of particular note this year is the Institute's new leadership. Karen Timberlake joined the Institute in October 2011. As Wisconsin's former health secretary, Karen brings broad experience across the spectrum of health care, public health, and health improvement, and has earned her reputation as a thoughtful, imaginative, and collaborative leader. I am delighted that she has joined our faculty and the Institute. I would also like to thank Dr. Tom DeLeire for his excellent service as the Institute's interim director.

## Karen Timberlake, Director

It's my great honor to join the talented team at the UW Population Health Institute and to share this report of our efforts in 2011. We pride ourselves on the innovation, quality, and objectivity of our work, our comprehensive approach to population health improvement, and our focus on translating research, data, and policies for action.



New in 2011 are the County Health Roadmaps component of the national County Health Rankings & Roadmaps program. In close partnership with the Robert Wood Johnson Foundation, the Institute mobilizes local communities, national partners and leaders across all sectors to improve health through grants, expanded web based action resources, and customized technical assistance on strategies to improve health. The Institute has also stepped into the emerging field of Health Impact Assessments with a project to study the health effects of Wisconsin's transitional jobs program. We are supporting implementation of the community benefit requirement under the Patient Protection and Affordable Care Act, developing model tools and resources for hospitals, local public health agencies, and their diverse community partners to use as they work to understand health improvement needs at the local level and move forward together to address them.

Moving ahead, the Institute will continue to advance the health of people in Wisconsin and nationally by sharing information and building partnerships. We assess and report on broad indicators of health: what indicators are moving in the right direction? Which are not? What do we do about it? We build and share the evidence base of effective programs and policies. We support engagement with diverse community leaders and members who are pursuing policy and system change for health improvement. Above all, we will continue to be a go-to resource for credible, objective, timely information on a wide range of topics for health improvement. We appreciate your interest in our work and welcome your thoughts and ideas.

## Mission Statement

The Institute serves as a bridge among the arenas of public health and health policy and practice with an active advisory board, issue briefs and reports, and periodic conferences and educational programs.

It also serves as a focal point for public health and health policy within the University of Wisconsin School of Medicine and Public Health, bringing together faculty, staff, and students interested in applying their skills and experience to address significant questions of topical relevance beyond the academic arena.

**Mission:** To develop and promote evidence-based policy and practice in advancing health and well-being at local, state, and national levels.

### **We strive to:**

- ▶ Address a broad range of real-world problems of topical importance to government, business, providers and the public
- ▶ Promote partnerships of inquiry between researchers and users of research, breaking down barriers between the academic community and public and private sector policymakers
- ▶ Advance the development of interdisciplinary research, along the spectrum from public health to health care, at the University of Wisconsin-Madison and other academic settings in Wisconsin
- ▶ Provide outreach and continuing education for practitioners and opportunities for applied learning for MPH, medical, graduate, and other health professions students
- ▶ Contribute to public health and health care practice and policy decisions that improve Wisconsin's population health
- ▶ Maintain the highest level of relevance, rigor, and objectivity

## Community Advisory Board

The Institute is guided by a 17-member Community Advisory Board, with members from the health care, public health, business, and nonprofit sectors, as well as leaders from Wisconsin's legislature. The Board meets two to three times per year to guide the work of the Institute and provide feedback on its programs and publications.

### Advisory Board Members in 2011

**Bevan Baker**

Commissioner  
City of Milwaukee Health  
Department

**Steve Brenton**

President  
Wisconsin Hospital Association

**Cheryl DeMars**

CEO  
The Alliance

**Kurt Eggebrecht**

Health Officer  
Appleton City Health Department

**Sen. Pam Galloway**

Wisconsin State Legislature

**Curt Gielow**

Executive Dean  
Concordia University School of  
Pharmacy

**Gregory Nycz**

Director  
Family Health Center of Marshfield

**Christopher Queram**

President and Chief Executive Officer  
Wisconsin Collaborative for  
Healthcare Quality

**Peggy Rosenzweig**

Former UW Regent and Legislator

**Ayaz Samadani**

Family Physician  
Dean Clinic–Beaver Dam

**Greg Simmons**

President and CEO  
MetaStar, Inc

**Tim Size**

Executive Director  
Rural Wisconsin Health Cooperative

**Arvid Tillmar**

Owner  
Tillmar Connect, LLC

**Susan Turney**

Chief Executive Officer  
Wisconsin Medical Society  
(Dr. Turney left the Advisory Board in  
2011 and the position was filled by  
Tim Bartholow, CEO of the Wisconsin  
Medical Society)



The Population Health Institute plays a vital role in helping the full range of policy makers understand what works to improve health care value. Through their work, we're able to evaluate the impact of key strategies and then apply those learnings to our efforts to control costs, improve quality and engage individuals in their health. Increasingly, employers are focusing on their role as population health managers for their workforce. Having evidence-based strategies is key to our ability to be successful.

*Cheryl DeMars, President  
and CEO  
The Alliance*

## Affiliated Faculty and Investigators

---



**Aaron Carrel, MD**

Professor, Department of Pediatrics

---



**Thomas DeLeire, PhD**

Director, LaFollette School of Public Affairs  
Professor, Public Affairs and Population Health Sciences

---



**Jonathan Jaffery, MD**

Associate Professor, Department of Medicine  
Medical Director, Delivery System Innovation, UW Medical Foundation

---



**David Kindig, MD, PhD**

Emeritus Professor, Population Health Sciences  
Emeritus Vice-Chancellor, Health Sciences

---



**Lindsey Leininger, PhD, MA**

Assistant Professor, University of Illinois-Chicago  
Researcher, Chapin Hall at the University of Chicago

---



**D. Paul Moberg, PhD**

Research Professor, Population Health Sciences  
Senior Scientist, School of Medicine and Public Health

---



**John Mullahy, PhD**

Professor, Population Health Sciences  
Affiliate Professor, LaFollette School of Public Affairs

**Tom Oliver, PhD, MHA**

Professor, Population Health Sciences  
Director, Master of Public Health Program

---

**Paul Peppard, PhD**

Assistant Professor, Population Health Sciences

---

**Patrick Remington, MD, MPH**

Associate Dean for Public Health, School of Medicine and Public Health  
Professor, Population Health Sciences

---

**Karen Timberlake, JD**

Associate Professor (CHS), Population Health Sciences  
Director, Population Health Institute

---

**David Vanness, PhD**

Assistant Professor, Population Health Sciences

---

**David L. Weimer, PhD**

Edwin E. Witte Professor of Political Economy  
LaFollette School of Public Affairs

---

**Barbara Wolfe, PhD**

Professor, Economics  
Professor, Population Health Sciences  
Professor, LaFollette School of Public Affairs

---

**Susan Zahner, DrPH, RN**

Associate Professor, School of Nursing

## Institute Programs and Cross-Cutting Themes

The Institute is led by nationally recognized leaders in applied public health and health policy research. Our progress during 2011 could not have been achieved without the ongoing contributions from members of our Community Advisory Board and support from the University of Wisconsin School of Medicine and Public Health and the Wisconsin Partnership Program.

### The Programs of the Institute

**Mobilizing Action Toward Community Health (MATCH):** Monitors and assesses population health, engages communities across the nation in community health improvement, and connects the Institute to

the public health and health care community in the state through seminars, conferences, training programs, and an active website.

**Health Policy:** Engages in research, consulting, and analysis in partnership with Wisconsin's leading public and private sector policymakers in health and health care, focusing especially on cost, financing, coverage, access, and health system performance.

**Program Evaluation:** Conducts evaluation projects in many areas of public health, including substance abuse prevention and treatment, maternal and child health, school health promotion and related areas.



### Cross-Cutting Themes

**Service Learning:** Serves as a population health 'laboratory' for learning, where graduate students and fellows apply their skills to real-world issues.

**Community Engagement:** Fosters strong partnerships between the University of Wisconsin and population health practitioners and policymakers.

**Evidence-Based Practice:** Evaluates and disseminates evidence-based policies and practices through its programs.



## Health Policy

**Description:** The Institute's health policy programs connect the University of Wisconsin School of Medicine and Public Health to Wisconsin's leading public and private sector policymakers in the public health and health care arenas with particular focus on cost, financing, access, coverage and on health system performance. The group conducts primary research, and communicates new and existing evidence and analyses through issue briefs, consultancies, briefings, forums, symposia and collaborative research.

**Primary Partners:** Legislators and their aides, executive agency leadership and their staff, organizations of health care providers, purchasers, payers and business groups.

### Highlights from 2011

#### Cost, Coverage & Access

- ▶ Conducted a multi-faceted evaluation of the BadgerCare Plus Core Plan for adults without dependent children (childless adults), in partnership with the Wisconsin Department of Health Services and with support from the federal Health Resources and Services Administration (HRSA)
- ▶ Completed final reports on health care utilization by Core Plan enrollees and on the utility of the Health Needs Assessment. Briefed state agency leaders and presented findings at national meetings

#### Evidence-Based Health Policy Project

- ▶ Delivered capitol briefings focusing on private sector innovations in health care financing and delivery, on the Accountable Care Organization model, and on mental health and corrections
- ▶ Initiated development of public health class on use of evidence in policy making, and contributed to the University of Wisconsin School of Medicine and Public Health

integrated cases for training of medical students, training them in health policy and interaction with elected officials

#### Health System Performance

- ▶ Completed an exploratory study of the potential uses of emerging data from the Wisconsin Health Information Organization (WHIO) – Wisconsin's all-payer claims database – comparing Medicaid, Medicare, and commercial insurance rates for quality of care process measures across Wisconsin counties and health service areas
- ▶ Completed a study of racial segregation and disparities in health care outcomes, focusing specifically on diabetes care
- ▶ Served on several government and industry committees including Wisconsin Collaborative for Health Care Quality (WCHQ) Aligning Forces for Quality initiative, the Wisconsin Health Information Organization data users group, and the UW Health ACO Planning Work Group

#### Teaching Applied Health Policy

- ▶ Mentored two LaFollette and two MPH graduate students as project assistants, and an economics doctoral student on BadgerCare research
- ▶ Delivered a summer course on Wisconsin health systems and financing, and lectured throughout campus courses on the federal Patient Protection and Affordable Care Act

#### Health Impact Assessment

- ▶ Collaborated with Wisconsin Department of Health Services to transition and sustain Wisconsin's Health Impact Assessment capacity. Attained support from National Network of Public Health Institutes to initiate Health Impact Assessment (HIA) pilots and processes



**Donna Friedsam**

*Researcher and  
Health Policy  
Programs Director*

## Program Evaluation



**Paul Moberg**

*Research Professor,  
Program and  
Faculty Director*

**Description:** The Program Evaluation group conducts assessments of programs in public health and human services. The group also maintains directly-funded evaluation research projects, rigorously evaluating innovative programs using experimental and quasi-experimental designs.

**Primary Partners:** Community, tribal and state governmental organizations; collaboration with national researchers, practitioners, and faculty and staff within the University of Wisconsin.

The Program Evaluation group was involved in 24 actively-funded projects during 2011. These projects cut across many areas of population health and use a diversity of approaches; the largest areas are substance abuse prevention and health promotion.

### Major Projects:

- ▶ Three Substance Abuse and Mental Health Services Administration (SAMHSA) funded state projects—the Strategic Prevention Framework State Incentives Grants (SPF-SIG) in Wisconsin and South Dakota and Wisconsin’s Screening, Brief Intervention, and Referral to Treatment (SBIRT) grant
- ▶ A National Institute on Drug Abuse funded study of Recovery Schools for high school students with substance use disorder
- ▶ Evaluation of correctional health programs providing treatment alternatives for offenders with substance abuse problems
- ▶ Evaluation of statewide mental health programs; nutrition programs; maternal and child health programs, and physical activity and fitness programs in schools.

Program evaluations particularly address health disparities and populations experiencing inequities. Projects focus on Native American health, partnering with the Great Lakes Inter-Tribal Council, and African American and Latino health, partnering with the Wisconsin Division of Public Health, the Division of Public Instruction and the Wisconsin Partnership Program. Longstanding evaluation studies are conducted under contract with the Wisconsin Department of Corrections, including examination of disparities in parole revocation and treatment alternatives to incarceration.

### Examples of the Services Provided:

- ▶ Designing and implementing comprehensive program evaluations
- ▶ Developing a wide range of evaluation designs and needs assessments
- ▶ Developing data collection methods and survey instruments
- ▶ Monitoring program services (e.g., measuring progress in reaching program objectives)
- ▶ Conducting qualitative research, including content analysis, intensive interviews, focus groups and site visits and statistical analysis of data from surveys and program-specific data sets
- ▶ Conducting rigorous evaluation research in many areas of public health and human services

## Mobilizing Action Toward Community Health (MATCH)

**Description:** The Mobilizing Action Toward Community Health (MATCH) group monitors health and health disparities in communities; reviews evidence on policies and programs to inform health policy, program planning, and evaluation; disseminates information in user friendly formats to motivate action toward community health improvement; and engages with communities in their efforts to improve community health.

MATCH provides opportunities for population health graduate and MPH students to engage in the analysis, interpretation, and communication of health data and offers seminars, conferences, and applied training and continuing education programs. Our work centers on providing tools and guidance for communities taking action to improve health.

### County Health Rankings & Roadmaps

The *County Health Rankings & Roadmaps* program grew from the original MATCH project that was initially funded by the Robert Wood Johnson Foundation in January 2009. It includes the *County Health Rankings*, first launched in February 2010 and then again in March 2011, and the *County Health Roadmaps* project that began in April 2011. Ranking the health of nearly every county in the nation, the *County Health Rankings* illustrate what we know when it comes to what's making people

sick or healthy. New in 2011, the *County Health Roadmaps* show what we can do to create healthier places to live, learn, work and play.

The *Roadmaps* project mobilizes local communities, national partners and leaders across all sectors to improve health. The project includes several elements: grants to local coalitions and partnerships among policymakers, business, education, public health, health care, and community organizations; grants to national organizations working to improve health; recognition of communities whose promising efforts have led to better health; and customized technical assistance on strategies to improve health.

### Making Wisconsin the Healthiest State

**Wisconsin Health Trends: 2011 Progress Report** was initiated in 2011

**What Works for Health:** Policies and Programs to Improve Wisconsin's Health database, available at <http://WhatWorksForHealth.wisc.edu>. This database continues to be a key resource for many of the applicants to the Wisconsin Partnership Programs' Community-Academic Partnership grant program as well as others across the state seeking to identify effective health improvement policies and programs



**Bridget Booske Catlin**

Senior Scientist  
and Program  
Director



**Primary Partners:** Diverse organizations and individuals at the national, state, and local levels from non-profit academic, governmental, business and local public health sectors working to improve the health of the state of Wisconsin and across the nation.

#### Major Projects

- ▶ *County Health Rankings & Roadmaps*
- ▶ Making Wisconsin the Healthiest State
- ▶ Healthy Wisconsin Leadership Institute
- ▶ Population Health Service Fellowship Program
- ▶ First Monday Seminar Series
- ▶ Improving Population Health Blog

## Service Learning

**Description:** Each of the Institute's programs provides students and fellows the opportunity to "learn while doing." This focus on service learning adds to coursework that students take. Students working with the Institute are enrolled in the Population Health MS/PhD program, Master of Public Health (MPH) program, the LaFollette School of Public Affairs, the Department of Economics, and elsewhere. The Institute serves as a population health 'laboratory' for learning, where students apply their skills to real-world issues and, in turn, have an opportunity to publish results as issue briefs, in the *Wisconsin Medical Journal* and other publications.

**Primary Partners:** State and local health and health care leaders who provide service learning opportunities for students working in the Institute, or for fellows in the Wisconsin Population Health Service Fellowship.

### Healthy Wisconsin Leadership Institute

[www.hwli.org](http://www.hwli.org)

The year-long Community Teams program focuses on building public health and collaborative leadership skills for up to nine teams as they work to address health priorities in their communities. A cohort of four community teams graduated from the program

in June 2011. This year saw a record number of applications. The sixth cohort (2011-2012) includes seven teams representing community health initiatives: Beloit (healthy birth outcomes in the African American community), Douglas County (physical activity and nutrition), Central Wisconsin including Waushara, Marquette, Adams and Juneau counties (mental health), a statewide team (trauma-informed foster care), Oneida Tribe (enhanced health care utilization), Winnebago County (prevention of sexually transmitted infections), and a statewide team to assist with Community Health Improvement Process and Plans.

### Wisconsin Population Health Service Fellowship

<http://uwphi.pophealth.wisc.edu/programs/match/fellowship/index.htm>

The Fellowship program serves to develop the next generation of public health leaders skilled in planning, implementation, and evaluation of public health programs.

This two-year fellowship program provides recent masters level graduates with service and training opportunities in community based, non-profit, governmental and health service organizations.

### 2011 Population Health Service Fellows and Their Placement

**Katarina Grande**

Milwaukee Health Department & Center for Urban Population Health

**Katherine Vaughn-Jehring**

WI Division of Public Health Office of Policy and Practice & Allied Wellness Center

**Paula Tran Inzeo**

WI Division of Public Health Division Deputy Administrator & Bureau of Environmental and Occupational Health

**Kelli Stader**

WI Division of Public Health Southern Regional Office

**Emma Hynes**

WI Division of Public Health Maternal and Child Health Unit & WI Alliance for Women's Health

**Kristen Audet**

WI Division of Public Health & Rural WI Health Cooperative

**Tyler Weber**

Milwaukee Health Department & Lindsay Heights Neighborhood Health Alliance

**Rashonda Jones**

Milwaukee Health Department & United Way of Greater Milwaukee

**Akbar Husain**

WI Division of Public Health Western Regional Office

**Anneke Mohr**

WI Division of Public Health AIDS/HIV Program & Great Lakes Inter-Tribal Epidemiology Center

## Community Engagement

The “Wisconsin Idea” envisions close working relationships throughout the state of Wisconsin, such that “the beneficent influence of the University reaches every family in the State.” Institute staff members regularly engage with colleagues and partners in programs, applied research, program evaluation, committees, consulting, proposal development and other activities. These partnerships, some funded, some in-kind, and some simply collegial, include entities in the public and private sector as well as in other departments and centers throughout the University. The list provides a selected view of the myriad organizations with which Institute staff collaborated and/or consulted in 2011.

### Public/Governmental Agencies

- ▶ Wisconsin Department of Health Services
- ▶ Wisconsin Legislative Council
- ▶ Wisconsin Department of Corrections
- ▶ Wisconsin Department of Public Instruction
- ▶ Wisconsin Department of Employee Trust Funds
- ▶ National Institute on Drug Abuse
- ▶ Office of National Drug Control Policy
- ▶ Centers for Disease Control and Prevention
- ▶ Wisconsin Office of Justice Assistance
- ▶ Substance Abuse and Mental Health Services Administration

### Private and Voluntary Sector Agencies

- ▶ Alliance Employer Health Care Cooperative and Alliance Foundation
- ▶ Aurora Health Care, Inc.
- ▶ Great Lakes Inter-Tribal Council
- ▶ Medical College of Wisconsin
- ▶ The Robert Wood Johnson Foundation
- ▶ United Way of Dane County
- ▶ UW Medical Foundation
- ▶ Wisconsin Education Association
- ▶ Wisconsin Hospital Association
- ▶ Wisconsin Medical Society
- ▶ Wisconsin Nursing Association
- ▶ Intertribal Council of Michigan
- ▶ Wisconsin Association of Drug Court Professionals
- ▶ Wisconsin Collaborative for Healthcare Quality
- ▶ Wisconsin Council on Children and Families
- ▶ Women, Infants and Children Association



## Evidence Based Practice

### What Works For Health

[www.whatworksforhealth.wisc.edu](http://www.whatworksforhealth.wisc.edu)

This online database provides review and assessment of available research to rate the effectiveness of a broad variety of strategies that can affect health through changes to:

- ▶ health behaviors
- ▶ clinical care
- ▶ social and economic factors
- ▶ physical environment

The underlying research is based on a model of population health that emphasizes the many factors that can make communities healthier places to live, learn, work and play.

These tools systematically assess, summarize, and rate the evidence for policies and programs that can affect these factors. The goal: to provide public health professionals and community leaders with the information they need to make evidence-informed decisions about improving health in their communities, and where available, with tools to get started.

Analysts begin with a broad orientation search to define each policy or program and identify appropriate search terms. Targeted literature searches are conducted, focusing first on systematic reviews and peer reviewed articles. Searches focus next on selected sources of grey literature and the findings of relevant, reputable organizations that assess policy and program effectiveness. Analysts prepare high level summaries of each source's key findings and quality; summaries are reviewed independently by another team member. A final evidence rating is assigned based on an assessment of the available information.

### Evidence-Based Health Policy Project (EBHPP)

[www.evidencebasedhealthpolicy.org](http://www.evidencebasedhealthpolicy.org)

The EBHPP, a partnership with the LaFollette School of Public Affairs and the Wisconsin Legislative Council, connects lawmakers and researchers, along with public and private sector decision leaders, to advance Wisconsin's health.

- ▶ Provides policymakers, in both the public and private sectors, with timely, nonpartisan, high-quality information for evidence-based decision making
- ▶ Increases involvement of University of Wisconsin research and teaching activities in topical issues of state public policy
- ▶ Draws on the leadership and talent of academic, government, and industry experts
- ▶ Promotes the translation of research into practice and of practice into research
- ▶ Designated as a core community engagement component of the University of Wisconsin School of Medicine and Public Health Institute for Clinical and Translational Research - Community Academic Partnership (ICTR-CAP)



**ROBERT M. LA FOLLETTE**  
SCHOOL OF PUBLIC AFFAIRS  
University of Wisconsin-Madison



WISCONSIN  
LEGISLATIVE COUNCIL

## Executive Committee and Institute Staff

The Population Health Institute supports the mission of an integrated School of Medicine and Public Health, fostering translation of public health and health policy research. We consider our work an embodiment of the Wisconsin Idea by working across sectors toward a healthier Wisconsin.

The Executive Committee provides guidance to the Director on the performance of the Institute, reviewing goals and objectives and evaluating accomplishments through this annual report.

---

### **Gordon T. Ridley**

Senior Associate Dean  
UW Administration and Finance

---

### **Patrick Remington**

Associate Dean for Public Health  
Professor, Population Health Sciences  
UW School of Medicine and Public Health

---

### **F. Javier Nieto**

Chair, UW Department of Population Health Sciences  
Professor, Population Health Sciences and Family Medicine  
UW School of Medicine and Public Health

---

### **Alexandra K. Adams**

Associate Professor, Department of Family Medicine  
UW School of Medicine and Public Health

---

### **Ron Cisler**

Director  
Center for Urban Population Health

---

### **Tim Corden**

Associate Professor of Pediatrics Critical Care,  
Medical College of Wisconsin  
Children's Hospital of Wisconsin  
Associate Professor of Pediatrics - Critical Care,  
Co-Director, Policy Core – Injury Research  
Center  
Medical College of Wisconsin  
Children's Hospital of Wisconsin

---

### **Tom DeLeire**

Associate Professor of Public Affairs  
Interim Director, Population Health Institute  
UW School of Medicine and Public Health

---

### **Tom Oliver**

Professor, Population Health Sciences  
UW School of Medicine and Public Health

---

### **Maureen A. Smith**

Associate Professor, Departments of Population Health Sciences,  
Surgery, and Family Medicine  
Director, Health Innovation Program  
UW School of Medicine and Public Health

---

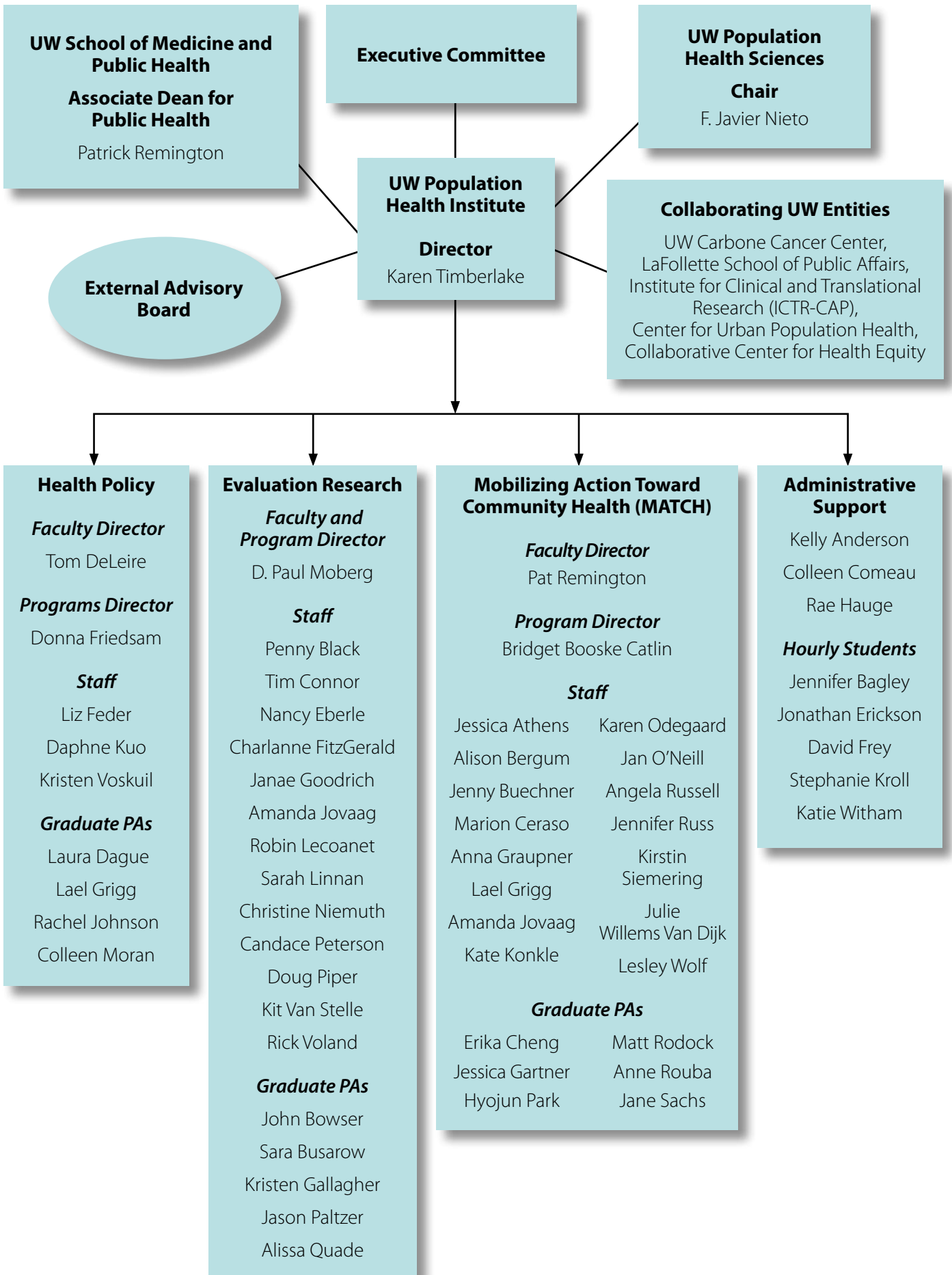
### **Barbara (Bobbi) Wolfe**

Professor, Departments of Population Health Sciences, Economics and  
LaFollette School of Public Affairs  
UW School of Medicine and Public Health

---

### **Susan Zahner**

Associate Professor, School of Nursing  
UW School of Medicine and Public Health





## Institute Staff in 2011

**Kelly Anderson**, Grants & Contract Manager

**Jessica Athens**, MS, Associate Researcher

**Alison Bergum**, MPA, Associate Researcher

**Bridget Booske Catlin**, PhD, MHSA, Senior Scientist  
Program Director, MATCH Group

**Jennifer Buechner**, BS, Research Specialist

**Marion Ceraso**, MHS, MA  
Director, Education and Training

**Colleen Comeau**, AAS  
University Services Associate II

**Tim Connor**, MS, MA, Associate Researcher

**Tom DeLeire**, PhD, Professor and Interim Director  
Faculty Director, Health Policy

**Nancy Eberle**, MPH, Assistant Researcher

**Liz Feder**, PhD, Associate Researcher

**Charlanne FitzGerald**, MPH, Researcher

**Donna Friedsam**, MPH, Researcher  
Programs Director, Health Policy

**Janae Goodrich**, BA, Research Specialist

**Anna Graupner**, MPH, Assistant Researcher

**Lael Grigg**, MPA, Assistant Researcher

**Barbara Hill**, MSSW, Researcher

**Nathan Jones**, PhD, Researcher  
UW Comprehensive Cancer Center

**Amanda Jovaag**, MS, Associate Researcher

**David Kindig**, MD, PhD, Senior Advisor

**Kate Konkle**, MPH, Outreach Specialist

**Daphne Kuo**, PhD, Assistant Scientist

**Robin Lecoanet**, JD, Researcher

**Sarah Linnan**, BS, Research Specialist

**D. Paul Moberg**, PhD Senior Scientist and  
Research Professor, Faculty and Program Director,  
Program Evaluation Group

**Christine Niemuth**, BA, Research Specialist

**Karen Odegaard**, MPH, Associate Researcher

**Jan O'Neill**, MPA, Associate Researcher

**Candace Peterson**, PhD, Associate Scientist

**Doug Piper**, PhD, Senior Scientist

**Seth Prins**, MPH, Associate Researcher

**Patrick Remington**, MD, MPH, Associate Dean  
for Public Health, Faculty Director, MATCH Group

**Jennifer Russ**, MPA, Assistant Researcher

**Angela Russell**, MS, Associate Researcher

**Kirstin Siemering**, DrPH, RD, Researcher

**Kit Van Stelle**, MA, Researcher

**Karen Timberlake**, JD, Director, Associate  
Professor (CHS)

**Rick Volland**, PhD, MA, Associate Researcher

**Kristen Voskuil**, MA, Associate Researcher

**Julie Willems Van Dijk**, PhD, RN  
Associate Scientist

**Lesley Wolf**, University Services Associate II

## 2011 Institute Graduate Students

**Penny Black**

**John Bowser**

**Sara Busarow**

**Erika Cheng**

**Ivan Cherniack**

**Laura Dague**

**Kristen Gallagher**

**Jessica Gartner**

**Lael Grigg**

**Rachel Johnson**

**Colleen Moran**

**Jason Paltzer**

**Hyojun Park**

**Matt Rodock**

**Anne Roubal**

**Jane Sachs**

## Conferences, Seminars, Publications, Programs

### Institute Sponsored Seminars

**February 7, 2011**

#### ***Public Health Ethics***

J. Paul Kelleher, PhD, Assistant Professor, University of Wisconsin-Madison Department of Medical History and Bioethics.

**March 7, 2011**

#### ***The Economics of Obesity***

John Cawley, PhD, Associate Professor, Cornell University College of Human Ecology.

**April 4, 2011**

#### ***Implementation of the Affordable Care Act***

Rogan Kersh, PhD, Associate Professor of Public Policy and Associate Dean for Academic Affairs, Robert F. Wagner Graduate School of Public Service at New York University.

**May 2, 2011**

#### ***Training Learners in Leadership and Whole Systems Change: Lessons from the University of Alberta School of Public Health, Canadian First Nations, Lithuania and the Canadian Forces***

Kenneth Zakariasen, DDS, MS, MS(ODA), PhD, Professor and Project Lead, Leadership and Organizational Change Studies Initiative, Department of Public Health Sciences at the University of Alberta School of Public Health

**October 3, 2011**

#### ***Rearranging the Deck Chairs or Avoiding the Iceberg? Update on the Partnership for Healthcare Payment Reform***

Karen E. Timberlake, JD, Director, University of Wisconsin Population Health Institute.

**November 7, 2011**

#### ***The State of Public Health in the UK: Past, Present, and Future***

Darren Shickle, Professor of Public Health, University of Leeds; Kevin Smith, Medical Advisor, Yorkshire and Humber Specialised Commissioning Group, National Health Service; Matthew Day, Registrar in Public Health, Yorkshire and Humber Specialised Commissioning Group, National Health Service.

**December 5, 2011**

#### ***HIV Risk and Access to Health Care among Mexican Migrants in the U.S.***

Ana Martinez Donate, PhD, Assistant Professor, University of Wisconsin Department of Population Health Sciences.

### Healthy Wisconsin Leadership Programs

**April 2011**

#### ***Mental Health Care and Violence Prevention: Reframing the Conversation for Policy Change***

***Fourth Street Forum Program #921: Violence, Victims and Mental Health Frameworks Institute***

### Capitol Briefings by the Evidence-Based Health Policy Project

**February 24, 2011**

#### ***Public Policy and Accountable Care Organizations***

Elliott Fisher, Dartmouth Medical School

**May 25, 2011**

#### ***Private Sector Employer Innovations in Health Care Financing and Delivery: Do they translate to a broader population? Can they improve community wellness? Reduce state health expenditures?***

John Torinus, Chairman of Serigraph  
George Kerwin, President and CEO, Bellin Health

**December 15, 2011**

#### ***Policy Innovations in Mental Health and Corrections: Wisconsin Policy and Possible Alternatives***

Kristen Roman, Madison Police Department  
Judge Paul J. Lenz, Eau Claire County  
Cecelia Klingele, UW Law School  
Mike Koenigs, UW Department of Psychiatry

## Publications

### **Wisconsin's BadgerCare Plus Reform: Impact on Low-Income Families' Enrollment and Retention in Public Coverage**

Leininger LL, Friedsam D, Dague L, Mok S, Hynes E, Bergum A, Aksamitauskas M, Oliver T, DeLeire T  
*Health Services Research* 46(1p2):336-347, 2011

### **Estimates of Crowd-Out from a Public Health Insurance Expansion Using Administrative Data**

Dague L, DeLeire T, Friedsam D, Kuo D, Leininger L, Meier S, Voskuil K  
*National Bureau of Economic Research*;  
Working Paper No. 17009, May 2011

### **The Target Efficiency of Online Medicaid/CHIP Enrollment: An Evaluation of Wisconsin's ACCESS Internet Portal**

Leininger LJ, Friedsam D, Voskuil K, DeLeire T  
*Robert Wood Johnson Foundation State Health Access Reform Evaluation (SHARE)* February 24, 2011

### **Awareness of Racial and Socioeconomic Health Disparities in the United States: The National Opinion Survey on Health and Health Disparities, 2008-2009**

Booske BC, Robert SA, Rohan AMK  
*Preventing Chronic Disease* 8(4): A73, 2011

### **Evaluating Community-based Public Health Leadership Training**

Ceraso M, Gruebling K, Layde P, Remington P, Hill B, Morzinski J, Ore P  
*Journal of Public Health Management and Practice* 17(4):344-349, 2011

### **Measuring the Health of Communities – How and Why?**

Remington PL, Booske BC  
*Journal of Public Health Management and Practice* 17(5):397-400, 2011

### **US Opinions on Health Determinants and Social Policy as Health Policy**

Robert SA, Booske BC  
*American Journal Public Health* 101(9):1655-1663, 2011

### **Health Starts Where You Live, Learn, Work and Play: Ranking Counties by Their Health**

Russell, A  
*Parks & Recreation* May:20-21, 2011

### **Making Wisconsin Healthier: Health Starts Where You Live, Learn, Work and Play.**

Russell, A.  
*Wisconsin Counties* May: 22-28, 2011

## Reports

### **How do Medicaid, Medicare, and Commercial Insurance Vary in Community-Level Performance? Using Claims Data from the Wisconsin Health Information Organization (WHIO) to Assess Variation in Population Health Processes**

Prepared By: Friedsam D, Kuo D, Voskuil K  
November 2011

### **Evaluation of Wisconsin's BadgerCare Plus Core Plan for Adults without Dependent Children. How Does Coverage of Childless Adults Affect Their Utilization? Report #1**

Principal Investigator: DeLeire T  
Project Team: Dague L, Voskuil K, Meier S, Leininger L, Kuo D  
Project Manager: Friedsam D  
December 2011

### **Evaluation of Wisconsin's BadgerCare Plus Core Plan for Adults without Dependent Children. The Utility of the Health Needs Assessment (HNA). Report #2**

Principal Investigator: DeLeire T  
Project Team: Dague L, Voskuil K, Meier S, Leininger L, Kuo D  
Project Manager: Friedsam D  
December 2011

### **Treatment Alternatives and Diversion (TAD): Advancing Effective Diversion in Wisconsin**

Van Stelle KR, Goodrich J, Paltzer J  
Report to the Wisconsin Legislature in collaboration with the WI Office of Justice Assistance, the WI Department of Corrections, and the WI Department of Health Services  
December 2011

### **Making Wisconsin the Healthiest State Project. Wisconsin Health Trends: 2011 Progress Report**

Remington PL, Roubal AM, Booske Catlin BB, Timberlake K  
2011

## Selected Abstracts And Presentations

### **Estimates of Crowd-Out from a Public Insurance Expansion Using Administrative Data**

Dague L, DeLeire T; American Economics Association Annual Meeting, Denver CO  
January 2011

### **Honoring Our Families**

FitzGerald C, Weborg C; Administration for Native Americans Grantee Meeting, Washington, DC  
January 2011

### **How Healthy is Your Community?**

Remington P; Wisconsin Association of Family and Consumer Science, Oconomowoc, WI  
March 2011

### **Update on Wisconsin Treatment Alternatives and Diversion Program (TAD) Evaluation: What Have We Learned About TAD Drug Treatment Courts?**

Van Stelle KR; Wisconsin Association of Treatment Court Professionals, Wisconsin Rapids, WI  
April 2011

### **The Role of Recovery High Schools in the Continuum of Services**

Moberg DP; Wisconsin Association on Alcohol and Other Drug Abuse Annual Conference, Madison WI  
May 2011

### **GLITC-Honoring Our Children Project: Family Planning and Reproductive Health**

FitzGerald C, Weborg C; Interconception Care Learning Collaborative Grantee Meeting, Washington, DC  
May 2011

### **Effects of Mode and Incentives on Response Rates, Costs, and Response Quality in a Survey of Alcohol Use Among Young Adults**

Stevenson J, Dykema J, Kniss C, Black P, Moberg DP; American Association for Public Opinion Research, Phoenix AZ  
May 2011

### **Planning and Conducting Real World Evaluations of Public Health Programs and Interventions**

Cross Dunham N, FitzGerald C, Eberle N, Peterson C; Pre-conference Workshop, Wisconsin Public Health Association Conference, Appleton, WI  
May 2011

### **Community Action Programs: Key partners in improving the health of Wisconsin**

Russell A; Wisconsin Community Action Programs 2011 Annual Meeting, Madison, WI  
May 2011

### **The County Health Rankings: From Data to Action**

Willems Van Dijk J; United Way Strategic Leaders Conference, Orlando, FL  
May 2011

### **Using the County Health Rankings to Create a Culture of Healthy Living**

Russell A; Kentucky Healthy Communities Conference, Lexington, KY  
May 2011

### **Community Evaluation Toolbox**

FitzGerald C, Eberle N; Wisconsin Partnership for Physical Activity and Nutrition/Wisconsin Prevention of Obesity and Diabetes Conference, Madison, WI  
June 2011

### **Real World Evaluation of Community-Based Projects**

FitzGerald C, Hogle J; Institute for Clinical and Translational Research Regional Council, La Crosse, WI  
June 2011

### **Triple Aim and Population Health**

Kindig D; AcademyHealth Annual Research Meeting, Seattle, WA  
June 2011

### **Estimates of Crowd-Out from a Public Insurance Expansion Using Administrative Data**

Leininger L; Academy Health Annual Research Meeting, Seattle, WA  
June 2011

### **The Target Efficiency and Effectiveness of Online Medicaid/CHIP Enrollment: An Evaluation of Wisconsin's ACCESS Internet Portal**

Leininger L; Academy Health Annual Research Meeting, Seattle, WA  
June 2011

**Recovery High Schools and Adolescent Continuing Care: Program Characteristics and Empirical Findings**

Finch AJ, Moberg DP; Texas Behavioral Health Institute, Austin, TX

July 2011

**What Works? Policies and Programs to Improve Wisconsin's Health**

Booske Catlin B; *Institute of Medicine* Committee on Valuing Community-Based, Non-Clinical Prevention Programs, Washington, DC

September 2011

**Improving Women's Health and Interconception Care**

FitzGerald C, Kruse T, Weborg C; Association of Women's Health, Obstetric and Neonatal Nurses - Healthy Babies Summit, Waukesha, WI

October 2011

**County Health Rankings: Epidemiology in Action**

Remington P, Booske Catlin B, Russell A; 139<sup>th</sup> Annual Meeting of the American Public Health Association, Washington, DC

November 2011

**Politics of Partnership and Policy Interventions: Using the County Health Rankings**

Willems Van Dijk J; American Public Health Association National Conference, Washington, DC

November 2011

**The Effect of Enrolling Uninsured Poor Childless**

**Adults** into Public Insurance on the Use of Medical Care

DeLeire T; Association of Public Policy Analysis and Management, Chicago, IL

November 2011

**An Analysis of Wisconsin's ACCESS Online Application for BadgerCare Plus**

DeLeire T; Association of Public Policy Analysis and Management, Chicago, IL

November 2011

**We Need a Multi-Sectoral Business Model for Population Health Improvement**

Kindig D; Robert Wood Johnson Foundation and Federal Reserve Bank "Building Systems to Integrate Community Development and Health"

Washington, DC

November 2011

**Values and the Selection of Outcomes for Evaluating CTSAs**

Moberg DP, Hogle J, Spearman C; American Evaluation Association, San Antonio TX

November 2011

**WIPHL Interim Evaluation Findings**

Moberg DP; State Council on Alcohol and Other Drug Abuse, Madison, WI

December 2011

**Using Blogs to Enhance Teaching and Learning: From the Classroom to the Blogosphere...And Back Again**

Siemering K, Kindig D; Invited Webinar with Association of Schools of Public Health

December 2011

## Issue Briefs

**May 2011; Vol. 10, No 2****Online Applications for Medicaid and BadgerCare: How Efficient Relative to Other Application Venues?****April 2011; Vol 10, No 1****State Health Policy Series**

- ▶ Increasing Wisconsin's Beer Tax: Would It Improve the State's Health? At What Cost?
- ▶ Health Impact Assessment: Improved Policy-Making or Barrier to Economic Development?

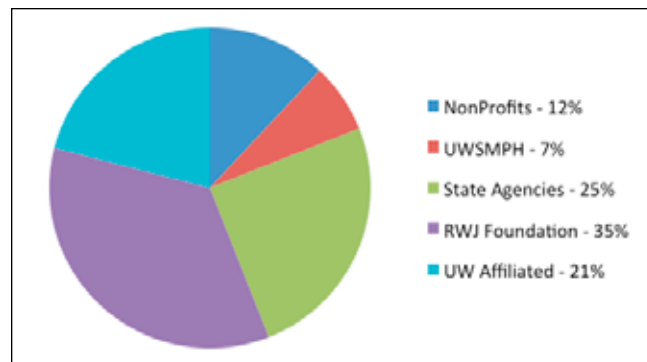
- ▶ Tractor Rollover Protective Structures (ROPS): How to Reduce Wisconsin's Farm Death and Injury
- ▶ Zoning? Supermarkets? Farms and Gardens?: Improving Access to Health Affordable Food

**eNEWS – Published Monthly**

Available at <http://uwphi.pophealth.wisc.edu/publications/eNews.htm>

## Budget

The Institute's total budget for 2011 was approximately \$4.8 million. This funding comes from a diverse mix of sources, including The Robert Wood Johnson Foundation, the Wisconsin Partnership Programs (Blue Cross/Blue Shield conversion), Wisconsin state agencies, federal agencies, core funds from the UW School of Medicine and Public Health, and several foundation and other non-profit sources. Federal funds flow to the Institute via several of these resources. The following graph summarizes funding source as percent of the Institute's total budget:



### Nonprofits - Providers, Local, Tribal & Community Organizations

#### Great Lakes Inter-Tribal Council, Inc.

- ▶ Honoring Our Children
- ▶ Honoring Our Children Community Based Doula Program
- ▶ Honoring Our Families
- ▶ Family Foundations Home Visiting Program

#### Lac Courte Oreilles Band of Lake Superior Chippewa Indians

- ▶ Mino Maajisewin Program

#### Indianhead Community Action Agency

- ▶ Strategic Prevention Framework State Incentive Grant (SPF-SIG)

#### Milwaukee County Department of Health & Human Services

- ▶ Milwaukee County Offender Reentry Project

#### Sawyer County, WI

- ▶ Sawyer County Traffic Offender Program (STOP)

#### Wisconsin Collaborative For Healthcare Quality

### UW School of Medicine & Public Health (UWSMPH)

- ▶ UWPHI Core Funding

### State Agencies

#### South Dakota Dept. of Social Services

- ▶ Strategic Prevention Framework State Incentive Grant (SPF-SIG)

#### WI Department of Corrections, Dept. of Health Services and Office of Justice Assistance

- ▶ Evaluation for the Treatment & Diversion (TAD) Programs

#### WI Department of Health Services (DHS)

- ▶ BadgerCare Plus - Phase 1
- ▶ Chronic Disease Program Integration
- ▶ Wisconsin Diabetes Quality Improvement Collaborative
- ▶ Evaluation of BadgerCare Plus
- ▶ Screening, Brief Intervention and Referral to Treatment (SBIRT)
- ▶ Mental Health Program Evaluation
- ▶ National Public Health Improvement Program
- ▶ Strategic Prevention Framework State Incentive Grant (SPF-SIG)
- ▶ Wisconsin Practice-based Research Network (WIPBRN)
- ▶ Fit Families – Supplemental Nutrition Assistance Program Education

#### WI Office of Justice Assistance

- ▶ ARRA Misdemeanor Diversion and Youthful Offender Programs

### Robert Wood Johnson (RWJ) Foundation

- ▶ Mobilizing Action Toward Community Health (MATCH)
- ▶ County Health Roadmaps

### UW Affiliated - Foundations & Programs

#### UW Partnership Program

- ▶ Evidence-Based Health Policy Project
- ▶ Evaluation of the Lifecourse Initiative for Healthy Families (LIHF)
- ▶ Healthy Wisconsin Leadership Institute
- ▶ Making Wisconsin the Healthiest State
- ▶ Wisconsin Population Health Fellowship Program
- ▶ Portage County Fit Communities
- ▶ Wisconsin Partnership for Childhood Fitness

#### UW Institute for Clinical Translational Research (ICTR)

- ▶ Disparities in Wisconsin's Diabetes Outcome
- ▶ ICTR Program Evaluation
- ▶ Health Policy Programs/Evidence-Based Health Policy Project



UNIVERSITY OF WISCONSIN

**Population Health Institute**

*Translating Research for Policy and Practice*

University of Wisconsin Population Health Institute  
Department of Population Health Sciences  
University of Wisconsin School of Medicine and Public Health  
575 WARF Building  
610 Walnut Street  
Madison, WI 53726-2336  
Phone: (608) 263-6294  
Fax: (608) 262-6404  
<http://uwphi.pophealth.wisc.edu/>