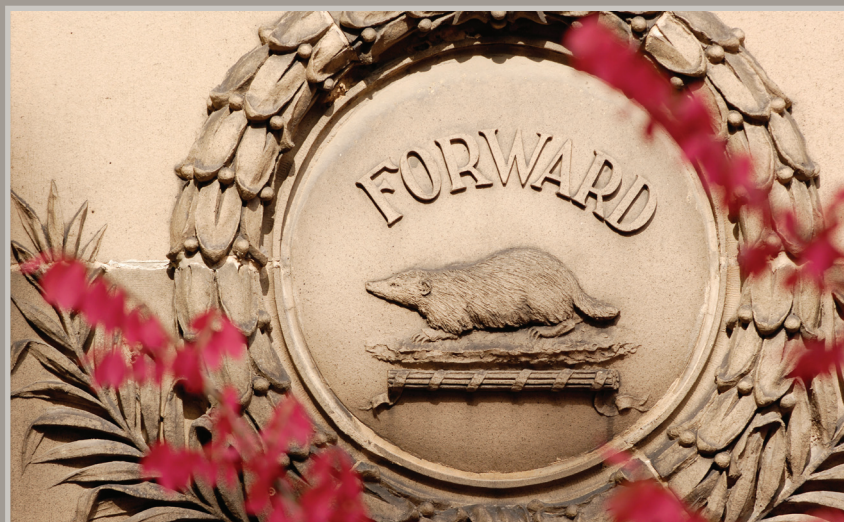

University of Wisconsin Population Health Institute

Translating Research for Policy and Practice



ANNUAL REPORT 2010



School of Medicine
and Public Health

UNIVERSITY OF WISCONSIN-MADISON

Letter from The Associate Dean



Dear Colleagues:

Since its founding in 1984, the Population Health Institute continues to serve the mission of the Wisconsin Idea - where the boundaries of the University extend to the boundaries of the State, and beyond. Our engagement with the community in public health and health services policy and practice provides a cornerstone for the University of Wisconsin School of Medicine and Public Health as we transform from a traditional medical school to a school that integrates public health throughout its teaching, research, and service missions.

Despite significant accomplishments, both here at the University of Wisconsin and elsewhere in basic, clinical, and population health research, a wide gap persists between research discoveries (i.e., what we know) and actual practice (i.e., what we do). The Population Health Institute researchers examine the process and outcomes of disseminating public health programs and policies into practice.

Highlights of our research, dissemination and service projects during 2010 include:

- Extension of the Wisconsin *County Health Rankings* to county rankings in all 50 states in the nation
- Completion of a two-year comprehensive evaluation of the BadgerCare Plus program and publication of reports on enrollment, take-up, continuity of coverage, target efficiency, and relationship to employer-sponsored insurance
- Delivery of rapid response briefings to public and private sector leaders following passage of the federal 2010 Patient Protection and Affordable Care Act
- The *Making Wisconsin the Healthiest State* project that identifies the key drivers of Wisconsin's health and summarizes evidence on the effectiveness of over 300 policies and programs
- The Evidence-Based Health Policy Project that focuses on methods to connect researchers with policy makers, and addresses a broad range of issues in health care and public health
- An evaluation research program that continues to serve as an independent evaluator for many state and local projects, using a wide range of designs including both experimental and quasi-experimental approaches to assess program effectiveness and implementation
- Applied public health training programs, including the Population Health Fellowship and the Healthy Wisconsin Leadership Institute

In July 2010, Dr. Thomas DeLeire began serving as Acting Director while the Department of Population Health Sciences conducted a national search for a permanent new director. With new leadership, the Institute will continue to build on its mission to translate research into practice in Wisconsin, and beyond.

Patrick Remington, MD, MPH
Associate Dean for Public Health
Professor, Population Health Sciences

University of Wisconsin Population Health Institute

Translating Research for Policy and Practice

Contents

Mission Statement	2
Community Advisory Board.....	3
Affiliated Faculty and Investigators.....	4
Institute Programs and Cross-Cutting Themes	5
Population Health Assessment and Community Engagement.....	6
Service Learning	7
Health Policy	8
Program Evaluation.....	9
American Indian Tribal-Academic Partnerships	10
Community Engagement	11
Executive Committee and Institute Staff	12
Conferences, Seminars, Publications, Programs	15
Budget	17



Mission Statement



UNIVERSITY OF WISCONSIN

Population Health Institute

Translating Research for Policy and Practice

The Institute serves as the bridge to public health and health policy practitioners in the State, through an active citizen advisory board, issue briefs and reports, and periodic conferences and educational programs.

It also serves as a focal point for public health and health policy within the University of Wisconsin School of Medicine and Public Health by bringing together faculty, staff, and students interested in applying their skills and experience to answer “real-world” questions.

Mission:

To translate public health and health policy research into policy and practice.

We strive to:

- Address a broad range of real-world problems of topical importance to government, business, providers and the public
 - Promote partnerships of inquiry between researchers and users of research, breaking down barriers between the academic community and public and private sector policy makers
 - Advance the development of interdisciplinary research, along the spectrum from public health to health care, at the University of Wisconsin-Madison and other academic settings in Wisconsin
- Provide outreach and continuing education for practitioners and opportunities for applied learning for MPH, medical, graduate, and other health professions students
 - Contribute to public health and health care practice and policy decisions that improve Wisconsin’s population health
 - Maintain the highest level of relevance, rigor, and objectivity



Community Advisory Board

The Institute is guided by a 17-member Community Advisory Board, with members from the health care, public health, business, and voluntary sectors, as well as leaders from Wisconsin's legislature. The Board meets two to three times per year to guide the work of the Institute and provide feedback on its programs and publications.

Advisory Board Members in 2010

Bevan Baker

Commissioner
City of Milwaukee Health Department

Rep. Charles Benedict

Representative
Wisconsin State Assembly

Steve Brenton

President
Wisconsin Hospital Association

Cheryl DeMars

CEO
The Alliance

Kurt Eggebrecht

Health Officer
Appleton City Health Department

Curt Gielow

Executive Dean
Concordia University School of
Pharmacy

Sheri Johnson

Assistant Professor of Pediatrics
Medical College of Wisconsin

Gregory Nycz

Director
Family Health Center of Marshfield

Rep. Sandy Pasch

Representative
Wisconsin State Assembly

Christopher Queram

President and Chief Executive Officer
Wisconsin Collaborative for Healthcare
Quality

David R. Riemer

Director
Public Policy Institute

Peggy Rosenzweig

Former UW Regent and Legislator

Ayaz Samadani

Family Physician
Dean/St Mary Regional Clinic

Tim Size

Executive Director
Rural Wisconsin Health Cooperative

Dick Tillmar

Owner
Tillmar Connect, LLC

Karen Timberlake

Secretary
Wisconsin Department of Health
Services

Susan Turney

Chief Executive Officer
Wisconsin Medical Society

The Population Health Institute's initiatives are at the cutting edge of a statewide awakening to the profound importance of improving individual and community health as a necessary strategy to build a better Wisconsin. Serving on the Institute's Advisory Board has been a rewarding opportunity to help shape the type of policy that will help advance and improve access and health outcomes.



Steve Brenton, President
Wisconsin Hospital Association



Affiliated Faculty and Investigators



Aaron Carrel, MD
Department of Pediatrics



Thomas DeLeire, PhD
Associate Professor of Public Affairs, Population Health Science, and Economics; Director, La Follette School of Public Affairs; Interim Director, Population Health Institute; Faculty Director, Health Policy Group



Jonathan Jaffery, MD
Chief Medical Officer
Wisconsin Department of Health Services, Division of Health Care Access and Accountability



Thomas J. Kaplan, PhD
Senior Scientist
Institute for Research on Poverty



David Kindig, MD, PhD
Emeritus Professor
Population Health Sciences
Emeritus Vice-Chancellor, Health Sciences
Senior Advisor, Population Health Institute



Lindsey Leininger, PhD
Postdoctoral Fellow
Population Health Sciences



D. Paul Moberg, PhD
Research Professor
School of Medicine and Public Health
Director for Evaluation, Institute for Clinical Translational Research



John Mullahy, PhD
Economist
Population Health Sciences
Professor, La Follette School of Public Affairs; Co-Director, Robert Wood Johnson Foundation



Tom Oliver, PhD, MHA
Professor
Population Health Sciences
Director, UW Master of Public Health Program



Paul Peppard, PhD
Assistant Professor
Population Health Sciences



Patrick Remington, MD, MPH
Associate Dean for Public Health
Professor, Population Health Sciences; Affiliate Professor, Family Medicine



Barbara Wolfe, PhD
Professor, Economics
Population Health Sciences; Professor, La Follette School of Public Affairs



Susan Zahner, DrPH, RN
Associate Professor
School of Nursing



Institute Programs and Cross-Cutting Themes

The Institute is led by nationally-recognized leaders in applied public health and health policy research. Our progress during 2010 could not have been achieved without the ongoing contributions from members of our Community Advisory Board and support from the University of Wisconsin School of Medicine and Public Health and the Wisconsin Partnership Program.

Programs of the Institute

Population Health Assessment & Community Engagement: Monitors and assesses the major components of population health: health outcomes, health determinants and programs and policies. Under the Education and Training portion of this program, they connect the Institute to the public health and health care community in the state through seminars, conferences, training programs, and an active website.

Health Policy: Engages in research, consulting, and analysis in partnership with Wisconsin's leading public and private sector policy makers in health and health care, focusing especially on cost, financing, access, and health system performance.

Program Evaluation: Conducts evaluation projects in many areas of public health, including substance abuse prevention and treatment, maternal and child health, school health promotion and related areas.

Cross-Cutting Themes

Service Learning: Serves as a population health 'laboratory' for learning, where graduate students and fellows apply their skills to real-world issues.

American Indian Tribal-Academic Partnerships: Builds and maintains research evaluation and service initiatives with Wisconsin's American Indian communities and the Great Lakes Inter-Tribal Council (GLITC)

Community Engagement: The Institute fosters strong partnerships between the University of Wisconsin and population health practitioners and policy makers through all of its programs.

Evidence-Based Practice: The Institute seeks to evaluate and disseminate evidence-based policies practices through its programs.

Population Health Assessment and Community Engagement



Making Wisconsin the Healthiest State

At the close of 2010, we published the second *Health of Wisconsin Report Card*. During the year, in addition to making continuing updates, we also began working on a complete overhaul of the *What Works? Policies and Programs to Improve Wisconsin's Health* database, available at <http://WhatWorksForHealth.wisc.edu>. This database was used by many of the applicants to the Wisconsin Partnership Programs' Community-Academic Partnership grant program as well as others across the state to identify effective policies and programs.



Bridget Booske, PhD, Program Director

Description: The Population Health Assessment and Community Engagement (PHACE) group monitors health and health disparities in communities; reviews evidence on policies and programs to inform health policy, program planning, and evaluation; disseminates information in user-friendly formats to motivate action toward community health improvement; and engages with communities in their efforts to improve community health. The program provides opportunities for population health graduate and MPH students to engage in the analysis, interpretation, and communication of health data to Wisconsin's public health and health policy community and offers seminars, conferences, and applied training and continuing education programs to community and public health practitioners.

Primary Partners: National, state and local public health organizations and policy makers. A diversity of organization and individuals from non-profit academic, governmental, business and local public health sectors working to improve the health of the State of Wisconsin.

Major Projects

- *Mobilizing Action Toward Community Health (MATCH)* and the *County Health Rankings*
- *Making Wisconsin the Healthiest State*
- Healthy Wisconsin Leadership Institute
- Population Health Service Fellowship Program
- First Monday Seminar Series

Mobilizing Action Toward Community Health (MATCH)

The MATCH project is a major project that began on January 1, 2009 with funding from the Robert Wood Johnson Foundation. The goals of the project are to:

- Create a call to action by publishing *County Health Rankings* in every state
- Engage policy makers and other community leaders from multiple sectors in partnerships to improve population health
- Develop incentive models to stimulate multi-sectoral action toward community health improvement

On February 17, 2010, we released the first *County Health Rankings* for all 50 states via a comprehensive new website www.CountyHealthRankings.org. The website received over a quarter million visits during its first week of operation and stories appeared in over 800 media print outlets. At the close of the year, the Robert Wood Johnson Foundation awarded us a planning grant to begin development of a new "Action" initiative that will build on our work with the *County Health Rankings*. We also published a series of articles based on commissioned essays on population health metrics, partnerships and incentives in the July, September and December issues of *Preventing Chronic Disease*.



Service Learning

HEALTHY WISCONSIN LEADERSHIP INSTITUTE

Healthy Wisconsin Leadership Institute www.hwli.org

The year-long Community Teams Program for 5 to 9 teams focuses on building public health and collaborative leadership skills as they work to address a priority health issue in their community. A cohort of 5 community teams graduated from the program in September 2010. The fourth cohort (2010-2011) includes a record 9 teams representing community health initiatives in Brown, Calumet, Chippewa, Eau Claire, Green Lake, Milwaukee (2), Polk and Winnebago counties. The teams are addressing health issues from cancer to substance abuse and physical activity and nutrition.

Wisconsin Population Health Service Fellowship



Wisconsin Population Health Service Fellowship Program

This two-year fellowship program provides recent masters level graduates with service and training opportunities in community based, non-profit, governmental and health service organizations. The primary goal of the Fellowship Program is to develop the next generation of public health practitioners skilled in planning, implementation, and evaluation of public health programs.

Description: Each of the Institute's programs provides students and fellows the opportunity to "learn while doing." This focus on service learning adds to coursework that students take in the Population Health MS/PhD program, or in the applied coursework offered as part of the Master of Public Health (MPH) program. The Institute serves as a population health 'laboratory' for learning, where students apply

their skills to real-world issues and, in turn, have an opportunity to publish results as issue briefs, in the Wisconsin Medical Journal, or in named publications.

Primary Partners: State and local health and health care leaders who provide service learning opportunities for students working in the Institute, or for fellows in the Wisconsin Population Health Fellowship program.

2010 Population Health Practice Fellows

- Sara Soka
- Marisa Stanley
- Raisa Koltun
- Katarina Grande
- Katherine Vaughn-Jehring
- Paula Tran Inzieo
- Kelli Truszynski

2010 Graduate Student Assistants across the Institute

- Penny Black
- John Bowser
- Sara Busarow
- Erika Cheng
- Laura Dague
- Kristin Gallagher
- Lael Grigg
- Colleen Moran
- Julie Halverson
- Emma Hynes
- Karen Odegaard
- Clare O'Connor
- Hyojun Park
- Jason Paltzer
- Matt Rodock
- Anne Roubal
- Lillian Shields
- Julie Woulfe



Health Policy

Evidence-Based Health Policy Project (EBHPP)

The EBHPP, a partnership with the La Follette School of Public Affairs and the Wisconsin Legislative Council, connects lawmakers and researchers, along with public and private sector decision leaders to advance Wisconsin's health.

- Provides policy makers, in both the public and private sectors, with timely, nonpartisan, high-quality information for evidence-based decision making; and increases involvement of University of Wisconsin research and teaching activities in topical issues of state public policy.
- Designated as a core community engagement component of the University of Wisconsin School of Medicine and Public Health Institute for Clinical and Translational Research - Community Academic Partnership (ICTR-CAP)



Donna Friedsam, MPH, Program Director

Description: The Institute's health policy programs connect the University of Wisconsin School of Medicine and Public Health to Wisconsin's leading public and private sector policy makers in the public health and health care arenas, with particular focus on cost, financing, access, coverage and on health system performance. Evidence and analyses are communicated through issue briefs, consultancies, briefings, forums, symposia, and collaborative research.

Primary Partners: Legislators and their aides, executive agency leadership and their staff, health care provider purchasing payer organizations, and provider associations.

Highlights from 2010 include the following:

- Completed a multi-faceted evaluation of BadgerCare Plus, in partnership with the Wisconsin Department of Health Services. Published reports, issue briefs, and peer-reviewed articles on enrollment and continuity, affordability, take-up and the impact on private employer-sponsored health insurance.
- Extended the BadgerCare Plus evaluation to the Core Plan for adults without dependent children (childless adults) and expanded the analysis to health care utilization trends and health outcomes, with support from the federal Health Resources and Services Administration (HRSA).
- Produced rapid response programming, through the Evidence-Based Health Policy Project, following passage of the federal 2010 Patient Protection and Affordable Care Act.
- Delivered briefings focusing on provider scope of practice laws and regulation, and on the emerging Accountable Care Organization model.
- Mentored two La Follette and two MPH graduate students as project assistants, and engaged two economics doctoral students on BadgerCare research.
- Initiated a study of Black-White racial disparities in health care outcomes, focusing specifically on diabetes care and outcomes, in collaboration with the Wisconsin Collaborative for Healthcare Quality.
- Launched an exploratory study of the potential uses of emerging data from the Wisconsin Health Information Organization (WHIO) – Wisconsin's all-payer claims database.
- Served on several government and industry committees including Wisconsin BadgerCare Plus Advisory Committee, Wisconsin Collaborative for Health Care Quality Aligning Forces for Quality Initiative, the Wisconsin Health Information Organization data users group, and the Wisconsin Hospital Association Quality Steering Committee.



Program Evaluation



D. Paul Moberg, PhD, Program Director

The Program Evaluation group was involved in over 20 actively-funded projects during 2010. These projects cut across many areas of population health and used a diversity of approaches. The primary areas of focus are substance abuse, prevention and treatment, and health promotion.

Projects included:

- Substance Abuse and Mental Health Services Administration (SAMHSA) funded state projects—the Strategic Prevention Framework State Incentives Grants (SPF-SIG) in Wisconsin and South Dakota and Wisconsin’s Screening, Brief Intervention, and Referral to Treatment (SBIRT) project;
- Evaluation of correctional programs providing treatment alternatives for offenders with substance abuse problems;
- A National Institute on Drug Abuse funded study of Recovery Schools for high school students with substance use disorders;

- School-based programs to increase physical activity among children, funded by the Centers for Disease Control and Prevention (CDC) and Wisconsin Partnership Program; and
- Evaluation of child obesity prevention through the Fit Families program in Wisconsin Women, Infants and Children (WIC) settings in six counties.

Another area is evaluation of programs targeting populations experiencing health disparities. These include Native American health, partnering with GLITC, and programs targeting African American and Latino health, partnering with the WI Division of Public Health. We are also working with partners to evaluate statewide mental health programs, physical activity and fitness programs in schools and diabetes quality improvement.

Description: This unit conducts evaluations of programs in public health and human services. The evaluation group also maintains directly-funded evaluation research projects, rigorously evaluating innovative programs using experimental and quasi-experimental designs.

Primary Partners: Community, tribal and State governmental organizations and collaboration with other University of Wisconsin researchers and practitioners.

Examples of the services provided:

- Designing and implementing comprehensive program evaluations
- Developing a wide range of evaluation designs and needs assessments
- Developing data collection methods and survey instruments
- Monitoring program services (e.g., measuring progress in reaching program objectives)
- Conducting qualitative research, including content analysis, intensive interviews, focus groups and site visits and statistical analysis of data from surveys and program-specific data sets
- Conducting rigorous evaluation research in many areas of public health and human services



American Indian Tribal-Academic Partnerships



Great Lakes Native American Research Center for Health

The Institute works with the Great Lakes Inter-Tribal Council and Wisconsin's tribal and urban Indian clinics through Great Lakes Native American Research Center for Health, supported by the National Institutes of Health and Indian Health Service. A joint Memorandum of Understanding governs the relationship between the University of Wisconsin School of Medicine and Public Health and our American Indian partner communities; based on collaboration, tribal self-determination, and respect for tribal sovereignty.

Institute staff members build and maintain research and service initiatives with Wisconsin's American Indian communities and the Great Lakes Native American Research Center for Health. The Institute provides technical assistance, training, and evaluation services for programs that address maternal and child health, and the delivery of health care services. A student development component aims toward bringing American Indian youth into the sciences and health professions.



The following projects were ongoing in 2010

- Continued to participate in the University of Wisconsin Native American Health Work Group
- Represented the University of Wisconsin School of Medicine and Public Health in the Native American Research Center for Health (NARCH) partnership with the Great Lakes Inter-Tribal Council (GLITC)
- Collaborated with GLITC in developing grant proposals for several public health programs
- Continued the evaluation of GLITC's Honoring Our Children project, ongoing since 1998, and the related Honoring Our Families, Urban/Rural Outreach, and Doula projects
- Supported the Collaborative Center for Health Equity in the 5th Annual Indigenous Health and Wellness Day, with over 150 American Indian student participants from around the state



Community Engagement



Community Teams Alumni Panel

The “Wisconsin Idea” envisions close working relationships throughout the State of Wisconsin, such that “the beneficent influence of the University reaches every family in the State.” Institute staff members regularly engage with colleagues and partners in programs, applied research, program evaluation, committees, consulting, proposal development and other activities. These partnerships, some funded, some in-kind, and some simply collegial, include entities in the public and private sector as well as in other departments and centers within the University. Institute participation may be based on grants and contracts, in-kind commitments, or collegiality. The list provides a selected view of the myriad organizations with which Institute staff collaborated and/or consulted in 2010.

Public/Governmental Agencies

- Wisconsin Department of Health Services
- Wisconsin Legislative Council
- Wisconsin Department of Corrections
- Wisconsin Department of Public Instruction
- Wisconsin Department of Employee Trust Funds
- National Institute on Drug Abuse
- Centers for Disease Control and Prevention
- Wisconsin Office of Justice Assistance
- Substance Abuse and Mental Health Services Administration

Private and Not-for-Profit Agencies

- Alliance Employer Health Care Cooperative and Alliance Foundation
- Aurora Health Care, Inc.
- Great Lakes Inter-Tribal Council
- Medical College of Wisconsin
- The Robert Wood Johnson Foundation
- United Way of Dane County
- University of Wisconsin Medical Foundation
- Wisconsin Education Association
- Wisconsin Hospital Association
- Wisconsin Medical Society
- Wisconsin Nursing Association
- Intertribal Council of Michigan
- Wisconsin Association of Drug Court Professionals
- Wisconsin Collaborative for Healthcare Quality
- Wisconsin Council on Children and Families
- Women, Infants and Children Association



Executive Committee and Institute Staff



Gordon T. Ridley
Senior Associate Dean for Administration
and Finance, Associate Vice Chancellor for
Medical Affairs

The Population Health Institute supports the mission of our newly integrated School of Medicine and Public Health by translating public health and health policy into practice. We consider our work as the most recent embodiment of the Wisconsin Idea by working with government and community toward a healthier Wisconsin. We merge the burgeoning body of public health knowledge with the realities of behavior, culture, resources and institutional interests to create strategies that make a difference in the health of our citizens across the full spectrum of our society.

The Executive Committee provides guidance to the Director on the performance of the Institute, reviewing goals and objectives and evaluating accomplishments through this annual report.

Executive Committee

Gordon T. Ridley, Chair
Senior Associate Dean
UW Administration and Finance

Patrick Remington
Associate Dean for Public Health
Professor, Population Health Sciences,
UW School of Medicine and Public
Health

F. Javier Nieto
Chair, UW Department of Population
Health Sciences; Professor, Population
Health Sciences and Family Medicine,
UW School of Medicine and Public
Health

Alexandra K. Adams
Associate Professor, Department of
Medicine, UW School of Medicine and
Public Health

Ron Cisler
Director, Center for
Urban Population Health

Tim Corden
Associate Professor of Pediatrics
Critical Care, Medical College of
Wisconsin
Children's Hospital of Wisconsin
Associate Professor of Pediatrics -
Critical Care, Co-Director, Policy Core
— Injury Research Center
Medical College of Wisconsin
Children's Hospital of Wisconsin

Tom DeLeire
Associate Professor of Public Affairs
Interim Director, Population Health
Institute; UW School of Medicine and
Public Health

Susan Goelzer
Professor, Department of
Anesthesiology, UW School of
Medicine and Public Health
Senior Medical Director, Graduate
Medical Education, University of
Wisconsin Hospital & Clinics

Tom Oliver
Professor, Population Health Sciences,
UW School of Medicine and Public
Health

Maureen A. Smith
Associate Professor, Departments of
Population Health Sciences,
Surgery, and Family Medicine
Director, Health Innovation Program
UW School of Medicine and Public
Health

Barbara (Bobbi) Wolfe
Professor, Departments of Population
Health Sciences, Economics and
La Follette School of Public Affairs
UW School of Medicine and Public
Health

Susan Zahner
Associate Professor, School of
Nursing, UW School of Medicine and
Public Health



Institute Staff In 2010

Kelly Anderson
Grants & Contract Manager

Jessica Athens, MS
Associate Researcher

Alison Bergum, MPA
Associate Researcher

Bridget Booske, PhD, MHSA
Senior Scientist
Program Director, PHACE Group

Jennifer Buechner, BS
Research Specialist

Marion Ceraso, MHS, MA
Director, Education and Training

Colleen Comeau, AAS
University Services Associate II

Tim Connor, MS, MA
Associate Researcher

Tom DeLeire, PhD
Associate Professor and
Interim Director; Faculty Director,
Health Policy

Nancy Eberle, MPH
Assistant Researcher

Liz Feder, PhD
Associate Researcher

Charlanne FitzGerald, MPH
Researcher

Donna Friedsam, MPH
Researcher
Programs Director, Health Policy

Janae Goodrich, BA
Research Specialist

Carissa Gottlieb, MS
Assistant Researcher

Anna Graupner, MPH
Assistant Researcher

Barbara Hill, MSSW
Researcher

Nathan Jones, PhD, Researcher
UW Comprehensive Cancer Center

Amanda Jovaag, MS
Associate Researcher

David Kindig, MD, PhD
Senior Advisor

Kate Konkle, MPH
Outreach Specialist

Daphne Kuo, PhD
Assistant Scientist

Robin Lecoanet, JD
Associate Researcher

Sarah Linnan, BS
Research Specialist

D. Paul Moberg, PhD
Senior Scientist and
Research Professor; Faculty and
Program Director, Evaluation
Research

Christine Niemuth, BA
Research Specialist

Tom Oliver, PhD
Associate Professor

Doug Piper, PhD
Senior Scientist

Seth Prins, MPH
Associate Researcher

Patrick Remington MD, MPH
Associate Dean for Public Health
Faculty Director, PHACE Group

Kirstin Siemering, DrPH, RD
Researcher

Kit Van Stelle, MA
Researcher

Rick Volund, PhD, MA
Associate Researcher

Kristen Voskuil, MA
Associate Researcher

Julie Willems Van Dijk, PhD, RN
Associate Scientist

Lesley Wolf
University Services Associate II

Institute Graduate Students

Jonathan Alfuth

Penny Black

John Bowser

Sara Busarow

Erika Cheng

Ivan Cherniack

Laura Dague

Kristen Gallagher

Lael Grigg

Colleen Moran

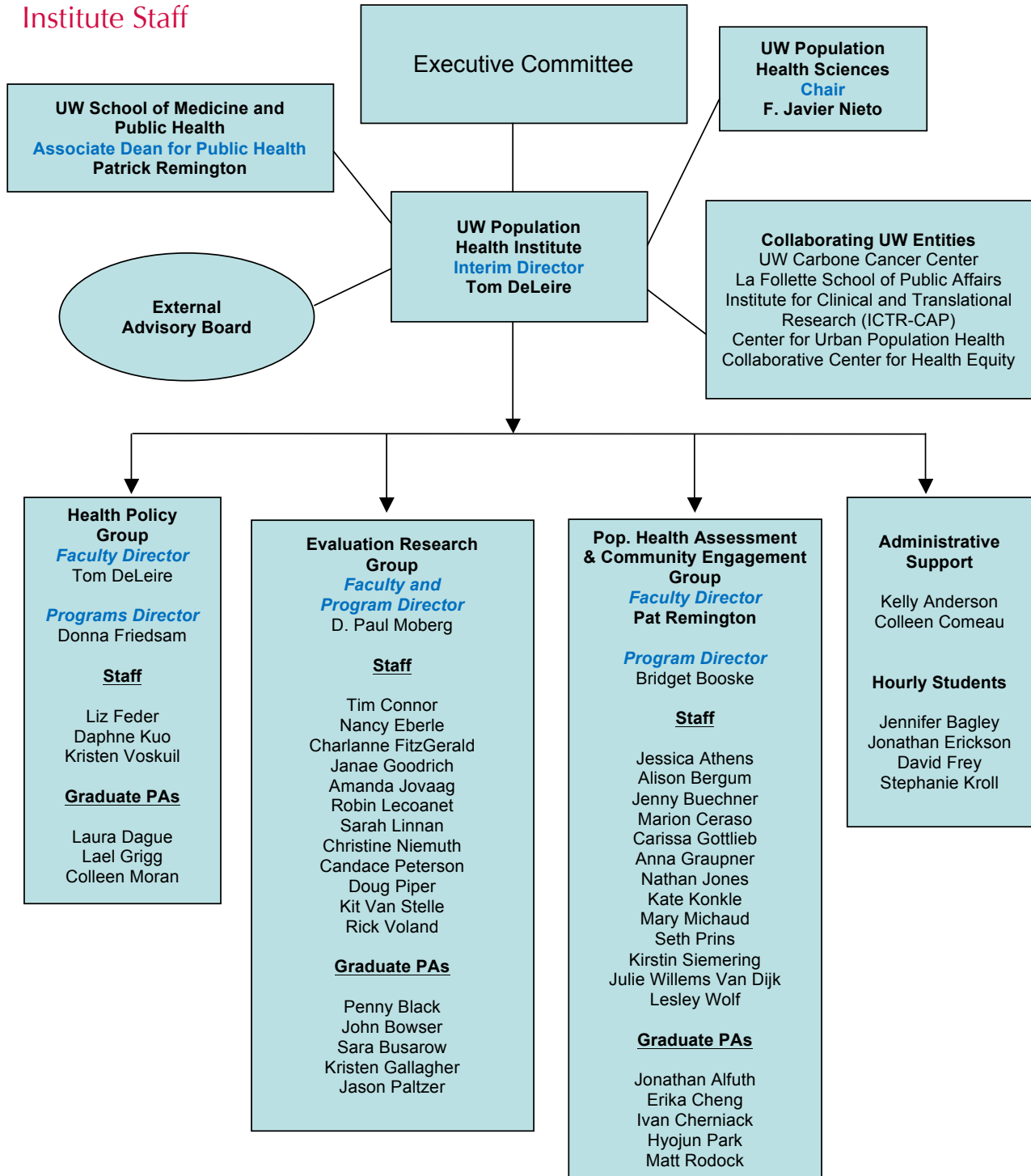
Jason Paltzer

Hyojun Park

Matt Rodock



Institute Staff





Conferences, Seminars, Publications, Programs

Institute-Sponsored Seminars

February 1, 2010

Climate Change and Health: Why Energy Policy Decisions Could be our Largest Population Health Intervention this Century

Jonathan Patz, MD, MPH, Professor and Director, Global Environmental Health and Population Health Sciences, Nelson Institute Center for Sustainability and the Global Environment (SAGE), University of Wisconsin

March 1, 2010

Covering Health Care Reform

Guy Boulton, Reporter, Milwaukee Journal Sentinel

April 5, 2010

It Takes More than Willpower: Supporting Americans' Efforts to Eat Well and Watch Their Weight

Margot Wootan, D.Sc., Director of Nutrition Policy, Center for Science in the Public Interest (CSPI), Washington, DC

May 3, 2010

Blogging, the Quintessential Health 2.0 Technology

Edward A. Miller, PhD, MPA, Associate Professor of Gerontology and Public Policy, and Fellow, Gerontology Institute, University of Massachusetts, Boston

October 4, 2010

Welfare Reform and the Race to the Bottom in Low-Wage Labor Markets: Implications for Public Health

Jane Collins, PhD, University of Wisconsin-Madison Evjue Bascom Professor of Community & Environmental Sociology and Gender & Women's Studies.

November 1, 2010

Framing Food and Fitness

Moira O'Neill, PhD, Senior Researcher, The Frameworks Institute

December 6, 2010

The Wisconsin Public Health Practice Based Research Network

Susan Zahner, DrPH, RN, Associate Professor, University of Wisconsin-Madison School of Nursing.

Healthy Wisconsin Leadership Programs

Fourth Street Forum: Fundamentals of Direct Action Organizing and Understanding Relations of Power, Local Community Strategy Exercises and the Principles of Recruitment Retention and Messaging
Judy Hertz, Midwest Academy

February 2010

Fundamentals of Direct Action Organizing and Understanding Relations of Power, Local Community Strategy Exercises and the Principles of Recruitment Retention and Messaging
Judy Hertz, Midwest Academy

March 2010

WPHA Pre-Conference Workshop: Honoring Our Common Differences: Creating Inclusive Organizations
Kathy Germann, UW-Madison Division of Continuing Studies

May 2010

Featured Keynote, Wisconsin State Prevention Conference: The Power of Collaborative Solutions
Tom Wolff, PhD, Tom Wolff and Associates

June 2010

Sharing Power and Influence in Coalitions
Tom Wolff, PhD, Tom Wolff and Associates

June 2010

Capitol Briefings and Forums by the Evidence-Based Health Policy Project

February 25, 2010

Accountable Care Organizations: New Model for Health Care Payment and Delivery. How will they work? Can they promote quality and reduce costs?

Dr. Elliott Fisher, Director of Population Health and Policy at The Dartmouth Institute for Health Policy and Clinical Practice
Dartmouth Medical School

March 3, 2010

Scope of Practice: Who Should Do What to Assure High Quality, Efficient Health Care . . . And How Can States Decide?

Speakers: Dr. Ned Calonge, Interim Director of Colorado Department of Public Health and Environment, and Chair of Governor Ritter's Collaborative Scopes of Care Task Force

Catherine Dower, J.D., Associate Director of Research, Center for the Health Professions, University of California, San Francisco

Cindy Greenlaw Benton, Minnesota Health Occupations Review Program

April 12, 2010

Federal Health Care Legislation: What Do Wisconsin Policymakers Do Now?

Moderator: David Kindig, Emeritus Professor, UW School of Medicine and Public Health

Speakers: Joy Johnson Wilson, National Conference of State Legislatures (NCSL)

Andy Webber, National Business Coalition on Health

Kathy Witgert, National Academy for State Health Policy (NASHP)

Update on Wisconsin's Implementation Plans:
Karen Timberlake, Secretary, Wisconsin Department of Health Services

Responses: David Newby, President, Wisconsin AFL-CIO

Patricia McManus, President/CEO, Black Health Coalition of Wisconsin

Larry Zaroni, Executive Director, Group Health Cooperative of South-Central Wisconsin

Remarks: Senator Jon Erpenbach

Representative Kitty Rhoades

May 27, 2010

Health Insurance Exchanges: Goals, Options, and Considerations for Wisconsin.

Rick Curtis, President, Institute for Health Policy Solutions

Conferences, Seminars, Publications, Programs



Peer Reviewed Publications

Kindig DA, Booske BC, Remington PL. Mobilizing Action Toward Community Health (MATCH): Metrics, incentives, and partnerships for population health. *Prev Chronic Dis* 7(4), 2010
http://www.cdc.gov/pcd/issues/2010/jul/10_0019.htm

Kindig DA, Peppard PE, Booske BC. How Healthy Could a State Be? *Public Health Reports* 125(2):160-167, 2010

Booske BC, Rohan AM, Kindig DA, Remington PL. Grading and Reporting Health and Health Disparities. *Prev Chronic Dis* 7(1): A16, 2010

Selected Abstracts and Presentations

Using the New County Health Rankings to Improve Community Health. Julie Willems Van Dijk; Association of Community Health Improvement National Conference, Jacksonville, FL
March 5, 2010

The County Health Rankings: Epidemiology in Action. Patrick L. Remington; Alexander D. Langmuir Memorial Lecture, Atlanta, GA
April 2010.

Recovery High Schools to Support Adolescents Recovering from Substance Abuse: Studying Feasibility and Effectiveness. D. Paul Moberg; University of Wisconsin Institute for Clinical and Translational Research (ICTR) Research Learning Series, Madison, WI
April 28, 2010.

Adolescent Recovery Schools: Translational Research Potential for NIDA-CTSA Collaboration. D. Paul Moberg; NCCR-NIDA Joint Meeting, Invited Round Table, Bethesda, MD
May 26, 2010

County Health Rankings: Mobilizing Action Toward Community Health. Bridget C. Booske; Academy Health Annual Research Meeting
June 2010

What Works? Policies and Programs to Improve Wisconsin's Health. Bridget C. Booske, Julie Willems Van Dijk; Wisconsin Prevention Conference, Wisconsin Dells, WI
June 2010.

Research on Recovery High Schools: Empirical Findings and Proposed Future Studies. D. Paul Moberg and Andrew J. Finch (Peabody College at Vanderbilt University); College on Problems of Drug Dependence, Scottsdale, AZ.
June 14, 2010

Getting Parents Enrolled in Medicaid: Lessons from Wisconsin's BadgerCare Plus Auto-Enrollment Process. Thomas DeLeire, Lindsey Leininger, Laura Dague, Shannon Mok, and Donna Friedsam; Academy Health Annual Research Meeting, Boston MA
June 29, 2010

Recovery High School Essential Practices: Current Data and Future Directions. D. Paul Moberg and Andrew J. Finch (Peabody College at Vanderbilt University); Association of Recovery Schools Annual Meeting, Northeastern University, Boston, MA
July 21, 2010

Metrics for "Getting Real" about Population Health Improvement. David A. Kindig; National Health Policy Forum, Washington, DC
September 2010.

What is Program Evaluation (or Quality Improvement) and When Does It Become "Research"? D. Paul Moberg; School of Nursing Research Colloquia, University of Wisconsin, Madison, WI
September 8, 2010

Recovery High Schools. D. Paul Moberg; Invited Presentation, Expert Meeting on Recovery for Youth with Substance Use and Co-occurring Mental Health Disorders in Educational Settings. Sponsored by federal agencies including Office of National Drug Control Policy (ONDCP), Department of Education (DOE), National Institute on Drug Abuse (NIDA), Substance Abuse and Mental Health Services Administration (SAMHSA) and the National Institute on Alcohol Abuse and Alcoholism (NIAAA), Washington, D.C.
September, 15, 2010

Recovery High Schools to Support Adolescents Recovering from Substance Abuse: Studying Feasibility and Effectiveness. D. Paul Moberg; University of Wisconsin-Madison School of Education Interdisciplinary Training Project in Education, Madison, WI
September 17, 2010

Estimating Crowd-Out from a Public Insurance Expansion Using Administrative Data Laura Dague and Thomas DeLeire; Annual Health Economics Conference, Lehigh University, Bethlehem, PA
October 15, 2010.

External Advisory Committee Recommendations Incorporating into Utilization-Focused Evaluation. Janice A. Hogle, D. Paul Moberg, PhD, Christina Spearman (UW-Madison) and Jennifer L. Bufford (Marshfield Clinic); American Evaluation Association, San Antonio, TX
November 10, 2010

CTSA Evaluation Key Function Committee Meeting, Rockville, MD
December 8, 2010

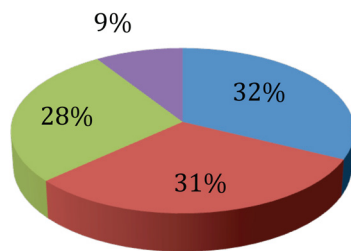
Recovery High Schools and the Continuum of Care: Empirical Findings. D. Paul Moberg; Joint Meeting on Adolescent Treatment Effectiveness, Baltimore, MD
December 15, 2020

eNEWS available at
<http://uwphi.pophealth.wisc.edu/publications/eNews.htm>



Budget

During 2010 the Institute had a total budget of approximately \$4.8 million. This funding was from a diverse mix of sources, including the Robert Wood Johnson Foundation, the Wisconsin Partnership Programs (Blue Cross/Blue Shield conversion), Wisconsin state agencies, federal agencies, core funds from the University of Wisconsin School of Medicine and Public Health, and several foundation and other non-profit sources. The following graph summarizes funding source as percent of total:



- RWJ
- State Agencies
- UWSPMH
- Foundations & NonProfit

Robert Wood Johnson Foundation (RWJF) \$1,576,000

- Mobilizing Action Toward Community Health (MATCH)
- Catalysts for Action Toward Community Health (CATCH)
- BadgerCare Plus Evaluation
- Simulation Tool for Social Determinants of Health

State Agencies (including federal pass-through)

Wisconsin Department of Health Services, Division of Public Health (\$753,300)

- BadgerCare Plus Evaluation
- ARRA Prevention and Wellness Active Schools Program
- Service Integration for Chronic Disease
- System-Based Diabetes Prevention and Control Program

Wisconsin Department of Health Services, Division of Mental Health (\$647,300)

- Strategic Prevention Framework State Incentives Grant Evaluation
- Screening, Brief Intervention Referral and Treatment (WIPHL) Evaluation
- Mental Health Program Evaluation Services

Wisconsin Department of Corrections (\$77,500)

- Treatment and Diversion Program Evaluation
- Study of Offender Revocation

Wisconsin Department of Public Instruction (\$3,800)

- Youth Risk Behavior Survey Analysis

UW School of Medicine and Public Health

Core SMPH Funds (\$345,000)

- Wisconsin County Health Rankings
- Issue Briefs and eNews
- Conferences and Seminars
- Native American Health Working Group

Wisconsin Partnership Programs (\$1,000,000)

- Population Health Fellowship Program
- Healthy Wisconsin Leadership Institute
- Making Wisconsin the Healthiest State
- Evidence Based Health Policy Program
- What Works: Reducing Health Disparities
- Lifecourse Initiative for Healthy Families Evaluation
- FIT WIC/FIT Families
- Honoring Our Children Urban/Rural Project
- Symposium on New Governance

University of Wisconsin Institute for Clinical Translational Research (ICTR) (\$37,000)

- Using Emerging WHIO All-Payer Claims Data to Understand Health
- ICTR Evaluation
- Evidence-Based Health Policy Project

Foundations and other Nonprofit Sources

Great Lakes InterTribal Council (\$73,000)

- Honoring Our Families Evaluation
- Honoring Our Children—Healthy Start Evaluation
- Honoring Our Children—Community Based Doula Evaluation

South Dakota Department of Human Services (\$241,100)

- Strategic Prevention Framework State Incentives Grant Evaluation

Milwaukee County Department of Health and Human Services (\$60,600)

- Milwaukee County Reentry Program Evaluation

Wisconsin Collaborative for Healthcare Quality (\$48,800)

- Aligning Forces for Quality: Analysis of Health Disparities
- LaCrosse County, WI (\$15,500)
- Fit Families Program Evaluation

Sawyer County, WI (\$10,000)

- Evaluation of Sawyer County Drug Court



UNIVERSITY OF WISCONSIN

Population Health Institute

Translating Research for Policy and Practice

**POPULATION
Health Sciences**



University of Wisconsin
M A D I S O N

Contact Information

University of Wisconsin Population Health Institute
Department of Population Health Sciences
University of Wisconsin School of Medicine and Public Health
528 WARF Building
610 Walnut Street
Madison, WI 53726-2336

Phone: (608) 263-6294

Fax: (608) 262-6404

<http://uwphi.pophealth.wisc.edu/>