



Annual Report 2017



Contents

- 3 Letter from Robert N. Golden, MD
- 3 Letter from Sheri Johnson, PhD
- 4 Mission Statement
- 5 Community Advisory Board
- 6 Executive Committee
- 7 Affiliated Faculty Investigators
- 9 Institute Programs and Cross-Cutting Themes
- 10 County Health Rankings & Roadmaps
- 11 Evaluation Research
- 12 Health Policy
- 13 Mobilizing Action Toward Community Health
- 16 Service Learning
 - 16 Wisconsin Population Health Service Fellowship
- 18 Community Engagement
- 20 Healthy Wisconsin Leadership Institute
- 22 Evidence-Based Practice
 - 22 Evidence-Based Health Policy Project
 - 22 What Works for Health
- 23 Capitol Briefings by the Evidence-Based Health Policy Project & Trainings
- 24 Publications, Reports and Seminars
- 25 Selected Abstracts and Presentations
- 28 Media Feature Interviews
- 29 UW Population Health Institute Organizational Chart
- 30 Institute Staff in 2017
- 31 Budget



Robert N. Golden, MD

Dean

UW School of Medicine & Public Health

It is a pleasure to welcome Dr. Sheri Johnson as the new Director

of the UW Population Health Institute. Dr. Johnson assumed this leadership position in January 2018, bringing a wonderful portfolio of experience and expertise based on her engagement and service at the local, state, and national levels. Sheri completed her undergraduate degree at Brown University and her PhD in clinical psychology at Boston University. She completed an internship in clinical psychology at Children’s Hospital of Boston/Judge Baker Children’s Center, with an appointment as a clinical fellow in psychology at Harvard Medical School. Dr. Johnson has extensive experience in Wisconsin, including past appointments at Sinai Samaritan Medical Center, Children’s Hospital of Wisconsin, and Milwaukee Health Services, Inc. From 2005-2008, she served as administrator and state health officer in the Wisconsin Department of Health and Family Services. I want to thank Dr. Patrick Remington, who served as the Interim Director following Karen Timberlake’s departure in October 2016. Dr. Remington’s enthusiasm and ongoing deep commitment to the Institute provides a strong base for the ongoing evolution of the Institute.

The Institute has grown remarkably over the past 9 years, as demonstrated by its budget moving from about \$3 million in 2008 to more than \$11 million in 2017. The work of the Institute is broad, deep, and meaningful.

This annual report documents the numerous activities and significant accomplishments of the Institute’s faculty, staff, and students. The Institute’s evaluation research and health policy programs continue to improve the evidence-base for practice and share this knowledge with policy makers—thus shifting the debate away from “what do we know?” to an impactful focus on “how can our knowledge be translated into better health?”. The County Health Rankings and Roadmaps, with support from the Robert Wood Johnson Foundation, has become a nationally-recognized program that utilizes data to catalyze action across the nation. This best in class program provides a roadmap for driving health improvements and health equity via evidence-based policies and programs.

The UW Population Health Institute has a storied history of service to the people of our state. I am confident that with Dr. Johnson at the helm, the best is yet to come.



Sheri Johnson, PhD

Director

UW Population Health Institute

I am honored to share the Population Health Institute 2017 annual report. I joined the Institute as Director in January 2018 and am eager to build on its “long and storied” reputation of excellence and innovation. My connection to the Institute began in 2005 when I served as the Administrator and State Health Officer for the Wisconsin Division of Public Health and continued through 2009 as a member of the PHI Advisory Board. The Institute has greatly influenced the local, state, and national dialogue about health and advanced a narrative that is rooted in science and accessible for action among a wide spectrum of advocates and leaders. I am thrilled to be connected to the Institute again and to work with amazing “thinkers and doers”.

This year’s report highlights how the Institute engages with stakeholders to address many of the most pressing health concerns we face as a society. These efforts include:

- Monitoring, evaluating, and communicating about ACA implementation in Wisconsin
- Evaluating opioid prevention and harm reduction programs
- Launching the Wisconsin Healthy Communities Designation
- Presenting the County Health Rankings at more than 100 national, state and local meetings

While many accomplishments are highlighted in this year’s report, we recognize that our work is far from done. So how do we join with partners across sectors to assure that everyone has a fair shot at health? As we work to identify solutions and “translate research for policy and practice”, it is essential that we meaningfully involve the people who are experiencing poor health outcomes. Their input is key to identifying the right solutions and making them work for their communities. Highlighting the ways everyone gains when unfair obstacles to health are removed and necessary resources are shared is critical. No one should have less of a chance to be healthy because of where they live, how much money they make, or the color of their skin.

The Institute’s history of service to the people of Wisconsin and the nation is remarkable. The ardent spirit of staff, program leaders, Advisory Board members, local, state and national partners inspires hope and determination. I accept the baton of leadership eagerly, soberly and with great anticipation of the important outcomes of our work.

Our Mission: Translating Research for Policy and Practice

The UW Population Health Institute advances health and well-being for all by developing and evaluating interventions and promoting evidence-based approaches to policy and practice at the local, state, and national levels. The Institute works across the full spectrum of factors that contribute to health.

A focal point for health and health care dialogue within the University of Wisconsin-Madison, and a convener of stakeholders, the Institute promotes an exchange of expertise between and among those within the university and those in the policy and practice arena.



Our Goals:

- *Address* a broad range of real-world, health-related problems of topical interest and stakeholder relevance;
- *Promote* partnerships between researchers and users of research, encouraging collaboration between the academic community and those engaged in practice and policy within both the public and private sectors;
- *Evaluate* programs and policies to support quality improvement, promote accountability, and seek evidence-based solutions;
- *Build* the knowledge base of effective programs and policies; and
- *Provide* learning opportunities for practitioners and students.



Our Values:

Impact: Have an impact on problems that matter

Action: Support action based on research and data

Influence: Leverage the assets of the University in service to the greater community

Collaboration: Work in diverse partnerships, respecting and drawing upon the strengths and assets that partners bring

Creativity: Seek out innovative and pragmatic solutions

Curiosity: Foster knowledge exchange across sectors

Excellence: Uphold a commitment to excellence and continuous quality improvement

Equity: Advance initiatives that ensure all people have the opportunity to achieve their full health potential



Photos by Jeff Miller/UW-Madison

Community Advisory Board

The Institute is guided by a Community Advisory Board with members from the health care, public health, business, and education sectors, as well as leaders from Wisconsin's legislature.

The Board meets two to three times per year to guide the work of the Institute and provide feedback on its programs and publications.

Advisory Board Members in 2017

Bevan Baker

Milwaukee Health Commissioner
City of Milwaukee Health Department

Tim Bartholow

VP & Chief Medical Officer
WEA Trust

Eric Borgerding

President/CEO
Wisconsin Hospital Association

Cheryl DeMars

President and CEO
The Alliance

Kurt Eggebrecht

Health Officer
Appleton City Health Department

Curt Gielow

Campus Chief Executive, VP
Administration School of Pharmacy
Concordia University-Ann Arbor

Kathy Loppnow

Health Occupation Education Director
Wisconsin Technical College System

Gregory Nycz

Director
Family Health Center of Marshfield Inc.

Lisa Peyton-Caire

President
The Foundation for Black Women's Wellness

Christopher Queram

President/CEO
WI Collaborative for Healthcare Quality

Ayaz Samadani

Family Physician
Dean/St. Mary Regional Clinic—Beaver Dam

Annette Severson

Associate Chief Nurse
Nursing Education and Research
Zablocki VA Medical Center

Greg Simmons

President and CEO
MetaStar, Inc.

Tim Size

Executive Director
Rural Wisconsin Health Cooperative

Jeff Stone

Administrator—Division of Water, Compliance
and Consumer Affairs
Wisconsin Public Service

Executive Committee

The Population Health Institute supports the mission of our integrated School of Medicine and Public Health to translate public health and health policy research for practice. We consider our work an embodiment of the Wisconsin Idea, working with the public and private sectors – government, business, advocates, and community members — at the state and local level — toward a healthier Wisconsin.

The Executive Committee provides guidance to the Director on the performance of the Institute, reviewing goals and objectives and evaluating accomplishments through this annual report.

Executive Committee Members in 2017

Tom Oliver, PhD, MHA

Professor, Population Health Sciences
School of Medicine and Public Health
University of Wisconsin-Madison

Patrick Remington, MD, MPH

Associate Dean for Public Health
Professor, Population Health Sciences, UW School of Medicine and Public Health

Maureen A. Smith, MD, MPH, PhD

Professor, Departments of Population Health Sciences, and Family Medicine & Community Health
Director, Health Innovation Program
Director, Community-Academic Partnerships Core, UW Institute for Clinical and Translational Research

Barbara (Bobbi) Wolfe, PhD

Richard A Easterlin Professor of Health Economics,
Department of PHS, Economics and the La Follette School of Public Affairs
University of Wisconsin—Madison

Susan Zahner, DrPH, MPH , FAAN

Associate Dean for Faculty Affairs
Vilas Distinguished Achievement Professor
University of Wisconsin—Madison School of Nursing



Photo by Bryce Richter / UW-Madison

Affiliated Faculty Investigators

These faculty members are affiliated with the UW Population Health Institute through a joint appointment with their home departments. Faculty are designated as "affiliated" when their work extends the teaching and research of our Institute.



Alex Adams, MD, PhD

Professor, Department of Family Medicine & Community Health
UW School of Medicine and Public Health

Affiliation: Obesity Prevention Initiative – Evaluation Research Group



Laura Dague, PhD

Assistant Professor
Texas A&M University

Affiliation: Health Policy Group, Medicaid Research Team



Richard Brown, MD, MPH

Professor, Department of Family Medicine & Community Health
Director of the Wisconsin Initiative to Promote Healthy Lifestyles
UW School of Medicine and Public Health

Affiliation: High School SBIRT Project - Evaluation Research Group



Deb Ehrenthal, MD, MPH, FACP

Associate Professor
Lifecourse Initiative for Healthy Families
Endowed Chair
UW School of Medicine and Public Health

Affiliations: Lifecourse Initiative for Healthy Families, Obesity Prevention Initiative - Evaluation Research Group; Preceptor, Population Health Service Fellowship - MATCH Group



Marguerite Burns, PhD

Assistant Professor, Population Health Sciences
UW School of Medicine and Public Health

Affiliation: Health Policy Group, Medicaid Research Team



David Kindig, MD, PhD

Emeritus Professor, Population Health Sciences
Emeritus Vice-Chancellor, Health Sciences
UW School of Medicine and Public Health

Affiliation: Principal Investigator, Making Wisconsin the Healthiest State Project – MATCH Group; Strategic Advisor, County Health Rankings & Roadmaps



Aaron Carrel, MD

Associate Professor, Pediatrics
UW School of Medicine and Public Health
Medical Director of the UW Health Pediatric Fitness Clinic

Affiliation: Obesity Prevention Initiative - Evaluation Research Group



James LaGro, Jr., PhD

Professor
UW Urban and Regional Planning

Affiliation: Obesity Prevention Initiative, Evaluation Research Group



Brian Christens, PhD

Rothermel-Bascom Associate Professor,
Civil Society & Community Research
Faculty Director, Center for Community & Nonprofit Studies
UW School of Human Ecology

Affiliation: Obesity Prevention Initiative – Evaluation Research Group



Kevin Look, PharmD, PhD

Assistant Professor, Social and Administrative Sciences
UW School of Pharmacy

Affiliation: Health Policy Group, Medicaid Research Team

Affiliated Faculty Investigators (cont'd)



Kristen Malecki, PhD, MPH

Assistant Professor, Population Health Sciences
UW School of Medicine and Public Health
Affiliation: Obesity Prevention Initiative, Breast Cancer & The Environment Research Program – Evaluation



Geof Swain, MD, MPH

Medical Director and Chief Medical Officer, Milwaukee Health Department
Associate Professor, Department of Family Medicine and Community Health
UW School of Medicine and Public Health

Affiliation: Population Health Service Fellowship – MATCH Group



D. Paul Moberg, PhD

Research Professor
Senior Faculty Advisory, UWPHI
Evaluation Research Group
Director for Evaluation, Institute for Clinical & Translational Research
UW School of Medicine and Public Health

Affiliation: Evaluation Research Group



Amy Trentham-Dietz, PhD

Professor, Department of Population Health Sciences
Associate Director, Population Sciences, Carbone Cancer Center
UW School of Medicine and Public Health

Affiliation: Breast Cancer & the Environment Research Program – Evaluation Research Group



Tom Oliver, PhD, MHA

Professor, Population Health Sciences
UW School of Medicine and Public Health

Affiliation: Principal Investigator, Population Health Service Fellowship – MATCH Group



Jim Vergeront, MD

Program Director, Wisconsin AIDS/HIV Program
Wisconsin Department of Health Services
Adjunct Professor
UW School of Medicine and Public Health

Affiliation: Preceptor & Faculty Member, Population Health Service Fellowship – MATCH Group



Patrick Remington, MD, MPH

Associate Dean for Public Health
Professor, Population Health Sciences
UW School of Medicine and Public Health

Affiliation: Obesity Prevention Initiative - Evaluation Research Group; Principal Investigator, Population Health Service Fellowship – MATCH Group; Chair, County Health Rankings & Roadmap

Fellowship – MATCH Group; Chair, County Health Rankings & Roadmap



Joel Rogers, PhD, JD

Sewell-Bascom Professor of Law, Political Science, Public Affairs, and Sociology
Director of the Center on Wisconsin Strategy

Affiliation: Health Policy for Wisconsin Communities – Evaluation Research Group, MATCH Group

MATCH Group



David Weimer, PhD

Edwin E Witte Professor of Political Economy
UW La Follette School of Public Affairs

Affiliation: Recovery High Schools Evaluation - Evaluation Research Group; Health Policy Group



Brendan Saloner, PhD

Associate Professor
Johns Hopkins University

Affiliation: Health Policy Group, Medicaid Research team



Bobbi Wolfe, PhD

Richard E Easterlin Professor of Health Economics
Department of PHS, Economics and the La Follette School of Public Affairs, University of Wisconsin-Madison

Affiliation: Health Policy Group

Institute Programs and Cross-Cutting Themes

The Institute is led by leaders of national stature in applied public health and health policy research. Our progress during 2017 could not have been achieved without the ongoing contributions from members of our Community Advisory Board and support from the University of Wisconsin School of Medicine and Public Health and the Wisconsin Partnership Program.

The Programs of the Institute

County Health Rankings & Roadmaps (a collaboration with the Robert Wood Johnson Foundation): Analyzes and disseminates trends in population health; supports communities across the nation that are engaged in health improvement with data, evidence, tools, and guidance; identifies communities who are at the forefront of population health improvement; and networks communities and organizations leading population health efforts.

Evaluation Research: Conducts evaluation of a diverse range of public health and human service programming, including substance abuse prevention and treatment, maternal and child health, school health promotion, behavioral health in criminal justice populations, treatment courts, mental health, and chronic disease.

Health Policy: Engages in research, consulting, policy analyses and evaluation in partnership with Wisconsin's leading public and private sector policymakers in health and health care, addressing questions of access, coverage, cost, financing, health system performance, disparities and the social determinants of health. In short: What works? Who pays? Who benefits? Is the benefit worth the cost?

Mobilizing Action Toward Community Health (MATCH): Builds capacity for and engages stakeholders in community health improvement, monitors and assesses population health data for action, and connects the Institute to diverse sectors in the state through convenings, training programs and collaborative efforts to make sure all people have a fair chance to be healthy in their homes, schools, workplaces, and neighborhoods.

Cross-Cutting Themes

Education: Serves as a population health “laboratory” for professional development, where graduate students and fellows apply their skills to real-world issues and settings.

Community Engagement: Fosters strong partnerships between the University of Wisconsin and population health practitioners and policymakers.

Translational Research: Produces, evaluates, and disseminates research to support “what works” in policy and practice.

County Health Rankings & Roadmaps (CHR&R)



Julie Willems Van Dijk
*Program Director and
Senior Scientist*

Description: The CHR&R group works in collaboration with the Robert Wood Johnson Foundation (RWJF)

to provide data, evidence, guidance, and examples to communities throughout the nation who are committed to improving their health. Through the production and dissemination of our products, we focus the nation's attention on the many factors that influence health, thus shifting mindsets about what and who produces health. The result of mindset shifts is that community members recognize the need for action and often join together to implement evidence-informed policies and programs to advance health. Our ultimate goal is to improve health outcomes and increase health equity in local communities across the nation.

Primary Partners:

Diverse organizations and individuals at the national, state, regional, and local levels from nonprofit, academic, governmental, business, community development, philanthropic, health care, and public health sectors working to improve the health of local communities across the nation.

Major Program Components:

- County Health Rankings
- What Works for Health
- Roadmaps to Health Action Center and Coaching
- RWJF Culture of Health Prize
- National Partnerships & Networking

Highlights in 2017:

- Released the 2017 County Health Rankings, accompanied by a Key Findings Report that highlighted recent increases in premature death, explored the distribution of those deaths, noting marked increases in deaths in younger populations (ages 15-44) that were largely driven by injury deaths. The report explored differences in these deaths by community type and race/ethnicity and also introduced a new additional measure, disconnected youth.
- Released a Request for Proposals for extramural research and funded four projects that will explore methods and measures to enhance the Rankings methods.
- Announced eight new RWJF Culture of Health Prize recipients, selected from a pool of applications from over 200 communities across the nation, and co-hosted (with RWJF) a celebration and learning event.
- Launched a refreshed version of the County Health Rankings & Roadmaps website to make navigation easier and the site more appealing to users.
- Created a Partner Center, a series of guides that can help change-makers in all sectors make connections and leverage collective power to put ideas into action.
- In collaboration with the Institute for Healthcare Improvement and Georgia Health Policy Center, created a tool to describe and assess the developmental pathway communities take to improve health.
- Presented the County Health Rankings data and tools for action at over 100 national, state, and local meetings.
- In response to the RWJF Strategic Assessment of the County Health Rankings & Roadmaps program, conducted strategic planning sessions with RWJF to envision where the program will head in its second decade.

Evaluation Research



Sara Lindberg
Program Director &
Associate Scientist

Description: The Evaluation Research Group conducts assessments of state and local programs in public health and human services. The team also maintains directly funded evaluation research projects, using experimental and quasi-experimental designs to conduct rigorous evaluation of innovative programs.

Primary Partners: Community, tribal, county, and state governmental agencies; collaboration with national researchers, practitioners, and faculty and staff within the University of Wisconsin.

The Program Evaluation group was involved in more than 30 actively-funded projects during 2017. Evaluations include a diverse range of program concerns: substance abuse prevention and treatment, maternal and child health, school health promotion, behavioral health in criminal justice populations, mental health, and chronic disease.

Selected Evaluation Projects:

- Evaluation of numerous prevention and harm reduction programs designed to address the opioid epidemic in Wisconsin, such as:
 - Partnerships for Success, which evaluates implementation of evidence-based approaches to substance use and abuse prevention in Wisconsin Communities;
 - Medication Assisted Treatment, which evaluates the effectiveness of various medical and behavioral treatments for opioid addiction;
 - Prescription Drug/Opioid Overdose-Related Deaths Prevention Project, which focuses on the reduction of deaths and adverse events by training first responders and other members of the community on prevention and the implementation of secondary prevention strategies, including the purchase and distribution of naloxone to first responders;

- Family Foundations Home Visiting Programs to improve maternal and child health in tribal communities funded by the Wisconsin Department of Children and Families via Great Lakes Inter-Tribal Council;
- Criminal Justice: Several projects focus on development and evaluation of drug treatment courts and diversion programs with Wisconsin counties and tribes;
- Obesity Prevention: several projects, including a statewide effort to build collective impact and community capacity to change policies, systems, and environments contributing to obesity;
- A variety of programs based both in the community and in schools that address identifying and providing services to youth and young adults with, or who are at risk for, serious mental health problems; and
- Health Disparities: Several projects focus on Native American health, in partnership with the Great Lakes Inter-Tribal Council, and on African American and Latino health, in partnership with the Wisconsin Division of Public Health, the Department of Public Instruction and the Wisconsin Partnership Program.

Examples of the Services Provided:

- Designing and implementing comprehensive program evaluations
- Developing a wide range of evaluation designs and needs assessments
- Developing data collection methods, such as survey instruments and interview protocols
- Measuring progress toward program objectives and national performance standards
- Conducting qualitative research, including content analysis, intensive interviews, focus groups, and site visits
- Statistical analysis of data from surveys, administrative data, and program-specific data sets

Health Policy



Donna Friedsam
*Program Director
 Distinguished Researcher,
 Population Health Sciences*

Description: The Institute's health policy programs connect the University to Wisconsin's leading public and private sector policymakers

in the health care and public health arenas, focusing on access, cost, financing, coverage, health system performance, and on disparities. In short: What works? Who pays? Who benefits? And is the benefit worth the cost?

The group conducts primary research, evaluates policies and programs, and communicates new and existing evidence and analyses through issue briefs, consultancies, briefings, forums, and symposia.

Primary Stakeholders: Lawmakers, state officials, legislative and administrative agency staff, and health care provider, purchaser, payer, business and consumer groups.

Highlights from 2017

Health Financing and System Reform

- Conducted second year of a four-year evaluation of Wisconsin's 2014 Medicaid waiver, its impact on health care utilization, costs, and enrollment by parents, caretaker adults, and childless adults.
- Reviewed DHS evaluation of SeniorCare, and submitted a report to DHS assessing the existing evaluation and making recommendations for future evaluation methods.
- Authored briefing paper about the ACA in Wisconsin as it pertains to insurance markets and premiums.
- Served on the Wisconsin Medicaid agency's Strategic Workgroup to plan for the implementation of Wisconsin's entitlement reforms and of the Affordable Care Act.
- Produced chartpack monitoring ACA enrollment and changes in BadgerCare enrollment, with information about insurance premiums and plans.
- Provide staff consulting and facilitation under contract with the Wisconsin Council on Medical Education and Workforce (WCMEW) and its committees.

Evidence-Based Health Policy Project

Delivered Capitol briefings focusing on:

- The Affordable Care Act and Medicaid: What Comes Next?
- Prescription Drug Pricing Trends and State Policy Options
- Opioid Use: New and Emerging Programs and Policies
- Community Health Expertise in the Fox Valley
- Preventing Falls in Older Adults: New Program Approaches
- Social Determinants of Health: The Other Half of Health

Teaching Applied Health Policy

- Contributed to medical students' integrated cases on health care costs and insurance and on the policy process.
- Mentored two La Follette and two MPH graduate students as project assistants, and two economics doctoral student.
- Delivered lectures in UW courses in the nursing, physician assistant, and medicine, and public health programs, focusing on Wisconsin health systems and financing, Medicaid, and the federal Affordable Care Act.

Policy in the Community

- Served as a contracted advisor to UW Extension on health care access, coverage, and ACA implementation.
- Continued oversight of Covering Wisconsin, including \$1.5 million annual budget, 13 employed staff, subcontracts in agencies serving 23 counties, and leadership of seven separate funding sources.
- Managed contract with Wisconsin Health Information Organization (WHIO) to conduct health insurance literacy programming – a partnership between Covering Wisconsin and Wisconsin Health Literacy.
- Responded to numerous media interviews regarding ACA open enrollment and potential changes under new federal leadership, including Wisconsin Public Television, Wisconsin Public Radio, Milwaukee Public Radio, *Milwaukee Journal Sentinel*, *Wisconsin State Journal*, *The Hill*, *USA Today Magazine*, *Vox.com*, *Modern Healthcare*, *Christian Science Monitor*, *WKOW-TV*, *WISC-TV*, *WisPolitics*, *Wisconsin Health News*.

Mobilizing Action Toward Community Health (MATCH)



Paula Tran Inzeo
Program Director &
Associate Researcher

Description: The MATCH group develops and deploys programs and resources as well as engages in collaborative partnerships that

support strategic community - driven efforts to make sure all people have a fair chance to be healthy in their homes, schools, workplaces, and neighborhoods. MATCH aims to change practice, focus priorities, and shift power to support shared action on root causes of health and equity. The MATCH group does this by:

- Building skills and capacity through delivering training, providing technical assistance, and leading communities of practice;
- Developing and sharing research, frameworks and tools for change; and
- Convening and growing alliances for aligned action.

MATCH resources include tools and supports to:

- Monitor health and health disparities;
- Move from data to action by bringing people together to look at the many factors that influence health, select strategies that work, and make changes that will have a lasting impact;
- Disseminate information to motivate action toward community health improvement;
- Deliver training programs that build the capacity of and provide service to communities, coalitions, and public health leaders; and
- Produce seminars, workshops, and lifelong learning opportunities for community leaders and public health practitioners.

Primary Partners

Diverse organizations and individuals at the local, state, and national levels from non-profit, academic, governmental, business, and local public health sectors working to improve the health of the state of Wisconsin.

Major Projects

Making Wisconsin the Healthiest State

- Measure, assess and report on Wisconsin's health and health disparities.
- Support local community health improvement via tools such as the Wisconsin version of What Works for Health and www.improvingWIhealth.org, which houses information on shared priorities from community health assessments and improvement plans from local health departments and hospitals.
- Launched the Wisconsin Healthy Communities Designation, a new program in collaboration with diverse statewide groups. The designation program is designed to recognize and encourage achievements in health improvement in Wisconsin communities and to promote cooperation across economic development and health improvement initiatives. The program aims to 1) recognize local communities' efforts to improve health in multiple areas such as health behaviors, clinical care, social & economic factors, and physical environment; 2) encourage communities to conceptualize health improvement in this broad way, structuring their health improvement efforts accordingly; 3) promote cooperation between diverse sectors, including economic development and health improvement.

<https://www.wihealthycommunities.org/>



Major Projects (cont'd)

Statewide Alignment and Community Training and Technical Assistance

In response to local capacity-building needs and in order to increase efficiency among organizations working with communities, MATCH works with several partners to help align and augment efforts to support community-led health improvement initiatives. Examples of this work include: co-hosting monthly coalition networking calls centered around cross-cutting capacity building skills; partnering with UW-Extension to offer a three-day training to build local community coaching capacity; and collaborating with partners (including within the Population Health Institute) to plan the Making Wisconsin the Healthiest State Convenings, which will have a strong community-capacity building component. The Making Wisconsin the Healthiest State Convenings include an Agenda Setting Meeting in odd years and a Summit for capacity building and action in even years. During the 2017 Agenda Setting Meeting, about 80 stakeholders came together to set six priorities to make progress on health equity in Wisconsin. The six priorities include:

1. Centering the voices of those most impacted by inequity
2. Building diverse alliances
3. Advancing a health equity narrative for Wisconsin
4. Declaring racism a public health emergency
5. Creating a health equity policy agenda
6. Cultivating health equity champions

The Summit will take place in Green Bay, WI on September 20-21, 2018.

<http://www.wpha.org/mpage/HealthiestState>

Health Equity Practice Initiatives

MATCH supports strategic partnerships and alliances to take shared action on root causes of health inequities. Partnerships are often comprised of public health, planning, community organizing, academia, philanthropy, and other fields, and are taking shared action in areas such as criminal justice, community development and housing. MATCH also helps bridge efforts in Wisconsin to regional and national partners working to advance health equity.

The Thrive WI Statewide Health Equity Alliance (Thrive WI), established in 2012 and staffed by MATCH, serves as a hub for multiple efforts aimed at improving social determinants of health and provides a forum for connecting various socioeconomic factor advocates to their public health colleagues. Thrive WI hosts regular Health Equity Connections, community of practice calls, and assists in the development of local and regional collaborations.

The project "From Punishment to Restoration: Re-imagining Criminal Justice to Improve the Health of Wisconsin's Families and Communities" is one example of multi-level shared action. This project aims to set the stage for sustainable positive policy, system and environmental change related to community reentry and to build sustainable civic leadership of previously incarcerated individuals. MATCH staff collaborated on the completion of a health impact assessment on community reentry and is providing ongoing support to connect the public health community with those seeking to address the criminal justice system as an upstream driver of health.

Major Projects (cont'd)

Health in All Policies Initiatives

Health in All Policies (HiAP) is a strategy to organize decision-making and initiatives to address factors that influence health and equity, including the social determinants of health and root causes of health, which include educational attainment, housing, transportation options, and neighborhood safety. MATCH provides training and technical assistance on HiAP frameworks, provides leadership to the WI HiAP Network and works with partners to implement HiAP.

The Legacy Community Alliance for Health Project, on which MATCH is a lead partner, aims to improve health and health equity at the community level by implementing a HiAP approach — a proven framework for comprehensive and collaborative government action — across the state.

The Health in All Policies Network is a community of practice that supports learning, information sharing, and strategic connections for action. The Network facilitates a quarterly webinar, a newsletter, and an annual training. The Network was formerly the Health Impact Assessment and Health in All Policies Section that was originally formed and housed within the Wisconsin Public Health Association (WPHA). Due to a growing number of members and increased diversity of breadth of fields represented, we have evolved into a Network housed within MATCH and are still in partnership with WPHA to meet new needs.

Healthy Wisconsin Leadership Institute (see program page for more detail)

- Community Teams Program
- COACH (Collaborating, Organizing and Advocating for Community Health) Program

Population Health Service Fellowship Program (see program page for more detail)

The Wisconsin Population Health Service Fellowship Program is a two-year service and training program designed for masters or doctoral prepared individuals in public health and allied sciences. The two-year program provides applicants with practical field assignments in community based, non-profit, governmental and health service organizations.

The purpose of the Fellowship Program is to provide **service** - *by addressing some of the state's most pressing public health challenges* - and **workforce development**, *by building population health skills and experience in future public health leaders. The program is modeled after national applied training programs, including the CDC Public Health Prevention Service Program.*



Education

Description: The Institute’s programs provide students and fellows the opportunity to “learn while doing”. This focus on service learning adds to coursework that students take. Students working with the Institute are enrolled in the Population Health MS/PhD program, Master of Public Health (MPH) program, the La Follette School of Public Affairs, the Department of Economics, and elsewhere. The Institute serves as a population health “laboratory” for learning, where students apply their skills to real-world issues and settings, and have an opportunity to publish results as issue briefs or articles.

Primary Partners: State and local health and health care leaders who provide service learning opportunities for students working in the Institute, or for fellows in the Wisconsin Population Health Service Fellowship.

Wisconsin Population Health Service Fellowship

<http://www.wiphfellowship.org>

The Wisconsin Population Health Service Fellowship recruits, deploys, and cultivates excellent early-career public health professionals to work for two years in public health and community-based organizations throughout Wisconsin. The program receives core funding from the Wisconsin Partnership Program (WPP) at the UW School of Medicine and Public Health. The Fellowship combines service — by tackling some of the state’s most pressing public health challenges and attracting resources to community and public health — with workforce development, by developing population health skills and experience in future public health leaders. In 2014, Preventive Medicine Residents were integrated into the Fellowship learning community. In addition to core funding from WPP, leveraged Fellow slots allows for the Fellowship to respond to the needs of organizations throughout Wisconsin and expand the reach of the program. A curriculum and learning community centered around health equity and collaborative leadership allows the Institute to foster practitioners who are ready to tackle the root causes of ill health in Wisconsin communities.



Photo by Tim Fitch Photography

Wisconsin Population Health Service Fellowship (cont'd)

<http://www.wiphfellowship.org>

2017-2019 Wisconsin Population Health Service Fellows and Preventive Medicine Residents

Whitney Ederer

Wisconsin Department of Health Services

Niki Euhardy

Wood County Health Department

Morgan Krhin

United Voices & Milwaukee Health Department

Maggie Northrup

Office of Policy and Practice Alignment, Wisconsin Division of Public Health

Cory Steinmetz

Office of Health Informatics, Wisconsin Division of Public Health

Odilichi Ezenwanne

Preventive Medicine Resident

Lia Kostiuk

Preventive Medicine Resident

2016-2018 Wisconsin Population Health Service Fellows and Preventive Medicine Residents

Stevie Burrows

Public Health Madison Dane County

Janine Foggia

Ascension Health and Marathon County Health Department

Britt Nigon

Wisconsin Division of Public Health Chronic Disease Prevention Program

Diego Tamez

Preventive Medicine Resident

Janice Valenzuela

Division of Public Health's AIDS/HIV Section of the Bureau of Communicable Diseases & Emergency Response and the Wisconsin Center for Public Health Education and Training (WiCPHET) at the UW School of Medicine and Public Health

Fiona Weeks

Milwaukee Health Department in the Division of Family and Community Health and the Institute for Child and Family Well-being

Jasmine Zapata

Preventive Medicine Resident

2015-2017 Wisconsin Population Health Service Fellows and Preventive Medicine Residents

Salma Abadin

Milwaukee Health Department and IMPACT Planning Council

Kallista Bley

Wood County Health Department and Forward Community Investments

Ashley Kraybill

Wisconsin Division of Public Health, Office of Policy and Practice Alignment Policy Section

Maria Mora Pinzon

Preventive Medicine Resident

Elizabeth Stein

Preventive Medicine Resident

Leslie Tou

Wisconsin Division of Public Health, Bureau of Community Health Promotion Family Section, and the Lifecourse Initiative for Healthy Families, UW School of Medicine and Public Health

Nick Zupan

Wisconsin Division of Public Health, Western Regional Office and Eau Claire City-County Health Department



Photo by Tim Fitch Photography

Community Engagement

The UW's "Wisconsin Idea" envisions close working relationships throughout the State of Wisconsin, such that "the beneficent influence of the University reaches every family in the State." Institute staff members regularly engage with colleagues and partners in programs, applied research, program evaluation, committees, consulting, proposal development, and other activities. These partnerships — some funded, some in-kind, and some simply collegiate — include entities in the public and private sectors as well as in other departments and centers throughout the University.

The list provides a selected view of the myriad organizations with which Institute staff collaborated and/or consulted in 2017.

Active Living By Design Adams-Friendship Area School District	Dane County District Attorney's Office	Green Tier Legacy Communities
AIDS Resource Center of Wisconsin	DarJune Recovery Community Center & Services	HEAL Coalition
American Bar Association	Department of Health Services	Health Care Education and Training
Ascension Health	Diverse and Resilient	Health Resources and Services Administration
Ashland County Bolton Refuge House, Inc.	Division of Public Health (State of Wisconsin Department of Health Services)	Health Services & Administration Office of Rural Health
Bad River Family Foundations	East Central Wisconsin Regional Planning Commission	HealthNet of Rock County, Inc.
Belin Health System	Eau Claire City-County Health Department	Ho-Chunk Nation Health Department and Breastfeeding Coalition
Brown County Human Services	Eau Claire County Restorative Justice Program	Horizon High School
BUILD Health Challenge	Eau Claire Hmong Mutual Assistance Association	Institute for Healthcare Improvement/100 Million Healthier Lives
Build Healthy Places Network	Eau Claire YMCA	Iowa County Health Department
Building a Safer Evansville (BASE)	Esther	Iowa County Social Services
Bureau of Justice Assistance	Family Support Center	Institute for Child and Family Well-being
Center for Creative Leadership	Federal Reserve Banks of Chicago & Cleveland	Jackson County
Centers for Disease Control and Prevention	Feeding America Eastern Wisconsin	KWG Counseling
Central Wisconsin Health Partnership	Feeding Wisconsin	La Crosse County Health Department
Children's Hospital of Wisconsin City of Milwaukee	Fit Oshkosh, Because Race Matters	Lac Courte Oreilles Band of Lake Superior Chippewa Indians
Clinton Community Schools	Fond du Lac County	Lac Courte Oreilles (LCO) Mino Maajisewin Home Visit Program
Columbia County Health & Human Services	Fort Healthcare	Lac du Flambeau Band of Lake Superior Chippewa Indians
Community Advocates	Forward Community Investments	Local Initiatives Support Corporation (LISC)
Community Groundworks	Georgia Health Policy Center	
Covering Wisconsin	Gravel Road Farm	
Dane County Criminal Justice Council – Racial Disparities Sub Committee	Great Lakes Inter-Tribal Council	
	Green County UW-Extension	

Madison Region Economic Partnership	Rusk County WIC	Milwaukee Helen Bader School of Social Welfare
Marathon County Health Department	RWCFS Head Start/Early Head Start	UW Extension
Marshfield Clinic	Sauk Prairie Memorial Hospital	Winnebago County Health Department
Marshfield Clinic Research Foundation	Scenic Bluffs Community Health Centers	Wisconsin Alliance for Women's Health
Medical College of Wisconsin	School District of Ashland	Wisconsin Association of Treatment Court Professionals
Milwaukee Health Department	School District of Beloit	Wisconsin Center for Public Health Education and Training
Milwaukee Health Care Partnership	Scott Consulting Partners	Wisconsin Collaborative for Healthcare Quality
Ministry Health Care	Sixteenth Street Community Health Centers	Wisconsin Council on Medical Education & Workforce
National 4H Council	South Central Wisconsin Area Health Education Center	Wisconsin Counties Association
National Association of Counties	Southwest Alliance for Tobacco Prevention	Wisconsin Department of Agriculture, Trade, and Consumer Protection
National Association of Drug Court Professionals	Southwest Community Action Program	Wisconsin Department of Children and Families
National Cancer Institute	Southwest Wisconsin Workforce Development Board	Wisconsin Department of Health Services
National Institute for Alcohol Abuse and Alcoholism	SSM Health	Wisconsin Department of Justice Treatment Alternatives and Diversion Program
National Institute of Environmental Health Sciences	St. Norbert College— Counseling and Psychological Services	Wisconsin Department of Natural Resources
National League of Cities	State of Wisconsin WIC	Wisconsin Department of Public Instruction
National Legal Aid & Defender Association (NLADA)	Statewide Criminal Justice Coordinating Council	Wisconsin Inter-Tribal Criminal Justice Council
National Network for Public Health Institutes	Statewide Tribal Criminal Justice Coordinating Council	Wisconsin League of Municipalities
National Racial Justice Improvement Project (RJIP)	Substance Abuse and Mental Health Services Administration (SAMHSA)	Wisconsin Local Food Network
NeighborWorks	Southwestern Wisconsin Community Action Program (SWCAP)	Wisconsin Minority Health Advisory Group
Oneida Nation Healthy Start, Great Lakes Inter-Tribal Council	Symons Recreation Complex	Wisconsin Local Food Network
Organic Valley	The Richland Hospital, Inc.	Wisconsin Minority Health Advisory Group
Outagamie County Public Health Division	The Robert Wood Johnson Foundation	Wisconsin Office of the State Public Defender
1000 Friends of Wisconsin	Theda Care	Wisconsin Public Health Association
Public Health Madison Dane County	Trinity Lutheran Church	Wisconsin Public Health Research Network
ReThink Health	UnidosUS	WISDOM
re:TH!NK	United States Department of Agriculture	Women & Children's Horizons
Richland County AmeriCorps Farm to School	United States Department of Education	Wood County Health Department
Richland County Health and Human Services	United Way of the Greater Chippewa Valley	Youth2Youth 4 Change
Richland Medical Center	United Way Worldwide	
The Richland Hospital, Inc	United Voices	
Richland Schools	UniverCity Alliance	
Rock County Public Health Department	University of Wisconsin-Eau Claire	
Rural Wisconsin Health Cooperative	University of Wisconsin-	

Healthy Wisconsin Leadership Institute

www.hwli.org

The Healthy Wisconsin Leadership Institute (HWLI) strengthens collaborative leadership capacity to advance health and health equity in Wisconsin. HWLI is supported by the Wisconsin Partnership Program at the University of Wisconsin School of Medicine and Public Health. HWLI provides systematic and accessible public and community health leadership training, education and technical assistance to support local agendas for community health improvement through the Community Teams and COACH programs.

The Regional Community Teams Program is a year long program that facilitates sustainable community partnerships through the development of collaborative leadership and public health skills among teams working on health improvement. The 12th cohort (2017 – 2018) includes five teams primarily located in Northeast Wisconsin:

2017-2018 Community Teams

Living the Waupaca Way — coordinating and empowering community groups to enhance overall health through good nutrition and physical activity.

Native Breastfeeding Coalition of Wisconsin (Statewide) — strengthening and encouraging the traditional practice of breastfeeding to improve the lives of women, babies and families for generations to come.

Fox Valley Thrives (Fox Valley Region) — increasing capacity to improve equity and make healthier communities for all through education, engagement, and strategic, collective action.

Brown County Alcohol & Drug Task Force — creating cultural change around alcohol/drug use in Brown County.

Healthy People Wood County Recreate Health — reducing the impact of chronic disease by creating community and systems level change that empower everyone to make healthy choices.

2016- 2017 Community Teams

Health Equity Alliance of Rock County (HEAR)

— ensuring that Rock County reaches its full health potential through a commitment to health equity and community collaboration.

Richland FIT — creating a healthier Richland County for all residents by offering healthy choices, revising environments and sustaining fitness through policy change.

Happy Healthy Neighbors - Cashton — creating a culture of health and mental well-being in the Cashton community through promotion and initiatives for healthy lifestyle choices for all residents.

Southwest Food Security Partnership (Iowa, Lafayette, Grant, Green, and Richland Counties) — identifying and understanding the root causes of food insecurity and engaging coalition partners in practical interventions to address food insecurity in the region.

Safe Spaces of the Chippewa Valley — improving the safety, visibility, health, and well-being of LGBTQ+ people of all ages in the Chippewa Valley.

Wisconsin Breastfeeding Coalition (statewide) — improving the health of Wisconsin by working collaboratively to protect, promote, and support breastfeeding.



Healthy Wisconsin Leadership Institute (cont'd)

The COACH (Collaborating, Organizing and Advocating for Community Health) Program is for coalitions and collaboratives who have already participated in the Community Teams Program. COACH offers three-years of coaching and technical assistance to continue strengthening skills and implementing policy, systems, and environmental changes that will improve health in Wisconsin communities. The third COACH cohort includes five teams:

2017-2020 Coach Teams

Richland FIT (Richland County) — committed to improving health where it starts--where people work, live, and play. Richland FIT will accomplish this by working to increase physical activity and improving healthy eating for all Richland County residents, promoting a holistic concept of “Fitness in Total,” and by strengthening the Richland FIT Coalition.

Safe Spaces Coalition (Eau Claire, Chippewa, and Dunn Counties) — working to improve the safety, visibility, health, and well being of LGBTQ people in the Chippewa Valley. SSC’s goals over the next three years include further institutionalization of safe spaces trainings and development of more advanced training modules; seeking and securing funding to sustain their coalition’s efforts; and increased participation in policy formation and advocacy.

Healthy Relationships Promotion Action Team (Eau Claire County) — committing time, efforts, and resources to eliminate incidents of domestic violence and sexual assault. The Healthy Relationships Promotion Action Team is assessing the community’s readiness for implementation of additional strategies, programs and policies that increase awareness of elements of healthy relationships and access to resources in the Eau Claire community.

Health Equity Alliance of Rock County (Rock County) — committed to health equity, through community collaboration, to ensure that Rock County reaches its full health potential. HEAR is currently writing their 2017-2020 Community Health Assessment (CHA) and Community Health Improvement Plan (CHIP), which exclusively outlines health equity as a priority. HEAR also hopes to strategically deploy evidence-based interventions, which might include patient navigators,

culturally adapted health care, and approaches to improving health literacy.

City of Milwaukee Tobacco-Free Alliance LGBTQ+ Work Group (Milwaukee) — working toward shifting the narrative around tobacco use in LGBTQ+ communities by creating new educational resources, partnering with Milwaukee Pride to begin to create smoke-free areas, and starting an LGBTQ FACT youth tobacco prevention group at a local high school. Over the next two - three years, they will continue to work on LGBTQ youth tobacco prevention and they plan to engage LGBTQ bar owners in tobacco prevention as well as continue to work on policies for tobacco-free pride celebrations.

2015-2018 Coach Teams

East Central Health in Planning Team (Calumet, Fond du Lac, Green Lake, Marquette, Menominee, Outagamie, Shawano, Waupaca, Waushara, and Winnebago Counties) — incorporating health into regional planning processes.

Wisconsin Food Systems Alliance (statewide) — aligning state and local initiatives to accelerate the healthy food systems movement throughout Wisconsin.

In 2017 the first cohort of COACH completed the program. The 2014-2017 cohort includes:

Working for Whitewater’s Wellness (W3) — addressing obesity through increasing physical activity, healthful eating, social connectedness, and positive outlook.

Fort Healthcare Healthy Communities Coalition (comprised of six local coalitions in Jefferson County) — promoting healthful living through environmental changes that increase community access to physical activity and availability and consumption of drinking water.

LIFE (Lifestyle Initiative for Fitness Empowerment) Foundation (Cross Plains, WI) — improving nutrition and increasing physical activity in a local safe environment to ultimately lower obesity-related disease risk.

Wisconsin Active Communities Alliance (WACA) (statewide) — increasing physical activity in communities across Wisconsin by making it easier and more inviting for people to move actively to, from, and at their destinations.

Translating Evidence for Practice

Evidence-Based Health Policy Project (EBHPP)

www.evidencebasedhealthpolicy.org

Sam Austin, Managing Director

The EBHPP, a partnership with the La Follette School of Public Affairs and the Wisconsin Legislative Council, connects lawmakers and researchers, along with public and private sector decision leaders, to elevate the role of evidence in a shared interest: advancing Wisconsin's Health.

- Provides policy makers, in both the public and private sectors, with timely, nonpartisan, high quality information for evidence-based decision making.
- Increases involvement of University of Wisconsin research and teaching activities in topical issues of state public policy.
- Draws on the leadership and talent of academic, government, and industry experts.
- Promotes the translation of research into practice and of practice into research.
- Designated as a core community engagement component of the University of Wisconsin School of Medicine and Public Health Institute for Clinical and Translational Research — Community Academic Partnership (ICTR-CAP).

Supported in part by the Wisconsin Partnership Program, UW School of Medicine and Public Health; the UW Chancellor's Office; and the UW Institute for Clinical & Translational Research.



Photo by Jeff Miller/UW-Madison

What Works For Health

www.whatworksforhealth.wisc.edu (Wisconsin)

<http://www.countyhealthrankings.org/take-action-to-improve-health/what-works-for-health> (National)

This online database provides review and assessment of available research to rate the effectiveness of a broad variety of strategies that can affect health through changes to:

- Health behaviors
- Clinical care
- Social and economic factors
- The physical environment

The underlying research is based on a model of population health that emphasizes the many factors that can make communities healthier places to live, learn, work, and play.

These tools systematically assess, summarize, and rate the evidence for policies and programs that can affect these factors. The goal is to provide public health professionals and community leaders with the information they need to make evidence-informed decisions about improving health in their communities and, where available, with tools to get started.

Analysts begin with a broad orientation search to define each policy or program and identify appropriate search terms. Targeted literature searches are conducted, focusing first on systematic reviews and peer reviewed articles.

Searches focus next on selected sources of grey literature and the findings of relevant, reputable organizations that assess policy and program effectiveness. Analysts prepare high level summaries of each source's key findings and quality; summaries are reviewed independently by another team member. A final evidence rating is assigned based on an assessment of the available information.

This database continues to be a key resource in Wisconsin for many of the applicants to the Wisconsin Partnership Program's Community Grant Program as well as others across the state and nation seeking to identify effective health improvement policies and programs.

See County Health Rankings & Roadmaps pg. 10

Supported by the Wisconsin Partnership Program, UW School of Medicine and Public Health and the Robert Wood Johnson Foundation.

Capitol Briefings by the Evidence-Based Health Policy Project & Trainings

The Affordable Care Act & Medicaid: What Comes Next and How Might the State Prepare?

January 11, 2017

Speakers

Gail Wilensky, PhD, Economist and Senior Fellow at Project HOPE
Michael Heifetz, State of Wisconsin Medicaid Director
Justin Sydnor, PhD, Economist and Professor, UW School of Business
Donna Friedsam, Health Policy Director, UW Population Health Institute

Sarah Wright, Program Manager Weight of the Fox Valley
Lynn Ann Clausing Rusch, Program Coordinator, Fox Valley Memory Project
Maren Peterson, Executive Director, National Alliance on Mental Illness - Fox Valley
Melissa Kraemer-Badtke, Principal Planner -- Safe Routes to School
East Central Wisconsin Regional Planning Commission

Addressing Opioid Use: What's New and Emerging in Wisconsin

March 1, 2017

Speakers

Aleksandra Zgierska, MD, PhD, UW Department of Family Medicine and Community Health
Capt. Cory Nelson, Madison Police Department, Sara Lindberg, PhD, MS, UW Population Health Institute
Bri Deyo, MPH. UW Screening in Trauma for Opioid Misuse Prevention (STOMP)

Preventing Falls in Older Adults: What's New and Emerging?

September 28, 2017

Speakers

Jane Mahoney, UW-Madison School of Medicine and Public Health
Militza Bonet-Vázquez, Medical College of Wisconsin
Jennifer Lefeber, Milwaukee County Department on Aging
David Mott, UW-Madison School of Pharmacy
Barb Michaels, Aging and Disability Resource Center of Brown County
Barb King, UW-Madison School of Nursing
Linsey Steege, UW-Madison School of Nursing
Shelly VanDenBergh, UW Health

Prescription Drug Pricing Trends and State Policy Options

April 27, 2017

Speakers

Representative Debra Kolste
Kevin Look, PhD, University of Wisconsin-Madison School of Pharmacy
Joe Cesarz, Director, Specialty Pharmacy Residency Program, UW Health
Rachel Currans-Henry, Director, Medicaid Bureau of Benefits Management, Wisconsin DHS
Eileen Mallow, Wisconsin Department of Employee Trust Funds

Social Determinants, Part 1: Family and Social Support

November 14, 2017

Speakers

Lawrence Berger, PhD, UW-Madison Institute for Research on Poverty
Gina Green-Harris Director, Lifecourse Initiative for Healthy Families

Community Health Expertise in the Fox Valley: How Local Groups Share What They Know

September 8, 2017

Speakers

State Representatives Dave Murphy, Mike Rohrkaste, and Amanda Stuck

Training for Legislative Staff

What Works for Health: A Resource for Policy Research and Constituent Work

July 11, 2017

"Get Facts": Building Local Data into Legislative Work

December 14, 2017

Publications, Reports and Seminars

Austin S. How are Local Groups Sharing What They Know in the Fox Valley? UW Population Health Institute. October 17, 2017.

Finch AJ, Tanner-Smith E, Hennessy E, Moberg DP. Recovery high schools: Effect of schools supporting recovery from substance use disorders. *Am J Drug Alcohol Abuse*. 2018;44(2):175-184.

Friedsam D. The ACA in Wisconsin: What's Next for Premiums, Insurance Markets, and Consumers. UW Population Health Institute. August 18, 2017.

Friedsam D. Health Care Quality & Disparities: Signs of Improvement. UW Population Health Institute. August 31, 2017.

Friedsam D. New Census Data: Uninsured Rates in Wisconsin. UW Population Health Institute. September 13, 2017.

Givens, M., Gennuso, K., Jovaag, A., & Willems Van Dijk, J. County Health Rankings 2017 Key Findings Report. March, 2017.

Glurich I, Schwei KM, Lindberg S, Shimpi N, Acharya A. Integrating medical-dental care for diabetic patients: qualitative assessment of provider perspectives. *Health Promotion Practice*, 2017 Oct 26.

Maslowsky J, Whelan Capell J, Moberg DP, Brown RL. Universal school-based implementation of screening brief intervention and referral to treatment to reduce and prevent alcohol, marijuana, tobacco, and other drug use: process and feasibility. *Subst Abuse*. 2017 Dec. 19;11.

Paltzer J, Brown RL, Burns M, Moberg DP, Mulahy J, Sethi AK, Weimer D. Substance use screening, brief intervention, and referral to treatment among medicaid patients in Wisconsin: impacts on healthcare utilization and costs. *J Behav Health Serv Res*. 2017 Jan;44(1):102-112.

Stein, E, Gennuso, K, Ugboaja D, & Remington P. The Epidemic of Despair Among White Americans: Trends in the Leading Causes of Premature Death, 1999-2015. *Am J Public Health*, 107(10), 1541-7. 2017.

Institute-Sponsored Seminars

Health in All Policies: Creating healthier, more vibrant and equitable communities, Plan4Health Roundtable Seminar

June, 2017

Sponsors: UW Population Health Institute
MATCH Group, American Planning Association-WI Chapter, East Central Regional Planning Commission, healthTIDE, Eau Claire City-County Health Department.

Making Wisconsin the Healthiest State Agenda Setting Convening

October, 2017

Facilitators:

Jeanne Ayers, Assistant Commissioner, Minnesota Department of Health and Jonathan Heller, Executive Director, Human Impact Partners.



Selected Abstracts & Presentations

Repeal and Replace: What Might Calm Insurance Markets and Assure Consumers?

Wisconsin Legislative Briefing, Madison, WI
January 11, 2017

What Will Policymakers Learn from Evaluations of State 1115 Medicaid Waiver Demonstrations?

Academy Health National Health Policy Conference, Panel Chair and Presenter
January 30, 2017

Evaluating the Health of Wisconsin

Lindberg SM. Invited presentation to the Green Tier Legacy Communities Quarterly Meeting, Wisconsin Rapids, WI,
January 2017

Health Reform: What's Next at the Federal Level and in Wisconsin?

Wisconsin Nurses Association Annual Meeting, Madison, WI
February 28, 2017

Affordable Care Act, Medicaid, and Health Reform: What's Next at the Federal Level and in Wisconsin?

University of Wisconsin School of Medicine & Public Health, Madison, WI
February 2017

Building a Culture of Health: Brownsville, Texas

Carroll, C. Communities Joined in Action
February, 2017

Build Healthy Communities & Partnerships

Iheukumere, A., & O'Neill, J. United Way Worldwide Great Rivers Conference
February, 2017

Evaluation of a Multi-level Initiative to Improve Healthy Birth Outcomes Among African American Women in Wisconsin

Godecker, A., Corbett, A.M., Smulian, E., McWilliams, C.A., & Ehrenthal, D. Poster presentation at the Association of Maternal and Child Health Programs 2017 Annual Conference, Kansas City, MO.
March 4-7, 2017

Health Reform: What's Next at the Federal Level and in Wisconsin?

Wisconsin Association of Family and Children's Agencies, Madison, WI
March 10, 2017

Evaluation of Wisconsin-based Opioid Prevention and Treatment Efforts

Lindberg, S. Invited presentation to the Wisconsin state legislature, Evidence Based Policy Program, Research Roundtable on Opioid Addiction. Madison, WI
March 2017

Interdisciplinary Diabetes Management: Qualitative Assessment of Medical/Dental Practitioners' Perspectives

Glurich I, Schwei K, Lindberg S, Shimpi N, Schroeder D, Acharya A. Poster presented at the annual meeting of the International Association for Dental Research, San Francisco, CA
March 2017

Systems Mapping for PSE Change

Faust, V & Inzeo, P. T. Medical College of Wisconsin: PSE Change Symposium, Madison, WI.
April 27, 2017

Building a Culture of Health: County Health Rankings & Roadmaps

Odegaard, K. Kentucky Public Health Association
April, 2017

Health Reform: What's Next at the Federal Level and in Wisconsin?

Wisconsin Association of Government Accountants. Madison, WI,
May 10, 2017

Health Reform: What's Next at the Federal Level and in Wisconsin?

Wisconsin Legislature, Democratic Study Committee, Madison, WI,
May 15, 2017

UW Health Culturally Congruent and Diversity Resource Workshop

Faust, V., Hatchell, K., & Bergum, A. UW Health Cultural Congruence Workgroup. Madison, WI.
May 16, 2017

Selected Abstracts & Presentations (cont'd)

Building and Unleashing Community Power
Co-sponsored by RWJF funded Global Policy Solutions Allies for Reaching Community Health Equity Initiative
Inzeo, PT & Faust, V
May 2017

Centering Equity in Health in All Policies
Inzeo, P. T. National Network of Public Health Institutes Annual Conference, New Orleans, LA.
May 2017

Findings From the Wisconsin Medical and Dental Provider Focus Group Discussion
Lindberg, S. Invited presentation to 2017 Oral-Systemic Health Conference. Wisconsin Dells, WI
May 2017

Making Wisconsin the Healthiest State: Report Card and Wisconsin Trends in Mortality Rates and Causes of Death: 1999-2001
Hatchell, K., Gennuso, K., Inzeo, P.T., & Handrick, L. Wisconsin Public Health Association, Wisconsin Dells, WI.
May 2017

Health Reform: What's Next at the Federal Level and in Wisconsin?
SSM Health-Dean Health Plan, Madison, WI,
June 15, 2017

Mass Incarceration, Power, and Determinants of Health
Faust, V. Society for Community Research and Action Biennial Conference. Ottawa, Ontario Canada.
June 23, 2017

County Health Rankings & Roadmaps: An Introduction to Resources
Rivas, J. Healthcare Foundation of LaPorte, IN
June, 2017

Digging into Rural Health
Van Dijk, J. W. Association for Healthcare Journalists
June, 2017

Essential Tools for Health Equity Practice, National Audience
Co-sponsored by RWJF funded Global Policy Solutions Allies for Reaching Community Health Equity Initiative
June 2017

Improving Population Health Using a Healthy Equity Lens
Inzeo, P.T. & Faust, V.
Ascension Health Care System
June 2017

Initial Results From a Statewide Multi-Level Initiative to Prevent Childhood Obesity International Society for Behavioral Nutrition and Physical Activity
Lindberg S., Meinen A., Korth A., Christens B., Cryns V., Adams AK. Victoria, BC, Canada
June 2017

Injuries Key Factor in Premature Deaths
Jovaag, A. Council for State and Territorial Epidemiologists
June, 2017

Promising Tools to Support Dissemination and Implementation of Evidence-Based Health Promotion Strategies International Society for Behavioral Nutrition and Physical Activity
Lindberg S., Meinen A., Korth A., Christens B., Cryns V., Adams AK. Victoria, BC, Canada
June 2017

Health Reform for Wisconsin: What Works, What's Fair, Who Pays?
Madison Lions Club. Madison, WI
July 12, 2017

What's Next for Health Reform
Panelist during plenary session of Wisconsin Health News Conference, Madison
July 19, 2017

Healthy Workforce, Healthy Communities
Jerome, K. Association of Chamber of Commerce Executives
July, 2017

What Works for Health: Evidence at Your Fingertips
Wisconsin State Legislative Training Sessions on WWFH in Collaboration with the Evidence-Based Health Policy Project (EBHPP)
July, 2017

What Works for Health
Konkle, K. Oklahoma Turning Point,
August, 2017

Selected Abstracts & Presentations (cont'd)

- Wisconsin Health Insurance Enrollment: Where We've Been, Where We Are, & Where We Might Go Next**
Opening Plenary Session Speaker. Wisconsin Enrollment Conference, Wisconsin Dells, October 10, 2017
- Wisconsin Health Insurance Enrollment: Where We've Been, Where We Are, & Where We Might Go Next**
Wisconsin Income Maintenance Consortium. Madison
October 19, 2017
- What's Next for Health Reform**
Keynote speaker for Wisconsin Nurses Association Annual meeting, Green Bay
October 21, 2017
- Health Reform: What Happened? What's Happening? What's Next?**
PLATO Seminar. Madison Senior Center
October 21, 2017
November 28, 2017
- What Consumers in Illinois, Michigan, and Wisconsin Need to Know about Open Enrollment**
Wisconsin Speaker. Kaiser Family Foundation Webinar
October 26, 2017
- County Health Rankings & Roadmaps: Wisconsin Profile**
Kingery, K. United Health Care
October, 2017
- From Despair to Hope: Prophetic Leadership in Turbulent Times**
Chrislip, D., Steffensmeier, T., Inzeo, P.T., Graeve, C., & Temple, K. International Leadership Association 19th Annual Global Conference, Leadership in Turbulent Times, Brussels, Belgium.
October 2017
- How Public Health Efforts for Justice Reform Can Support Empowerment of Formerly Incarcerated People**
Dillard, J., Faust, V., Givens, M., Rice, M., Satinsky, S., & Harris, L. American Public Health Association Annual Meeting. Atlanta, GA.
November 7, 2017
- Health Equity in Population Health**
Faust, V. Transcultural Nursing Society Wisconsin Chapter. Madison, WI.
November 9, 2017
- Operationalizing Equity Through Organizational Policy and Practice**
Faust, V. and Wolf, L. Maternal and Child Health Summit. Wisconsin Dells, WI.
November 14, 2017
- County Health Rankings & Roadmaps: Igniting Action in Rural Communities**
Bennett, M. Kentucky Rural Health Association
November, 2017
- Disparity Ratings: Guidance on What Works to Improve Health Equity**
Bergum, A., Hirsch, B., & Givens, M. American Public Health Association
November, 2017
- Evidence at your Fingertips: What Works for Health**
Bergum, A., & Rubenstein, J. Midwest Forum on Hospitals, Health Systems, and Population Health
November, 2017
- Strategic Prevention Framework Partnerships For Success II Overview of Evaluation Findings**
Linnan, S. Presentation to the State Council on Alcohol and Other Drugs (SCAODA) Prevention Committee
2017
- Survey on Perceptions, Awareness and Use of Substances in Wisconsin; Preliminary Results**
Linnan, S. Presentation to the Alliance for Wisconsin Youth Regional Prevention Center Steering Committee
2017
- Evidence at Your Fingertips: Tools and Tips to Harness Evidence-Based Interventions**
Midwest Forum on Hospitals, Health Systems, and Population Health: WWFH workshop with Centers for Disease Control and Prevention's HI-5 and 6/18 initiatives
2017

Media Feature Interviews

Republicans Unveil Their Replacement to the Affordable Care Act

*Wisconsin Public Radio
March 7, 2017*

First Look: UW Healthcare Expert on Obamacare Replacement

*Wisconsin Public Television
March 10, 2017*

New GOP Health Care Bill Could Crumble Over Pre-Existing Conditions

*Wisconsin Public Radio
May 2, 2017*

Congressional Budget Office Releases Score of the American Health Care Act

*Wisconsin Public Radio
May 25, 2017*

UW-Madison Healthcare Experts Say How Senate Health Bill Could Affect People in Wisconsin

*WKOW-TV
June 22, 2017*

Senate Unveils Their Health Care Plan

*Wisconsin Public Radio
June 22, 2017*

Health Care Expert on How Senate Bill May Impact Wisconsin

*Wisconsin Public Television
June 23, 2017*

GOP Senators Unveil Revised Health Care Bill Aimed At Replacing Obamacare

*Wisconsin Public Radio
July 13, 2017*

Funding Cuts for Obamacare Navigators Discussed on Capital City Sunday

*WKOW-TV
September 24, 2017*

White House Takes Action Against Affordable Care Act

*Wisconsin Public Radio
October 13, 2017*

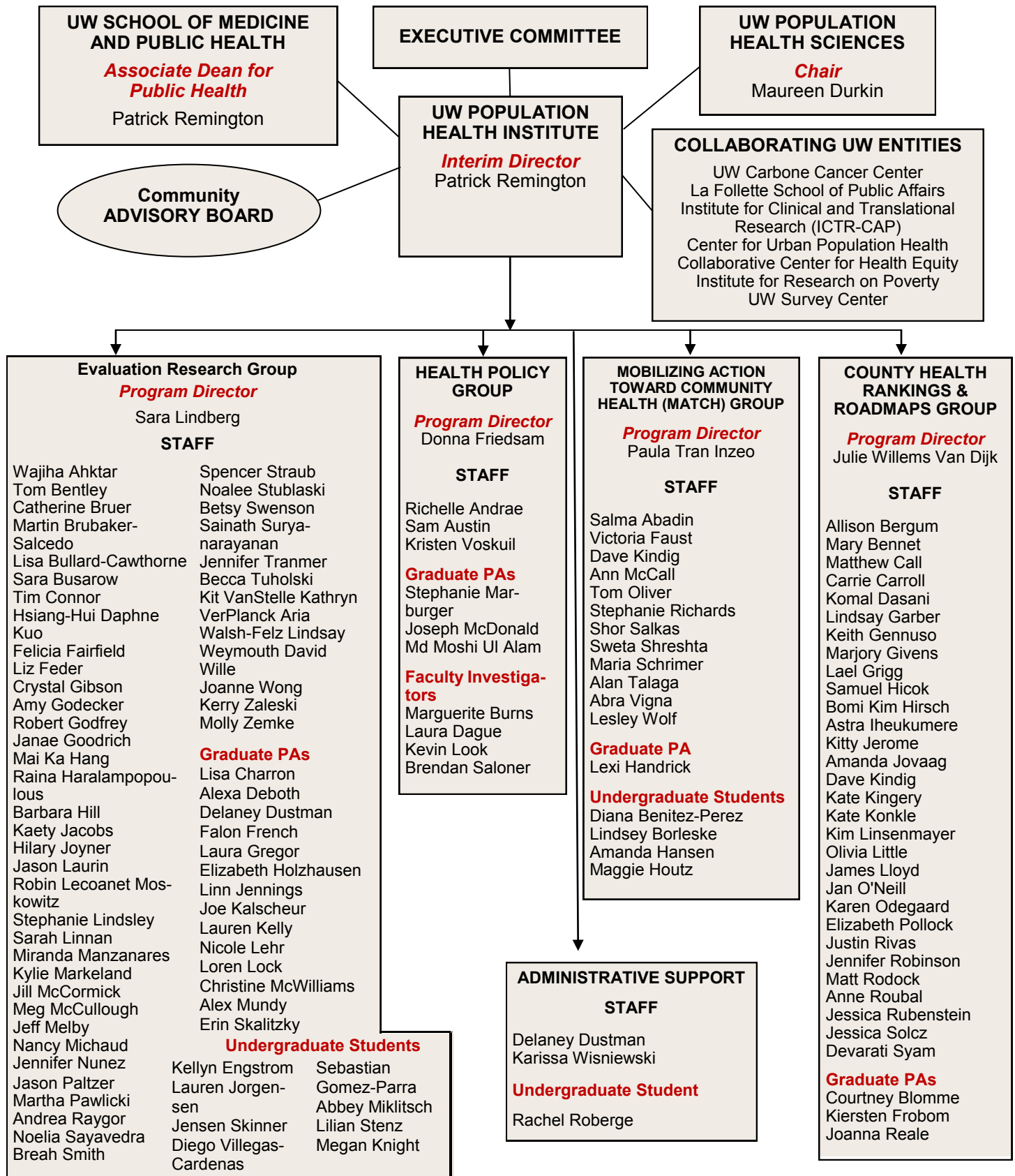
U.S. Senate Looks to Repeal Individual Mandate

*Wisconsin Public Television
November 17, 2017.*



Photos by Jeff Miller/UW-Madison

University of Wisconsin School of Medicine and Public Health UW Population Health Institute



Institute Staff in 2017

Salma Abadin, HWLI Community Teams Program Lead
Wajiha Ahktar, Associate Researcher
Richelle Andrae, Assistant Researcher
Karina Atwell, Professor, Clinical Instructor
Sam Austin, Health Policy Analyst
Mary Bennet, Associate Researcher
Tom Bentley, Assistant Researcher
Alison Bergum, Associate Researcher
Catherine Breuer, Assistant Researcher
Martín Brubaker-Salcedo, Associate Research Specialist
Lisa Bullard-Cawthorne, PDO Program Coordinator
Marguerite Burns, Associate Professor, Faculty Investigator
Sara Busarow, Associate Researcher
Matthew Call, Administrative Program Specialist
Carrie Carroll, Researcher
Tim Connor, Researcher
Aaron Crandall, Grants Manager
Laura Dague, Faculty Investigator
Hsiang-Hui Daphne Kuo, Assistant Scientist
Komal Dasani, University Services Associate II
Felicia Fairfield, Outreach Specialist
Victoria Faust, Action Researcher and Evaluator
Liz Feder, Associate Researcher
Donna Friedsam, Health Policy Programs Director
 Lindsay Garber, Communications Associate
Keith Gennuso, Assistant Scientist
Crystal Gibson, Epidemiologist
Marjory Givens, Associate Scientist
Amy Godecker, Associate Scientist
Robert Godfrey, Senior Research Specialist
Janae Goodrich, Assistant Researcher
Lael Grigg, Assistant Researcher
Samuel Hicok, University Services Associate II
Barbara Hill, Associate Research Specialist
Bomi Kim Hirsch, Assistant Researcher
Astra Iheukumere, Researcher
Kaety Jacobs, Associate Research Specialist
Kitty Jerome, Researcher
Amanda Jovaag, Associate Researcher
Raina Haralampopoulos, Outreach Specialist
Elizabeth Holzhausen, Assistant Researcher
Hilary Hoyner, Assistant Researcher
Mai Ka Hang, Associate Outreach Specialist
Dave Kindig, Professor Emeritus
Kate Kingery, Researcher
Kate Konkle, Associate Researcher
Jason Laurin, Outreach Specialist
Robin Lecoanet Moskowitz, Researcher
Nicole Lehr, Project Assistant
Sara Lindberg, Evaluation Program Director
Sarah Linnan, Assistant Researcher
Stephanie Lindsley, Assistant Researcher
Kim Linsenmayer, Research Program Manager III
Olivia Little, Associate Researcher
James Lloyd, Information Processing Consultant
Kevin Look, Assistant Professor, Faculty Investigator
Miranda Manzanares, Associate Research Specialist
Kylie Markeland, Research Specialist
Ann McCall, Outreach Specialist
Jill McCormick, Senior Outreach Specialist
Meg McCullough, Outreach Specialist

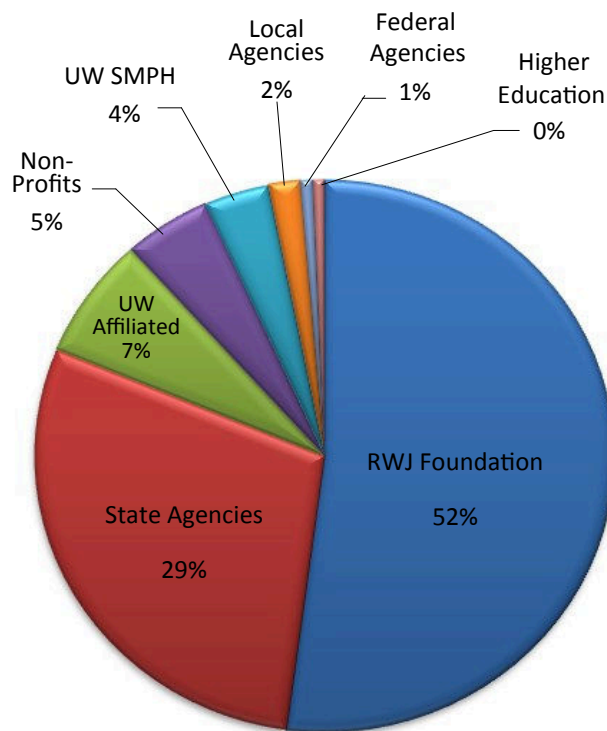
Jeff Melby, Outreach Specialist
Nancy Michaud, Senior Outreach Specialist
Paul Moberg, Research Professor, Faculty Advisor, & Senior Scientist
Jennifer Nuñez, Associate Researcher
Jan O'Neill, Associate Researcher
Karen Odegaard, Associate Researcher
Tom Oliver, PI: Fellowship Program
Jason Paltzer, Assistant Scientist
Martha Pawlicki, University SVC Program Associate
Elizabeth Pollock, Assistant Researcher
Andrea Raygor, Assistant Researcher
Stephanie Richards, Associate Outreach Specialist
Justin Rivas, Associate Researcher
Jennifer Robinson, Senior Programmer Analyst
Matt Rodock, Associate Researcher
Anne Roubal, Associate Researcher
Jessica Rubenstein, Assistant Researcher
Shor Salkas, HWLI Community Coach
Brendan Saloner, Faculty Investigator
Noelia Sayavedra, Assistant Researcher
Maria Schirmer, HWLI Community Coach
Sweta Shrestha, Outreach Specialist
Erin Skalitzky, Graduate PA
Breah Smith, Assistant Researcher
Jessical Solcz, Assistant Researcher
Spencer Straub, Senior Outreach Specialist
Noalee Stublacki, Outreach Specialist
Sainath Suryanarayanan, Assistant Scientist
Geof Swain, Fellowship Program Community Faculty
Betsy Swenson, Outreach Specialist
Devarati Syam, Researcher
Alan Talaga, HWLI Interim COACH Program Lead
Paula Tran Inzeo, MATCH Group Director
Jennifer Tranmer, Communications Specialist
Becca Tuholski, Associate Research Specialist
Kit VanStelle, Distinguished Researcher
Jim Vergeront, Fellowship Program Community Faculty
Kathryn VerPlanck, Associate Research Specialist
Abra Vigna, Associate Researcher
Kristen Voskuil, Associate Researcher
Aria Walsh-Felz, Associate Research Specialist
Lindsay Weymouth, Assistant Researcher
David Wille, Associate Researcher
Julie Willems Van Dijk, *County Health Rankings & Roadmaps* Program Director
Karissa Wisniewski, Research Manager
Lesley Wolf, HWLI Outreach Program Manager
Joanne Wong, Associate Outreach Specialist
Kerry Zaleski, Outreach Specialist
Molly Zemke, Student Services Coordinator, Outreach Specialist

Institute Graduate Students in 2017

Courtney Blomme	Lauren Kelly
Lisa Charron	Loren Lock
Alexa Deboth	Stephanie Marburger
Delaney Dustman	Joseph McDonald
French Falon	Christine McWilliams
Kiersten Frobom	Md Moshi UI Alam
Laura Gregor	Alex Mundy
Lexi Handrick	Joanna Reale
Linn Jennings	

Budget

The Institute’s total budget for 2017 was approximately \$11.3 million. This funding comes from a diverse mix of sources, including the Robert Wood Johnson Foundation, the Wisconsin Partnership Program, Wisconsin state agencies, local and tribal agencies, federal agencies, UW School of Medicine and Public Health, and several foundation and other non-profit sources. Federal funds flow to the Institute via several of these resources. The following graph summarizes each funding source as a percent of the Institute’s total budget. Representative projects in each category are listed, following the graph:



National, State, Tribal & Community Organizations

Great Lakes Inter-Tribal Council, Inc.

- Family Foundations Home Visiting Program
- Healthy Start
- Tribal Personal Responsibility Education Program

Lac Du Flambeau Tribe

- Zaagiibagaa Project
- Native Connections

Southwestern Wisconsin Community Action Program

- Improving Behavioral Health Evaluation

Marshfield Clinic Research Foundation

- National Children’s Center Evaluation

Wisconsin Council on Medical Education and Workforce

- Medical Education and Workforce Facilitation

Local Agencies

Adams-Friendship School District

- Advancing Wellness and Resilience in Education
- Breaking Down Student Barriers

Ashland County Health & Human Services

- Advancing Wellness and Resilience in Education
- Ashland County Drug Treatment Court

Dane County

- Treatment and Diversion Program

School District of Beloit

- Safe Schools/Healthy Students

State Agencies

WI Department of Justice

- Reporting, Analysis, and Mining Project Evaluation

WI Department of Health Services

- BadgerCare Waiver Evaluation
- Fit Families – Supplemental Nutrition Assistance Program Education
- Chronic Disease Integration and Coordinated Prevention and Health Promotion
- Mental Health Program Evaluation
- Substance Abuse Prevention
- Project Youth Extension Service
- Partnership for Success
- Tobacco Prevention and Control Program
- Adolescent Health Evaluation
- Medication Assisted Treatment Prescription Drug and Opioid Addiction
- Prescription Drug Overdose Program
- Operating While Intoxicated Study
- Building Resilience Against Climate Effects
- Injury and Violence Prevention
- Office of Health Informatics Opioid Program
- Oral Health Program
- Strategic Prevention Framework for Prescription Drugs
- Prescription Drug/Opioid Overdose-Related Deaths Prevention Project

Budget (cont'd)

Federal Agencies

Department of Veterans Affairs

- Co-Designing Clinical Decision Support to Advance Value Based Shoulder Imaging Evaluation

National Institutes of Health

- Medicaid Screening, Brief Intervention, and Referral to Treatment

Higher Education

Vanderbilt University

- Recovery Schools as Continuing Care

Robert Wood Johnson Foundation

- County Health Rankings and Roadmaps
- Population Health Mean and Disparity Index
- Roadmaps to Health

UW School of Medicine & Public Health

- UWPHI Core Funding

UW Affiliated – Foundations & Programs UW Partnership Program

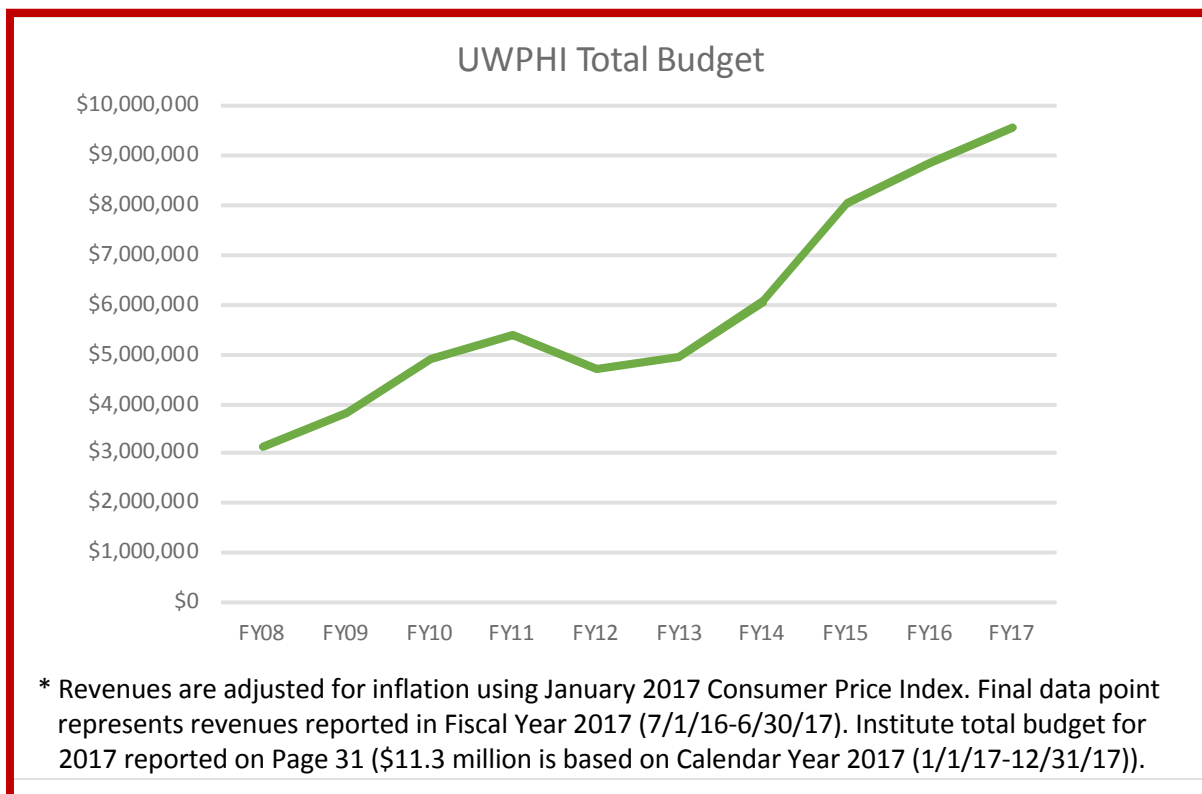
- Evidence-based Health Policy Project
- Healthy Wisconsin Leadership Institute
- Making Wisconsin the Healthiest State
- Wisconsin Population Health Service Fellowship Program
- Southeastern Wisconsin Screening, Brief Intervention, and Referral to Treatment

UW Institute for Clinical Translational Research

- Institute for Clinical Translational Research Program Evaluation

UW Extension

- Wisconsin Healthiest State Summit



Department of Population Health Sciences
University of Wisconsin School of Medicine & Public Health
UW Population Health Institute
575 WARF Building
610 Walnut Street, Madison, WI 53726

 (608) 263-6294

 (608) 262-6404

 UWPHI@med.wisc.edu

 Uwphi.pophealth.wisc.edu

 [@UWiscPHI](https://twitter.com/UWiscPHI)



University of Wisconsin
Population Health Institute
SCHOOL OF MEDICINE AND PUBLIC HEALTH