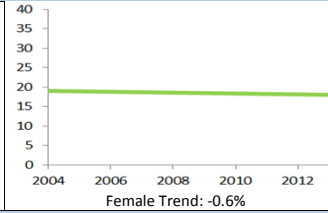
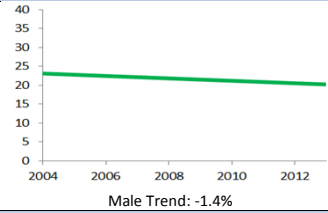


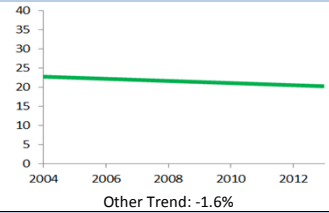
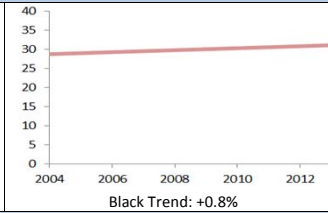
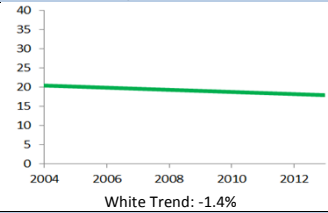
## Smoking Disparity Graphs

Overall Baseline Trend (% change/year): -1.0%

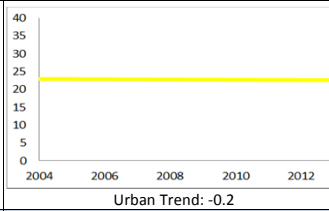
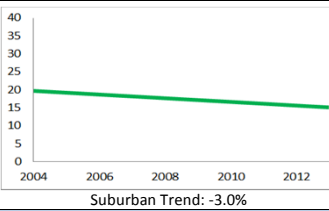
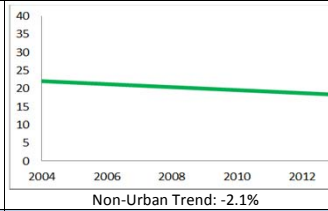
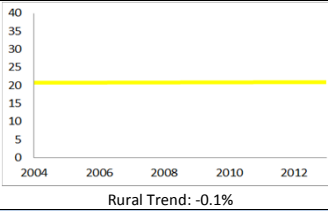
### Gender



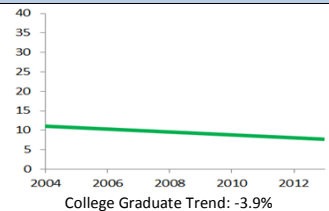
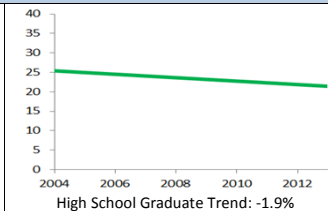
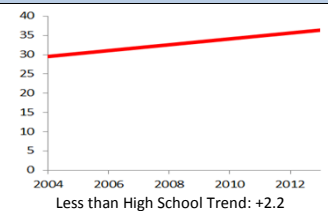
### Race/Ethnicity



### Geography



### Socioeconomic Factors



\*All Trends represent a regression line for the 10 most recent years of data, not actual data points

- A ↓ or ↓ indicates Wisconsin improved on the health indicator during the past 10 years;
- A → indicates Wisconsin's performance on the health indicator has remained stable; and
- A ↑ or ↑ indicates Wisconsin's performance worsened during the past 10 years.

#### Baseline Trend Progress

- ↑ = APC\* > +1.0%/year
- ↑ = +1.0%/year ≥ APC > +0.5%/year
- = +0.5%/year ≥ APC ≥ -0.5%/year
- ↓ = -0.5%/year > APC ≥ -1.0%/year
- ↓ = -1.0%/year > APC

\*APC=Annual Percent Change

\*Due to methodological changes to sampling methods of the Behavioral Risk Factor Surveillance System (BRFSS), 2012 and 2013 data are not directly comparable to previous years. For more information, please read the BRFSS Methodological Documents: <http://www.cdc.gov/surveillancepractice/reports/brfss/brfss.html>