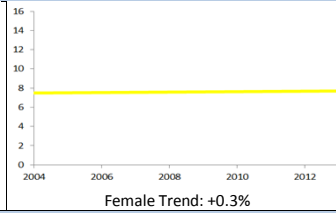
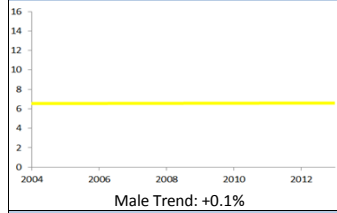


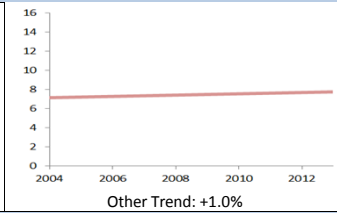
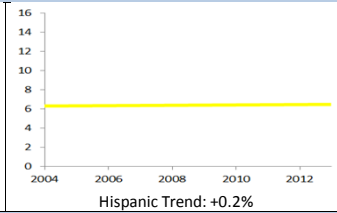
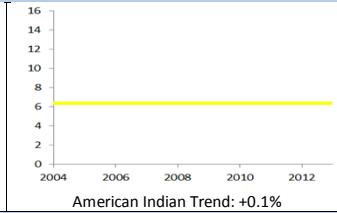
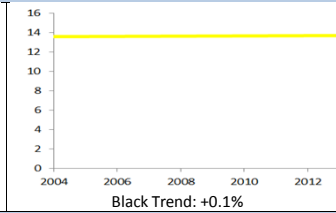
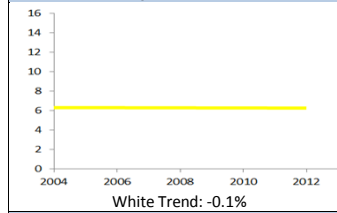
Low Birthweight Disparity Graphs

Overall Baseline Trend (% change/year): +0.5%

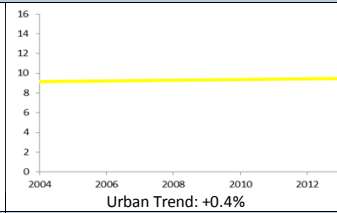
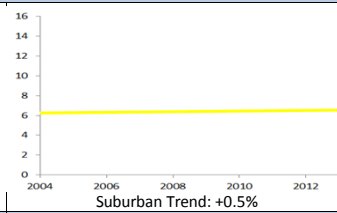
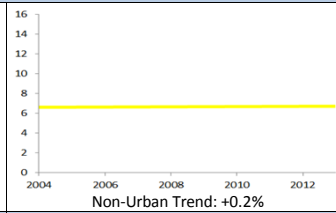
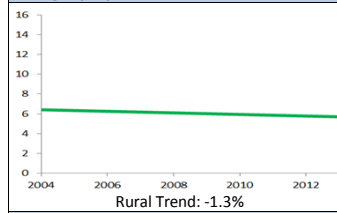
Gender



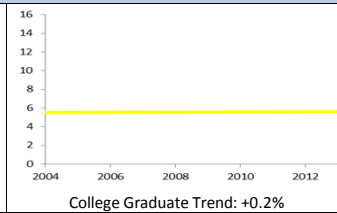
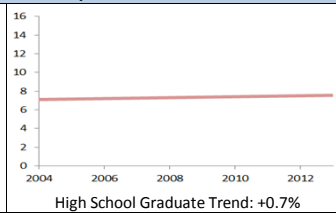
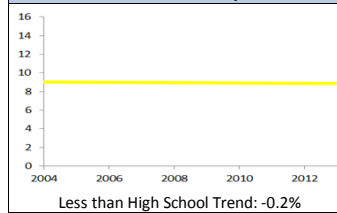
Race/Ethnicity



Geography



Socioeconomic Factors (Mother's Education)



*All Trends represent a regression line for the 10 most recent years of data, not actual data points

- A ↓ or ↓ indicates Wisconsin improved on the health indicator during the past 10 years;
- A → indicates Wisconsin's performance on the health indicator has remained stable; and
- A ↑ or ↑ indicates Wisconsin's performance worsened during the past 10 years.

Baseline Trend Progress

- ↑ = APC* > +1.0%/year
- ↑ = +1.0%/year ≥ APC > +0.5%/year
- = +0.5%/year ≥ APC ≥ -0.5%/year
- ↓ = -0.5%/year > APC ≥ -1.0%/year
- ↓ = -1.0%/year > APC

*APC=Annual Percent Change