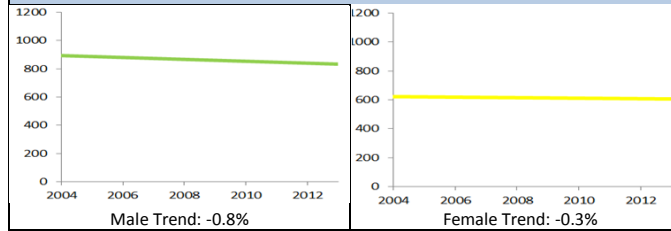


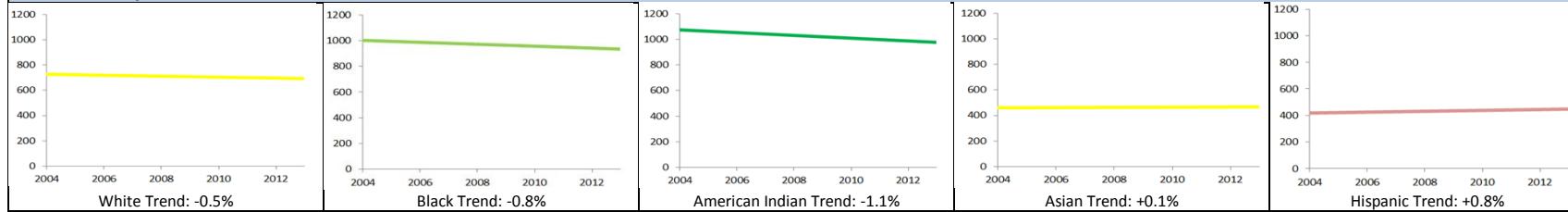
## All Ages Death Rate (per 100,000 population) Disparity Graphs

Overall Baseline Trend (% change/year): -0.8%

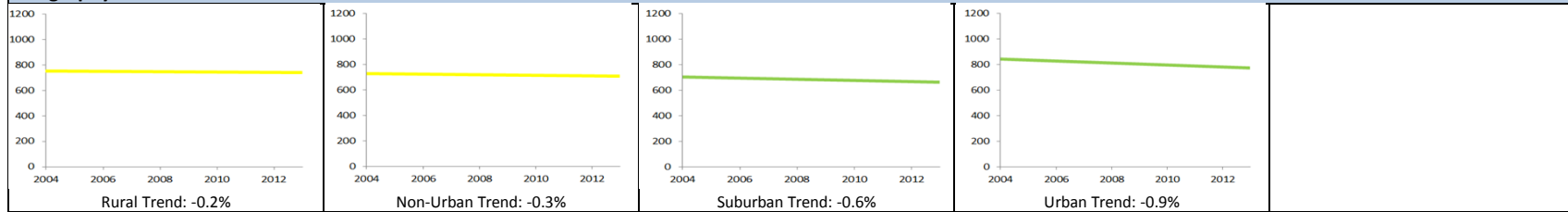
### Gender



### Race/Ethnicity



### Geography



\*All Trends represent a regression line for the 10 most recent years of data, not actual data points

- A ↓ or ↓ indicates Wisconsin improved on the health indicator during the past 10 years;
- A → indicates Wisconsin's performance on the health indicator has remained stable; and
- A ↑ or ↑ indicates Wisconsin's performance worsened during the past 10 years.

#### Baseline Trend Progress

- ↑ = APC\* > +1.0%/year
- ↑ = +1.0%/year ≥ APC > +0.5%/year
- = +0.5%/year ≥ APC ≥ -0.5%/year
- ↓ = -0.5%/year > APC ≥ -1.0%/year
- ↓ = -1.0%/year > APC

\*APC=Annual Percent Change