

Public Health And Surveillance Breakout Session

Bevan Baker


City of Milwaukee

Health Commissioner

eHealth Summit

March 15, 2007

Agenda

- Public Health Work to Date
 - WI Action Plan – What's In It For Public Health
 - Next Steps / Implementation
- 

eHealth Public Health Work – Nationally

<http://www.hhs.gov/healthit/ahic/population/>



U.S. Department of Health & Human Services

www.hhs.gov



Health Information Technology



[HIT Home](#)

[American Health
Information Community](#)

[AHIC Workgroups](#)

[Chronic Care](#)

[Confidentiality,
Privacy & Security](#)

[Consumer
Empowerment](#)

[Electronic
Health Records](#)

[Personalized
Healthcare](#)

[Population
Health](#)

[Quality](#)

[How To Participate](#) | [Materials & Resources](#) | [Archives](#) | [Contact](#)

Population Health and Clinical Care Connections Workgroup

WI eHealth Action Plan

Technology platform.

Information Technology (HIT)

Regional information exchange (HIE)

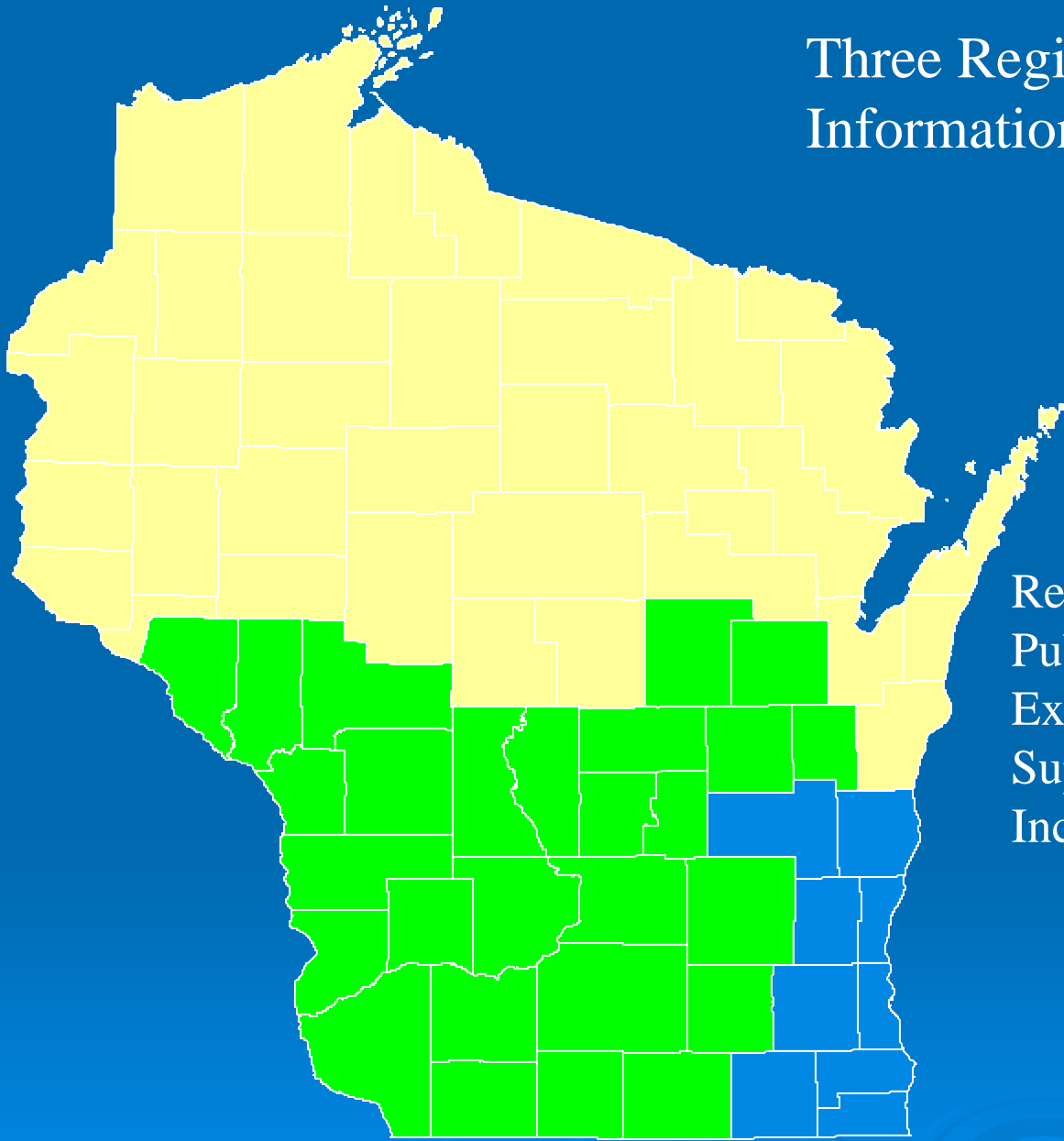
Statewide HIE services.

Value purchasing policies and actions.

Link to Prevention & Disease Mgt

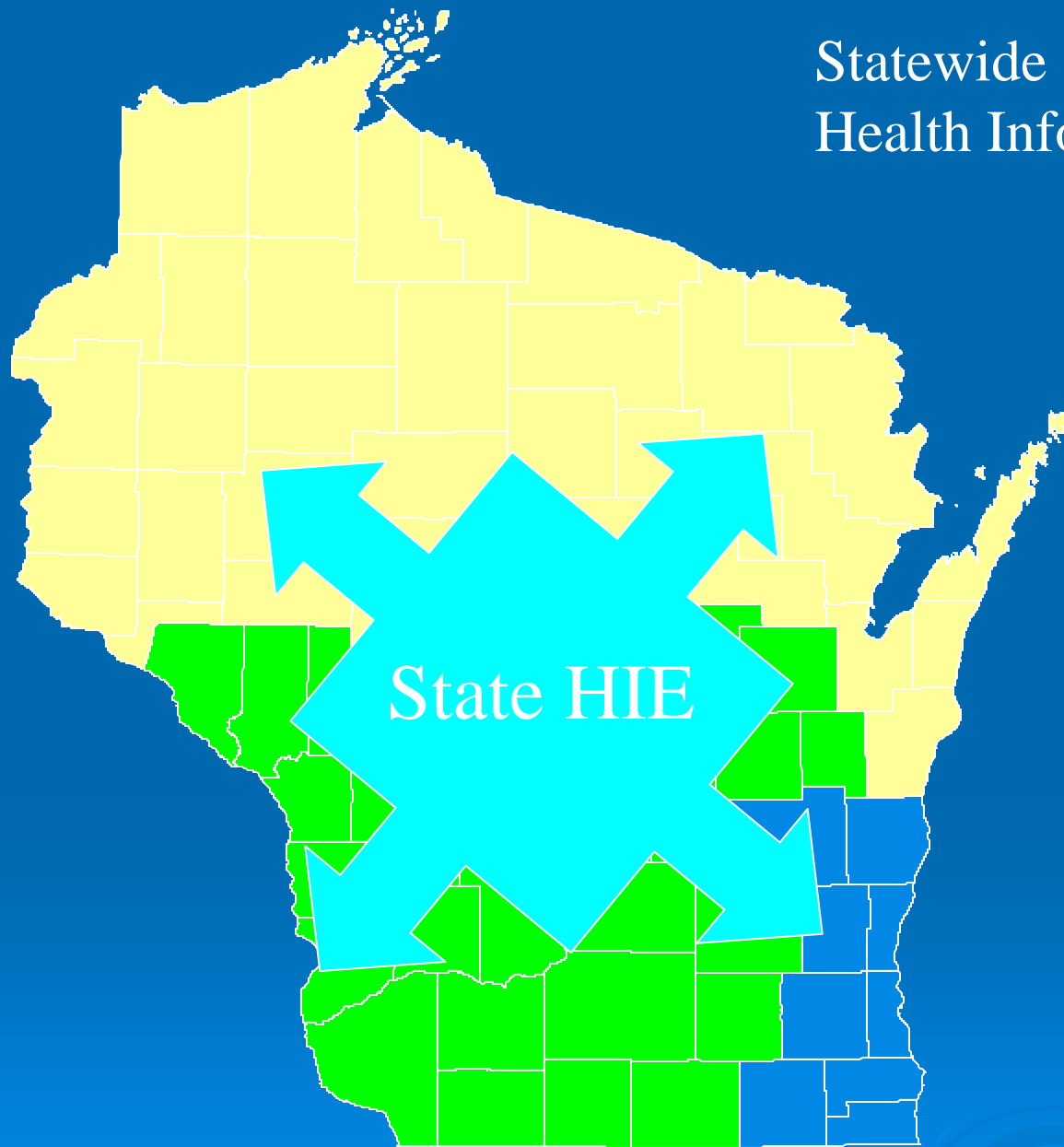
Incremental approach

Three Regional Health Information Exchanges



Regional Exchanges:
Public Private Governance
Exchange Health Data to
Support Treatment
Include Public Health

Statewide Health Information Exchange

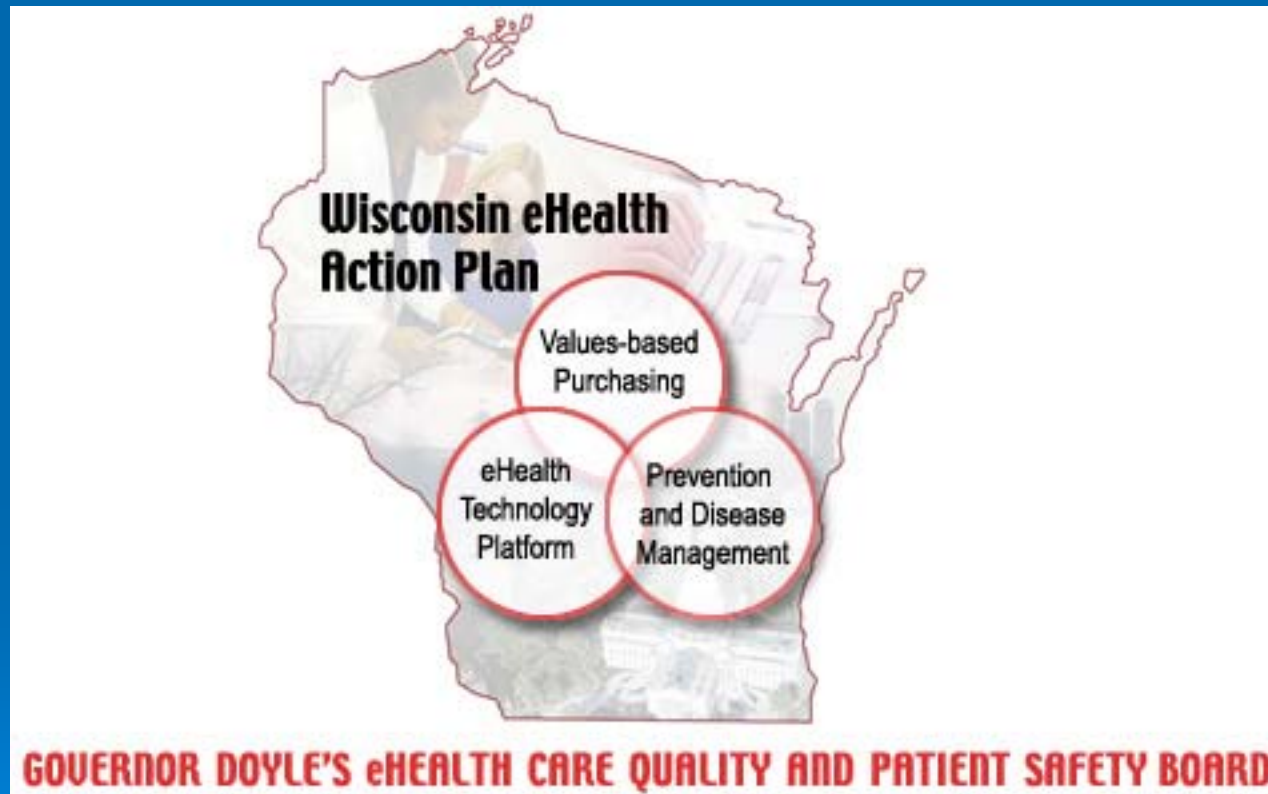


Services:

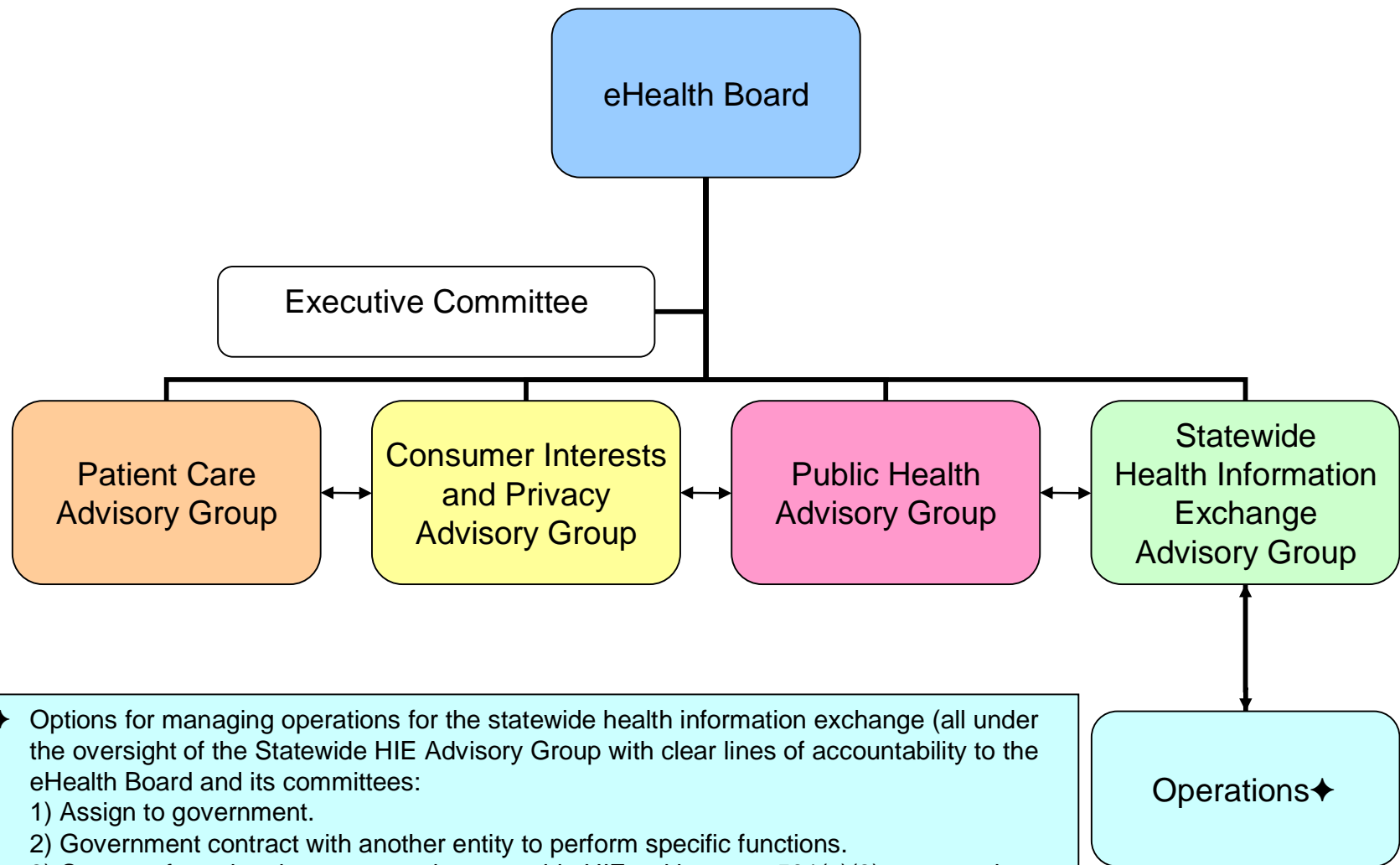
- ✓ Authentication
- ✓ Role Based Access
- ✓ Master Patient Index
- ✓ Gateway Exchange
- ✓ Population Health
Medical Informatics
Analysis & Visualization
- ✓ Business Intelligence

Wisconsin's eHealth Action Plan

What's In It For Public Health



WI eHealth Action for Public Health Governance Proposal



- ◆ Options for managing operations for the statewide health information exchange (all under the oversight of the Statewide HIE Advisory Group with clear lines of accountability to the eHealth Board and its committees:
 - 1) Assign to government.
 - 2) Government contract with another entity to perform specific functions.
 - 3) Create a formal entity to govern the statewide HIE - either as a 501(c)(3) or a quasi-public entity/authority.

Public Health Advisory Group

- Establish biosurveillance
- Provide medical informatics – population health expertise to eHealth Board
- Assure interoperability of HIE/HIT with Wisconsin's Public Health Information Network (PHIN).
- Use of patient care data for appropriate public health practice
- Link the medical and public health information to innovate system improvements

Next Implementation Steps Your Input



Public Health Context to eHealth

Next Implementation Steps for:

- State Public Health?
 - Local Public Health?
 - Regional Health Information Organizations?
 - Health Care Providers?
 - Non Governmental Organizations?
- 

Public Health Context to eHealth Next Implementation Steps for:

- What are the Public Health Issues to Inform the other Advisory Groups of
 - Patient Care?
 - Consumer Interests & Privacy?
 - Statewide Health Information Exchange / Operations?

Public Health Context to eHealth Should the Vision Be:

- **A Transformed Public Health System where all Public Health Practices are Supported by eHealth**

Public Health Context to eHealth

Should the Mission Be:

- **An engaged public health system will specify the eHealth requirements to support the state health plan**
- **It will implement WI State Health Plan System Priority # 1 – Integrated Electronic Data and Information Systems?**

Thank You!

