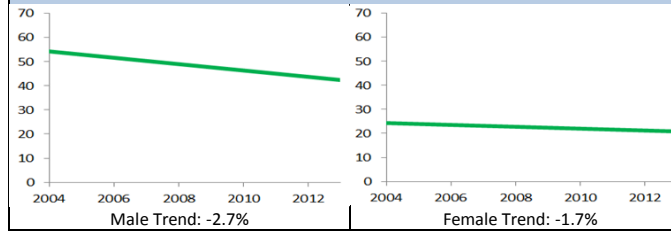


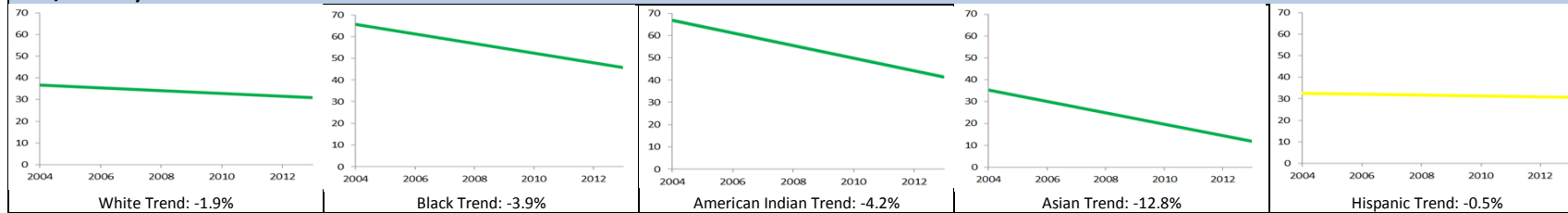
1-24 Year Old Death Rate (per 100,000 population) Disparity Graphs

Overall Baseline Trend (% change/year): -2.8%

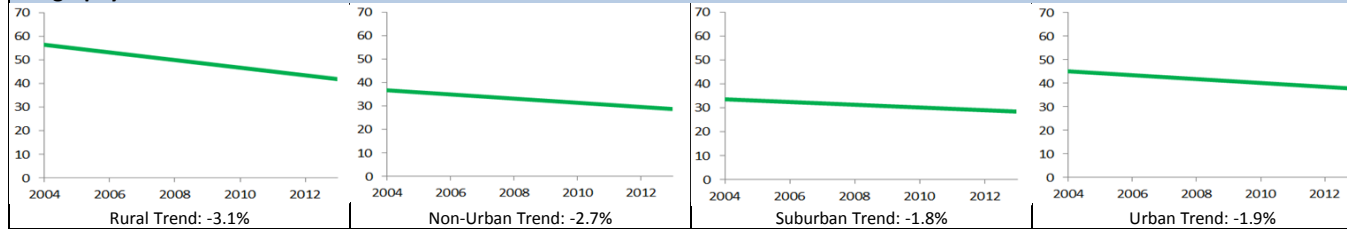
Gender



Race/Ethnicity



Geography



*All Trends represent a regression line for the 10 most recent years of data, not actual data points

- A ↓ or ↓ indicates Wisconsin improved on the health indicator during the past 10 years;
- A → indicates Wisconsin's performance on the health indicator has remained stable; and
- A ↑ or ↑ indicates Wisconsin's performance worsened during the past 10 years.

Baseline Trend Progress

- ↑ = $APC > +1.0\%/year$
- ↑ = $+1.0\%/year \geq APC > +0.5\%/year$
- = $+0.5\%/year \geq APC \geq -0.5\%/year$
- ↓ = $-0.5\%/year > APC \geq -1.0\%/year$
- ↓ = $-1.0\%/year > APC$

*APC=Annual Percent Change